

Flexible, fast and professional!

Extract of the stocklist:



SQUARE MESHES, plain weave or *twill weave									
Aperture in mm	Wire diameter in mm	Mesh per inch 1 inch = 25,4mm	Open Area in %	Weight		Aperture in mm	Wire diameter in mm	Mesh per inch 1 inch = 25,4mm	Open Area in %
w	d	mesh	FO	kg/m ²		w	d	mesh	FO
10,00	2,00	2,0	68	4,23		0,87	0,40	20	48
10,00	1,50	2,2	75	2,80		0,80	0,50	20	38
8,00	1,60	2,5	69	3,39		0,72	0,35	24	44
6,30	1,00	3,5	74	1,74		0,63	0,40	25	37
5,00	1,00	4,25	68	2,12		0,50	0,32	30	37
4,00	1,00	5,0	62	2,54		0,50	0,10	36	51
3,00	1,20	6,0	50	4,40		0,40	0,22	40	42
3,15	0,80	6,5	64	2,05		0,40	0,25	40	38
2,50	1,00	7,25	51	3,65		0,315	0,20	50	37
2,00	1,00	8,5	41	4,10		0,25	0,16	60	37
2,00	0,50	10,0	64	1,25		0,20	0,125	80	38
1,64	0,90	10,0	42	4,00		0,16	0,10	100	38
1,60	0,50	12,0	58	1,51		0,14	0,112	100	31
1,60	1,00	10,0	38	4,88		0,125	0,080	120	37
1,25	0,40	16,0	57	1,23		0,10	0,063	150	38
1,25	0,80	12,0	37	3,92		0,075	0,053	200	36
1,00	0,30	20,0	57	0,99		0,063	0,04	250	37
1,00	0,40	18,0	51	1,45		0,042	0,036*	325	29
1,00	0,50	17,0	44	2,12		0,036	0,028*	400	32
						0,025	0,025*	500	25

PLAIN DUTCH WEAVE or *twilled weave		
Micronic rating nominal	Mesh per inch 1 inch = 25,4mm	Weight
my	mesh	kg/m ²
300	12 x 64	4,10
260	14 x 88	3,15
150	24 x 110	2,70
100	30 x 150	1,60
80	40 x 200	1,30
50	50 x 250	1,00
25	80 x 700*	1,20
32	120 x 400*	0,75
20	165 x 800*	0,71
15	165 x 1400*	0,70
25	200 x 600*	0,50
10	200 x 1400*	0,68
5	325 x 2300*	0,47

REVERSED PLAIN DUTCH (PZ)		
Micronic rating nominal	Mesh per inch 1 inch = 25,4mm	Weight
my	mesh	kg/m ²
17	625/130	0,85
25	625/102	0,80
40	290/72	1,55
60	175/50	2,40
80	132/36	3,10
150	86/24	

REVERSED TWILLED DUTCH (KPZ)		
Micronic rating nominal	Mesh per inch 1 inch = 25,4mm	Weight
micron ca.	mesh	kg/m ²
55	325/39	2,7
80	260/40	1,9
150	152/24	4,7
300	132/17	3,9
500	72/15	5,5

Other designs on request.

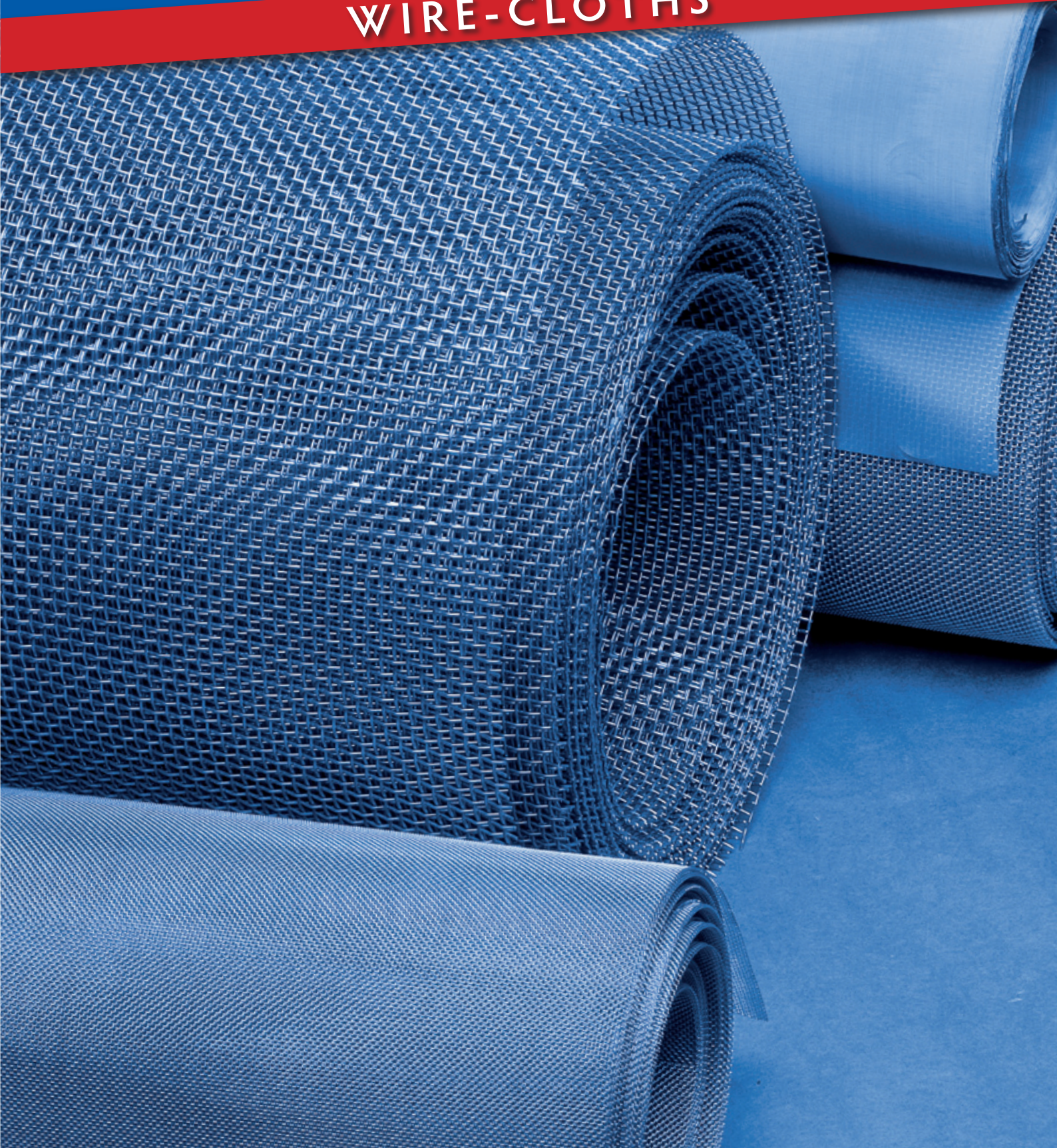
Rolf Körner GmbH

Neue Straße 14-16 · D-52382 Niederzier
Gewerbegebiet Huchem-Stammeln
Tel +49 (0) 24 28-94 19-0 · Fax +49 (0) 24 28-59 80
www.rolfkoerner.de · info@rolfkoerner.de

Plastics
Paper
Hydraulics
Chemistry
Water
Gas
Energy
Plastic melt



WIRE-CLOTHS



WIRE CLOTHS



We have a well-sorted warehouse at our disposal, enabling us to respond to requests at short notice in the quickest and best possible way.

This allows us to deal with your requests promptly and to your full satisfaction.

Materials: Stainless steel, plain steel, galvanised steel, copper, brass, phosphor bronze, special alloys

Weaves: Plain weave, twilled weave, plain Dutch weave, Dutch twilled weave, reversed plain Dutch weave, reversed twilled Dutch weave

Filtration grade: From 3 µm up to 10 mm

Measurements: Standard widths 1000 mm, 1220 mm and 1300 mm
Up to 6000 mm upon request

Roll lengths: 30,5 m, 100 m, 150 m or on request

Other designs on request.

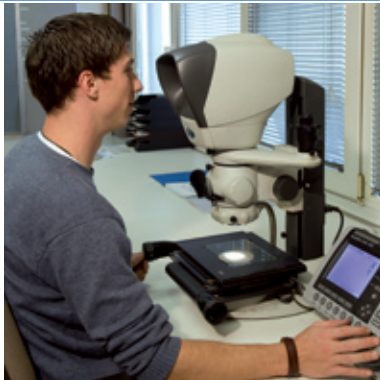
Warehouse



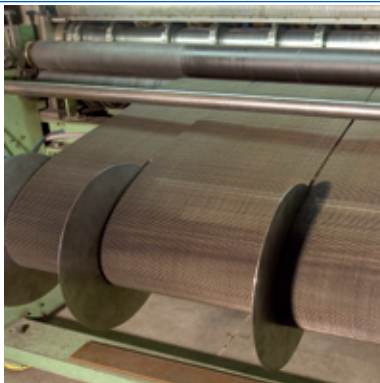
Light table



Measuring



Cutting

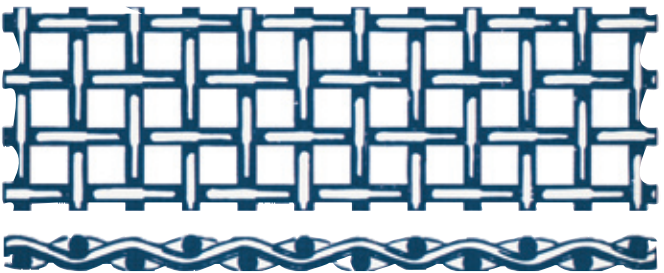


Plasma cutting



Square meshes, plain weave

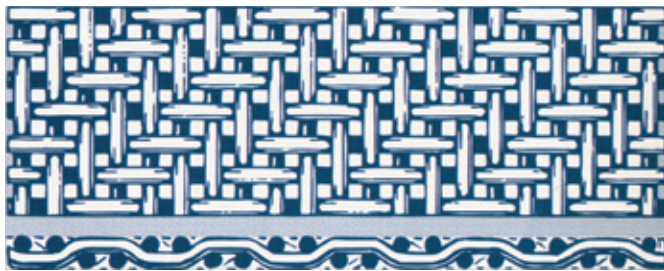
Wire Cloth in which each warp and shute wire is woven alternately over one and under one, giving a square plain weave.



Square meshes, twill weave

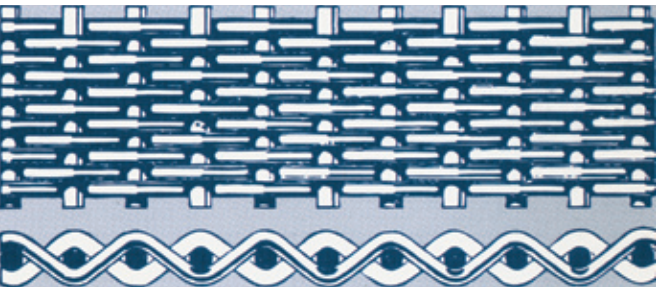
Wire Cloth in which each warp and shute wire is woven alternately over two and under two.

Compared to plain weave the open area is smaller.



Plain dutch weave

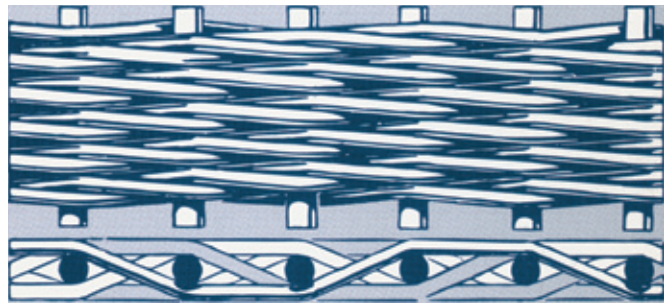
Wire filter cloth, woven in a plain weave pattern having few and thicker warp wires and many and thinner weft wires, beaten closely together.



Twilled dutch weave

Twill dutch is of a similar construction to plain dutch i.e. fewer thick warp wires, many thin weft wires, except the weave pattern is twill which allows the maximum number of weft wires.

Dutch twill is a surface filtration media and allowing the smallest openings.



Reverse plain dutch (PZ)

This the reverse of nominal dutch. The largest number of wires is found in the warp and the lesser number in the weft. The weft wires are much thicker than the warp wires. This construction is characterised by high stability at good throughput and excellent regeneration.

