



## BT25 LAB TO LIGHT PRODUCTION

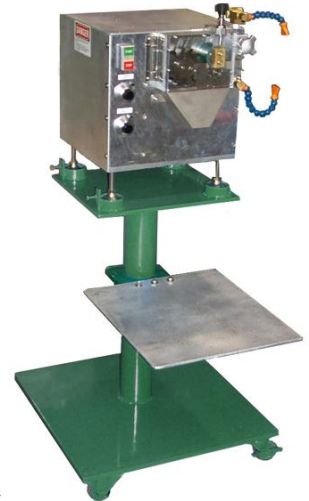
RATES FROM 1 TO 100 LB/HR

### BT25

- 1-4 strands of Olefin Materials
- 1-100 lb/hr
- Spring activated UFR
- Safety Interlock
- Tool Less Entry
- Easy Clean Out

### Options

- Support Stand
- Intergraded Air Knife
- Water Bath and Recirculation System
- Carbide Tipped Rotors
- Uni-Base (common base for pelletizer & water bath)
- Pharmaceutical Grade
- High Speed (up to 156 ft/min)
- AC Variable Frequency Drive



- Proven Design
- Optimum Strand Control, Due to Offset UFR
- Dual Drive Standard, pellet length control on the fly
- Quick/Easy Maintenance



## SB SERIES LAB TO LIGHT PRODUCTION

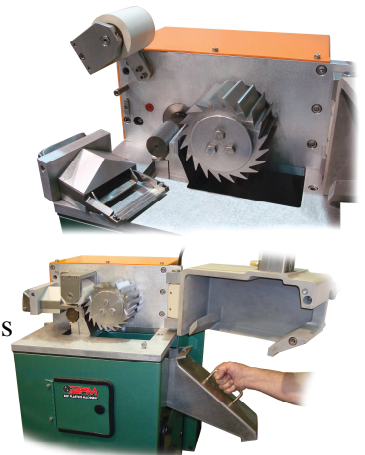
RATES FROM 25 TO 800 LB/HR

### SB50 & 100

- 1-15 Strands
- 25-800 Lb/hr
- Push/Pull Rotor Gap Control
- Removable Feed Table
- Removable Discharge Chute
- Easy Clean
- Tool Less Entry
- UFR Moves Parallel to the LFR
- Large Pneumatic Cylinder Improve Pulling Force

### Options

- Dual Drive
- Wear Package
- Extra Horse Power
- 14, 20, or 36 Tooth Rotors
- Custom Discharge Heights
- Work Platforms
- Water Baths and Air Knives



## Z SERIES LIGHT TO MEDIUM PRODUCTION

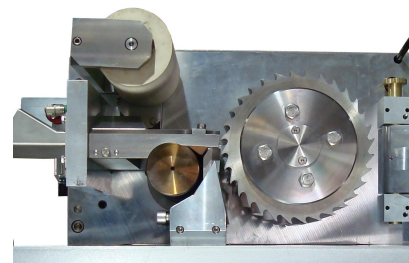
RATES FROM 100 TO 2,500 LB/HR

### Z 4" & 8"

- 1-40 Strands
- 100-2,500 Lb/hr
- Push/Pull Rotor Gap Control
- Removable Feed Table
- Removable Discharge Chute
- Easy Clean
- Tool Less Entry
- UFR Moves Parallel to the LFR
- Bed Knife Holder Supported by Iso Plate
- Large Pneumatic Cylinder Improve Pulling Force

### Options

- Dual Drive
- Wear Package
- Extra Horse Power
- 32, or 46 Tooth Rotors
- Custom Discharge Heights
- Work Platforms
- Water Baths and Air Knives



## AXP SERIES MEDIUM PRODUCTION

RATES FROM 500 TO 6,500 LB/HR

### AXP

- 1-80 Strands
- 500-6,500 lb/hr
- 50% Less Floor Space
- Serpentine Belt Drive
- UFR Driven from LFR
- Push/Pull Gap Control
- Rotor Bearings Ball Bearings
- Large Pneumatic Cylinders
- Easy Clean Cutting Chamber
- Removable Discharge Chute
- Tool Less Entry

### Options

- Dual Drive
- Wear Package
- 32 Tooth Wedge Lock Rotors
- 16, 24, 48, or 60 Tooth Rotors
- Extra Horse Power
- Custom Heights
- Work Platforms
- UFR Drive
- Water Baths and Air Knives



## BX SERIES MEDIUM TO HEAVY PRODUCTION

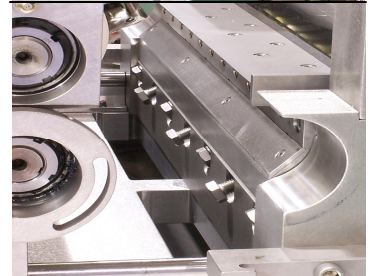
RATES FROM 1,000 TO 11,000 LB/HR

### BX Series

- 1-130 Strands
- 1,000-12,500 lb/hr
- Push/Pull Gap Control
- Rotor Bearings Ball Bearing
- Large Pneumatic Cylinders
- Mounted on Cutting Chamber Cover
- Tool Less Entry

### Options

- Dual Drive
- Wear Package
- Various Tooth Rotors Available
- Extra Horse Power
- Custom Heights
- Work Platforms
- Water Baths and Air Knives

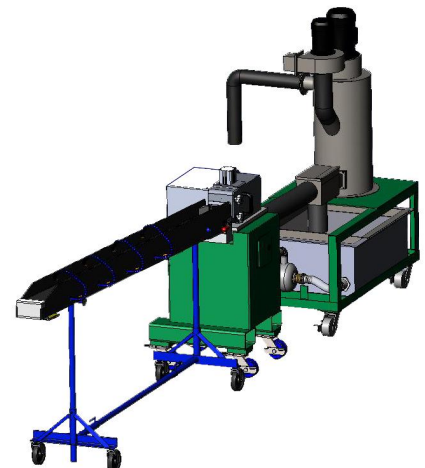
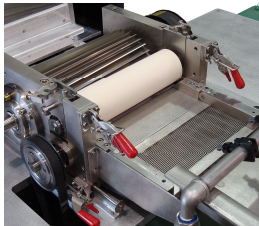
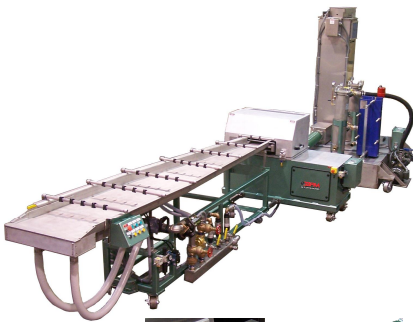


## WET CUT WATER SLIDES

RATES FROM 20 TO 11,000 LB/HR

### Wet Cut Water Slides

- 1-130 Strands
- 20-12,500 lb/hr
- Self Stranding Systems
- Fully Automated Systems
- Small Lot/Low Cost Version Available
- Turn Key Systems
- Improved Flow Sluice Box
- Extremely High Throughputs
- Designed for Specific Applications/Materials.
- Complete Systems from Die to Dryer



# BAY PLASTICS MACHINERY

3494 NORTH EUCLID AVE, BAY CITY, MI 48706 \* 989-671-9630 PH

E-MAIL [JIMFORGASH@BAYPLASTICSMACHINERY.COM](mailto:JIMFORGASH@BAYPLASTICSMACHINERY.COM) WEB [BAYPLASTICSMACHINERY.COM](http://BAYPLASTICSMACHINERY.COM)

## DRY CUT WATER SLIDES

RATES FROM 2 TO 8,000 LB/HR



### Dry Cut Water Slides

- 1-130 Strands
- 2-8,000 Lb/Hr
- Strands are Carried Down the Slide to the Belt Water is Drop off at the Belt
- Heat in Material Flashes Water Off the Strands.
- Excess Water is Removed by Vacuum through the Belt and Positive Pressure above the Belt
- Designed for Specific Applications/ Materials



## SPECIALTY PRODUCTS

### LONG FIBER AND MICRO PELLETS

#### Long Fiber Pellets

- Line Speeds up to 150 f/min
- Cutting Gap of 0.00025ö
- Cut Length to 2ö
- Reinforced Bed Knife
- Dual Fly Wheels to reduce Vibration (AXP Only)
- Available in Lab or large Production

#### Micro Pellets

- Pellets from 0.04ö to 0.02ö
- Independent Drive for Feed Roll
- Maintaining Strand Orientation
- Precise Gap Control
- Proprietary Rotor Design

US Patent 7,393,201 B2



## WATER BATHS

### WBX Water Baths

- Sizes from
  - 6ö wide x 6ö deep x 6ö Long To
  - 30ö wide x 12ö deep x 30ö long
- Vertical Adjustments
- Adjustable Over Flow Weir
- Adjustable Spreader Bars
- Heavy Duty Stainless Steel Tank
- Painted Support Base
- Optional Water Recirculation Systems Available from
  - 3,000 BTU/Hr to 1,000,000 BTU/Hr



**BAY PLASTICS MACHINERY**

3494 NORTH EUCLID AVE, BAY CITY, MI 48706 \* 989-671-9630 PH

E-MAIL JIMFORGASH@BAYPLASTICSMACHINERY.COM WEB BAYPLASTICSMACHINERY.COM

## AIR KNIFES

### AK SERIES AIR KNIFE

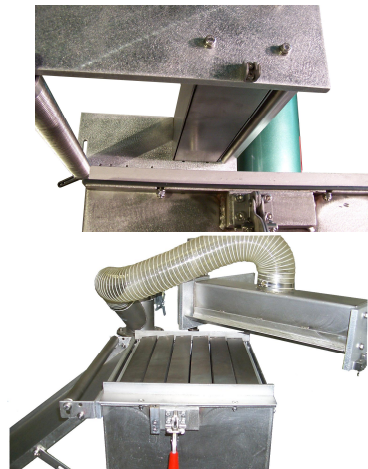
- Available in 6ö, 12ö & 18ö
- Horsepower Varies from 2 to 3
- Air Flow from 335-495 CFM
- Rust Free Material Contact Points
- Air Nozzle is Open Ended to Assist Start UP
- Coarse Air Filter
- Adjustable Height
- Strand Guides Can be Adjusted as Needed to Control Strands
- Self Contained Electrics, Including Motor Starter



## VACUUM DEWATERING UNITS

### VAK Series Vacuum Air Knife

- Available in 12ö, 16ö, 24ö, and 32ö
- Horsepower varies from 7.5 to 25
- Air Flow from 1,260 to 3,531 CFM
- Vacuum Pressure from 16-18ö H2O
- Uses a Combination of Vacuum and Positive Pressure to Remove Water from Strands
- Water is Separated from Air and Contained
- Wear Package Available
- Tilting Option Available
- Water Pump Available to Pump Water Back into System
- Rust Free Design



## SPARE PARTS, SERVICE, REBUILD AND SUPPORT

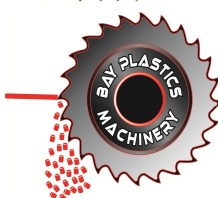
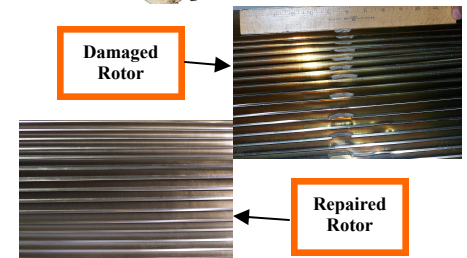
### Spare Parts



- Rotors
- Stellite, Wedge Lock, Bolt On
- Bearings for Rotors and Feed Rolls
- Bed Knives and Doctor Blades
- Parts Available for
- BPM Machines, Conair, Scheer, Reduction Engineering, Automatik
- New Rotors for all Types and Manufactures

### Rebuild and Support

- Available from our Bay City Michigan Facility
- Experienced Service Engineers and Start Up Support(30+ Years)
- Complete Rebuild of
- BPM Machines, Conair, Scheer, Reduction Engineering, Cumberland
- Repairable Stellite Rotors
- Re-sharpening of all Types of Manufactures Rotors



## BAY PLASTICS MACHINERY

3494 NORTH EUCLID AVE, BAY CITY, MI 48706 \* 989-671-9630 PH

E-MAIL [JIMFORGASH@BAYPLASTICSMACHINERY.COM](mailto:JIMFORGASH@BAYPLASTICSMACHINERY.COM) WEB [BAYPLASTICSMACHINERY.COM](http://BAYPLASTICSMACHINERY.COM)

