

Electric Submersible Sewage Pumps



caprari
pumping power

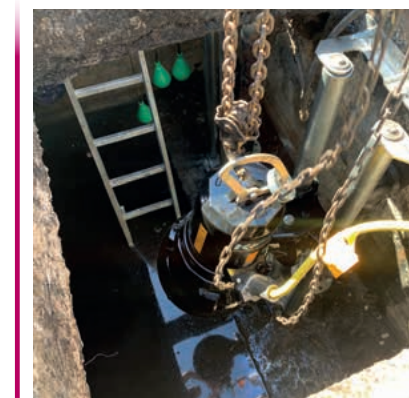
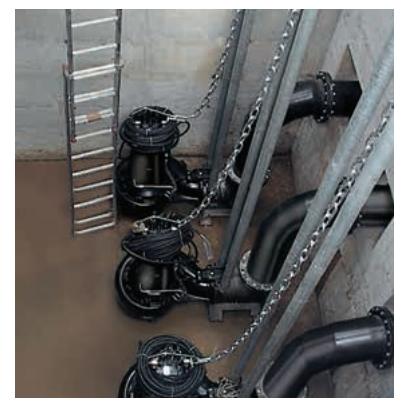
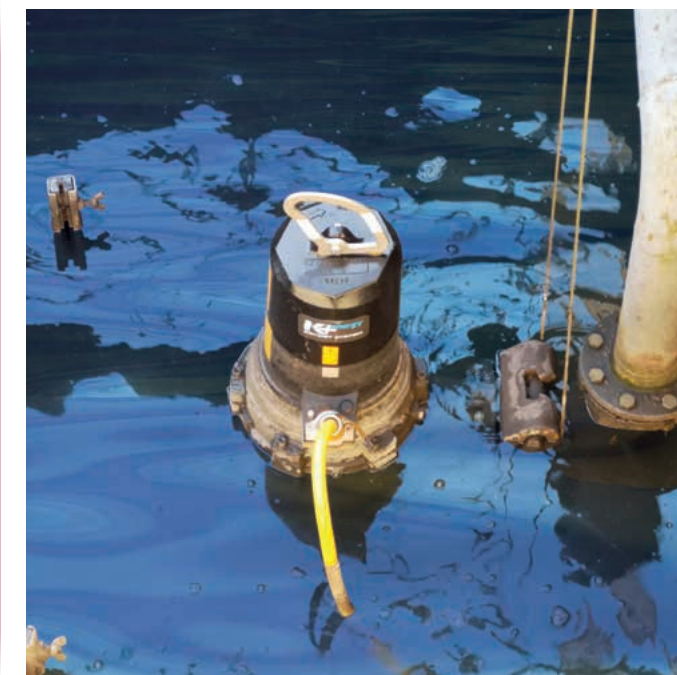
**PREMIUM EFFICIENCY
AND DRYWET SYSTEM
TOP INNOVATION AND VERSATILITY**

THE SAME ELECTRIC PUMP MODEL FOR ALL APPLICATIONS



K+ SERIES | DN40 ÷ DN350

caprari



Ideal for

WASTEWATER TRANSPORT

WASTEWATER TREATMENT PLANT

INDUSTRY

STORMWATER

Submersible electric pumps for waste water

The K+ series electric pumps are designed to pump sewage containing gas, compacted solids and long fibrous material. The pumps can be supplied for fixed or submersible installation with base frame, and the design has paid particular attention to achieving a good overall efficiency to ensure that the pumps are as cheap as possible to run. The hydraulic section is close coupled to the electric motor making the pumping unit compact, easy to install and reliable in operation.

Features

- Extremely sturdy
- Compact
- Highly efficient
- Maximum reliability in heavy duty conditions
- Remarkable energy savings and reductions in maintenance costs



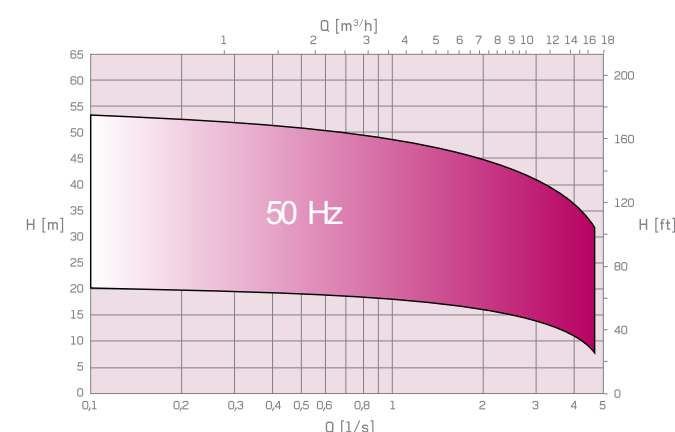
Maximum reliability

- Anti-sedimentation system on the suction side
- Fibre-cutting system near the back impeller and consequent protection of the mechanical seal
- Blades on the hub disc, which exercise a double effect: cleaning the area for seal protection as well as axial thrust compensation for bearings protection
- Amongst the widest free passages in the category

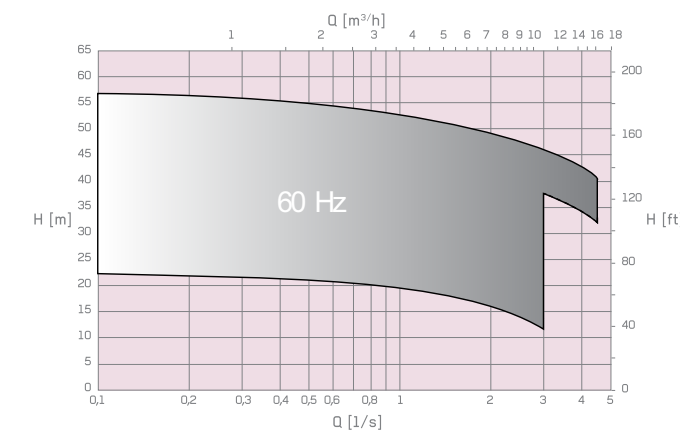


DN40

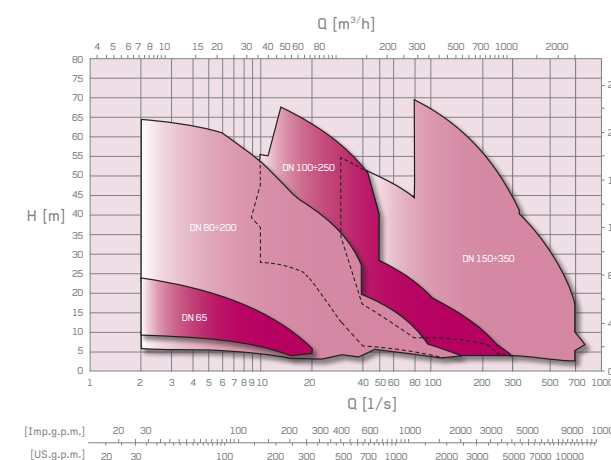
DN350



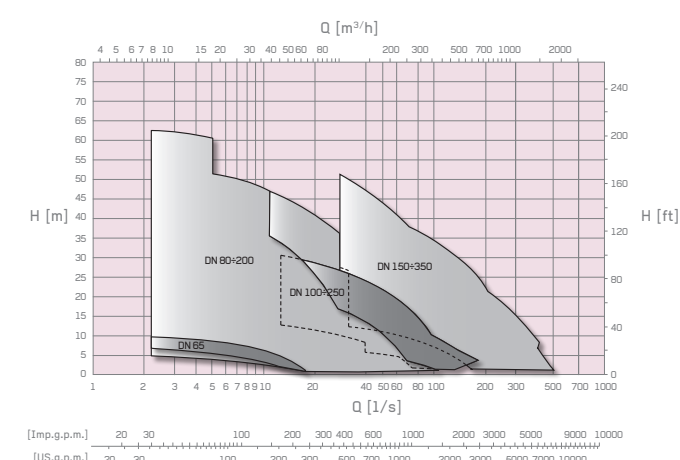
KT+ 50Hz



KT+ 60Hz



K+ 50Hz



K+ 60Hz

DN40 ÷ DN250



New submersible electric pumps for waste water

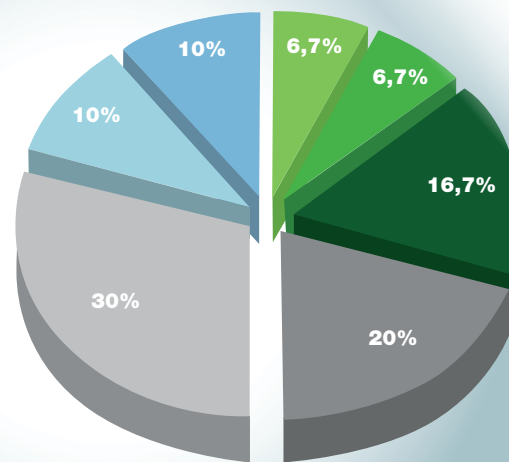
The new K+ Energy electric pumps are designed to ensure a premium efficiency level complete with motors in accordance with IE3 efficiency class. The Energy range features the new patented "DRYWET" cooling system, which allows its use both in tanks and dry chambers. Reliability, robustness and longevity are the features that have always distinguished the K+ hydraulic systems, these remain unchanged.

Reduction of the environmental impact

- Low energy consumption thanks to motors in IE3 class
- Reduced CO₂ production.
- 90% reduction in the amount of oil required to lubricate the mechanical seals

LIFE CYCLE COST

- Environmental cost
- Installation Commissioning and Training
- Maintenance and repair cost
- Operational cost
- Energy cost
- Downtime cost
- Decommissioning cost



Visit the website
dedicated to K+ ENERGY series

www.kenergy.caprari.com

DRYWET SYSTEM

Caprari International Patent

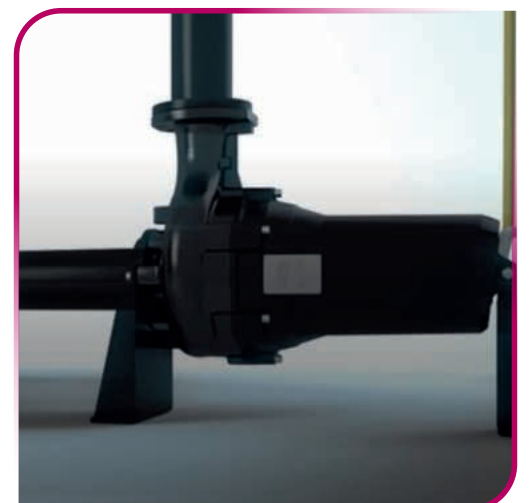
Cooling system patented by Caprari

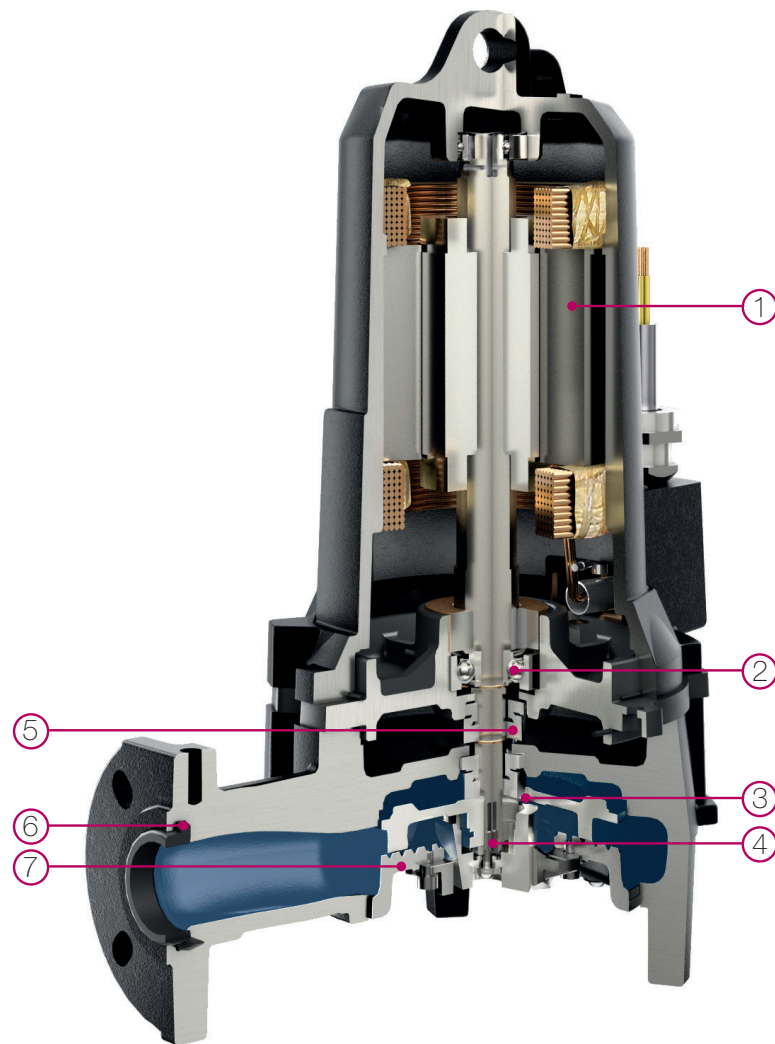
"DRYWET System" is supplied as standard on all the electric pumps of the Energy range and enables customers to use a single model both for submerged applications and in dry chambers. The cooling system can be activated by simply adding oil to the pump. "DRYWET" is an easy and efficient system that does not require additional maintenance, does not dissipate energy for the benefit of the electric pump performance and, in case of fault of the first mechanical seal, remains nevertheless fully operational.

WET PIT



DRY PIT





2 LONG-LIFE BEARINGS
Bearing stress has been limited in these pumps.



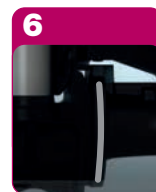
3 SELF-CLEANING AND NON-CLOGGING HYDRAULIC PART
The hydraulic profiles have been accurately designed to notably reduce the risk of rotating parts becoming clogged and/or blocked by solids that are particularly hard to shred.



4 RECOVERY OF HYDRAULIC SPECIFICATIONS
These can be easily recovered whilst the pumps are operating since clearance caused by wear between the impeller and frontal disk can be reduced.



5 DOUBLE MECHANICAL SEAL
The two individual mechanical seals ensure a higher level of safety for the electric motor, cost effect to replace individual seals and easier disassembly and maintenance.



6 GASKET BETWEEN PUMP AND COUPLING FOOT
The system ensures perfect sealing and no leakage.

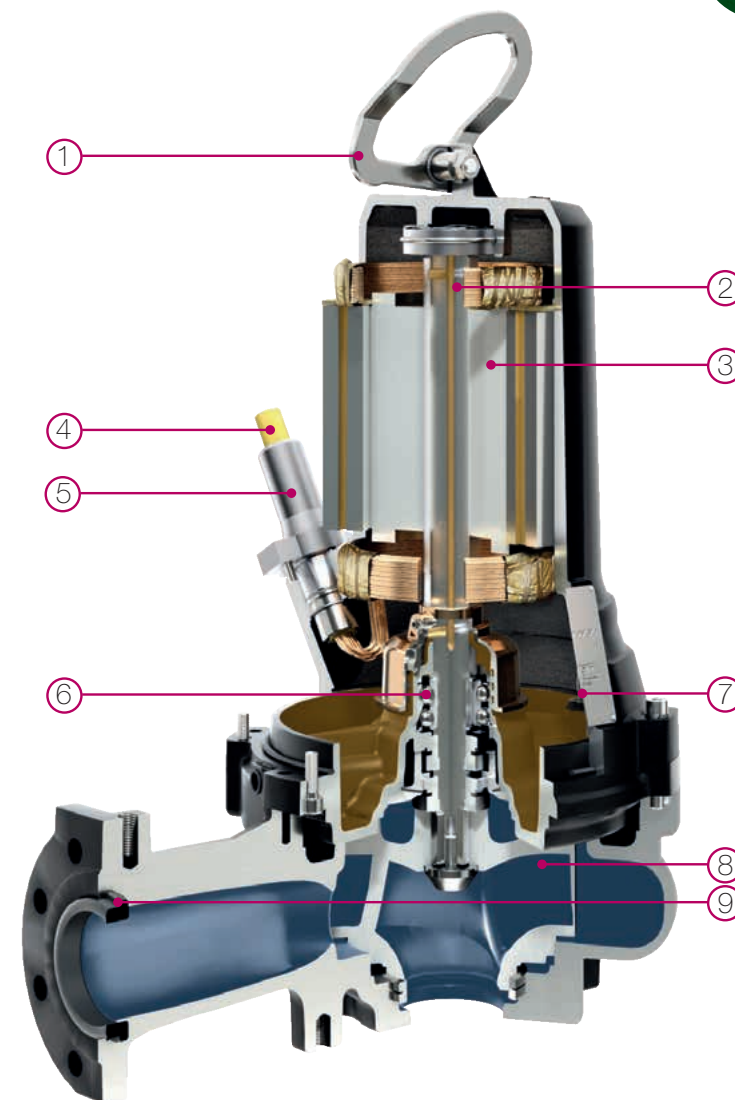


7 LONG-LASTING SHREDDER
Made of very hard stainless steel, the shape of the shredder ensures long-life and fade-free shredding capacity. No particular tools are required to replace this part.



1 IE3 EFFICIENCY CLASS MOTORS
The motor ensures a premium efficiency. The high level of the motor efficiency grants a significant energy savings.

H CLASS ELECTRICAL INSULATION
Provides maximum resistance to thermal changes. High-performance materials and new, even "cooler" motors means maximum operation reliability also in the most thermally hard duty applications.



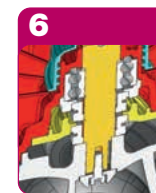
3 IE3 EFFICIENCY CLASS MOTORS
The motor ensures a premium efficiency. The high level of the motor efficiency grants a significant energy savings.



4 NSSHOU-J DOUBLE SHIELDED CABLE
Normally used for ATEX installations is now standard for better resistance to thermal overloads.



5 PLUG
It allows disconnecting the electric pump without the need to disconnect from the panel, therefore a much easier and therefore faster maintenance procedure. The design of the plug prevents humidity from entering the motor.



6 DOUBLE MECHANICAL SEAL
The two individual mechanical seals ensure a higher level of safety for the electric motor, cost effect to replace individual seals and easier disassembly and maintenance.



7 CONDUCTIVITY PROBE
The probe is fitted within the oil chamber submersed in the oil box, also in the ATEX version (Caprari International Patent) and detects any water infiltration into the motor warning when maintenance is required.



8 ANTICLOGGING SYSTEM



9 GASKET BETWEEN PUMP AND COUPLING FOOT
The system ensures perfect sealing and no leakage.

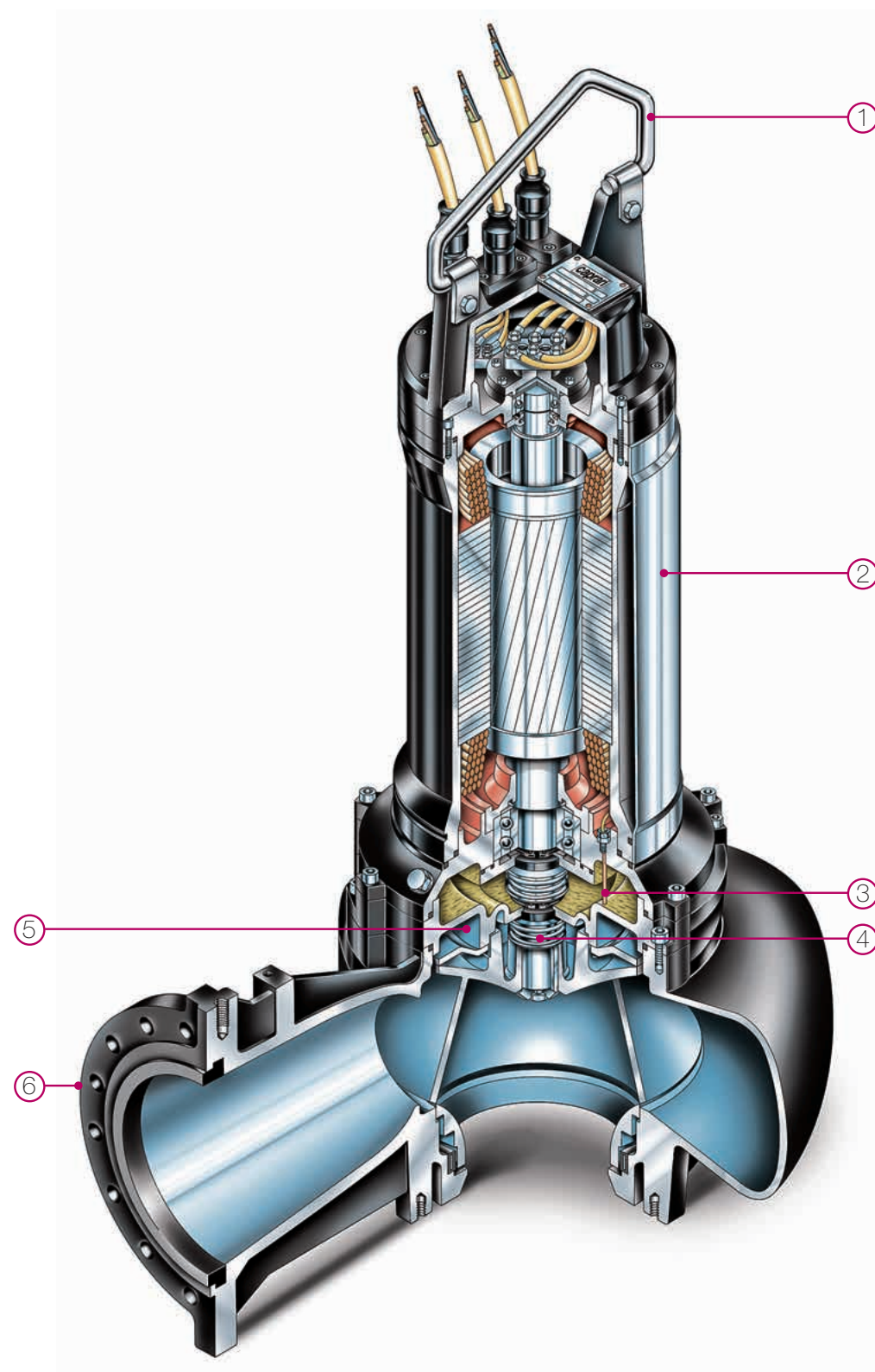


1 HANDLE
The robust precision-cast stainless steel handle ensures easy handling.



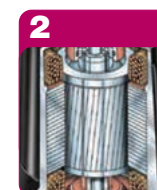
2 DRYWET SYSTEM

Caprari International Patent



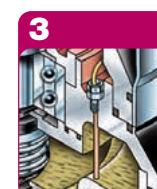
HANDLE

The robust precision-cast stainless steel handle ensures easy handling.



MOTOR

High motor efficiency grants a significant energy savings.
"Cold" motor since the temperatures reached are lower, this leads to protection of the winding, and mechanical components.



CONDUCTIVITY PROBE

It detects any water infiltration into the motor warning when maintenance is required



DOUBLE MECHANICAL SEAL

- two separate mechanical seals
- standardized mechanical seals from the market (non-proprietary design)
- easy, economical maintenance
- the seal on the pump side can be replaced without having to remove the oil reservoir and leaving the motor protected by the other sea.

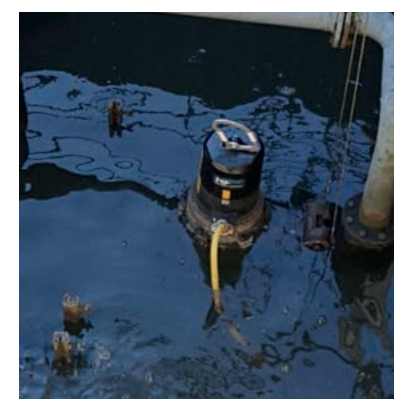


GASKET BETWEEN PUMP AND COUPLING FOOT

The system ensures perfect sealing and no leakage.



ANTICLOGGING SYSTEM













Service

The know-how developed in Caprari together with and the great knowledge of solving complex water problems allow us to offer a pre and after-sales service. This enables our customers to choose the right products and solutions in terms of functionality, flexibility, and operating efficiency.



pumping power

CAPRARI IN THE WORLD

	CAPRARI SPA
	BOMBAS CAPRARI S.A.
	CAPRARI FRANCE SAS
	CAPRARI PORTUGAL LDA
	CAPRARI TUNISIE S.A.
	CAPRARI PUMPS (UK) LTD
	CAPRARI PUMPEN GMBH
	CAPRARI HELLAS S.A.
	CAPRARI PUMPS SHANGHAI CO. LTD.
	CAPRARI PUMPS AUSTRALIA PTY LTD



ISO 9001
ISO 14001
ISO 45001
BUREAU VERITAS
Certification



www.caprari.com

Pump Control Technology

Boosting and Distribution of surface water

Water Collection and Distribution

Wastewater Transport and Treatment