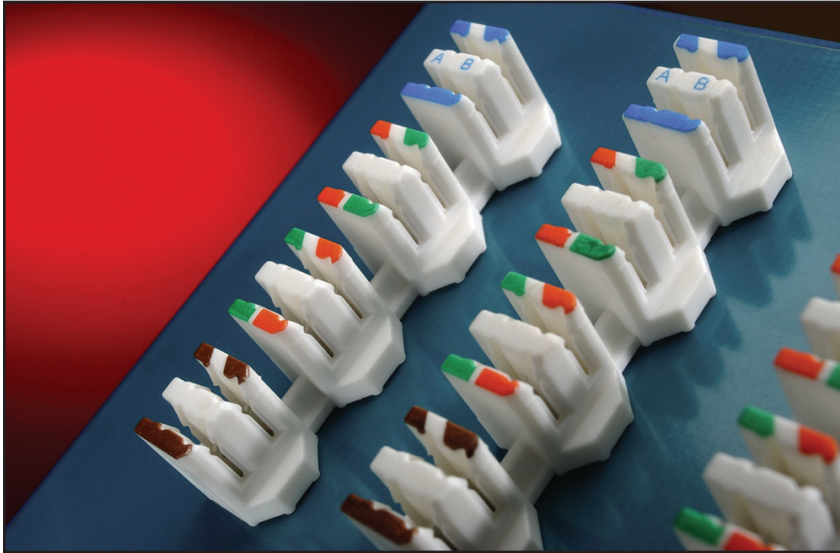


SS-51 Punch Down Blocks



SS-51 Series Punch Down Blocks

Features / Benefits

- Designed for Category 6a applications
- Facilitates field cable termination
- Notched-head design secures cable prior to termination
- Compatible with industry standard termination tools
- Designed for AWG 22-26 solid copper wire
- Pre-printed with TIA 568A/B color coding
- Block design provides excellent pair-to-pair crosstalk performance
- Available in 1, 2, 3 and 4 pair configurations
- Design allows staggered pair-to-pair spacing to reduce alien crosstalk in multi-port configurations
- RoHS6 compliant

Part Number	Description
SS-51000-003	8 Way Punch Down Block, no printing
SS-51000-004	8 Way Punch Down Block, with printed color code
SS-51000-005	4 Way Punch Down Block, no printing
SS-51000-006	2 Way Punch Down Block, no printing

Bel Stewart Connector GmbH

Industriestrasse 20
61381 Friedrichsdorf
Germany
Tel 49-6172-9552-0
www.belstewart.com

Bel Stewart Connector

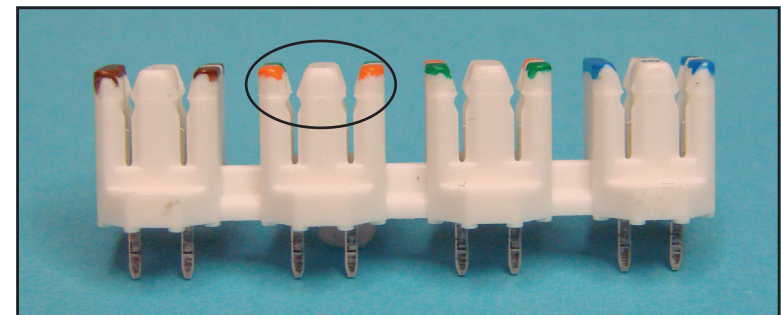
11118 Susquehanna Trail South
Glen Rock, PA 17327
Tel 717-235-7512
Fax 717-235-4675
www.belstewart.com



Bel Stewart's new series SS-51 of Punch Down Blocks help simplify field termination of AWG 22-26 solid copper wire cables. Optimized for Category 6a environments, the SS-51 Series features a unique notched head design that holds the wire securely in place prior to termination.

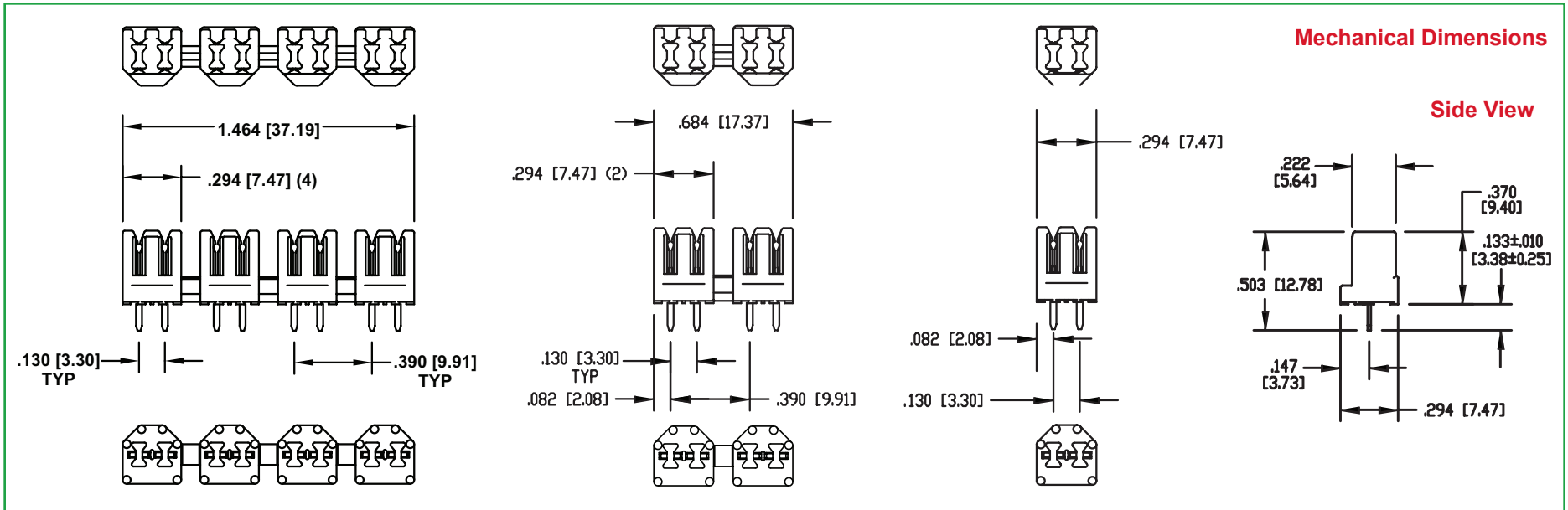
The SS-51 series can be employed for wire termination in both patch panels and wall outlets using industry standard termination tools. Available in 1, 2, 3 and 4 pair configurations, the SS-51 are pre-printed with TIA 568A/B color coding. Optional color-matching to wire is also available.

The unique design of the SS-51 Series Punch Down Block allows for staggered pair to pair arrangements in multi-port applications reducing alien cross talk in CAT6a applications.



Notched-head design holds wire in place before termination.

SS-51 Punch Down Blocks



Bel Stewart Connector GmbH
 Industriestrasse 20
 61381 Friedrichsdorf
 Germany
 Tel 49-6172-9552-0
 www.belstewart.com

Bel Stewart Connector
 11118 Susquehanna Trail South
 Glen Rock, PA 17327
 Tel 717-235-7512
 Fax 717-235-4675
 www.belstewart.com



Pre-printed colors or optional custom color wire matching.

