

supfina

Superfinishing-Machine

Supfina LeanCostMachine®



**Versatile production
machine for small runs**



Supfina

LeanCostMachine®

Versatile production machine for small runs

With its new LeanCostMachine, Supfina offers versatility of the highest level for superfinishing small and medium-size runs – economically and flexibly. This extremely versatile modular system, fitted out with state-of-the-art machine technology, meets the highest standards of quality and process dependability, in particular in such fields as the automotive industry, OEM suppliers, the hydraulics and aerospace industries, power generation and medical technology.

The Supfina LeanCostMachine® can be equipped with ready-assembled modules designed to match specific machining tasks. Whether fixed in place, manually adjustable or NC controlled, as many as six Supfina attachments for stone and tape finishing can be used at the same time as brushing and polishing attachments.

Thanks to the unique design of this installation, all the modules can be integrated into the machine with no further effort. In developing this sophisticated design, not only the best possible configuration of the various Supfina attachments was taken into account, but all the additional machine assemblies such as the switch cabinet, safety cover, attachment mount and operating panel can all be fitted to ready-made holders or bolted to predefined places to suit the current needs.

The machine itself can be freely configured to match the installation conditions on-site and the workpiece feed. Consistent standardization of all the assemblies ensures short delivery times, easy expansion and the highest quality in terms of machine construction and products finished.

Supfina LeanCostMachine® – affordable, versatile and fit for the future.

Versatile machining options

				
Between centers	✓	✓		✓
Three-jaw chuck	✓	✓	✓	✓
Collet	✓	✓	✓	✓
Centerless on rollers	✓	✓		



This modular Superfinish machine from Supfina's Lean Cost range enables us to take your individual needs into account in a way never before possible to meet today's constantly changing requirements and space availability.

Thanks to its customer-orientated design and the all-round housing, the machine provides optimum ergonomic accessibility.

Supfina

LeanCostMachine®

The versatile modular system

Attachment mount

As many as six Supfina attachments can be fitted to the NC slide or dovetail guide or installed permanently on the machine base.



Up to two NC slides can be used for a maximum of three tool mounts



The dovetail can be used with up to two slides for a maximum of three tool mounts



The machine base has ready-made holes for manual attachment

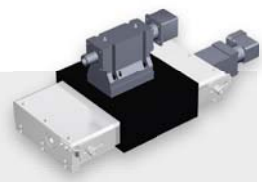
Workpiece holder

We provide exactly the right workpiece clamping system for every machining process. The change-over is quick and cost effective.

- Between centers
- Three-jaw chuck
- Collet
- Centerless on rollers



Spindle



NC slide

Workpiece feed

Here, too, the Supfina LeanCost-Machine® demonstrates exceptional flexibility both in its standard configuration and after retooling.

The workpieces to be machined can be manually placed in adjustable workpiece holders or automatically positioned or fed through by an optional infeed system from above,

the front or the side straight into the work space. Even completely automated integration in a production line can be easily organized in this way.

Machine base

The basic machine is available as two different types. While the standard version will take a

maximum of three attachments, the extended version will take up to six.

Operating panel

Whether a permanently attached control panel or a portable operating panel is preferred, the LeanCostMachine can be equipped with both.

Switch cabinet

The switch cabinet can be freely positioned on any one of three sides of the machine.

Coolant filtration trolley

The mobile coolant filtration trolley, with a capacity of 150l, is integrated into the machine base to save space.



Supfina LeanCostMachine®

Sophisticated – down to the last detail

Besides shaft-like shapes such as gear shafts, balancer shafts, cam-shafts and eccentric shafts, pinion racks and the flat areas of ring seals, bucket tappets and friction washers can easily be machined. As a rule, all materials from soft steel to extremely hard ceramic can be superfinished.

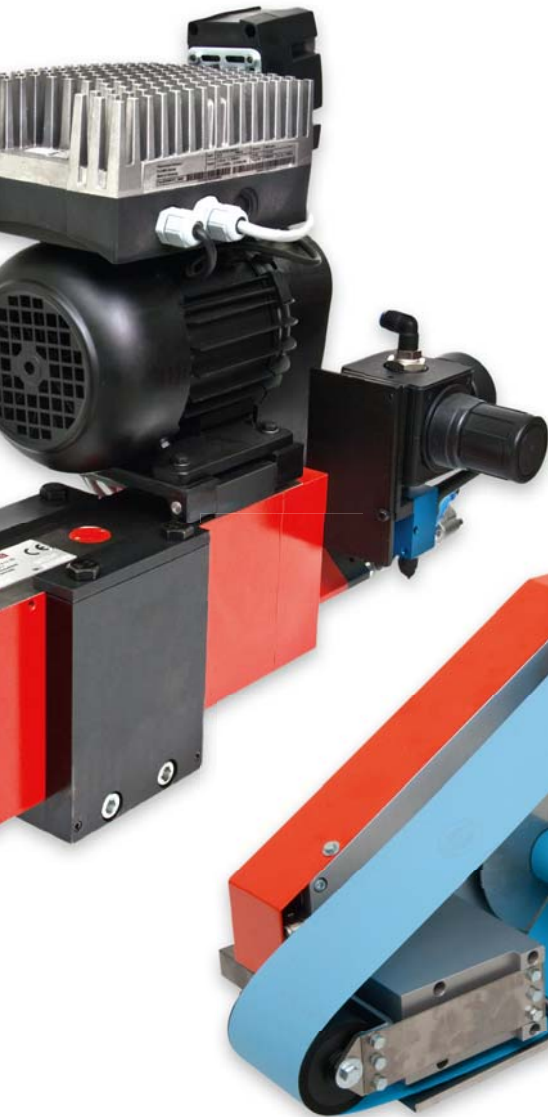
The machine base is made of a heavy, rigid, torsion-free, state-of-the-art steel construction. This guarantees smooth spindle action and vibration-free manufacture to ensure maximum quality for your products.

All our Lean Cost Machines can be fed manually or by means of a gravity-feed, gantry-feed, robot or metering belt load/unload system. This means that, at any time, economical part handling is guaranteed from one-off manufacture through to series production.

The Supfina LeanCostMachine® can be lubricated with an emulsion, finishing oil or a minimal quantity lubrication system. Machine base lubrication can be incorporated.

Economical solutions – for you. Just ask us how.

Technical specifications	Supfina LeanCostMachine®
Floor space required in mm	2000x1150 including coolant filtration trolley
Paint finish	Housing RAL 7035 Doors RAL 3020
Distance between centers in mm	40–800
Center height in mm	1110 from floor level 260 from machine table
Drive output	400 volts / 50 Hz with neutral lead
Compressed air supply	4,5–6,0 bar
Loading	manually, by hand
Controller	Siemens S7-315 with Mobile Panel 177
Superfinish tools	Superfinish tape or stone, cup-wheel, Brushing and polishing disk
Coolant rinse	Emulsion, oil or dry
Options	<ul style="list-style-type: none"> • Machine with partial housing • Automated loading and unloading • Quick-change tooling • Filtration unit with 55 to 150 litres • Special paint finish



Siemens Mobile Panel 177



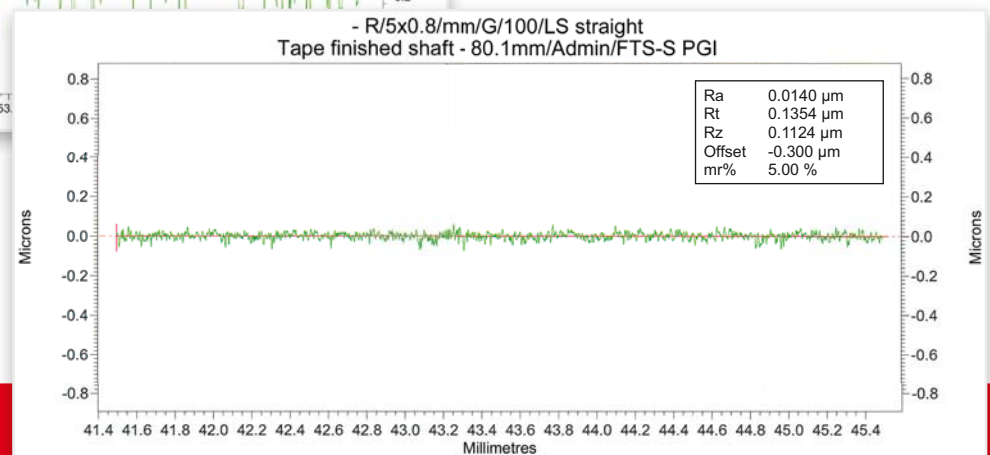
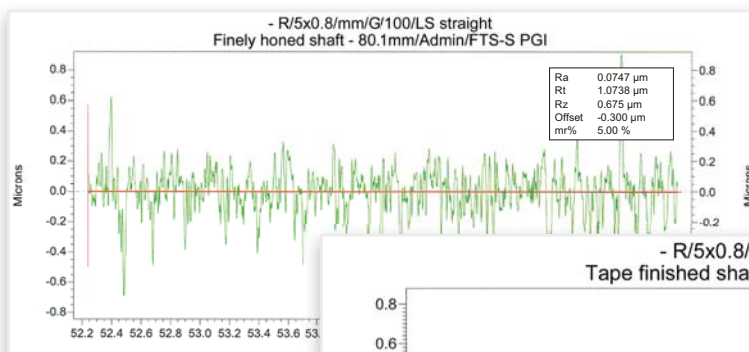
Good accessibility through rear hatch

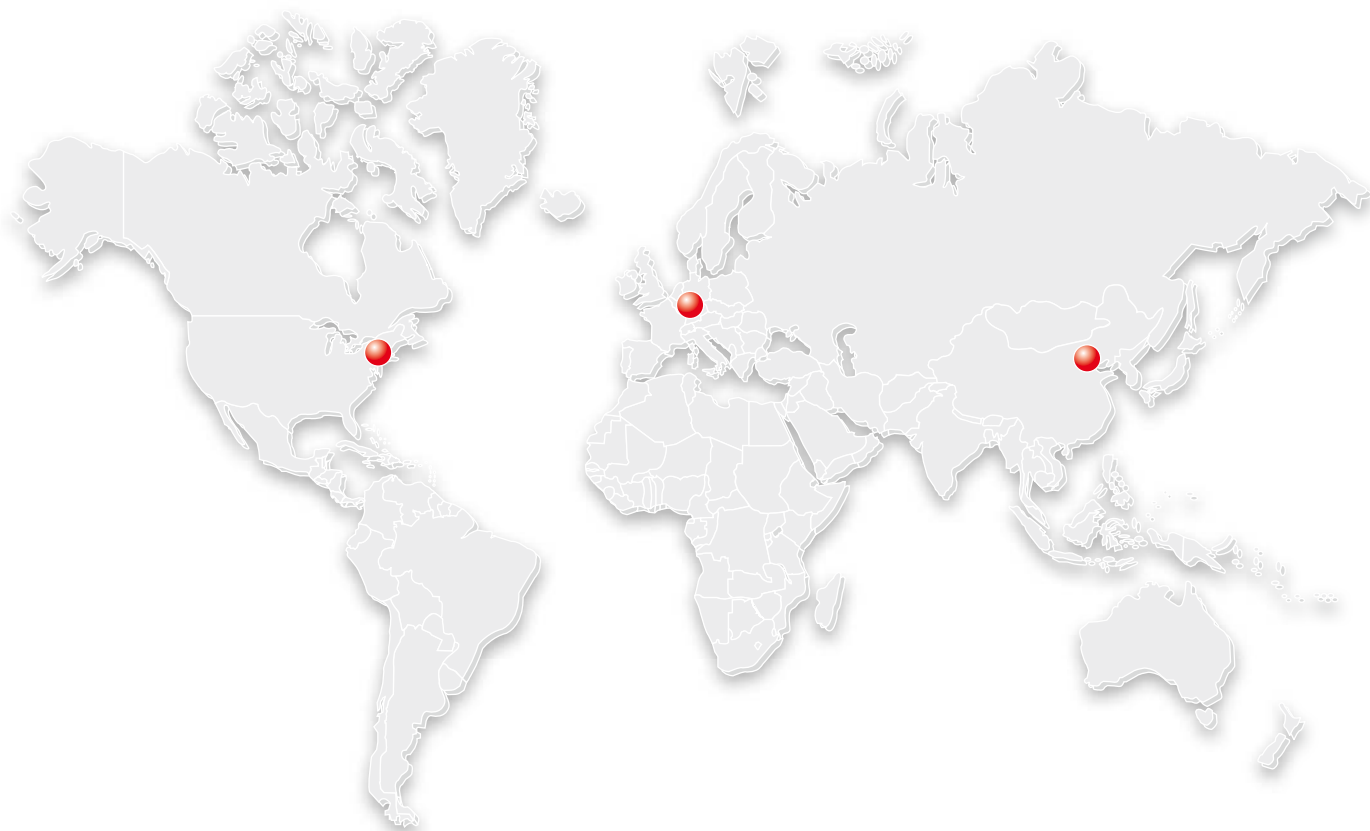


Brushing and polishing unit



Mobile coolant filtration trolley:
incorporated in the machine base





Surface Finishing Systems
www.supfina.com



With locations in America and Asia and over 50 distributors worldwide we can offer customers comprehensive global service.



Supfina Grieshaber GmbH & Co. KG
 Schmelzegrün 7 · 77709 Wolfach / Germany
 Phone +49 7834 866-0 · Fax +49 7834 866-200
 info@supfina.com · www.supfina.com



Supfina Machine Company, Inc.
 181 Circuit Drive · N. Kingstown, RI 02852 / USA
 Phone +1 401 294-6600 · Fax +1 401 294-6262
 info@supfina.com · www.supfina.com



Supfina Grieshaber GmbH & Co. KG
 Beijing representative Office
 DiYang Tower 1202B
 Chaoyang District Beijing 100027 / P.R. China
 Phone +86 84536-669 · Fax +86 84536-670
 supfina@126.com · www.supfina.com