

FOUR COLORS of MHI



 **MITSUBISHI HEAVY INDUSTRIES, LTD.**

Head Office

<Mitsubishi Heavy Industries Head Office Building>

2-16-5 Konan, Minato-ku, Tokyo, 108-8215, Japan

Phone: 81-3-6716-3111

<Yokohama Building>

3-3-1 Minatomirai, Nishi-ku, Yokohama-shi, Kanagawa, 220-8401, Japan

www.mhi-global.com

COMPANY PROFILE

Message from the President

In its long journey together with customers, partners, other individuals and societies since its foundation in 1884, Mitsubishi Heavy Industries (MHI) has sought to pioneer new approaches in manufacturing. These efforts have yielded many products that have enriched the lives of people around the world, and through them MHI has contributed to the development of societies.

In recent years, China, India and other emerging nations have shown remarkable growth and are expanding their presence in the global market, while the shale revolution has transformed the recovery and growth of the U.S. economy. If the MHI Group is to establish its value to society in this environment, we must maintain all aspects of our operations — our technological capabilities, price competitiveness, customer services and earning strength — at a top level internationally.

The MHI Group's turnover stands at approximately 3 trillion yen. However, to build new platforms for corporate development and social contribution as a manufacturer that supports the foundations of society and industry, we are striving to become a high-revenue enterprise with a global market presence on a business scale of 5 trillion yen.

To maximize the powerful synergy of the MHI Group, we have reorganized our 700 products into four business domains (divisions): "Energy & Environment," "Commercial Aviation & Transportation Systems," "Integrated Defense & Space Systems," and "Machinery, Equipment & Infrastructure." We are also reorganizing our management structure to ensure each domain actively expands its business based upon its own optimal business strategy.

Accordingly, it is important for us to adopt a stance of flexibly incorporating that which we require and concepts from external sources that will benefit us, and to shift to global standards of thought and techniques, while still maintaining a corporate culture that affirms the high technological level and constant drive for improvement that embody the strengths of the MHI Group.

We will also aim to make the most of our strengths by working with excellent partners to nurture our business growth, both in terms of size and profitability.

We express our value to society through our CI statement, "Our Technologies, Your Tomorrow."

Every member of the MHI Group shares the firm intention to "continuously provide an assured future where people can live safe, secure and enriched lives through technologies that can excite people and passion as a manufacturer for the sustainability of the earth and humankind."

Inspired by the strong passion of our CI statement, we have taken up the challenge of transforming ourselves into a company with a truly global presence.

Please continue to support the MHI Group in this goal.

As a Manufacturer, the MHI Group Provides an Assured Future through Technologies and Passion

Shunichi Miyanaga, President and CEO



Our Technologies, Your Tomorrow

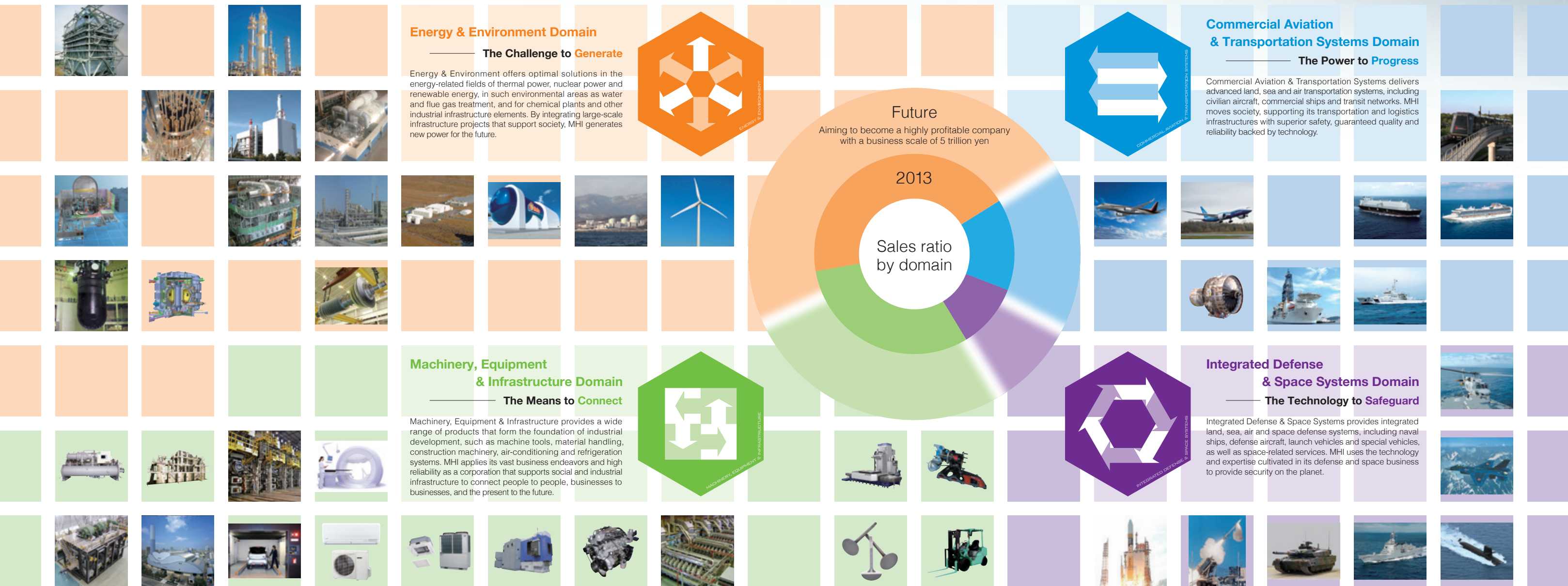
Creating New Potential for the Planet with Future-Focused “*Monozukuri*”

Energy and resource depletion, global warming, food and water shortages, regional disparity, environmental pollution...

At Mitsubishi Heavy Industries, our focus is on the resolution of these and other world problems in order to realize a more abundant, secure society in the future.

To maximize use of more than a century of wide-ranging technologies, MHI has shifted to a structure of four business domains.

MHI has taken the first step toward becoming a corporation with an undeniable global presence, one that will draw out the planet’s potential — the first step toward ensuring a secure future.





Energy & Environment

Generating Sustainable Energy Sources for Tomorrow's Society

SBU	GTCC Large Conventional Plant & Service Industrial Conventional Plant & Service Onshore Wind Turbine Offshore Wind Turbine Photovoltaic Power System Marine Diesel Engine Marine Machinery Pump & Hydro Turbine	Power Generation Project Development Nuclear Turbines New Products Desalination Plant Geothermal Power Plant SOFC Lithium-ion Battery Nuclear Power Plant (Domestic) Nuclear Power Plant (Global)	Nuclear Fuel Cycle & Advanced Solutions Chemical Plant Environmental Plant
-----	---	---	--

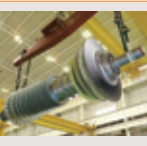


Providing the world with optimum solutions as a global leader in the fields of energy and environment.

Modern society is confronted with many issues, including the depletion of fossil fuels and the environmental burden caused by greenhouse gases. Using technology developed over its long history, MHI is promoting energy and social infrastructure projects that will enrich everyday life while minimizing environmental impact and contribute to the provision of an infinite source of sustainable energy.

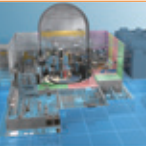
Thermal Power Systems

Mitsubishi Hitachi Power Systems, Ltd.
In February 2014, MHI and Hitachi, Ltd. established Mitsubishi Hitachi Power Systems, Ltd. as a joint enterprise. The company provides GTCC and a diverse lineup of gas turbines, strengthening its worldwide product business and working to resolve energy and environmental issues.



Nuclear Energy Systems

Nuclear power generation does not create CO₂ emissions. MHI is contributing to the stable supply of power as a world's leading integrated plant manufacturer and is expanding its comprehensive lineup of pressurized water reactor plants, major equipment and other world-class technology for Japan and overseas as well.



Chemical Plant & Infrastructure

MHI fills a worldwide range of industrial infrastructure needs by providing safe and highly reliable fertilizer, methanol and petrochemical plants; oil and gas plants; water treatment, seawater desalination and CO₂ recovery plants; and LNG tanks and receiving terminals.



Renewable Energy

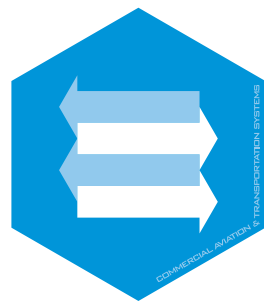
MHI provides large wind turbines, a wide variety of pumps and other low-environmental-impact energy technologies. The company also plans to start mass production of offshore wind power generation equipment in the European market. By bringing together technology from various fields, we aim to realize a low-carbon society.



Marine Machinery & Engines

Mitsubishi Heavy Industries Marine Machinery & Engine Co., Ltd.
MHI-brand marine products are found in approximately half of the world's large merchant fleets. The company and its licensees produce UE engines, MET turbochargers and other various marine machineries providing total solutions for marine transport with emphasis on energy savings and eco-friendliness.





Commercial Aviation & Transportation Systems

Keeping Society Moving Actively in Every Field on Earth

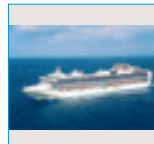
SBU | Commercial Ships
Land Transportation System
Boeing Sustaining
787
Bombardier
MRJ
Commercial Aero Engines
Established Commercial Airplanes



Faster, safer, more efficient. Striving for ideal transportation.

In today's society, transportation infrastructures don't exist simply to move people and carry goods. In a way, they are just as essential as blood vessels are in the human body. They support business, add richness to everyday life and energize society. MHI provides total support for land, sea and air transport and is keeping an eye on urban development from the perspective of movement.

Shipbuilding & Ocean Development



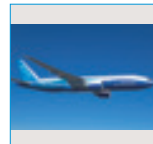
MHI draws upon more than a century of tradition and technology compiled over its long history to design and build commercial ships, special-purpose vessels and offshore marine structures capable of meeting a wide range of needs. Outstanding performance and economic efficiency ensure these vessels sail throughout the world's oceans.

Land Transportation Systems



MHI is expanding its business both at home and abroad with high-speed rail projects and urban transit systems, such as the LRT and AGT (Automated Guideway Transit). The AGT, in particular, has proven itself convincingly in the world market. The company also provides safe, comfortable transportation infrastructure, including full turnkey project implementation.

Commercial Aircraft



MHI supplies fuselage sections – the main structure of aircraft, wing boxes and cargo doors to leading aircraft manufacturers worldwide, including Boeing, Bombardier and Airbus. The company's highly reliable technology facilitates comfortable air travel for passengers around the globe.

787 Project



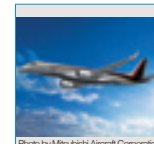
MHI designed and manufactures the main wings of the next-generation, super-efficient Boeing 787 Dreamliner. The company has further refined the design and manufacturing technology required for these full-fledged composite material wings – a first for passenger aircraft – securing its place as the "World's Wing Center."

Commercial Aero Engines



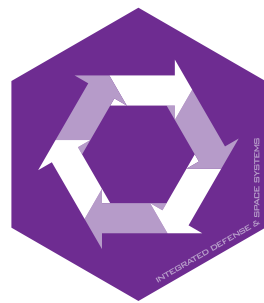
MHI supplies components for and is involved in international joint development of turbofan engines for commercial aircraft, supporting the global aircraft industry and helping to make air travel more comfortable. The company also contributes to environmental conservation through environmentally friendly engines that incorporate advanced noise-suppressing and reduced gas emission technologies.

MRJ Mitsubishi Aircraft Corporation



MHI is moving forward with developments in preparation for mass production of the next-generation regional jet, the MRJ*. By providing high operational economic efficiency, low environmental impact and a pleasant environment for passengers, MHI is aiming to help airlines improve their competitiveness and profitability.

*MRJ: Mitsubishi Regional Jet



Integrated Defense & Space Systems

Preserving Peace and Security with State-of-the-Art Technologies

SBU | Naval Ship
Defense Aircraft
Missile Systems
Defense Aero-Engines & Control Equipment
Maritime Systems
Space Systems
Special Vehicle

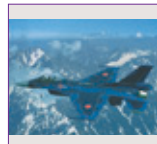


photo by JAXA

Constantly pushing beyond the boundaries of technology to safeguard mankind's peace and security.

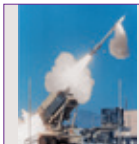
Rockets that strategically place satellites in orbit to monitor the earth. Defense equipment that must remain operational 24 hours a day, 365 days a year. Absolute reliability is demanded in a wide array of equipment, and the best of MHI's cutting-edge technologies are out on the front lines, safeguarding everyday life. MHI will continue its resolve to bring about security and long-lasting peace of mind.

Aircraft



Fighter aircraft and helicopters maintained by Japan's Ministry of Defense are manufactured under license from U.S. companies, while development of the F-2 close support fighter is a joint effort between Japan and the U.S. Being responsible for the fuselages in the development of domestically produced patrol and next-generation transport aircraft, MHI serves a vital role in the preservation of peace.

Guidance & Propulsion Systems



MHI helps guarantee security by developing and manufacturing surface-to-air missile systems and other types of ballistics as well as government-commissioned engines and control equipment for aircraft and missiles for Japan's Ministry of Defense. The Group also plays a leading role in joint Japan-U.S. research and development into ballistic missile defense.

Space



MHI leads Japan's space industry with the development, manufacture and complete launch services of the domestically produced H-II A/B launch vehicles, the international space station resupply H-II transfer vehicle (HTV), and the Japanese experiment module "Kibo." The company is strengthening its competitiveness in the international market and responding to expectations for space development.

Special Vehicles



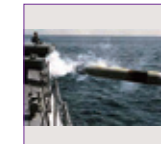
In addition to producing special vehicles for industry, MHI has developed and manufactured the Japan Ground Self-Defense Force's main battle tanks over four generations. The latest Type-10 tank includes unique technology that makes it compatible with integrated operations, helping to safeguard peace in Japan.

Naval Ships

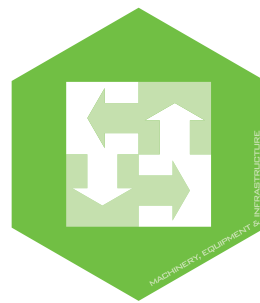


MHI designs and manufactures destroyers, submarines and many other types of naval ships for the Japan Maritime Self-Defense Force, contributing to the security of the seas surrounding Japan. The company is also responsible for regular overhauls and repairs after deployments.

Maritime Systems



MHI develops, produces and provides operational support for the torpedoes and vertical launching systems equipped on Maritime Self-Defense Force aircraft and surface ships. The company uses highly dependable state-of-the-art technology to provide efficient support for maritime defense.



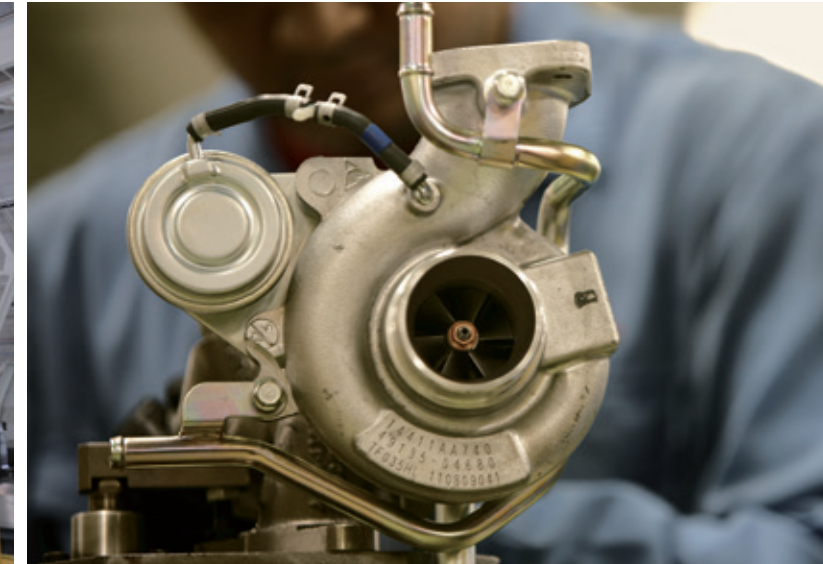
Machinery, Equipment & Infrastructure

High Standard of Living and Quality of Life, Coupled by Outstanding Advanced Technologies

SBU

Compressors
Metals Machinery
Environmental System
Mechatronics Systems
Industry and Precision Instruments
Advanced Mechanical System
Hydraulics & Machinery
Other Equipment
Turbocharger

Automotive Thermal Systems
Engine
Material Handling Equipment
Agricultural Machinery
Air-Conditioning & Refrigeration
Machine Tool



Supporting daily life and business through a vast range of technologies.

If society is to achieve lasting growth, it must possess a social foundation on which to realize quality of life and an industrial foundation to support the promotion of business. MHI combines the technologies refined through its experience as a *monozukuri* (manufacturing) company to support social infrastructure and uses the resulting multitude of solutions to promote the advancement of a sustainable society.

Engines



With an overwhelming share of the domestic market, MHI's diesel and gas engines deliver the world's highest power-generating efficiency. In addition to an array of power generating systems, the company also supports society with its wide range of engines used to power all types of equipment.

Automotive Parts



MHI supplies auto manufacturers with turbochargers, whose sales for passenger vehicles are forecast to expand dramatically, and high-efficiency automotive air conditioners. In response to growing global demand stemming from a tightening of emissions regulations, MHI delivers high-quality, high-performance products around the world.

Air-Conditioning & Refrigeration Equipment



MHI provides commercial heat pumps, module chillers, centrifugal chillers, transport refrigeration units, and residential and commercial air-conditioners to keep homes, office buildings and other spaces comfortable. Through improved economy and low-energy performance of these products, the company contributes to environmental conservation and prevention of global warming.

Machine Tools



MHI's precision cutting tools and a wide range of large machine tools and gear cutting machines boast a top-class share of world markets. Through *monozukuri* that strives for high precision and high productivity, MHI supports the infrastructure of world industries.

Hydraulics & Machinery



MHI manufactures a wide range of equipment, including hydraulic components used in construction machinery and power generators, and electro-hydraulic deck cranes for ships. Our company has also developed testing systems for car crash simulators and vibration testing equipment to protect human life from accidents and disasters.

Business Development Promotion



MHI produces cutting-edge equipment used in a wide range of fields, answering the needs of society with devices such as particle accelerators that help unravel the mysteries of space and matter, radiation therapy equipment for cancer treatment, and OLED panels, which are attracting attention as next-generation lighting.

Group Companies

(List includes operating companies only)

Mitsubishi Heavy Industries Compressor Corporation
Mitsubishi-Hitachi Metals Machinery, Inc.
Mitsubishi Heavy Industries Environmental & Chemical Engineering Co., Ltd.

Mitsubishi Heavy Industries Mechatronics Systems, Ltd.
Mitsubishi Heavy Industries Machinery Technology Corporation
Mitsubishi Heavy Industries Printing & Packaging Machinery, Ltd.

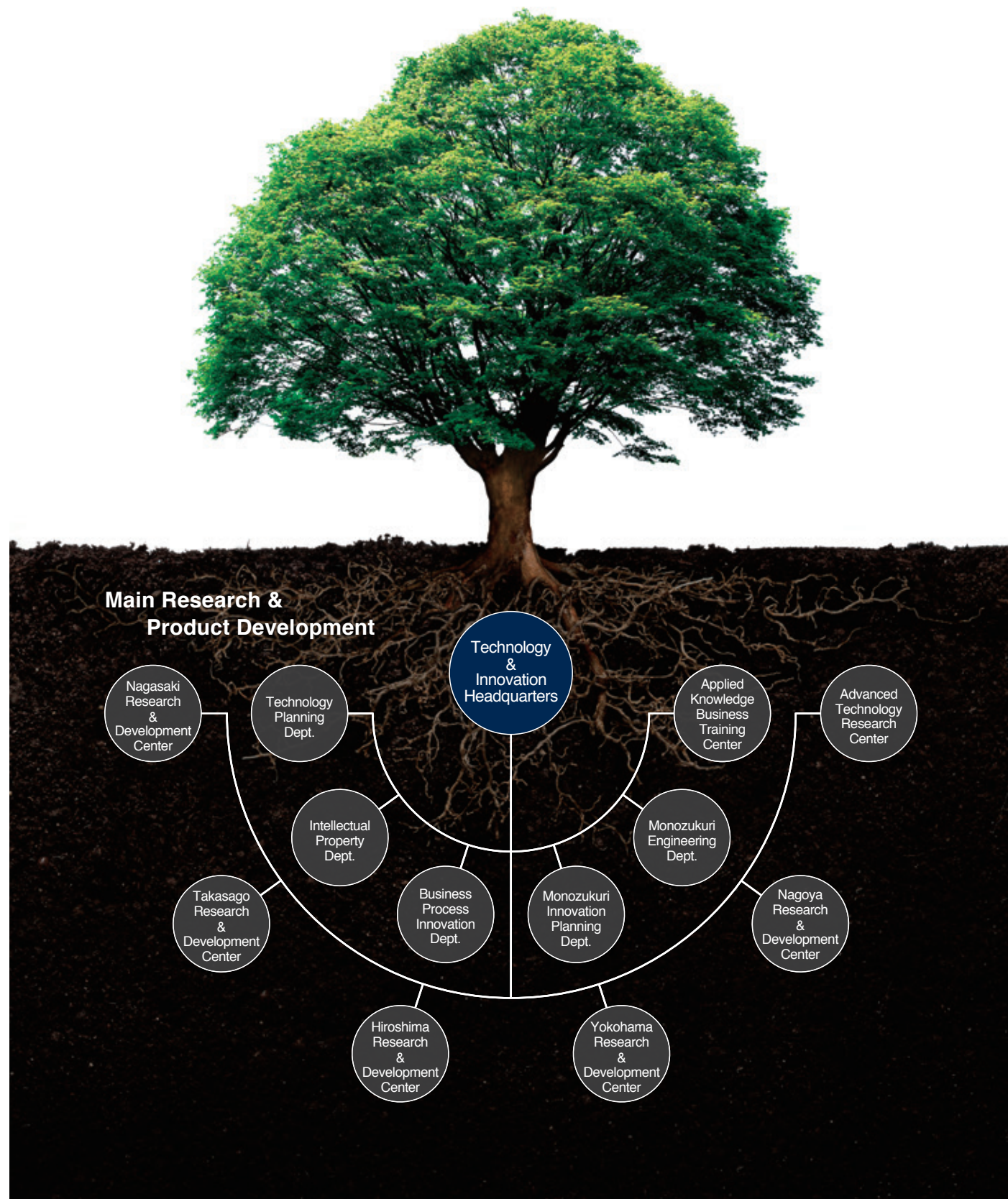
Mitsubishi Heavy Industries Food & Packaging Machinery Co., Ltd.
Mitsubishi Heavy Industries Plastic Technology Co., Ltd.
Mitsubishi Agricultural Machinery Co., Ltd.

Mitsubishi Heavy Industries Bridge & Steel Structures Engineering Co., Ltd.
Mitsubishi Heavy Industries Transportation Equipment Engineering & Service Co., Ltd.
Mitsubishi Heavy Industries Automotive Thermal Systems Co., Ltd.

Mitsubishi Nichiyu Forklift Co., Ltd.

Supporting Competitive Products, Services and Manufacturing Systems in the Global Market

Continuing to implement sophisticated design technologies and manufacturing processes throughout the value chain is essential to the evolution of our products. We remain focused on research and development of advanced technologies and manufacturing systems, which enables us to create breakthrough products and excellent customer service that will change the world.



Technologies in Support of Products

Ship resistance reduction technology using bubbles

Substantially reduce friction resistance by our unique air lubrication system (MALS), which effectively covers ship surface with a carpet of fine bubbles.

Designing safe and efficient turbomachinery through use of large-scale flow simulation technology

Examine details of flow phenomenon in turbomachinery and accurately predict the performance, which allows design optimization.

Lightning current simulation technology

Realize efficient lightning protection designs based on current distribution simulation technologies accurately reflecting aircraft structures and their electrical characteristics.

Example of Lightning Test

Photo by Mitsubishi Aircraft Corporation

Strength evaluation technology for H-II Transfer Vehicle (HTV)

Contribute to weight saving and improvement of reliability by application of high accuracy buckling simulation and strength test technology.

Real Scale HTV Strength Evaluation

Photo by JAXA/NASA

Material creation technologies for improvement of efficiency and reliability of products

Develop casting simulation technology and electronic structure simulation (material design) technology for creation of parts/materials featuring higher thermal resistance and higher reliability.

Directionally Solidified Blade

Casting Simulation



Promoting CSR through Manufacturing as an Innovative Contribution to Society

In accordance with the three principles that define the spirit of our creed, the MHI Group serves as a manufacturing corporation that contributes to societal progress through its business endeavors of delivering products and technologies in support of social and industrial infrastructure worldwide. In this way, MHI is contributing to the resolution of global issues.

MHI Group CSR Action Guidelines (formulated July 2007)

In order to ensure a secure future for the Earth, we will establish and maintain:

Close ties with the Earth

Safeguard an abundantly green Earth through environmental technologies and environmental awareness;


Close ties with society

Build a relationship of trust with society through proactive participation in society and trustworthy actions;

A bridge to the next generation

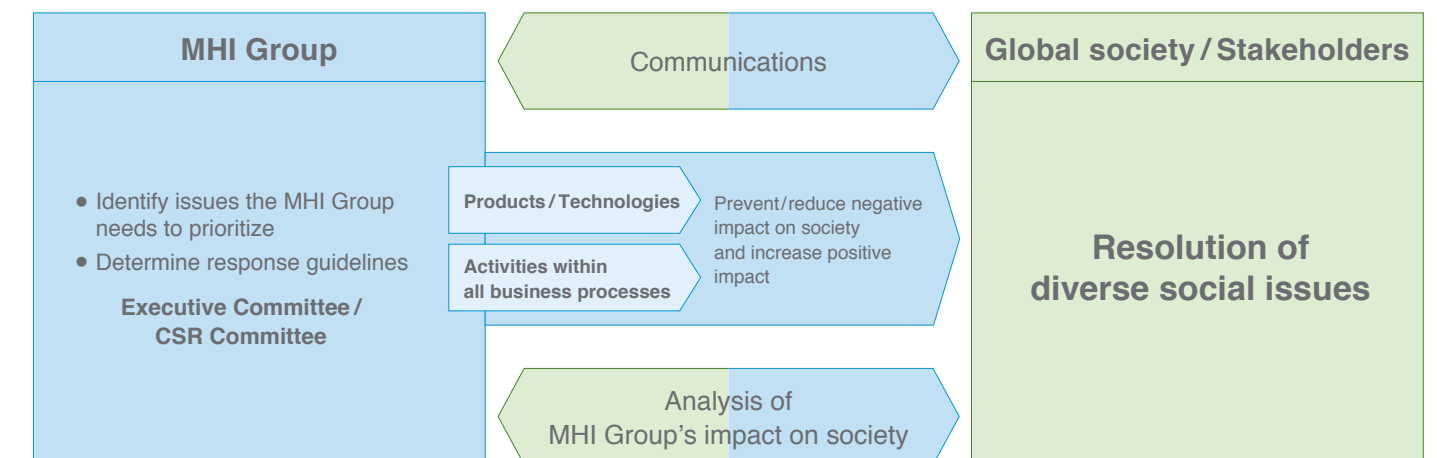
Contribute to the cultivation of human resources who can shoulder responsibility in the next generation through technologies that can realize dreams.

Based on our creed and CI statement, "Our Technologies, Your Tomorrow," the MHI Group has also instituted CSR Action Guidelines to serve as collective standards for all Group employees when conducting business activities centered on the principles of CSR.

 More detailed information on the CSR Action Guidelines is available for viewing on the website.
<http://www.mhi-global.com/company/csr/policy/guideline/index.html>

Relationship between Sustainable Society and Business-Integrated CSR

Promoting business-integrated CSR for a sustainable society



The MHI Group analyzes communications with stakeholders and its own global impact on environmental and other social issues, identifies the issues the Group should prioritize for the Executive Committee and CSR Committee sessions, and determines response guidelines. Based on these

guidelines, the Group proactively works towards the resolution of social issues through its products, technologies and activities within all business processes to prevent or reduce the Group's negative impact and increase its positive impact, and thereby contributes to the realization of a sustainable society.

MHI Environmental Vision 2030

Our Technologies, Your Tomorrow

The future of our planet rests in the sustained evolution of humankind while caring, with love and responsibility, for all life forms that inhabit it. MHI will continue to be a company indispensable to ensuring that future.

The MHI Group will pursue energy security while carrying forward environmental protection — not only of the earth but of space also — through its ability to develop new technologies and products, to achieve a secure future that is kind to the earth.



The MHI Group formulated the MHI Environmental Vision 2030 in June 2012, and promotes activities with an aim of achieving the 3Es (energy security, environmental protection and economic growth) through business.

 More detailed information on the MHI Environmental Vision 2030 is available for viewing on the website.
<http://www.mhi-global.com/company/csr/report/vision2030/index.html>



130 Years of History

MHI Technologies Have Supported Japan Across Rough Seas

One hundred and thirty years have elapsed since Mitsubishi first leased the government-owned Nagasaki Shipyard from the Ministry of Industry in 1884. MHI technologies have been instrumental in steering Japan's modernization and globalization through the upheavals of the Meiji, Taisho and Showa eras, and into today's Heisei era. The history of Japan's development is etched into the MHI technologies, products and services that underpin contemporary society.

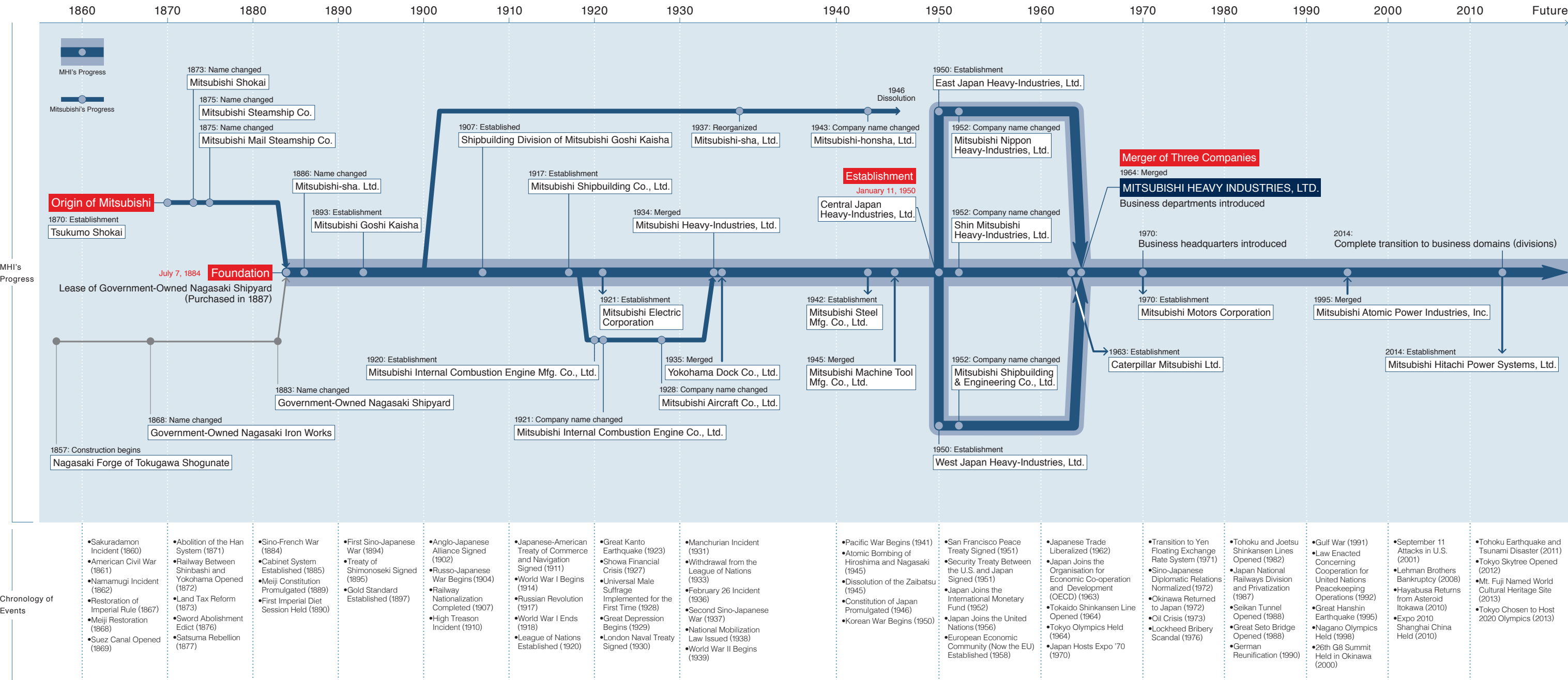
Creed

1. We strongly believe that the customer comes first and that we are obligated to be an innovative partner to society.
2. We base our activities on honesty, harmony, and a clear distinction between corporate and personal life.
3. We shall strive for innovative management and technological development from an international perspective.

Reason for Instituting the Creed

June 1, 1970

In Japan there are many enterprises with their own "creeds" which simply represent their management concept. Mitsubishi Heavy Industries, Ltd. has a creed of this type, also. This creed was instituted in 1970 on the basis of the policy advocated by Koyata Iwasaki, president of Mitsubishi Goshi Kaisha in the 1920s, to indicate the essential attitude of the company, the mental attitude of the employees, and the future directions of the company. The reason for instituting the present creed is so that all of us can call to mind our one hundred years of tradition, and strive for further development in the future.



Throughout Diversified Eras In Differentiated Fields, MHI Technologies and Products Have Continued to Astound

From MHI's early beginnings in Nagasaki Shipyard & Machinery Works, the company's business domains have spread from the ocean to land, air and even space. MHI will continue to broaden its business territories in search of ever-greater possibilities of *monozukuri*.



1939
• Produced the Zero Carrier Fighter



1963
• First flight of the MU-2 Turboprop Business Aircraft



1978
• First flight of the MU-300 Business Jet



1918
• Built passenger car, "Mitsubishi Automobile Model A"



1946
• Shifting to civilian production after the war, produced the Silver Pigeon motor scooters



1970
• Opened the Shonan Monorail, Japan's first suspended monorail system for commuter use



1931
• Manufactured Japan's first domestically produced tank, the Type 89 medium tank



1971
• Delivered the No.1 Fertilizer Plant to Iraq



1985
• Delivered the world's largest combined cycle power plant (Tohoku Electric Power, Higashi Niigata No. 3, unit 2; 545,000kW)



1884
• Founding. Leased the Nagasaki Shipyard from the government, and started a shipbuilding business



1908
• Built the "Tenryo Maru," Japan's first large passenger liner. Its gross tonnage was over 10,000 tons, a shipbuilding industry record.



1968
• Delivered the industry's first supercritical pressure boiler, Chubu Electric Power Chita No. 3 (1,700t/h)



1970
• Kansai Electric Power Mihama No. 1 PWR nuclear power plant went on line



1887
• Launched Japan's first steel steamship, the "Yugao Maru"



1929
• Launched the passenger ship "Asama Maru"



1942
• Built the world's largest battleship "Mutsu"



1968
• Japan's first container ship, the "Hakone Maru"



1983
• Delivered the first MOSS type LNG tanker



1989
• Completed the "Shinkai 6500," the deepest-diving submersible research vehicle



1975
• Successfully launched the first N-I Launch Vehicle



1986
• Successfully launched the first H-I Launch Vehicle



2007
• Launch services of H-IIA Launch Vehicle privatized. Launch services of first H-IIA after privatization was successful.



2009
• Successful launch of first H-IIB Launch Vehicle with the greatest lift capacity in Japan



2009
• Successful launch of first international space station H-II transfer vehicle (HTV) "Kounotori"



2012
• Started launch services for H-II Launch Vehicle, in addition to H-IIA. Services now able to handle larger satellites.



1996
• First flight of the "Global Express" Business Jet, jointly developed with Bombardier



2007
• Determined potential customers for the MRJ and launched marketing activities



2007
• First Boeing 787 main wing box shipped



1997
• Completed the world's first dry-cut gear cutting system, which uses no cutting fluid



2003
• Developed "wakamaru," a communication robot



2004
• Developed the world's first high precision four-dimensional radiation therapy system



2009
• Dubai Metro – the world's longest unmanned, fully automatic rail system – begins operations in Dubai



2009
• Introduction of the world's first hybrid forklift, the "GRENDA Ex Hybrid," with an engine comprising MHI's own lithium-ion rechargeable batteries



2011
• First mass-produced Type-10 tank completed



1969
• Completed the "Tata Bridge," Japan's longest cable-stayed bridge



2002
• Developed the world's fastest (90,000 copies/hr) newspaper offset press



2006
• Developed and sold the world's first mass-production machine for bonding waters at room temperature



2011
• Developed a container-configured 1.5MW gas engine generator set "MEGANINJA," which can begin power generation within 24 hours of its arrival at the installation site.



2011
• A "J-Series" gas turbine, with the world's highest efficiency, achieved the world's highest turbine inlet temperature of 1,600 degrees Celsius (°C) during the verification test.



1999
• Delivered a CO2 recovery plant to Malaysia



2000
• Delivered a refuse incineration plant with the world's largest throughput to Singapore



2004
• Developed a high-efficiency centrifugal chillers



2008
• Implemented world's first integrated coal Gasification Combined Cycle (IGCC) system



2009
• Commercial operation of Reactor 3 at the Hokkaido Electric Power Company's Tomari Nuclear Power Plant begins



1990
• Completed Japan's largest luxury cruise ship, the "CRYSTAL HARMONY"



1993
• Delivered the destroyer "Kongo"



2005
• Constructed deep sea drilling vessel "CHIKYU," which has the capacity to drill 7,000m under the seabed



2011
• Completed development of the new-generation LNG carrier "SAYAEENDO"

space

sky

land

sea

Future

1880 - 1945

Building a Transportation Infrastructure from Roots in Shipbuilding

MHI's *monozukuri* began with the lease of Nagasaki Shipyard & Machinery Works from the Ministry of Industry. Even as the company built Japan's first steel steamship and battleships, it applied the technologies and knowledge cultivated in those endeavors to begin production of automobiles and aircraft, expanding its range of business as a comprehensive manufacturer of transport equipment. As global tensions rose, the company entered into an age where its technologies — more advanced than in most countries at that time — would be diverted to military use.

Technology Topics

• Diesel Engine Invented (1895) • The Wright Brothers' First Flight (1903) • Jet Engine Invented (1937)

1946 - 1963

Supporting Post-War Recovery with Consumer Products

After the war, in accordance with national policy, MHI shifted its emphasis from military hardware to the development and manufacture of scooters, air conditioners, and many other types of consumer products. In 1950, in line with the GHQ's policy of dissolving large industrial groups (*zaibatsu*), MHI was divided into three independent companies. As a result, the scale of products grew more diverse, and the three companies fell into competition. However, this technology race would provide the foundation for the leading company in heavy industry.

• The Instant Camera (1947) • Integrated Circuit (1958) • Yuri Gagarin Becomes First Man in Space (1961)

1964 - 1990

Merging of Three Heavy Industry Companies Leads to Large-Scale Development

In 1964, the same year Tokyo hosted the Summer Olympics, the three principal heavy industry companies reunited, creating the current form of Mitsubishi Heavy Industries. Its products expanded to encompass the fields of land, sea and air, and included oil-drilling rigs, power plants, tankers and bridges. In addition, the successful lift-off of the H-II launch vehicle occurred around this time, and the company's participation in full-fledged space development began.

• Quartz Wristwatch (1967) • Apollo Manned Lunar Landing (1969) • Compact Disc (1980)

1991 - Present

Supporting a Sustainable Society as a Comprehensive Infrastructure Company

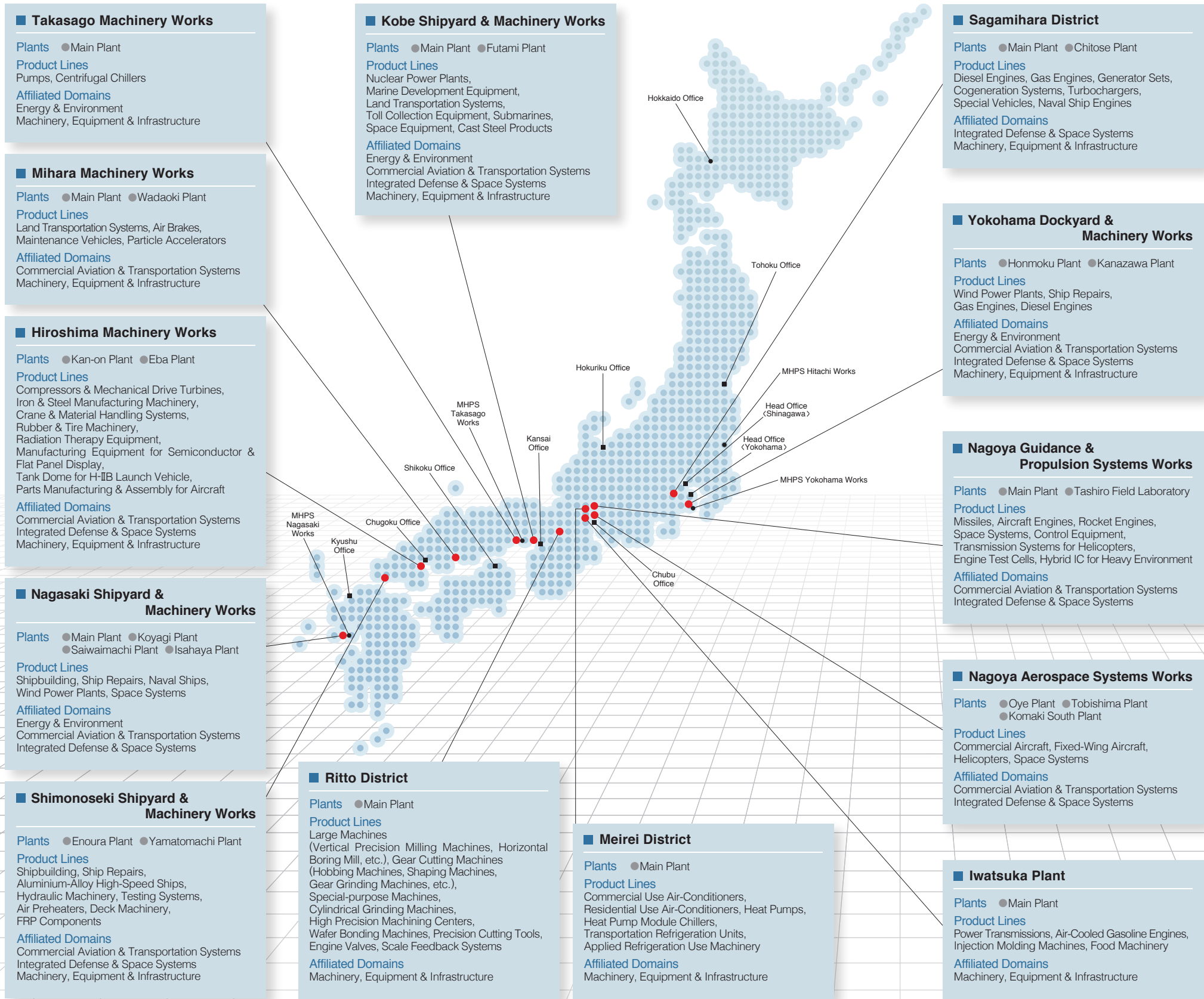
MHI has always sought high efficiency, and as the trend toward global environmental conservation gains momentum and the concept of ecology becomes commonplace, the company's gas turbine, eco-ship and other technologies and product fields are expanding on a global scale. As a comprehensive infrastructure company, MHI works to develop the technologies and products that will support a sustainable society.

• Popularization of the Internet (1995) • Hybrid Car Released (1997) • Blu-ray Disc (2002)



Responding to the Quality Demands of the Era with an Extensive Network and Refined Technologies

MHI's production sites support *monozukuri* at a much more advanced stage than the global average, and its approximately 60 main domestic Group companies provide these technologies and products in the form of a wide range of solutions. MHI Group production sites and companies work in close cooperation and respond to the needs of society with a comprehensive system that encompasses everything from product development and manufacture to sales and services.



Main Domestic Group Companies & Business Content

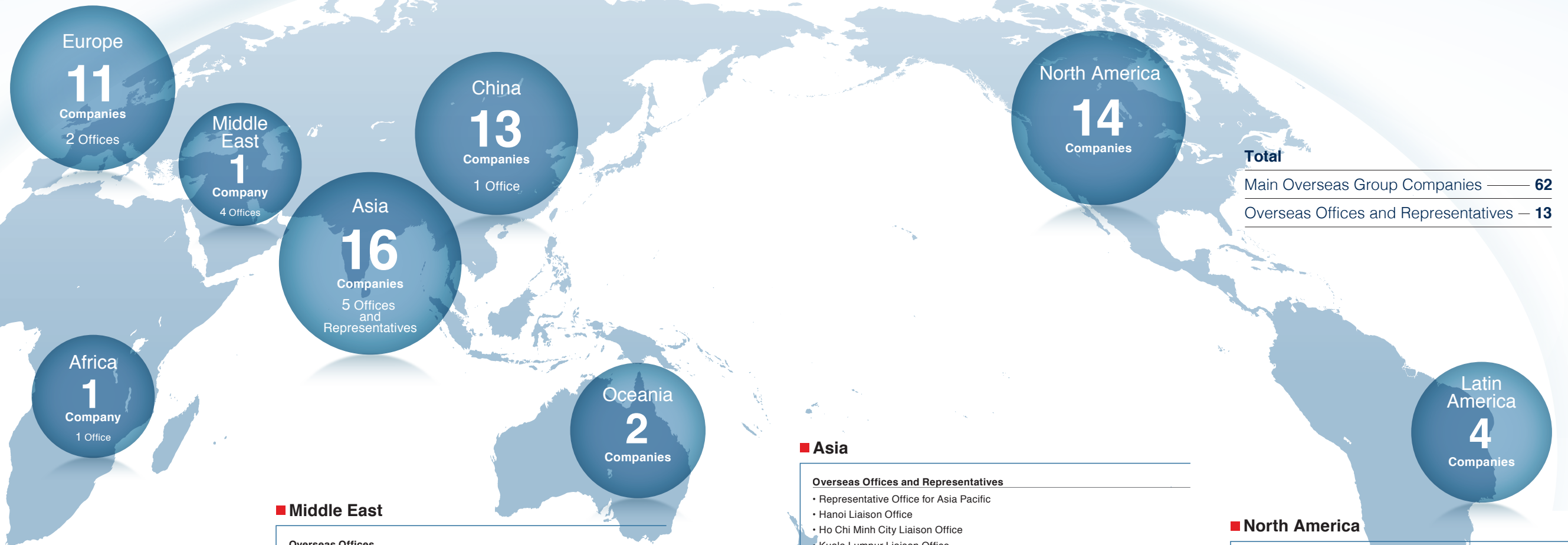
	Operating Company	Sales and After-Sales Service	Design, Manufacture and Construction	Construction, Real Estate and Others
■ Energy & Environment				
Mitsubishi Hitachi Power Systems, Ltd.	●			
Mitsubishi Hitachi Power Systems Precision Casting Co., Ltd.			●	
Mitsubishi Hitachi Power Systems Engineering Co., Ltd.			●	
Mitsubishi Hitachi Power Systems Inspection Technologies, Ltd.			●	
MHPS Control Systems Co., Ltd.			●	
Mitsubishi Hitachi Power Systems Gas Turbine Service Co., Ltd.		●		
Babcock-Hitachi K.K.		●	●	●
Bab-Hitachi Industrial Co.		●	●	
Bab-Hitachi Business Corporation			●	●
Mitsubishi Heavy Industries Marine Machinery & Engine Co., Ltd.	●			
MHI Nuclear Engineering Co. Ltd.		●		
Nuclear Plant Service Engineering Co., Ltd.		●		
Nuclear Power Training Center, Ltd.				●
Seiry Engineering Co., Ltd.			●	
E-Techno Ltd.			●	
Mitsubishi FBR Systems, Inc.			●	
■ Commercial Aviation & Transportation Systems				
Mitsubishi Aircraft Corporation	●			
MHI Aero Engine Service Co., Ltd.		●		
MHI Aerospace Production, Ltd.			●	
MHI Aerospace Logitem Co., Ltd.			●	
MHI Shimonoseki Engineering Co., Ltd.		●		
MHI Marine Engineering, Ltd.		●		
■ Integrated Defense & Space Systems				
Churyo Engineering Co., Ltd.			●	
MHI Special Vehicles Parts Supply & Technical Service Co., Ltd.		●		
■ Machinery, Equipment & Infrastructure				
Mitsubishi-Hitachi Metals Machinery, Inc.	●			
Mitsubishi Heavy Industries Compressor Corporation	●			
Mitsubishi Heavy Industries Environmental & Chemical Engineering Co., Ltd.	●			
Mitsubishi Heavy Industries Mechatronics Systems, Ltd.	●			
Mitsubishi Heavy Industries Bridge & Steel Structures Engineering Co., Ltd.	●			
Mitsubishi Heavy Industries Plastic Technology Co., Ltd.	●			
Mitsubishi Heavy Industries Food & Packaging Machinery Co., Ltd.	●			
Mitsubishi Heavy Industries Printing & Packaging Machinery, Ltd.	●			
Mitsubishi Heavy Industries Machinery Technology Corporation	●			
Mitsubishi Heavy Industries Engine Systems Co., Ltd.	●			
Mitsubishi Nichiyu Forklift Co., Ltd.	●			
Mitsubishi Heavy Industries Automotive Thermal Systems Co., Ltd.	●			
MHI Sagami High-tech Ltd.			●	
Toyo Engineering Works, Ltd.			●	
Mitsubishi Heavy Industries Machine Tool Co., Ltd.		●		
Mitsubishi Heavy Industries Transportation Equipment Engineering & Service Co., Ltd.		●		
Mitsubishi Heavy Industries Plant Construction Co., Ltd.			●	
Mitsubishi Heavy Industries Air-Conditioning and Refrigeration Corporation		●		
Mitsubishi Agricultural Machinery Co., Ltd.			●	
Mitsubishi Agricultural Machinery Sales Co., Ltd.		●		
Ryono Asset Management Co., Ltd.				●
Ryono Factory Co., Ltd.			●	
Ryoju Cold Chain Co., Ltd.		●		
Lumittec Inc.			●	
■ Others				
Ryoju Estate Co., Ltd.				●
Nagoya Ryoju Estate Co., Ltd.				●
Kinki Ryoju Estate Co., Ltd.				●
Hiroshima Ryoju Estate Co., Ltd.				●
Nishinon Ryoju Estate Co., Ltd.				●
MHI Finance Co., Ltd.				●
Shunjusha Ltd.				●
Shonan Monorail Co., Ltd.				●
Daiya Building Service Co., Ltd.				●
Tamachi Building Co., Ltd.				●
Nagasaki Diamond Staff Co., Ltd.				●
Ryosei Service Co., Ltd.				●
Ryoin Co., Ltd.				●

*MHPS = Mitsubishi Hitachi Power Systems, Ltd.

Main
Overseas
Locations

Providing Reliable Technology from Japan to the World through an Established Global Network

MHI promotes its business operations worldwide with approximately 60 main group companies located outside of Japan, including 13 overseas offices. MHI will continue to expand its global business platform with the aim of becoming a company that can provide virtually any kind of service, anywhere in the world.



■ Europe

Overseas Offices

- Moscow Liaison Office
- Kiev Liaison Office

Overseas Network, etc.

- MHI International Investment B.V.
- Mitsubishi Heavy Industries Europe Ltd.

Energy & Environment

- Donges Steeltec GmbH
- Meeraner Dampfkesselbau GmbH
- MH Power Systems Europe Service GmbH
- Mitsubishi Hitachi Power Systems Europe GmbH
- Turboden S.r.l.
- Mitsubishi Power Systems Europe, Ltd.

Machinery, Equipment & Infrastructure

- Mitsubishi Caterpillar Forklift Europe B.V.
- Mitsubishi Turbocharger and Engine Europe B.V.
- Mitsubishi Heavy Industries Air-Conditioning Europe, Ltd.

■ Africa

Overseas Offices

- Johannesburg Office

Energy & Environment

- Mitsubishi Hitachi Power Systems Africa (Pty) Ltd.

■ Middle East

Overseas Offices

- Istanbul Liaison Office
- Basra Liaison Office
- Dubai Office
- Abu Dhabi Office

Energy & Environment

- MHI Power Systems Saudi Arabia, LLC

■ China

Overseas Offices

- Taipei Office

Overseas Network, etc.

- Mitsubishi Heavy Industries (China) Co., Ltd.
- Mitsubishi Heavy Industries (Shanghai) Co., Ltd.

Energy & Environment

- Mitsubishi Heavy Industries BFG Gas Turbine Service (Nanjing) Co., Ltd.
- Mitsubishi Heavy Industries Dongfang Gas Turbine (Guangzhou) Co., Ltd.
- Dalian Hitachi Machinery & Equipment Co., Ltd.

Machinery, Equipment & Infrastructure

- MHI Engine System Hong Kong Ltd.
- MHI Machine Tool Hong Kong Ltd.
- MHI Residential Air-conditioners (Shanghai) Co., Ltd.
- Mitsubishi Heavy Industries (Changshu) Machinery Co., Ltd.
- Mitsubishi Heavy Industries Air-conditioners (Shanghai) Co., Ltd.
- Mitsubishi Heavy Industries Forklift (Dalian) Co., Ltd.
- Mitsubishi Heavy Industries-Haier (Qingdao) Air-Conditioners Co., Ltd.
- Mitsubishi Heavy Industries-Jinling Air-Conditioners Company, Ltd.

■ Asia

Overseas Offices and Representatives

- Representative Office for Asia Pacific
- Hanoi Liaison Office
- Ho Chi Minh City Liaison Office
- Kuala Lumpur Liaison Office
- Jakarta Liaison Office

Overseas Network, etc.

- Mitsubishi Heavy Industries, (Hong Kong) Ltd.
- Mitsubishi Heavy Industries India Private Ltd.
- MHI Korea, Ltd.
- Mitsubishi Heavy Industries Philippines, Inc.
- MHI Capital Asia Pacific Pte. Ltd.
- Mitsubishi Heavy Industries (Thailand) Ltd.

Energy & Environment

- Babcock-Hitachi (Philippines) Inc.
- Mitsubishi Heavy Industries Engineering & Services Private Ltd.
- MHI Power Systems Project (Thailand) Co., Ltd.

Machinery, Equipment & Infrastructure

- Concast (India) Ltd.
- Mitsubishi Heavy Industries India Precision Tools, Ltd.
- Mitsubishi Caterpillar Forklift Asia Pte Ltd.
- Mitsubishi Heavy Industries Engine System Asia Pte. Ltd.
- MHI Automotive Climate Control (Thailand) Co., Ltd.
- Mitsubishi Heavy Industries - Mahajak Air Conditioners Co., Ltd.
- Mitsubishi Turbocharger Asia Co., Ltd.

■ Oceania

Overseas Network, etc.

- Mitsubishi Heavy Industries Australia, Pty. Ltd.

Machinery, Equipment & Infrastructure

- Mitsubishi Heavy Industries Air-conditioners Australia, Pty. Ltd.

■ North America

Overseas Network, etc.

- Mitsubishi Heavy Industries America, Inc.
- MHI Capital America, Inc.

Energy & Environment

- Mitsubishi Hitachi Power Systems Canada, Ltd.
- Mechanical Dynamics & Analysis, Ltd.
- MHI Nuclear North America, Inc.
- MHI Wind Power Americas, Inc.
- Mitsubishi Hitachi Power Systems America - Energy and Environment, Ltd.
- Mitsubishi Hitachi Power Systems Americas, Inc.
- PW Power Systems, Inc.

Commercial Aviation & Transportation Systems

- MHI Canada Aerospace Inc.

Machinery, Equipment & Infrastructure

- Federal Broach Holdings, LLC
- Mitsubishi Caterpillar Forklift America Inc.
- Mitsubishi Engine North America, Inc.
- Mitsubishi Heavy Industries Climate Control, Inc.

■ Latin America

Overseas Network, etc.

- Mitsubishi Heavy Industries de Mexico, S.A. de C.V.
- Mitsubishi Industrias Pesadas do Brasil Ltda.
- MHI Business Solution de Mexico, S.A. de C.V.

Energy & Environment

- CBC Industrias Pesadas S.A.



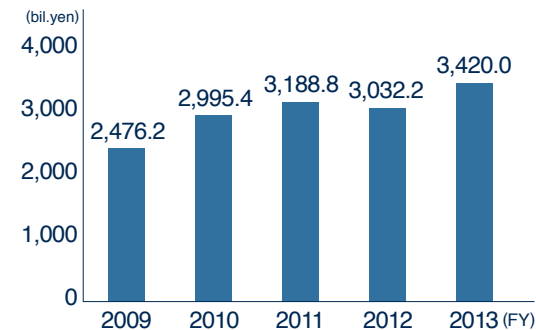
Outline
of
the Company

Capitalizing on Synergetic Advantages Afforded by the
Four Domain Axes to Meet Higher Level Needs of Society

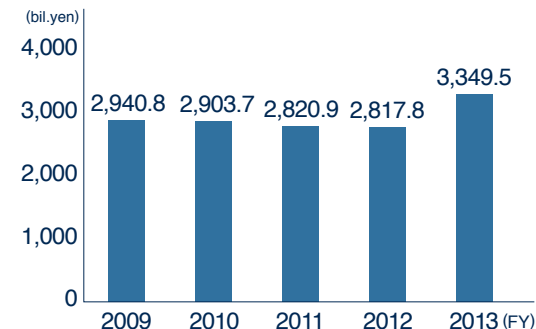
Company Name	Mitsubishi Heavy Industries, Ltd.
Foundation	July 7, 1884
Establishment	January 11, 1950 <small>(Date of foundation of Nakanihon Heavy Industries, Ltd. MHI legally took over this company.)</small>
Capital	265.6 bil. yen <small>(As of March 31, 2014)</small>
Orders Received	3,420.0 bil. yen <small>(Consolidated basis, April 1, 2013 - March 31, 2014)</small>
Net Sales	3,349.5 bil. yen <small>(Consolidated basis, April 1, 2013 - March 31, 2014)</small>
Business Domains	4
Research & Development Centers	6
Works & Plants	10
Domestic Offices	8
Overseas Offices	13
Employees	80,583 <small>(Consolidated basis, as of March 31, 2014)</small> 22,147 <small>(Non-consolidated basis, as of March 31, 2014)</small>

Consolidated Results

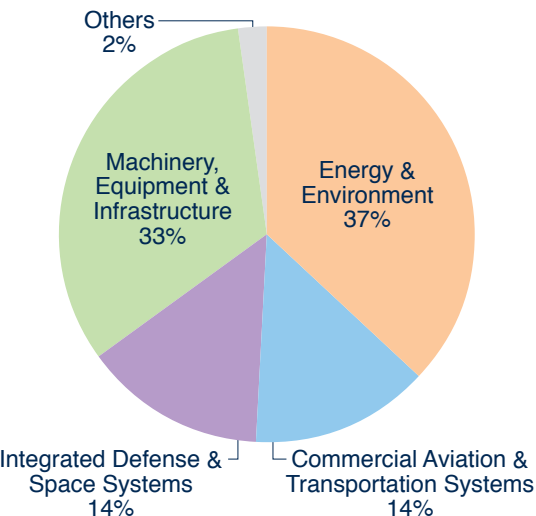
Orders received



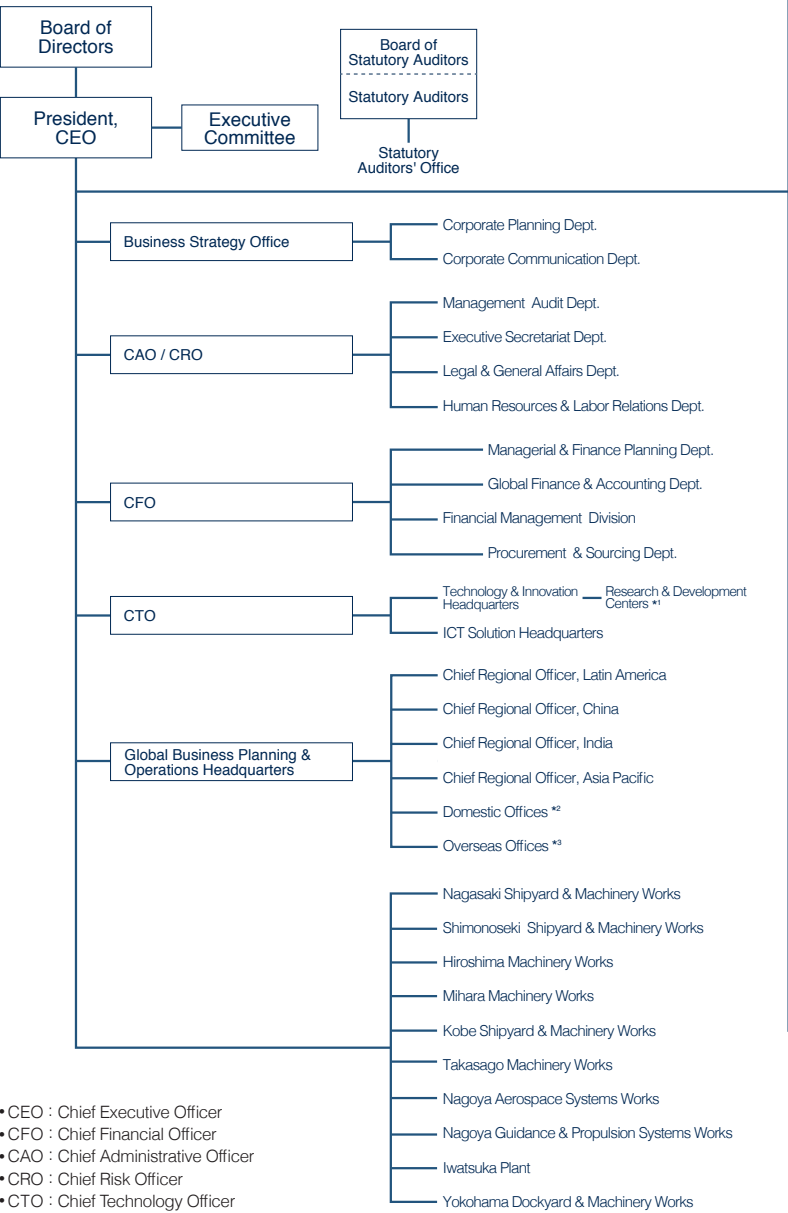
Net sales



Sales ratio by domain (April 1, 2013 - March 31, 2014)



Organization Chart



- CEO : Chief Executive Officer
- CFO : Chief Financial Officer
- CAO : Chief Administrative Officer
- CRO : Chief Risk Officer
- CTO : Chief Technology Officer

*1 Research & Development Centers	*2 Domestic Offices	*3 Overseas Offices
Advanced Technology Research Center Nagasaki Research & Development Center Takasago Research & Development Center Hiroshima Research & Development Center Yokohama Research & Development Center Nagoya Research & Development Center	Kansai Office Chubu Office Kyushu Office Hokkaido Office Chugoku Office Tohoku Office Hokuriku Office Shikoku Office	Representative Office for Asia Pacific Moscow Liaison Office Kiev Liaison Office Istanbul Liaison Office Basra Liaison Office Dubai Office Abu Dhabi Office Johannesburg Office Taipei Office Hanoi Liaison Office Ho Chi Minh City Liaison Office Kuala Lumpur Liaison Office Jakarta Liaison Office
Overseas Network	Mitsubishi Heavy Industries (China) Co., Ltd. Mitsubishi Heavy Industries (Shanghai) Co., Ltd. Mitsubishi Heavy Industries (Hong Kong) Ltd. MHI Korea, Ltd.	Mitsubishi Heavy Industries India Private Ltd. Mitsubishi Heavy Industries Philippines, Inc. Mitsubishi Heavy Industries (Thailand) Ltd. Mitsubishi Heavy Industries Australia, Pty. Ltd.

