



Mahr Metering Systems

MarMax Mixing and Dispensing Machines for flexible packaging



User friendly operation

by the use of visualization user interface

High Metering accuracy

by the use of gear metering pumps

Modular and flexible

by the use of custom-made machine concepts

Customized system solutions

Features and Facts

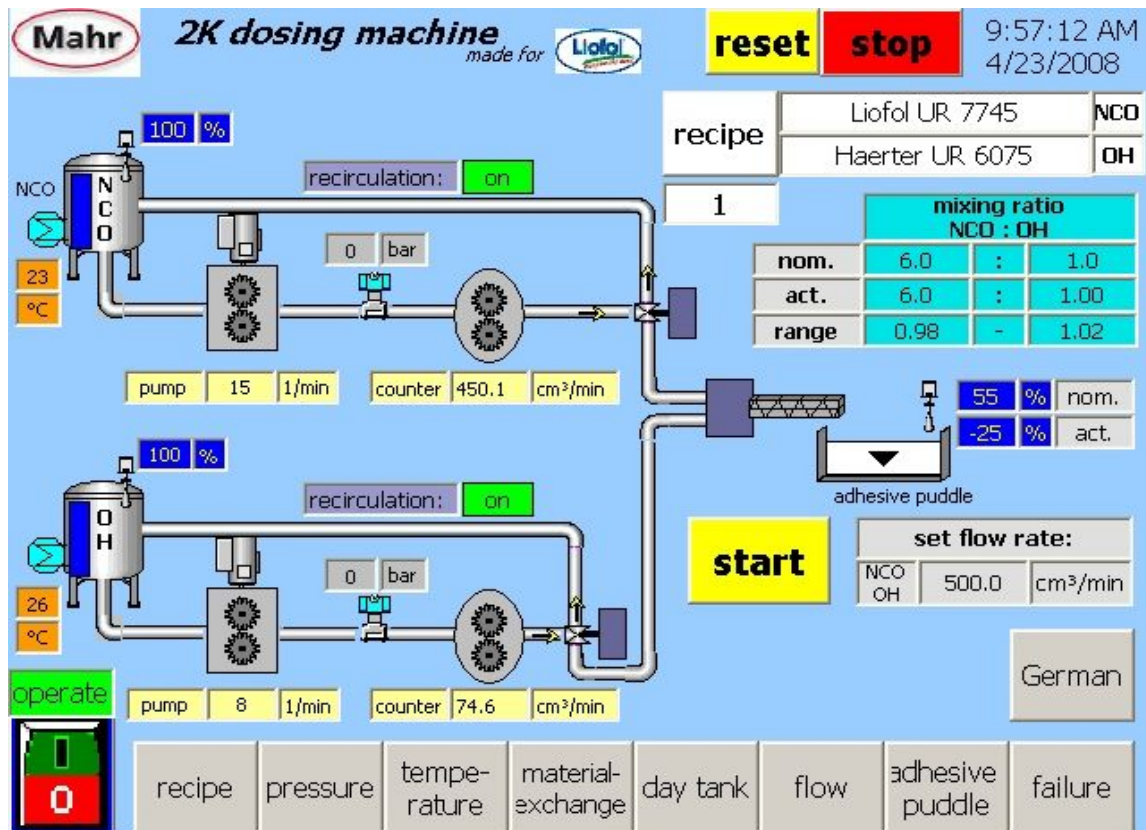
- Solventless (LF) and solvent based (LH) machines
- Solutions for cold and warm adhesive systems
- Machines for single and multi component adhesive systems
- Mobile machines and steady state systems
- Selectable mixing ratios between 1:1 and 15:1
- Arbitrary flow rates from 0,1 g/min to 15.000 g/min
- Metering pumps with and without magnetic coupling
- Flow control with minimum pressure drop and high accuracy
- Temperature and level control
- Recirculation-, purge- and sleepmode
- Data exchange with host computer
- Remote diagnosis and maintenance
- Service-Hotline



picture 1: Mixing head



picture 2: Drum pump system for one or two components



picture 3: Visualized user interface

Advantages

- high mixing and metering accuracy by the use of high precision metering pumps
- user friendly operation through visualized machine interface
- premium components
- application dedicated meter-, mix- dispense technology
- no additional cost due to application tailored machine configuration
- cost efficiency handling of raw materials
- fully automatic operation due to level control in adhesive puddle



picture 4: 2-component Meter Mix Machines, connections for compressed air and/or nitrogen



MarMax Mixing and Dosing Machines for flexible packaging

▪ Standard / ° Optional		Mobile machines				Steady state systems			
Machine type		Standard line		High end line		Standard / Premium			
Features		MarMax 1K	MarMax 2K	MarMax 2K	MarMax 3K	1 K	2 K	3 K	n-K
Adhesive system	Solventless [LF]	▪	▪	▪		▪	▪		▪
	Solvent-based [LH]				▪			▪	▪
Arbitrary flow rate from ÷ to further on request		0.1 ÷ 15.000 gram / min							
Selectable mixing ratios from ÷ to others on request		%	1:1 ÷ 15:1			%	1:1 ÷ 15:1		
Viscosity range [mPas]		1 ÷ 3.000.000	1 ÷ 85.000	1 ÷ 3.000.000	1 ÷ 85.000	1 ÷ 3.000.000	1 ÷ 85.000		
Heating features	Unheated	▪	▪	▪	▪	▪	▪	▪	▪
	Partially heated	°	°	°	°	°	°	°	°
	Fully heated	°	°	°	°	°	°	°	°
Metering accuracy (accuracy of final mixing proportion) higher accuracy on request		≤ ± 2%		≤ ± 1%		≤ ± 1%			
Recirculation of adhesive media		°	°	▪	▪	°	°	°	°
Conveying element	Metering Pump	▪	▪	°	°	▪	▪	°	°
	Magnetic coupled metering pump		°	▪	▪	°	°	▪	°
	others	°	°	°	°	°	°	°	°
Level sensor at adhesive puddle		°	°	▪	▪	°	°	°	°
High precision closed-loop control through servomotors		°	°	▪	▪	°	°	°	°
Mix head without any tools dismountable (pic. 1)		▪	▪	▪	▪	▪	▪	▪	▪
Vessel connection for: (pic. 4)	Compressed air	°	°	▪	▪	°	°	°	°
	Nitrogen	°	°	▪	▪	°	°	°	°
	Other media	°	°	°	°	°	°	°	°
Production process:	automatic	°	°	▪	▪	°	▪	▪	▪
	manually	▪	▪	°	°	▪	°	°	°
Touch Panel operation (pic. 3)		▪7½"	▪7½"	▪10"	▪10"	°7½" °10"	▪10"	°10"	

Contact:

Mahr Metering Systems GmbH - Carl-Mahr-Strasse 1 - 37073 Goettingen - Germany
 Tel. 0551/7073-255
 Fax 0551/7073-417
 E-Mail: MahrMeteringSystems@mahr.de

www.mahr.de