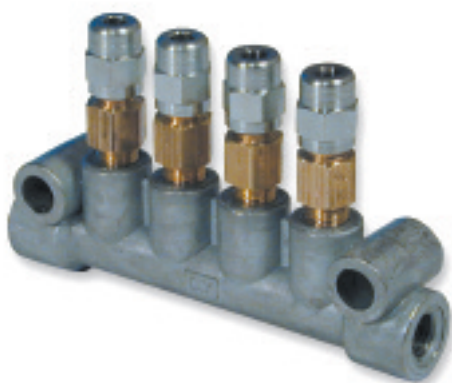


FLOW UNITS



Single Line Metering System

Interlube Flow Units are non-adjustable capillary fittings installed at each lubrication point to regulate oil delivery and are suitable for use with hand operated or automatic cyclic pumps.

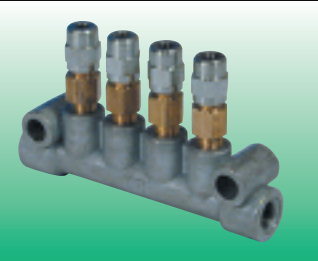
Flow is in one direction only, indicated by an arrow. The flow value number is also stamped on the body; each increase in number doubles the oil delivery.

Flow Units are supplied complete with capnut and cone, ready to assemble.

JUNCTION IM Screwed into tapped holes or junctions when feeding bearings through tail pipes.	Flow Value	Part No.	TEE IH Used where connection is made with the main supply through a junction header.	Flow Value	Part No.
	20 21 22 23 24 25 26 27 28 29	IM20 IM21 IM22 IM23 IM24 IM25 IM26 IM27 IM28 IM29		20 21 22 23 24 25 26 27 28 29	IH20 IH21 IH22 IH23 IH24 IH25 IH26 IH27 IH28 IH29
	Flow Value	Part No.		Flow Value	Part No.
STRAIGHT IW For direct connection into bearings. Mounted directly at the bearing and used at the end of pressure lines.	Flow Value	Part No.	STRAIGHT IB Mounted directly at the bearing and used at the end of pressure lines.	Flow Value	Part No.
	20 21 22 23 24 25 26 27 28 29	IW20 IW21 IW22 IW23 IW24 IW25 IW26 IW27 IW28 IW29		20 21 22 23 24 25 26 27 28 29	IB20 IB21 IB22 IB23 IB24 IB25 IB26 IB27 IB28 IB29
	Flow Value	Part No.		Flow Value	Part No.



Positive Displacement Units & Flow Units



Part of the



UK Headquarters: Interlube Systems Ltd: St Modwen Road, Parkway Industrial Estate, Plymouth, Devon, England, PL6 8LH. Tel: +44 (0)1752 676000 Fax: +44 (0)1752 676001 Email: info@interlubesystems.com

USA Division: Interlube Systems Inc: 4696 Wadsworth Road, Dayton, Ohio 45414, USA Tel: (937) 2764507 Fax: (937) 2764518 Email: nmackay@interlubeusa.com

Interlube Systems (Malaysia) SDN: 30, Jalan Appollo U5/189, Bandar Pinggiran Subang Sesyen, 40150 Shah Alam, Selangor, Malaysia. Tel: (603) 7845 5377 Fax: (603) 7845 5977 Email: acllube@streamyx.com

Interlube Systems Ltd - maximising industrial performance world-wide...

POSITIVE DISPLACEMENT UNITS



Positive Displacement Units (PDU's) deliver a precise volume of lubricant at the beginning of each pump cycle. Each unit in the range is stamped with a reference number denoting the discharge volume. The total oil delivery to a system can be further controlled by the pump lubrication frequency. The system operates intermittently, allowing PDU's to recharge for the next cycle, and is generally total loss.

Operating performance is unaffected by back pressure or air entrapment.

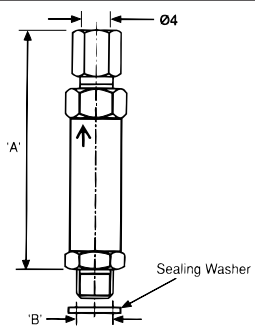
A PDU system can be monitored for correct pressure by installing a pressure switch at the pump or, in large systems, at the end of the line. Functional pressure is measured through the system main line and terminates at the PDU's. It is possible to monitor the entire system pipework through PDU's directly mounted at the bearing entry point.

Manifold or bearing mounted units are available with conventional compression fittings or **PUSH-IN connectors** which considerably reduce installation time.

POSITIVE DISPLACEMENT UNITS - Oil and Fluid Grease

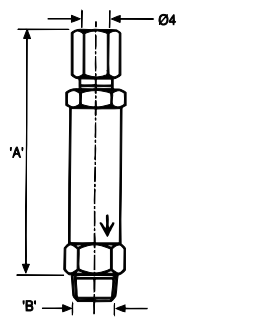
Manifold Mounted			
Part No.	Discharge Volume (cc)	Thread 'B'	Dim 'A' (mm)
PD3403	0.03	M8x1	49.5
PD3406	0.06		49.5
PD3410	0.10		49.5
PD3416	0.16		49.5
PD3425	0.25	M8x1	57.5
PD3440	0.40		57.5
PD3460	0.60		57.5

Supplied complete with nut, cone and sealing washer

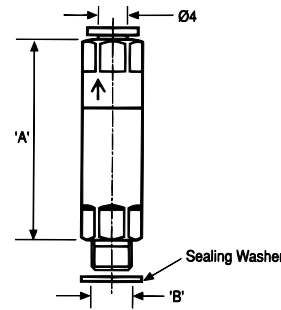


Bearing Mounted			
Part No.	Discharge Volume (cc)	Thread 'B'	Dim 'A' (mm)
PD3103	0.03	1/8in BSPT	51.5
PD3106	0.06		51.5
PD3110	0.10		51.5
PD3116	0.16		51.5
PD3125	0.25	1/8in BSPT	57.5
PD3140	0.40		57.5
PD3160	0.60		57.5

Supplied complete with nut and cone



POSITIVE DISPLACEMENT UNITS - Push in Type

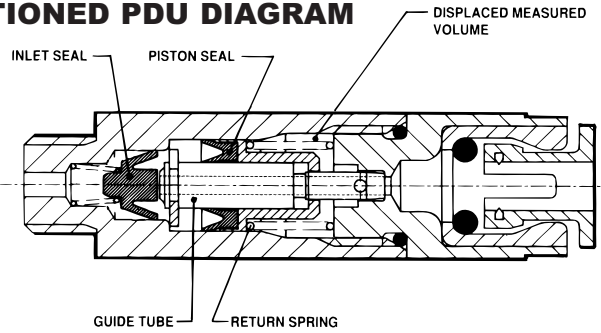
Manifold Mounted				Suitable for use with 4mm dia nylon, steel or brass tube	
Part No.	Discharge Volume (cc)	Thread 'B'	Dim 'A' (mm)	Supplied complete with sealing washer	
PD2403	0.03	M8x1	40		
PD2406	0.06		40		
PD2410	0.10		40		
PD2416	0.16		40		
<p><b>Note:</b> Manifold mounted PDU's with outputs from 0.25 to 0.60cc are available to special order and bearing mounted push-in units can also be supplied.</p> <p>Please contact our sales Department for further information.</p>					

SPECIFICATION

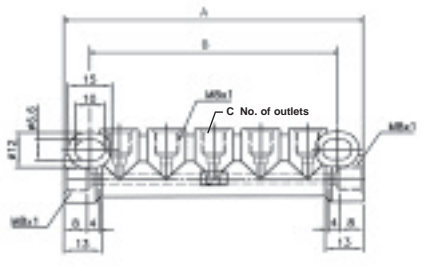
**Operating Pressure**  
Min 10 Bar  
Max 30 Bar

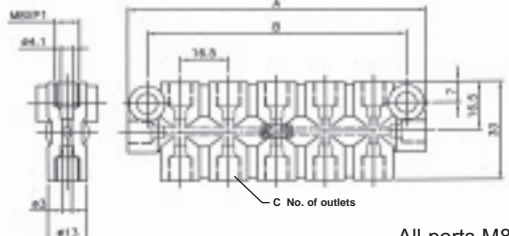
**Recommended Lubricants**  
Oil 10 - 1800 cSt at ambient (20°C)  
Fluid Grease NLGI 000

SECTIONED PDU DIAGRAM



MANIFOLDS FOR POSITIVE DISPLACEMENT UNITS

4 to 12 Way Single Manifolds					
Type	Part No	'A'	'B'	'C'	
4-way	MMS4	50.0	35.0	2	
5-way	MMS5	65.0	51.0	3	
6-way	MMS6	86.0	68.0	4	
7-way	MMS7	98.0	80.0	5	
8-way	MMS8	115.0	94.0	6	
10-way	MMS10	137.0	123.0	8	
12-way	MMS12	166.0	151.0	10	

6 to 14 Way Double Manifolds					
Type	Part No	'A'	'B'	'C'	
6-way	MMD6	48.0	35.0	4	
8-way	MMD8	65.0	51.0	6	
10-way	MMD10	83.0	70.0	8	
12-way	MMD12	97.0	83.0	10	
14-way	MMD14	112.0	99.0	12	

All dimensions are in millimetres

TYPICAL INSTALLATION EXAMPLE

