

TwinBox PV-junction box set

Renewable energy | Solar Photovoltaics

EN



TwinBox PV-Junction box set



Junction box with socket
PV-JB/TB-BT4-UR



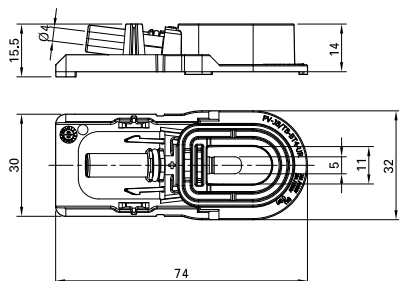
Junction box with plug
PV-JB/TB-ST4-UR

- Designed for fully automated assembly
- High dependability due to perfect matching of components, potting compound, silicone and adhesive foil.
- Compartment for electrical connection between the junction box and panel hermetically sealed with potting compound.
- Compact design due to integration of the MC4 connection technology fitting directly into the junction box.

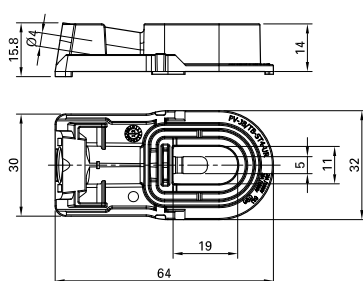
Technical data

Technical data	
Connector system	MC4
Rated voltage	DC 1000 V (IEC) DC 600 V (UL)
Rated current	25 A
Pulse test voltage	12 kV (IEC)
Test voltage for 1000 V	6 kV
Ambient temperature range	-40 °C ... +85 °C (IEC) -40 °C ... +40 °C (UL)
Upper limiting temperature	+105 °C (IEC)
Max. upper limiting temperature (MOT)	80 °C (UL)
Degree of protection (mated)	IP65/IP68 (1 h, 1 m)
Degree of protection (unmated)	IP2X
Safety class	Inside I, outside III
Pollution degree (mated) according to IEC 60664	3 (inside)
Contact material	Copper alloy, tin plated
Insulation material	PA
Locking system connectors	Snap-in
Flame class	UL94-V0
TÜV Rheinland certified	IEC 62790:2020
TÜV Rheinland certificate number	R 60133378
UL certificate according to UL 3730:2014	E335016
Intended for Module type	Thin film, silicon
Poles	1
Diodes	0
Number of bus ribbons	1
Alignment of the bus ribbon of the PV module	Parallel to the junction box
Connection of the bus ribbon of the PV module	Welding (UL, IEC)/Soldering (IEC)
Suitable for automated assembly	Yes

Dimensional drawings



Junction box with socket
PV-JB/TB-BT4-UR



Junction box with plug
PV-JB/TB-ST4-UR

Ordering information

Order No.	Type	Description
32.7242-UR	PV-JB/TB-BT4-UR	Junction box with socket MC4
32.7243-UR	PV-JB/TB-ST4-UR	Junction box with plug MC4

Further information



Tools and accessories

For related Stäubli tools and accessories please consult:

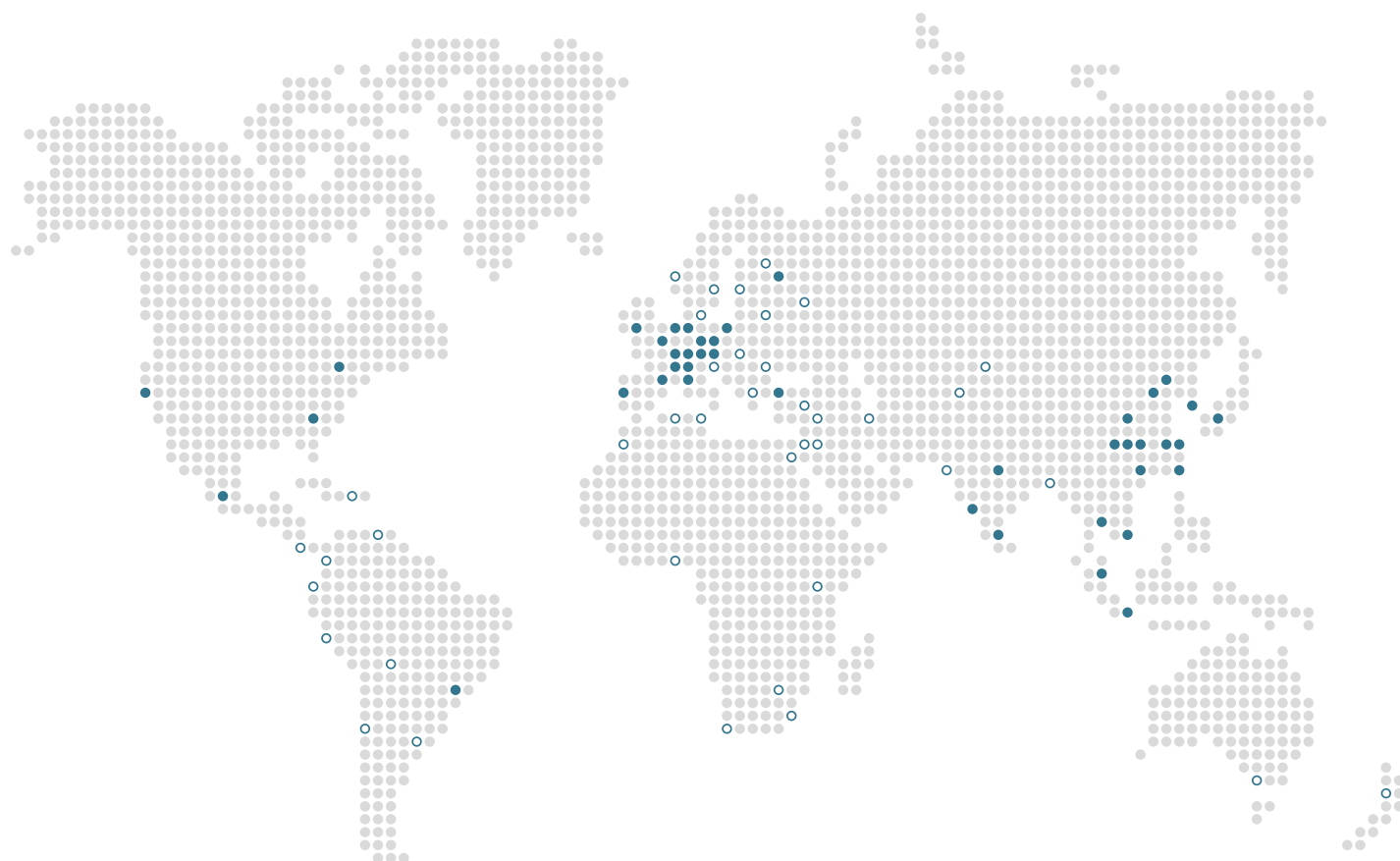
www.staubli.com/re-downloads.html → English → Catalog → **Tools and accessories**



Assembly instructions

For assembly instructions for “TwinBox PV-junction box set” please consult:

www.staubli.com/re-downloads.html → English → Assembly info → **MA263**



● Stäubli Units ○ Representatives/Agents

Global presence of the Stäubli Group

www.staubli.com