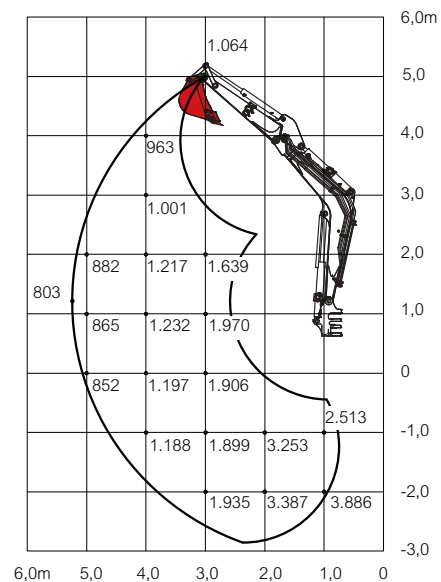


SUNCAR HK TB260E

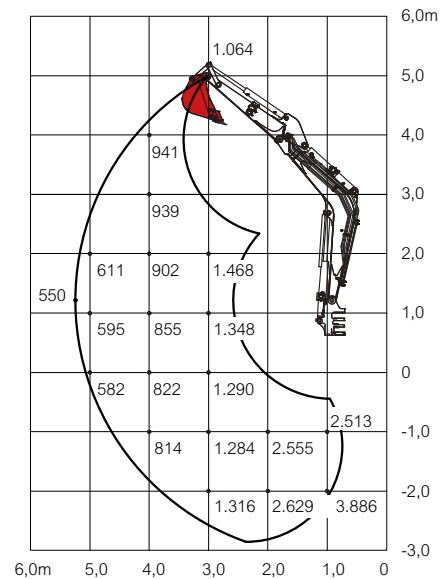
BATTERY DRIVEN EXCAVATOR



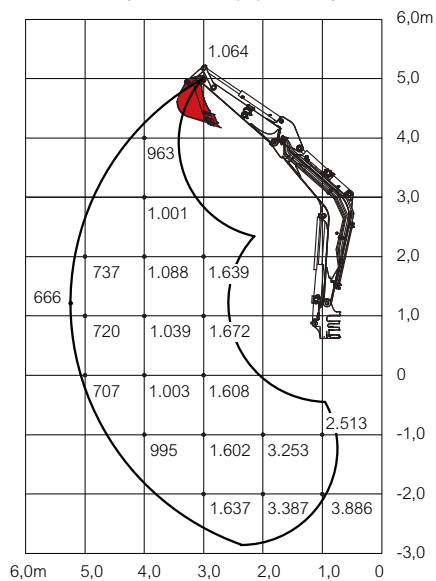
Gross load (Unit kg)



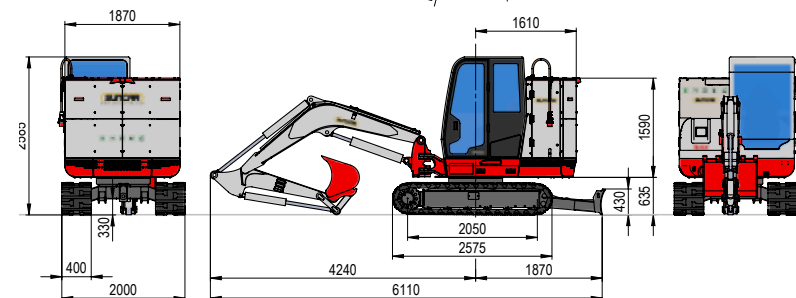
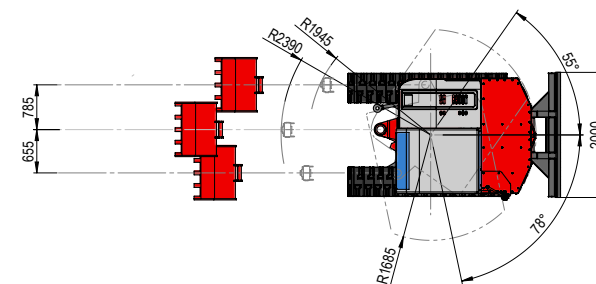
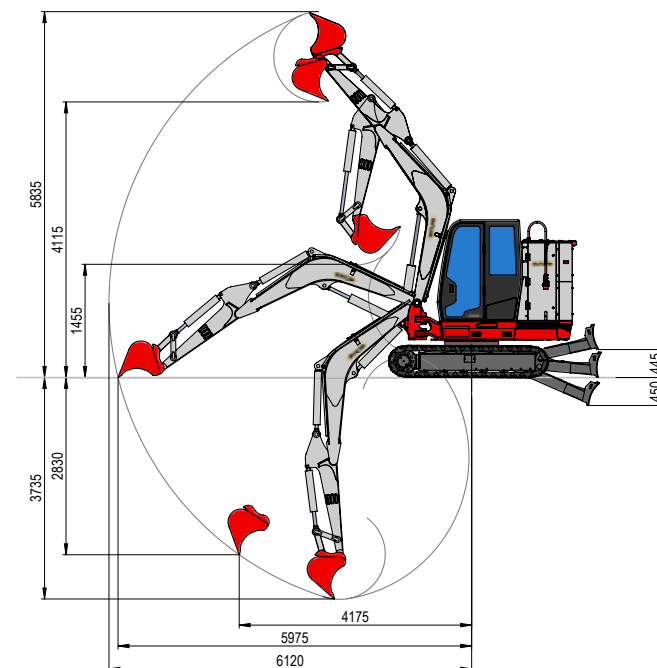
Lateral



Forwards (shield in top position)



Dimensions (Unit mm)



The loads in these charts are within 87% of the hydraulic lifting capacity and within 75% of the tipping load.



The connector can be stowed away easily when in use.



Display of operating data such as motor speed, motor hours, battery state of charge and remaining charging time.



Remote service system to create operation reports, reduce sight checks, do purposeful service and reduce down times.



The TB260E can be recharged using a CEE63 (CEE32 or CEE16 with adapter) socket which can be found on any construction site.



Battery heating and cooling system to extend battery life.



Easy access to the motor, pump and hydraulics.

THE NEW BATTERY DRIVEN EXCAVATOR **TB260E**

The SUNCAR HK is extending its range of compact electric excavators with the 6-ton machine TB260E. The features familiar from its smaller predecessor TB216E, such as performance, reliability, efficiency and user-friendliness, remain unchanged.

ZERO EMISSION ELECTRIC POWER TRAIN

The TB260E is powered by an efficient 75 kW rated synchronous motor. Due to zero-emission operation, the electric excavator is ideal for working in confined spaces or in areas where the use of internal combustion engines is restricted by law.

CHARGING & CABLE RUN

While charging the battery and when in cable operation, the mains connection takes place over a commercial 400 V / CEE63 plug. With appropriate adapters, smaller

sockets can be used. The onboard chargers have a charging power of 44 kW, allowing the excavator to fully charge in 3 hours. The battery runtime of the excavator is 6 hours or more. If the excavator is recharged for one hour during lunch break, the runtime will increase up to 8 hours or more. The additional cable run mode ensures the possibility to work around the clock. In both operating modes, the excavator has access to full power.

HYDRAULIC SYSTEM

With its 4 additional control circuits, the TB260E offers optimum compatibility with a variety of attachments. On the first control circuit, a flow rate of 100 l/min is available. In addition, 3 circuits are proportionally controlled, allowing for precise and efficient operation. The proven powertilt with hydraulic quick hitch completes the range of applications.

MAINTENANCE

Battery and electric motor are maintenance-free and have a long lifespan. Since the usual maintenance on the diesel engine is no longer necessary, service costs are significantly reduced. The hydraulic system is maintained as usual.

SIMPLE HANDLING

The new control display has an intuitive menu navigation, provides plenty of information regarding the state of the machine and allows the user to switch between various functions of the excavator.

**SUNCAR HK - EXPERIENCE AND INNOVATIVE
TECHNOLOGY COMBINED WITH THE KNOW-HOW
AND RELIABILITY OF HUPPENKOTHEN**

THE ADVANTAGES AT A GLANCE



- » No exhaust fumes
- » No need for expensive particle filters



- » No diesel, resulting in significantly lower operational costs
- » Fewer maintenance expenses



- » Less noise and vibrations
- » Pleasant for the public and environment



- » Zero local emissions
- » Fewer damaging green house gases (e.g. CO₂, NO_x)



- » Durable, reliable li-ion battery
- » Charging time around 3 hours
- » 6 working hours in battery mode (8 hours with recharging at noon)

SUNCAR HK AG

From the sun to the construction site. Moving away from fossil fuels towards solar energy and zero emission operation. That is our company's vision and motto.

SUNCAR HK develops, builds and markets battery-powered electric construction machines. The goal is to convert various machines, e.g. excavators, into electric powered machines which have run on diesel up until this point. Diesel fuel is replaced by renewable solar energy.

Dimensions & Weight

Operating weight* (kg)	6.780
Track width (mm)	2.000
Height (mm)	2.560
Length (transporting) (mm)	6.110
Boom swing angle L/R (°)	78 / 55

Electric motor

Type	PM - synchronous axial flux
Rated power (kW)	75,0
Torque max. (Nm)	400
Rated / maximum speed (rpm)	2.200 / 2.400
Cooling system	40% distilled water / 60% glycol
Environmental impact	Zero emission

Battery system

Type	Lithium-Ion, NCA technology
Operating	335 - 425
Heating system	Bi-directional heat pump

Charger	Onboard
Charge power max. (kW)	44,0
Cable operation	Yes
Power connection (A)	CEE63, 3-phase / 1-phase

Hydraulic system

Hydraulic pumps	2x variable + 2x cogwheel
Pump pressure (bar)	2x 240 / 1x 206 / 1x 33
Hydraulic flow (l/min)	2x 58,3 / 1x 43,9 / 1x 10,8
Slew motor	Axial piston rigid
Traction motor	Axial piston variable (2-speed)
Hydraulic tank (l)	49,0 (tank), 90,0 (total)

Auxiliary hydraulics

1. Control circuit hydraulic hammer (l/min)**	102,2
2. Control circuit gripper (l/min)**	43,9
3. Control circuit quick hitch (l/min)	16,2
4. Control circuit power tilt (l/min)	43,9

Undercarriage

Caterpillars	Rubber or steel
Track width (mm)	400
Ground contact length (mm)	2.050
Ground pressure (kg/cm²)	0,36
Dozer blade dimensions (mm)	2.000 x 430

Performance

Travel speed (km/h)	2,8 (1 st gear) / 4,9 (2 nd gear)
Slew speed (rpm)	9,4
Gradeability (degree/%)	30 / 58
Digging force bucket (kN)	43,2
Digging force arm (kN)	27,3

* Machine weight + quick-hitch + powertilt + middle size bucket

** Flow rate adjustable

Headquarters

SUNCAR HK AG
Hinterwiden
9245 Oberbüren | Schweiz
T +41 44 633 79 59
info@suncar-hk.com
www.suncar-hk.com

Research & Development

SUNCAR HK AG
Technoparkstrasse 1
8005 Zürich | Schweiz
T +41 44 633 79 59
info@suncar-hk.com
www.suncar-hk.com