

Machine Model	AFE-3D4	AFE-3D6	AFE-3D6-T	AFE-3D8-T	AFE-3D10	AFE-3D10-T	AFE-3D12-T
Wire Diameter Range (Millimeters)	2mm - 4mm	2mm - 6.4mm	2mm - 6.4mm	2mm - 8mm	*4mm - 10mm	*4mm - 10mm	*4mm - 12mm
Wire Diameter Range (Inches)	0.080" - 0.160"	0.080" - 0.250"	0.080" - 0.250"	0.080" - 0.313"	0.160" - 0.394"	0.160" - 0.394"	0.160" - 0.472"
Max. Wire Tensile At Max. Wire Diameter	700 N/mm <sup>2</sup>	700 N/mm <sup>2</sup>	550 N/mm <sup>2</sup>	550 N/mm <sup>2</sup>	700 N/mm <sup>2</sup>	550 N/mm <sup>2</sup>	550 N/mm <sup>2</sup>
——#—— (kPSI)	100 kPSI	100 kPSI	80 kPSI	80 kPSI	100 kPSI	80 kPSI	80 kPSI

## Performance Specifications

### Feeder Axis #1

Wire Feed Resolution (Millimeters)	+/- 0.006mm	+/- 0.006mm	+/- 0.006mm	+/- 0.006mm	+/- 0.006mm	+/- 0.006mm	+/- 0.006mm
Wire Feed Resolution (Inches)	0.0002"	0.0002"	0.0002"	0.0002"	0.0002"	0.0002"	0.0002"
Max wire feed speed (Meters)	100 m/min	100 m/min	100 m/min	100 m/min	100 m/min	100 m/min	100 m/min
Max wire feed speed (Feet)	328' f/min	328' f/min	328' f/min	328' f/min	328' f/min	328' f/min	328' f/min

### Bender Axis #2

Bender Resolution	0.0005°	0.0005°	0.0005°	0.0005°	0.0005°	0.0005°	0.0005°
Max Bender speed	1600°/sec	1600°/sec	1000°/sec	1000°/sec	1300°/sec	1100°/sec	1100°/sec
Max Bender angle	+/- 200°	+/- 200°	+/- 200°	Unlimited	+/- 200°	Unlimited	Unlimited

### Z-Axis #3

Z-Axis Resolution	0.0004°	0.0004°	0.0004°	0.0004°	0.0004°	0.0004°	0.0004°
Max Z-Axis speed	500°/sec	500°/sec	500°/sec	500°/sec	500°/sec	500°/sec	500°/sec
Max Z-Axis rotation	+/- 180°	+/- 180°	+/- 180°	+/- 180°	+/- 180°	+/- 180°	+/- 180°

### Turret Axis #4

Turret Axis ToolChange time	N/A	N/A	400 mSec	400 mSec	N/A	400 mSec	400 mSec
-----------------------------	-----	-----	----------	----------	-----	----------	----------

### Set-Up Time

Same Wire Diameter	1 minute	1 minute	1 minute	1 minute	1 minute	1 minute	1 minute
Change feeder rollers & Bending tools	15 minutes	15 minutes	15 minutes	15 minutes	15 minutes	15 minutes	15 minutes

### Power Consumption, Electrical & Air Requirements

Average Power Consumption (KW/h)**	1.6	1.9	2.0	2.0	2.2	2.5	2.5
Electrical requirement	50/60 Hz 400V or 460V, 3 phase - all models***						
Installed Power	37KVA	41KVA	43KVA	45KVA	48KVA	56KVA	56KVA
Air requirements	100 PSI @ 2 SCFM - all models						

### Dimensions & Weight (Machine weight only / not for shipping)

Width, Depth & Height (meters)	2.59 meters x 2.08 meters x 2.13 meters						
——#—— (inches)	102 inches / 82 inches / 84 inches						
Gross weight (Kg)	4085 Kg	4085 Kg	4200Kg	4220 Kg	4130 Kg	4310 Kg	4310 Kg
Gross weight (Lbs)	9000 Lbs	9000 Lbs	9250 Lbs	9300 Lbs	9100 Lbs	9500 Lbs	9500 Lbs

\* Machines can form wire down to 2mm with additional tooling  
 \*\* Power Consumption Data is measured on average production.  
 \*\*\* Specify on Order.

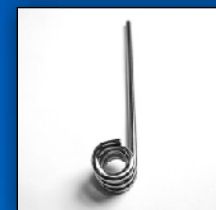
Automated Industrial Machinery, Inc. ©2007  
 The Manufacturer Reserves the right to alter any data and/or photos provided in this brochure without notice.

Call Us for a FREE DVD video, brochures, samples and production rates along with a complete statistical analysis of your production.

Call us for free with Skype  
 SKYPE id: aimincusa or aimeuropesa

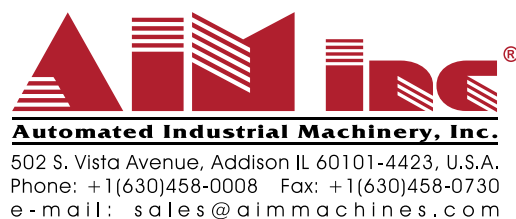
AFE-3D4  
 AFE-3D6  
 AFE-3D6-T  
 AFE-3D8-T  
 AFE-3D10  
 AFE-3D10-T  
 AFE-3D12-T

ACCUFORM E-SERIES  
 VALUE IN CNC WIRE BENDING



FORMING OUR FUTURE WITH YOURS

WWW.AIMMACHINES.COM



AIM in Europe  
 68th Km N. Rd Athens - Lamia, Paleohori  
 P.O. Box 36, 32 009, GREECE  
 Phone: +30 226 205 8900 Fax: +30 22620 59231  
 e-mail: sales@aimeuropesa.com  
 www.aimeuropesa.com



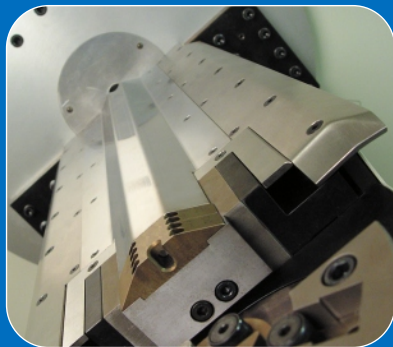
Automated Industrial Machinery, Inc.

# ACCIFORM E-SERIES

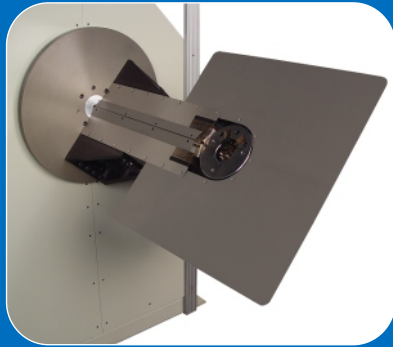
- AFE-3D4
- AFE-3D6
- AFE-3D6-T
- AFE-3D8-T
- AFE-3D10
- AFE-3D10-T
- AFE-3D12-T

The E-Series machine offers functionality, ease of use, and a great value unmatched in the industry.

### Streamlined Design



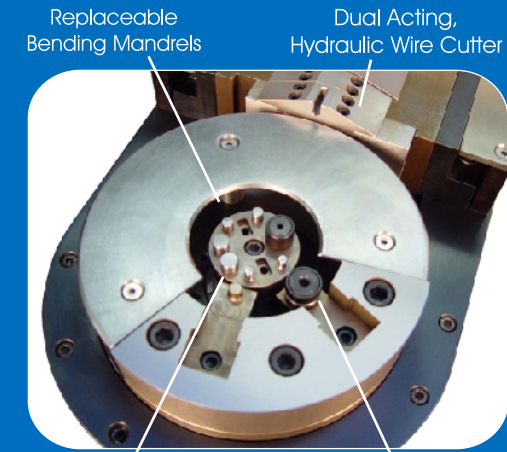
### Optional Part Support Table



### Safety Barrier Included

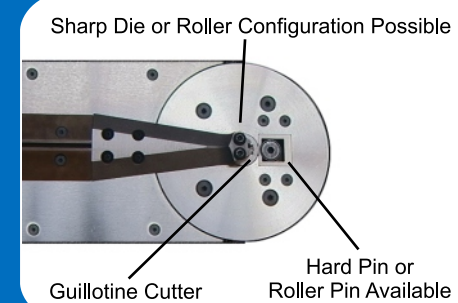


### TURRET HEAD Indexing Tool Changer



Turret head machines offer two programmable bending pins. The **Hard Bending Pin** is used to form intricate bends and long running jobs, where tool wear may become an issue. The **Roller Pin** is used to produce arcs that need to be generated, with minimal marks on the wire. The tool cluster is the "heart" of the bender containing round pins, a roller and sharp bend dies. This variety allows the use of one tool set to accomplish many styles of bends; including a "press brake" style bend, when the radii of the bends are significantly less than the wire diameter. When the bending pins and tool cluster are coupled together they provide the user with up to **8 tooling combinations**. The hydraulic cutter (dual acting) produces burr free square cuts and delivers a "zero length" cutoff.

### Non-TURRET Configuration

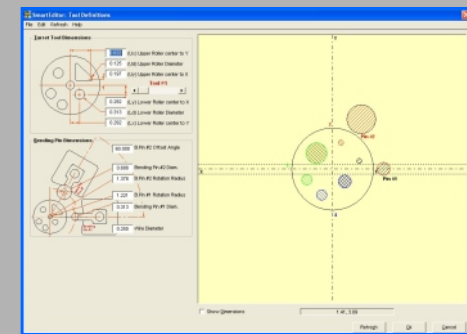


The Non-Turret configuration is the Original Bending Head and has been tried and tested in the field for more than a decade. Although it lacks the flexibility of the Turret Head it gains an advantage of cutting and forming in the same area without indexing the tools. This characteristic reflects less time to make a part, leading to a higher production rate. The cutting unit for this head is also powered by a robust hydraulic unit.

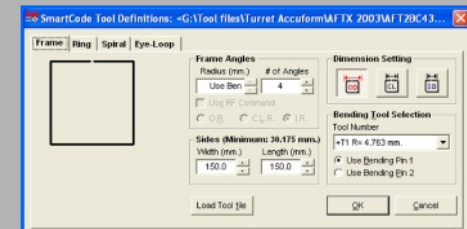
Dual Size Straightener Rollers for Wide Range of Wire Diameters

### E-Series Package Options

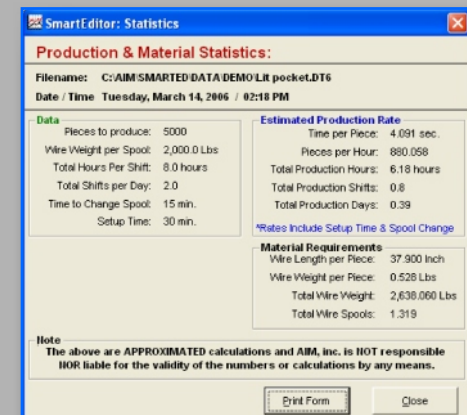
Standard	Option 1	Option 2
AFE Model with +/- 180 degree Z-Axis rotation	SmartEditor® DXF/XYZ Import	Same as Option 2 including:
Software Upgrades for the Warranty of the machine (1 year)	SmartEditor® Animation Simulator	Slip Ring for infinite rotation on the Z-Axis
	Free Upgrades for the LIFE of the machine (1st owner)	One seat for the Office Version of SmartEditor®
<b>Lowest cost</b>	<b>Best value at low cost</b>	<b>Most Flexibility at low cost</b>



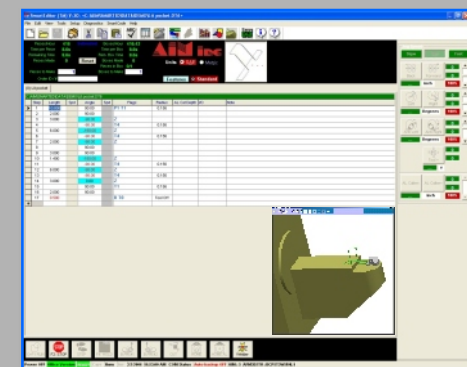
Graphic Representation of Installed Tools on Machine



SmartCode for Automatic Programming of frames, eye loops, rings & spirals



Instant Production Estimates and Material Consumption



Simple Programming Interface. SmartEditor® helps figure out machine movements. User only needs to add feed length, bend angle, radius size & tool configuration

