

Machine Model	AFE-2D4	AFE-2D6	AFE-2D6T	AFE-2D8-T	AFE-2D10	AFE-2D10-T	AFE-2D12-T
Wire Diameter Range (Millimeters)	2mm - 4mm	2mm - 6.4mm	2mm - 6.4mm	2mm - 8mm	*4mm - 10mm	*4mm - 10mm	*4mm - 12mm
Wire Diameter Range (Inches)	0.080" - 0.160"	0.080" - 0.250"	0.080" - 0.250"	0.080" - 0.313"	0.160" - 0.394"	0.160" - 0.394"	0.160" - 0.472"
Max. Wire Tensile At Max. Wire Diameter	700 N/mm ²	700 N/mm ²	550 N/mm ²	550 N/mm ²	700 N/mm ²	550 N/mm ²	550 N/mm ²
—— (kPSI)	100 kPSI	100 kPSI	80 kPSI	80 kPSI	100 kPSI	80 kPSI	80 kPSI

Performance Specifications

Feeder Axis #1

Wire Feed Resolution (Millimeters)	+/- 0.006mm	+/- 0.006mm	+/- 0.006mm	+/- 0.006mm	+/- 0.006mm	+/- 0.006mm	+/- 0.006mm
Wire Feed Resolution (Inches)	0.0002"	0.0002"	0.0002"	0.0002"	0.0002"	0.0002"	0.0002"
Max wire feed speed (Meters)	100 m/min	100 m/min	100 m/min	100 m/min	100 m/min	100 m/min	100 m/min
Max wire feed speed (Feet)	328' f/min	328' f/min	328' f/min	328' f/min	328' f/min	328' f/min	328' f/min

Bender Axis #2

Bender Resolution	0.0005°	0.0005°	0.0005°	0.0005°	0.0005°	0.0005°	0.0005°
Max Bender speed	1600°/sec	1600°/sec	1400°/sec	1100°/sec	1300°/sec	1100°/sec	1100°/sec
Max Bender angle	+/- 200°	+/- 200°	Unlimited	Unlimited	+/- 200°	Unlimited	Unlimited

Turret Axis #4

Turret Axis ToolChange time	N/A	N/A	400 mSec	400 mSec	N/A	400 mSec	400 mSec
-----------------------------	-----	-----	----------	----------	-----	----------	----------

Set-Up Time

Same Wire Diameter	1 minute	1 minute	1 minute	1 minute	1 minute	1 minute	1 minute
Change feeder rollers & Bending tools	15 minutes	15 minutes	15 minutes	15 minutes	15 minutes	15 minutes	15 minutes

Power Consumption, Electrical & Air Requirements

Average Power Consumption (KW/h)**	1.6	1.9	2.0	2.0	2.2	2.5	2.5
Electrical requirement	50/60 Hz 400V or 460V, 3 phase - all models***						
Installed Power	34KVA	37KVA	39KVA	40KVA	45KVA	48KVA	48KVA
Air requirements	100 PSI @ 2 SCFM - all models						

Dimensions & Weight (Machine weight only / not for shipping)

Width, Depth & Height (meters)	2m x 1.5m x 2.13m						
—— (inches)	82" x 60" x 84"						
Gross weight (Kg)	1860 Kg	1930 Kg	2020 Kg	2040 Kg	2040 Kg	2130 Kg	2130 Kg
Gross weight (Lbs)	4100 Lbs	4250 Lbs	4450 Lbs	4500 Lbs	4500 Lbs	4700 Lbs	4700 Lbs

* Machines can form wire down to 2mm with additional tooling
 ** Power Consumption Data is measured on average production.
 *** Specify on Order.

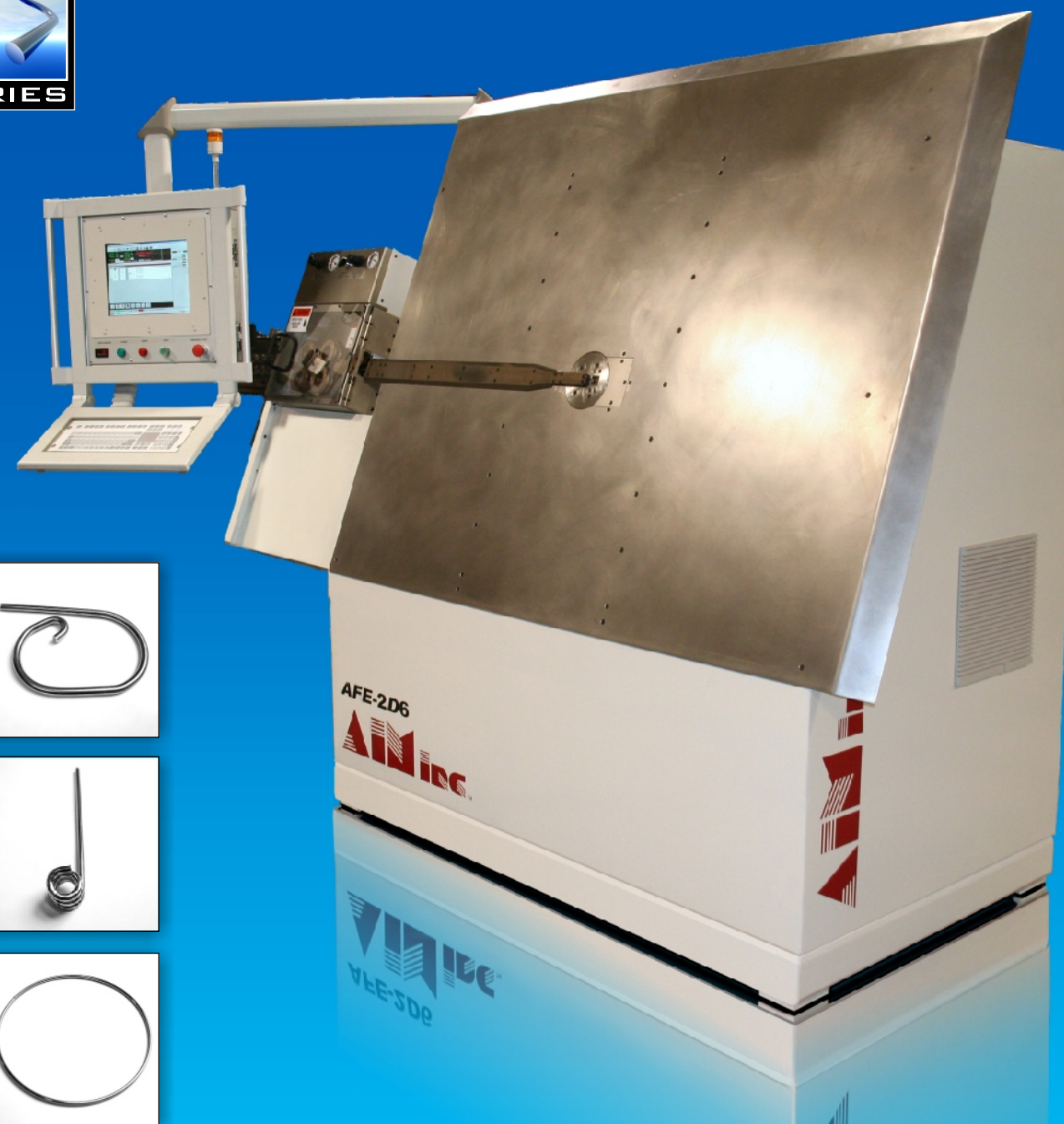
Automated Industrial Machinery, Inc. ©2007
 The Manufacturer Reserves the right to alter any data and/or photos provided in this brochure without notice.

Call Us for a FREE DVD video, brochures, samples and production rates along with a complete statistical analysis of your production.

Call us for free with Skype
 SKYPE id: aimincusa or aimeuropesa

AFE-2D4
 AFE-2D6
 AFE-2D6-T
 AFE-2D8-T
 AFE-2D10
 AFE-2D10-T
 AFE-2D12-T

ACCIFORM E-SERIES
 VALUE IN CNC WIRE BENDING



FORMING OUR FUTURE WITH YOURS

WWW.AIMMACHINES.COM

AIM inc[®]
 Automated Industrial Machinery, Inc.
 502 S. Vista Avenue, Addison IL 60101-4423, U.S.A.
 Phone: +1(630)458-0008 Fax: +1(630)458-0730
 e-mail: sales@aimmachines.com

AIM in Europe
 68th Km N. Rd Athens - Lamia, Paleohori
 P. O. Box 36, 32 009, GREECE
 Phone: +30 226 205 8900 Fax: +30 22620 59231
 e-mail: sales@aimeuropesa.com
 www.aimeuropesa.com



Automated Industrial Machinery, Inc.

ACCUFORM

FEATURES & BENEFITS

- Concurrent Operations: Dual processor allows programming a part while running production
- Production Statistics for cost estimating & scheduling
- Optional DXF file import & optional 3D Step file import
- Optional Animation / Bending simulation allows you to see programmed moves before running production
- Remote, off-line programming with stand-alone software or through installed network card
- Color touch screen monitor and industrial grade sealed keyboard for data entry
- Simple programming with Windows XP Pro® based operating system
- Exceptional accuracy and repeatability
- Sealed, oversize bearings for low maintenance operation over time
- Wire fed directly from coil
- A variety of servo drive options for combinations of faster feed and bending speeds
- Double acting hydraulic cutting system for high tensile wire on machines larger than 4mm capacity
- One keystroke transition between metric and English units of measure
- Optional video camera for machine monitoring or videoconferencing
- Merge individual part programs for production of complete assemblies or program to make alternating parts
- Programmable delay or hold functions to match downstream operations in work cells
- Spiral software function allows user to define any spiral with just three numbers
- Easily accessible tooling for minimal setup and changeover time
- Hardened and ground tool steel moving parts for exceptional wear and tool life
- I/O's for interconnection of auxiliary equipment such as robotics, threaders, & inspection devices
- Highest overall production speeds in the industry
- Parallel, Serial, Ethernet & USB ports
- Two bending head choices: Single stage or Turret Head indexing tool changer are available
- Temperature controlled electronics cabinets with washable filters

E-SERIES

- AFE-2D4
- AFE-2D6
- AFE-2D6-T
- AFE-2D8-T
- AFE-2D10
- AFE-2D10-T
- AFE-2D12-T



*Shown here with optional Lathe AL-8

BEST VALUE

Simple design and PC controls allow for easy service, high speed, reduced setup time and an attractive price. Each E-Series machine incorporates high-end components, "four wheel drive" feeders, quick setup straighteners, the latest technology in servo positioning, "dial-a-service", NEMA 12 with temperature control electronics cabinet. E-Series machines carry a one year parts and labor warranty!

EASY PROGRAMMING

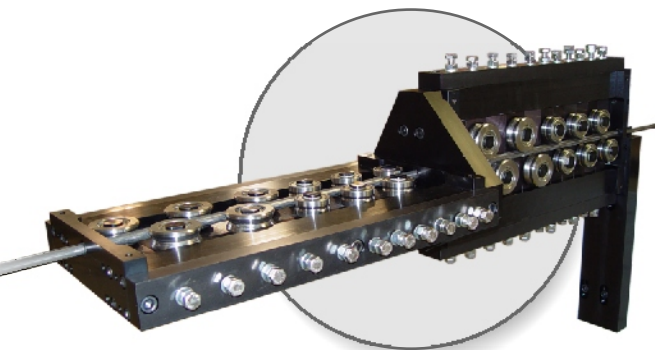
Bend complex two dimensional wire parts with very simple programming. With our new graphics viewer the user can envision the part before production. Connect to Internet for fast upgrades and service.

ROBUST ENGINEERING

With 15 years of experience these models are made to last. The hallmark of an AIM machine is its operational consistency over time. Performance specifications are extremely high and Reliability is built into the design.

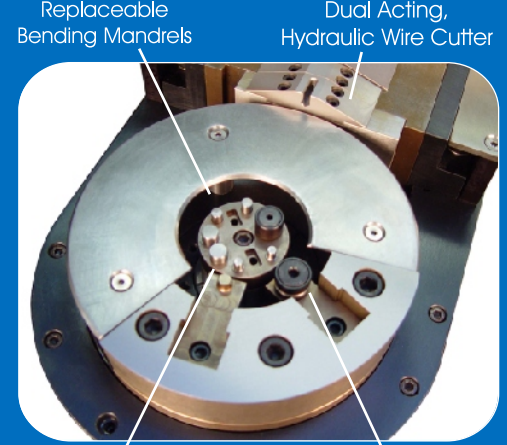
EXPANDABILITY

Optional accessories include Threading, Press, Drilling, Chamfering units and DC Mid Frequency automatic welders.



Dual Size Straightener Rollers for Wide Range of Wire Diameters

TURRET HEAD Indexing Tool Changer

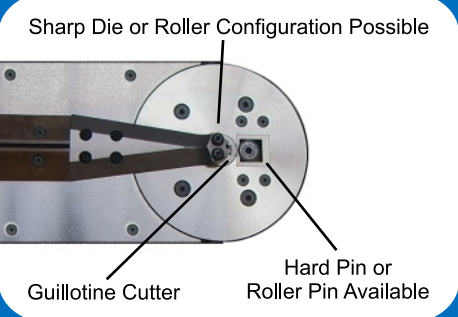


Replaceable Bending Mandrels
Dual Acting, Hydraulic Wire Cutter

Programmable Hard Bending Pin
Programmable Roller Bending Pin

Turret head machines offer two programmable bending pins. The **Hard Bending Pin** is used to form intricate bends and long running jobs, where tool wear may become an issue. The **Roller Pin** is used to produce arcs that need to be generated, with minimal marks on the wire. The tool cluster is the "heart" of the bender containing round pins, a roller and sharp bend dies. This variety allows the use of one tool set to accomplish many styles of bends; including a "press brake" style bend, when the radii of the bends are significantly less than the wire diameter. When the bending pins and tool cluster are coupled together they provide the user with up to **8 tooling combinations**. The hydraulic cutter (dual acting) produces burr free square cuts and delivers a "zero length" cutoff.

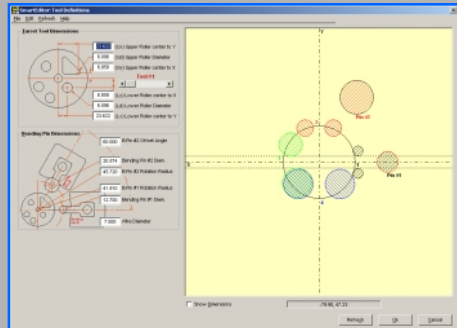
Non-Turret Configuration



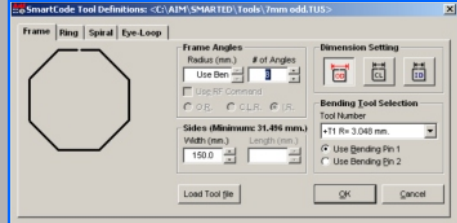
Sharp Die or Roller Configuration Possible

Guillotine Cutter
Hard Pin or Roller Pin Available

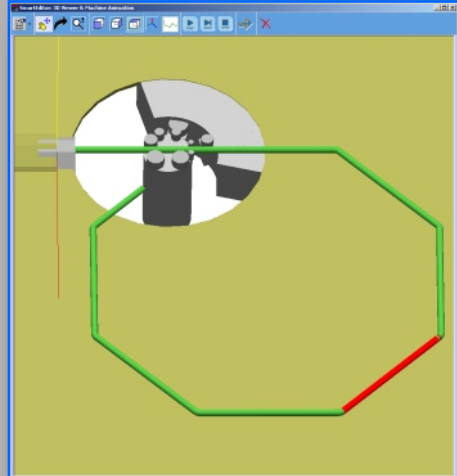
The Non-Turret configuration is the Original Bending Head and has been tried and tested in the field for more than a decade. Although it lacks the flexibility of the Turret Head it gains an advantage of cutting and forming in the same area without indexing the tools. This characteristic reflects less time to make a part, leading to a higher production rate. The cutting unit for this head is also powered by a robust hydraulic unit.



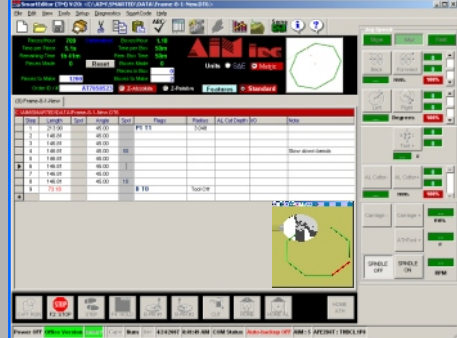
Graphic Representation of Installed Tools on Machine



SmartCode for Automatic Programming of frames, eye loops, rings & spirals



Animation Simulation



Simple Programming Interface. SmartEditor® helps figure out machine movements. User only needs to add feed length, bend angle, radius size & tool configuration

