

Alsina

FORMWORK SOLUTIONS

CORPORATE

CORPORATE • **TRANSPORTATION** • **WATER** • **ENGINEERING** • **MECANOCONCEPT**

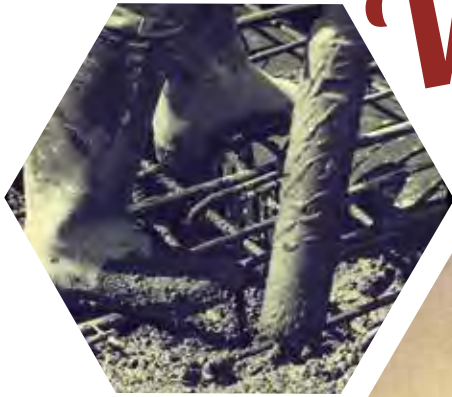


“Provide Solutions for Concrete Structures that help our Clients improve efficiency and safety in projects through dedicated service integrated within the Global Market, innovating and investing in People as a fundamental component of the business.”

Mission Statement

Core Values.

Alsina Formwork Corporate



Integrity: We value integrity above all and this means being sincere, honest and true to our word.

Innovation: We are engaged in constantly searching for new ideas and improvements in everything we do, both in products as well as business processes.

Simplicity: We conduct business naturally, in a friendly and humble way, far from arrogance and pride.

Deep respect for the individual: We show special consideration to others, especially to our employees who help create our family business spirit.

Commitment: All of us at Alsina are committed to and truly excited about the business plan.

Productivity: Productivity is the result of capable people who strive in the pursuit of simplicity in processes and decision-making.

Teamwork: For us, it involves coordination, trust, sharing and generosity; specially communication and participation regardless of the level of responsibility.

Customer focus: All the above values are at the service of our clients. The client is our reason for existence as a company and the center of all of our activities. Our organization and processes are geared to anticipating and meeting their needs.



COMPREHENSIVE SERVICE

Experience in complex projects. Alsina has 65 years of experience in the industry, thousands of completed projects back us as one of the leading companies in the industry given our technology and management skills.

We are a fundamental part of the business and therefore understand the complexity of carrying out major projects and assume the responsibility of advising and assisting our clients so they can achieve their goals.

Our goal is to offer one of the most expert services in the market. Therefore all areas of Alsina are interconnected in order to offer the best solution in each case and earn our customers' trust.

Comprehensive project management. Alsina's sales team consists of professionals who use their experience and professional knowledge to offer cost-effective and decisive solutions.

We understand the complexity of projects standing at our customer's side so that we can listen, advise and monitor the evolution of the works until completed.

We are on the client's side listening to them, advising them and always offering the best alternative to address their concrete project "in situ." Trust Alsina as a strategic partner.

Global Logistics Service.

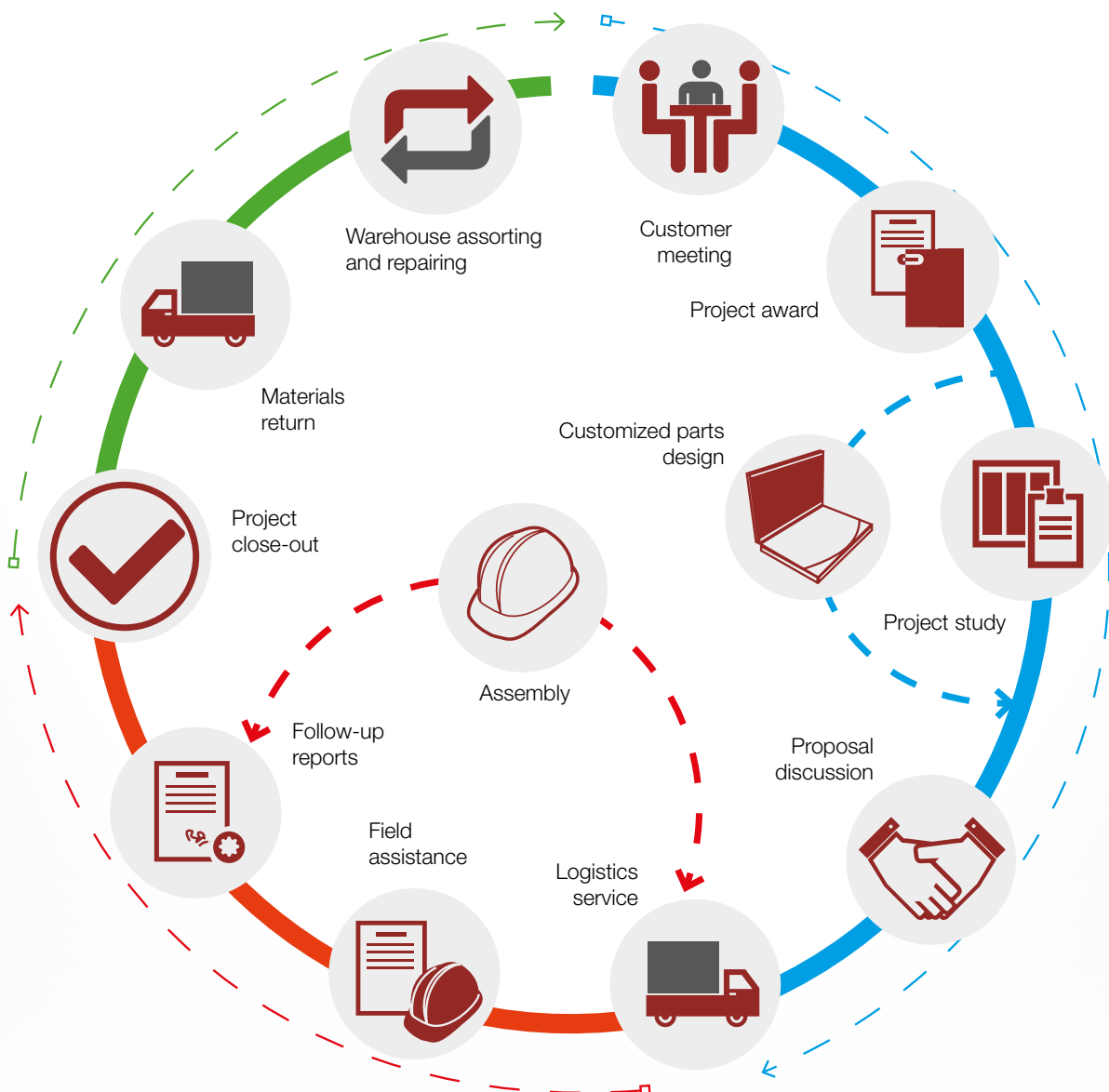
The logistics service is key to ensuring that the work is carried out within the time frame specified by the customer.

To do this, Alsina has its own network with facilities that ensure the supply of equipment "just in time" to guarantee the formwork rental service.

All of our formwork complies with the same cycle worldwide: delivery on site, implementation of the concrete structure, management of returns, repair of equipment under the quality standards of ISO 9001:2008 and return to the rental warehouse ready for use in another project.



Alsina strives to be one of the most recognized companies in the industry due to its comprehensive service capacity. The foregoing is a result of the quality of the company's human team, the range of solutions and services that Alsina offers its clients and its business management focused on total quality.



OUR GOAL: TOTAL QUALITY

Alsina works with the ISO 9001:2008 Certification at its centers engaged in the sale and rental of equipment for concrete formwork. The scope of this certification includes the design, manufacturing, marketing (sales and rental) and maintenance of our concrete formwork equipment. It also includes the provision of formwork equipment and scaffolding assembly services and the implementation of collective protection at work sites.

Design. The process of designing new systems ensures an orderly procedure in accordance with the standard: Planning product realization consistent with other systems and client specifications / Compliance with product standards and future technology reviews. / Control of product compliance pursuant to quality standards.

Manufacture. Manufacturing new systems involving full control: Planning the manufacture of the product according to the applicable standard. / Selection and ongoing evaluation of our suppliers in the supply chain. / Quality control of the product in line with quality standards.

Marketing. Marketing of our services and systems in sales and rental arrangements requires the following: Ongoing validation of the services provided to our clients. / Client complaint responses in accordance with the service provided. / Measurement and analysis of client satisfaction on a regular basis.





ISO 9001

BUREAU VERITAS
Certification



Maintenance. Control allows us to ensure the homogeneity of processes, methods and quality on a worldwide basis. Maintenance management systems through normalized and standardized processes. / Compliance with quality commensurate with product standards on the market. / Review of regulations and processes to ensure the required quality at all times.

On-site assembly. The assembly of formwork and scaffolding must be carried out pursuant to law, the equipment management and the applicable standard for each implementation. Ensure compliance with the specific standard for systems used. / Ensure integration in the process of all the companies providing the service. / Ensure the quality of execution and compliance with the deadlines.

Collective Protection. This activity requires a thorough monitoring of compliance with certifications, technical team management and the applicable regulations for each installation. Perform a study prior to implementation consistent with the project and existing regulations. / Involvement of trained personnel commensurate with required regulations. / Monitoring and control of installations made to ensure their validity over time.





ALSITEC: THE ALSINA GROUP TECHNICAL OFFICE

Alsina has its own technical office: AlsiTec. It is comprised of professionals with proven experience in studying works and providing comprehensive and cost-effective solutions.

All Alsina technicians are connected through a know-how network which allows them to be continuously involved in training. Our clients benefit from the accumulated experience in solving works worldwide.



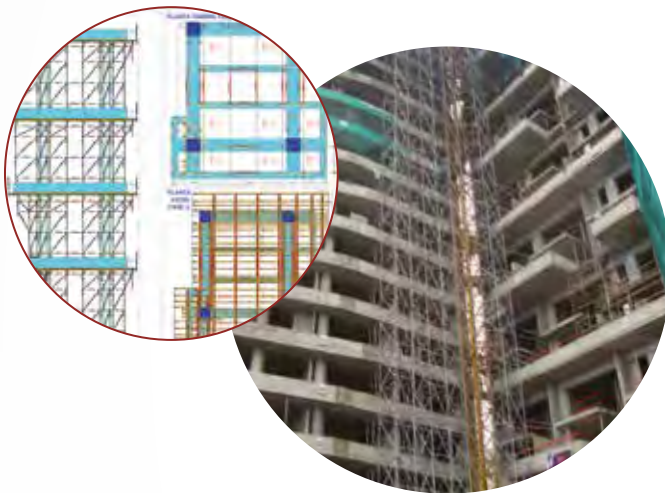
COMPLEX STUDIES

Some formwork solutions require a preliminary study to ensure the use to which it will be subjected.



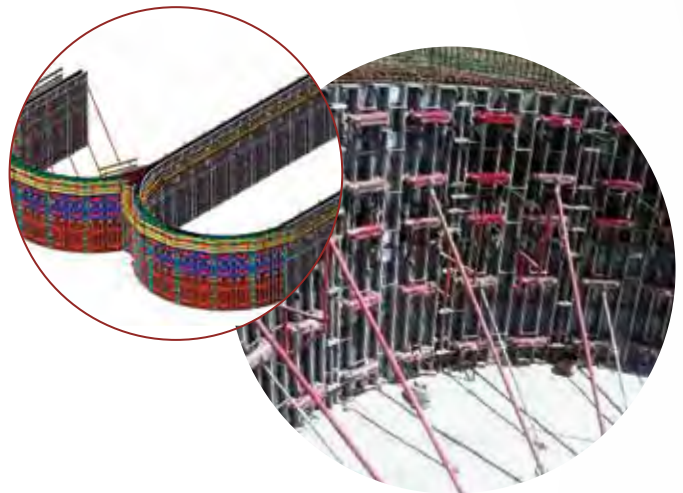
CERTIFIED CALCULATION

Sometimes it is necessary to conduct a certified study of the solution provided, for which Alsitec has its own engineers.



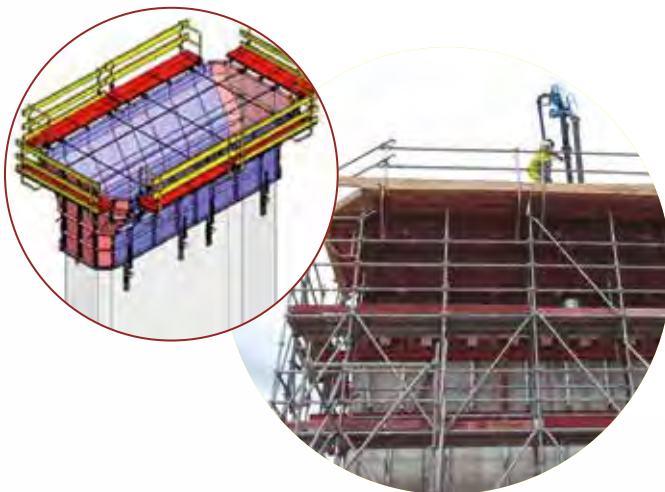
SOFTWARE DEVELOPMENT

Alsitec has developed more than 50 programs of its own for structural calculation and formwork system layouts.



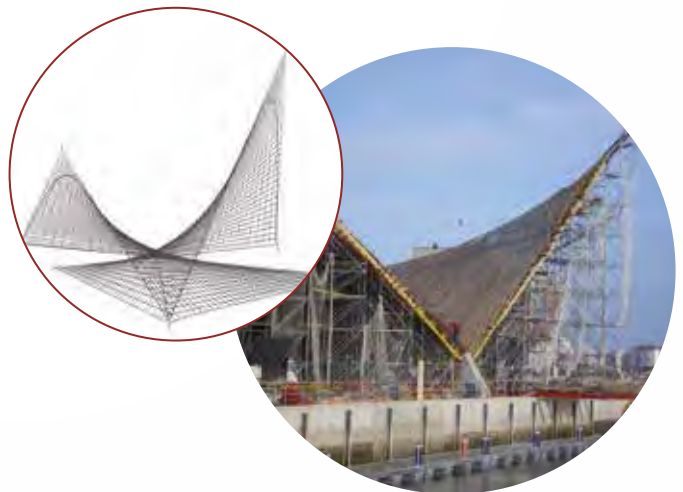
USING OUR OWN SOFTWARE

Using our own programs allows us to offer clients tailored solutions; we study 2,000 works every year.



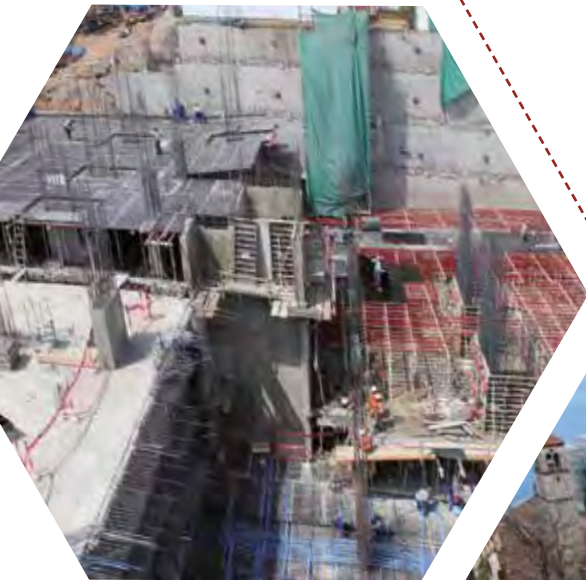
TECHNICAL LAYOUT

We provide detailed drawings and a count of all the proposed solutions, thus ensuring the client's success.



"IN SITU" SERVICE

Complex structures require a preliminary study to provide the right solution safely and profitably.



FRIENDLY FORMS

Alsina is committed to the development and constant innovation of new formwork systems that add value to the market. Over 150 Alsina patented solutions have helped industrialize the formwork sector. Alsina offers a team of people and facilities that are in close contact with our clients and develop the best formwork solutions.

Mecano Alsina. A key to Alsina's expansion is based on the implementation of its slab formwork systems. Mecano Alsina includes a full range of slab formwork systems, which are designed and perfected to offer on-site profitability exceeding the usual wood-based systems. More than 10,000 completed projects make us the leader in the Mecano system market.

Commercial. We offer a complete service in order to optimize implementation time and costs for each project. We offer the most cost-effective formwork for slabs and other Alsina solutions for walls, columns and scaffolding. Our systems are used in office buildings, hotels, museums, sports centers, health centers, schools and universities, among others.



Water. Alsina is a leader in the implementation of wastewater treatment plants, desalination plants and water works in general. The productivity of our systems in this type of work is crucial; in addition, there is also the development of special solutions for complex issues. The experience of having worked on over 750 projects is proof of our ability to tackle this type of projects.

Transportation. The constant supply of civil engineering equipment enables us to offer one of the most comprehensive services on the market. We effectively solve overpasses, viaducts, road widening, piers, abutments, tunnels, cut-and-cover tunnels, etc.

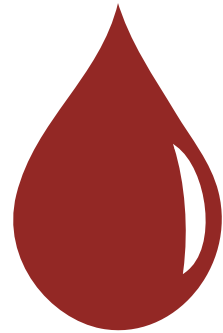
Dams. We have contributed our engineering capability in all these projects, whether conducting solutions that complement our formwork systems or adapting existing ones to the needs of each project and client. The execution rates, along with solutions adapted to the environment, have allowed us to successfully solve many works of this kind.

Ports. Alsina has implemented various projects related to the maritime environment: port silos, dock expansions, maritime barriers, port lights, capping beams, dam walls and the construction of dikes to cope with the force of the sea. In addition to our own experience and solutions, we offer the range of goods of the Rúbrica company, having reached an agreement with the same that allows us to expand our range of maritime activities.

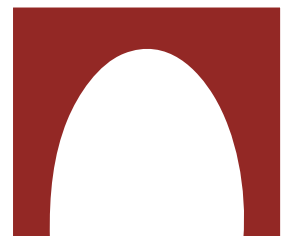
PROJECTS



MECANOCONCEPT



WATER



TRANSPORTATION



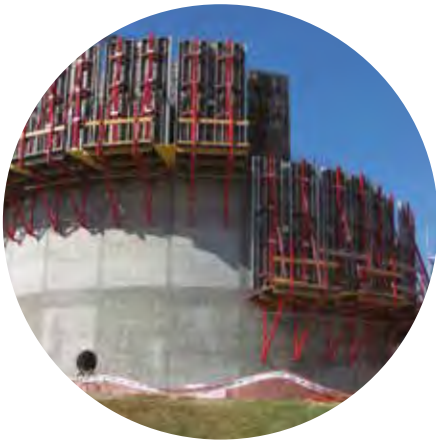
Tribunale Lecco Residential, **Italy**



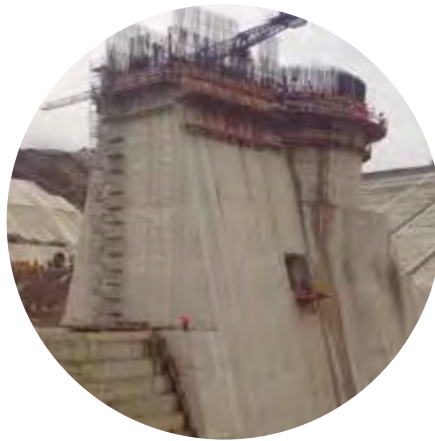
El Rosal building, **Colombia**



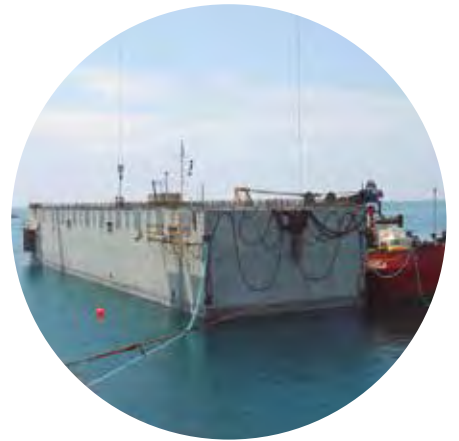
Miami University, **United States**



Benquerencia WWTP, **Spain**



Martil Dam, **Morocco**



Torre Vieja Water Tank, **Spain**



Ovidiu Bridge, **Romania**



Panama Metro Stations,
Panama

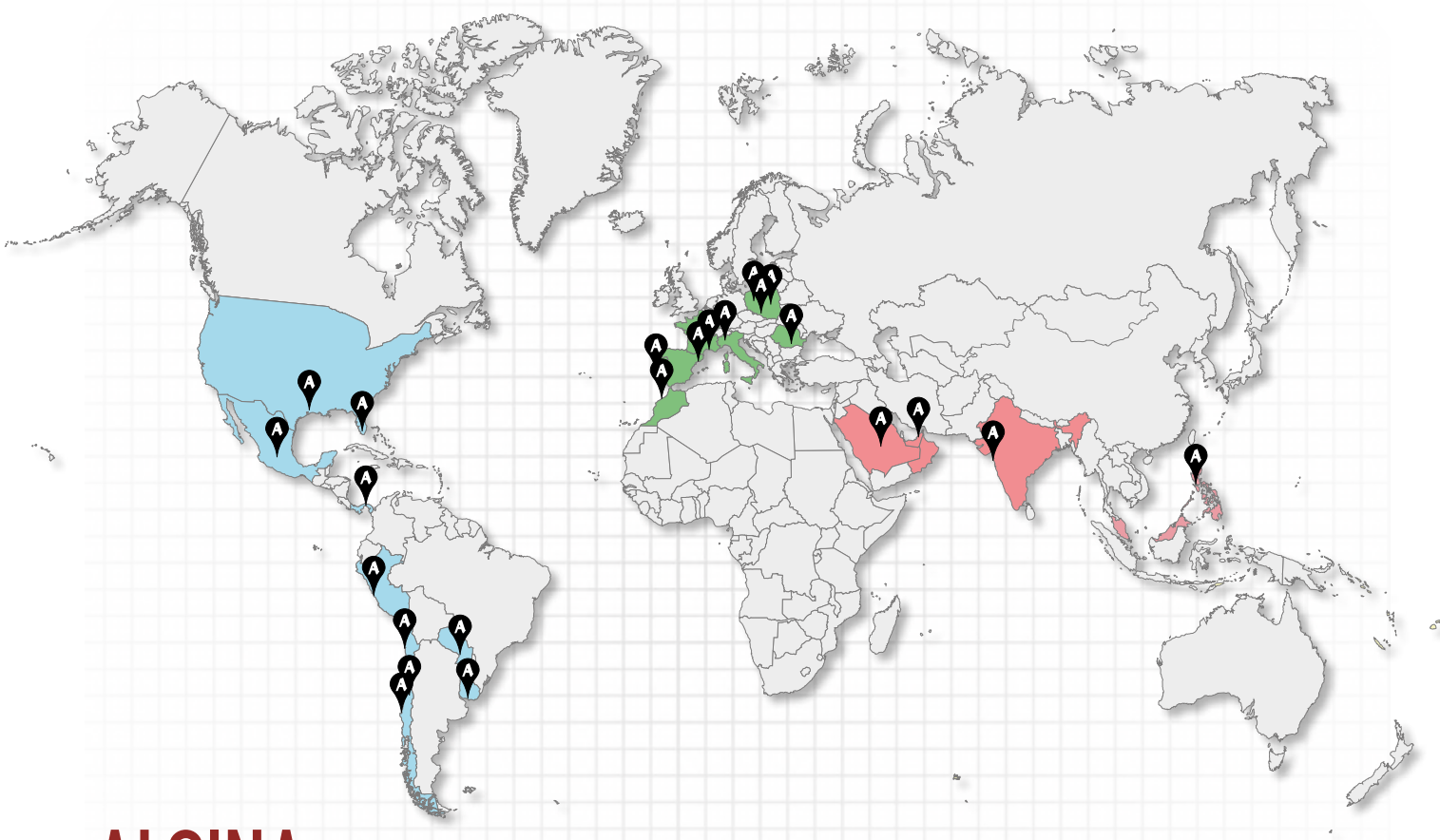


La Aldea Tunnel, **Spain**

GLOBAL PRESENCE

Alsina has its own network of 35 subsidiaries spread throughout the world. About 640 people are working at these sites. Alsina's personnel are interconnected via an internal network that allows them to keep abreast of the latest innovations and company news worldwide. Contact your local office to learn more about the Alsina Group.





ALSINA GROUP SUBSIDIARIES

Spain
www.alsina.es

Chile
www.alsina.cl

India
www.alsina.in

Italy
www.alsina.it

Mexico
www.alsina.mx

Morocco
www.alsinacoffrages.com

Panama
www.alsina.com.pa

Paraguay
www.alsina.com.py

Peru
www.alsina.pe

Philippines
www.alsina.com.ph

Poland
www.alsina.pl

Portugal
www.alsina.pt

Romania
www.alsina.ro

Saudi Arabia
www.alsina.com

United Arab Emirates
www.alsina.ae

United States
www.alsinaforms.com

Uruguay
www.alsina.com.uy



**More than
65 Years of
Experience**



**Using more than
75 own Software
Solutions**



**Comprehensive
Sales & Technical
Service**



**On Site
Consultancy
and Support**



**Dedicated Supply Chain
with our 35 Worldwide
Subsidiaries**



**Operating under the
ISO 9001:2008
Standard**



**Active on Staff and
Customers Training**



**Safety Systems
and Accessories**



Alsina Group

Tel. (+34) 935 753 000

Web: www.alsina.com

Mail: alsinainfo@alsina.com



Alsina Formwork Engineering

