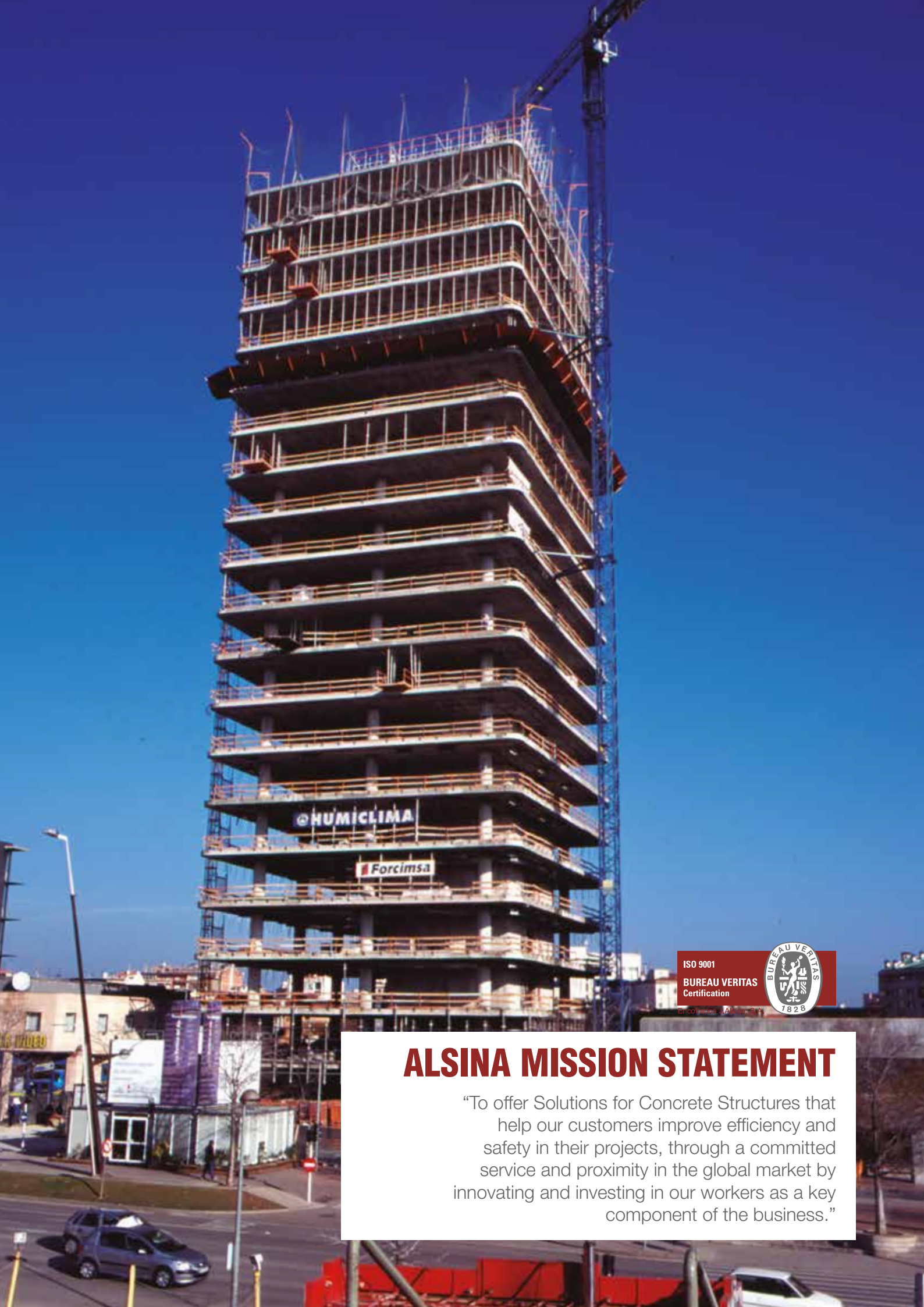


Alsina
FORMWORK SOLUTIONS

MECANOCONCEPT

CORPORATE • TRANSPORTATION • WATER • ENGINEERING • MECANOCONCEPT





HUMICLIMA

Forcimsa

ISO 9001

BUREAU VERITAS
Certification



Enrico Linares, Chairman

ALSINA MISSION STATEMENT

“To offer Solutions for Concrete Structures that help our customers improve efficiency and safety in their projects, through a committed service and proximity in the global market by innovating and investing in our workers as a key component of the business.”



COMPREHENSIVE SERVICE

Experience in complex projects. Alsina has 65 years of experience in the industry, thousands of completed projects back us as one of the leading companies in the industry given our technology and management skills.

We are a fundamental part of the business and therefore understand the complexity of carrying out major projects and assume the responsibility of advising and assisting our clients so they can achieve their goals.

Our goal is to offer one of the most expert services in the market. Therefore all areas of Alsina are interconnected in order to offer the best solution in each case and earn our customers' trust.

Comprehensive project management. Alsina's sales team consists of professionals who use their experience and professional knowledge to offer cost-effective and decisive solutions.

We understand the complexity of projects standing at our customer's side so that we can listen, advise and monitor the evolution of the works until completed.

We are on the client's side listening to them, advising them and always offering the best alternative to address their concrete project "in situ." Trust Alsina as a strategic partner.

Global Logistics Service.

The logistics service is key to ensuring that the work is carried out within the time frame specified by the customer.

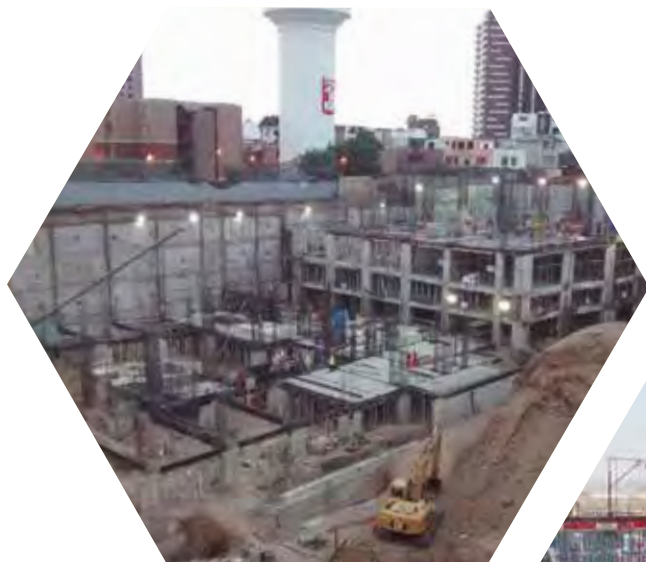
To do this, Alsina has its own network with facilities that ensure the supply of equipment "just in time" to guarantee the formwork rental service.

All of our formwork complies with the same cycle worldwide: delivery on site, implementation of the concrete structure, management of returns, repair of equipment under the quality standards of ISO 9001:2008 and return to the rental warehouse ready for use in another project.

RESIDENTIAL

Alsina Group is an international leader in the implementation of housing facilities. Our experience in engineering innovation and service enables us to offer a variety of formwork solutions to successfully resolve different concrete structures worldwide.

We offer systems that provide safe solutions adapted to each particular need which our clients value due to their high performance level and safety in the works.



Vista Verde
Residential, **Peru**

Residential
Complex, **Qatar**





Il Rondo Residential, Italy



Herman Park
Apartments,
United States

Residential
Complex,
Poland



Living
Residential
Complex,
Colombia

SKYSCRAPERS

One of Alsina's strengths is its commitment to innovation, research and development of new products and solutions that have contributed to safety and efficiency in building construction since its inception. This is especially important in the construction of high-rise buildings given the great level of complexity involved in their construction. Developers around the world have relied and continue to rely on Alsina for the construction of skyscrapers and high-rise buildings.

Titanium Park —
Offices, Chile



Giax Tower,
Italy —



—
El Rosal
Building,
Colombia



Fitz Roy —
Building, Peru



—
Alto Miramar
building, Chile

HEADQUARTERS

Alsina has been a pioneer in reusable slab formwork systems since its inception; hence the company has an extensive experience in the successful implementation of thousands of projects around the world, thanks to its profitable, safe and reliable friendly forms designs.

Alsina formwork solutions have been used in noteworthy facilities projects such as The BBVA Headquarters in Madrid (Spain) or the World Trade Center in Paraguay, among many others.



Banco Popular Headquarters, Spain



Biomedica Research Headquarters, Spain



World Trade Center, Paraguay



Pamplona Airport Corporate Headquarters, Spain



BBVA Bank Headquarters, Spain

HOSPITALS

Alsina has an extensive experience in the implementation of Hospital Facilities around the world, being capable to face multiple projects thanks to its safe, reliable and profitable formwork systems. The company has participated in the successful implementation of several Hospitals so far, such as the Antofagasta Hospital in Chile, The Children's Hospital In Texas (USA) or El Salto Hospital in Uruguay, among others.



ATE Hospital, Peru



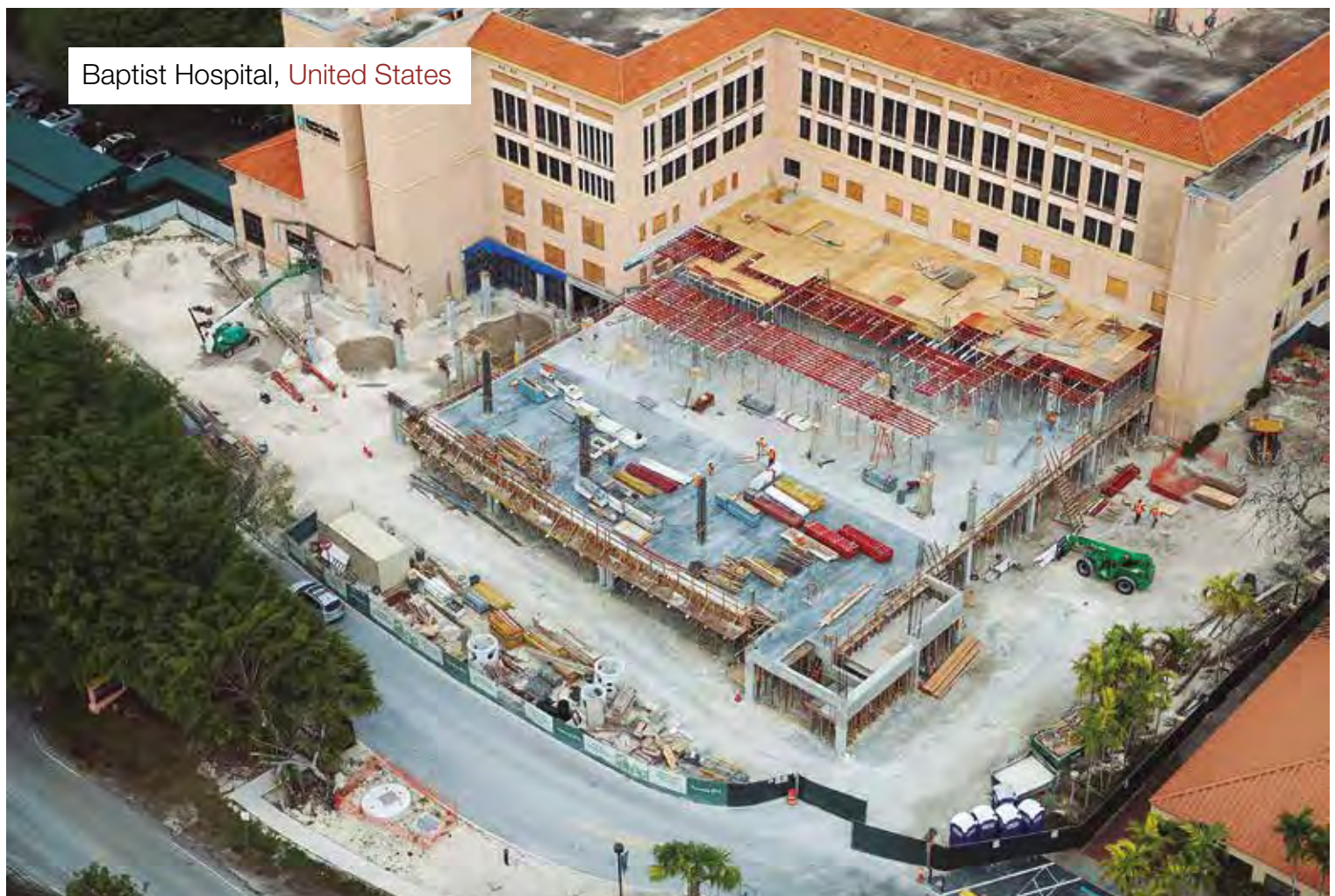
Antofagasta Hospital, Chile



Texas Children Hospital, **United States**



Puigcerda Hospital, **Spain**



Baptist Hospital, **United States**



MALLS

Our engineering solutions, such as the new Modular Hanging Beam system, are adaptable to all types of construction, a perk that along with our reliable supply chain ensuring formwork delivery according to each constructive work phase has allowed us to successfully participate in the implementation of so many diverse projects around the world, such as the Westland Mall in Panama, Las Arenas Mall in Barcelona (Spain) or the Arauco Maipu Mall in Chile, among others.

Westland Mall,
Panama



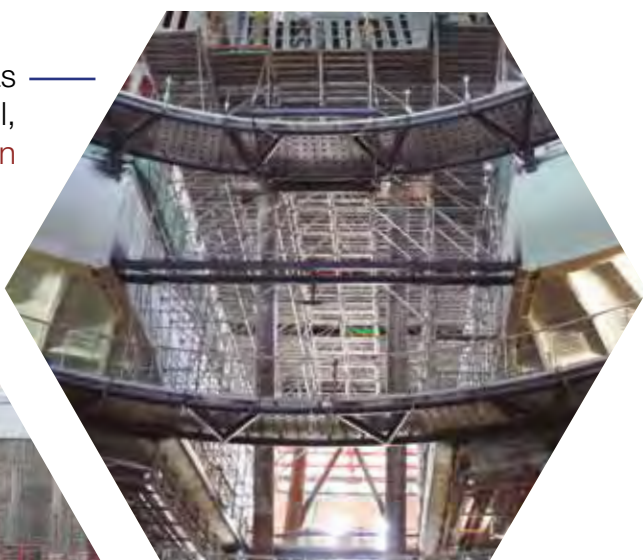


Aragonia Mall, Spain



— Anfla Place Mall, Morocco

Las Arenas Mall, Spain



— Portal Nuñoa Mall, Chile



Poema del Mar Aquarium in Gran Canaria, [Spain](#)



Cultural Center Lugano, [Switzerland](#)



Lloret Casino,
Spain



Pozuelo de Alarcon
Cultural Center,
Spain



Miami University,
United States



COMMERCIAL

Civic facility projects often have a certain degree of complexity in their structures: sports, education, health, social, cultural and recreational centers, as well as private facilities, shopping centers or large areas. Many of these projects are designed by the most renowned architects and include solving both simple as well as complex structures.

Alsina is a leader in the implementation of these facilities, we have a wide range of formwork solutions that meet the structural needs of the same. In addition, Alsina's clients value the experience, profitability and safety of our solutions adapted to their needs and projects.



**Comprehensive Sales
and Technical Service**



**Comprehensive logistics
service "just in time"**



**Cost-effective and
Safe Slab and Beams
Solutions**



**Straight and radius
wall solutions, both
crane-set and hand-set**



**Resistant and safe
props, shoring and
scaffold systems**



**Columns, pilasters
and shear wall
solutions**



**Safety Systems
and Accessories**



**Formwork
Accessories**



Alsina Group
Tel.: (+34) 935 753 000
Web: www.alsina.com
E-mail: alsinainfo@alsina.com



Alsina Formwork Engineering

