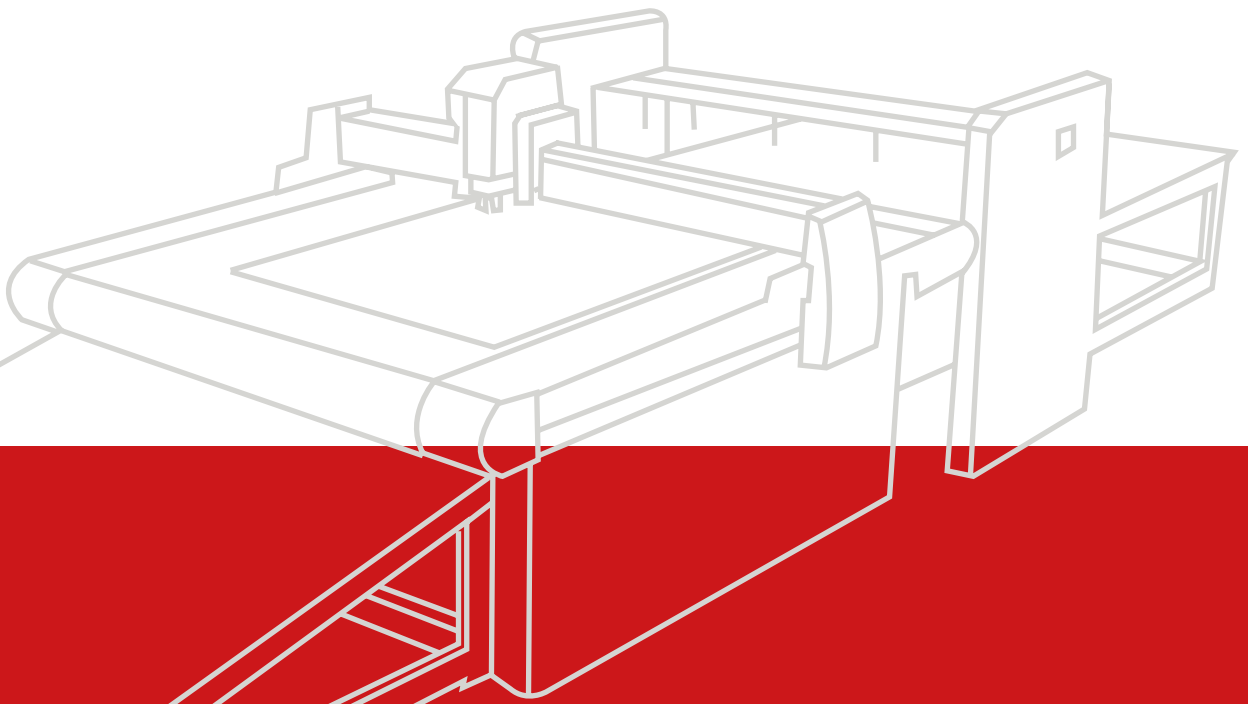




## Easy Matrix - Plotter & Dieroom Equipment





Clear tech focuses on giving practical and productive solutions by collaborating actively with plenty of machinery users, both for die-making and die-cutting, who contribute with their needs and ideas regarding the most optimal solution.

The commitment towards total satisfaction is what motivates the whole team in Clear tech to only produce machinery of high quality and performance that provides the users with productivity and assurance.

# index



handwork tools p · 4  
Easy**matrix** SM p · 6  
Plotter **Phoenix** p · 8  
Plotter **X-PRO** p · 10  
Waterjet **bp-c 1010** p · 12  
Láser **smartline 2515** p · 14  
Láser **speedline 3000** p · 15

Easy**rubber** SM p · 16  
Easy**cutter** p · 18  
Easy**bender** XR p · 19  
Easy**bender** S3 p · 20  
Easy**bender** NS2 p · 21  
Easy**bender** S1 p · 22  
Easy**bender** Sailing p · 23

## easystripp



This pneumatic machine is easy to use, cleans easily the exterior of both compact and corrugated cardboard. It is a light machine that moves manually up and down next to the cardboard removing continuously the residues. It has a quick air turbine of large reach, easy and clean while removing remains of small parts, waste and moldings. Approved by the EU.

## easycut



- Tool Module of a single piece with possibility of sharpening
- Inferior exit of cutting
- Milimeter rule of 500mm
- Operating the side lever makes it unnecessary to fix it on a table
- Block for fixing different measures
- Guide for centering locator

## rule notching machine



Maximum capacity of 2 and 3 pts for cutting & 4 pts (soft crease). Standard bridge of 6 mm adjustable up to 19 mm.

Dimensions and weight: L700xW250xH300 mm and 16 Kg

## rule bending machine

Maximum capacity of 2, 3 and 4 pts  
Includes 24 tools

Dimensions and weight: L1100xW620xH150 mm and 32 Kg



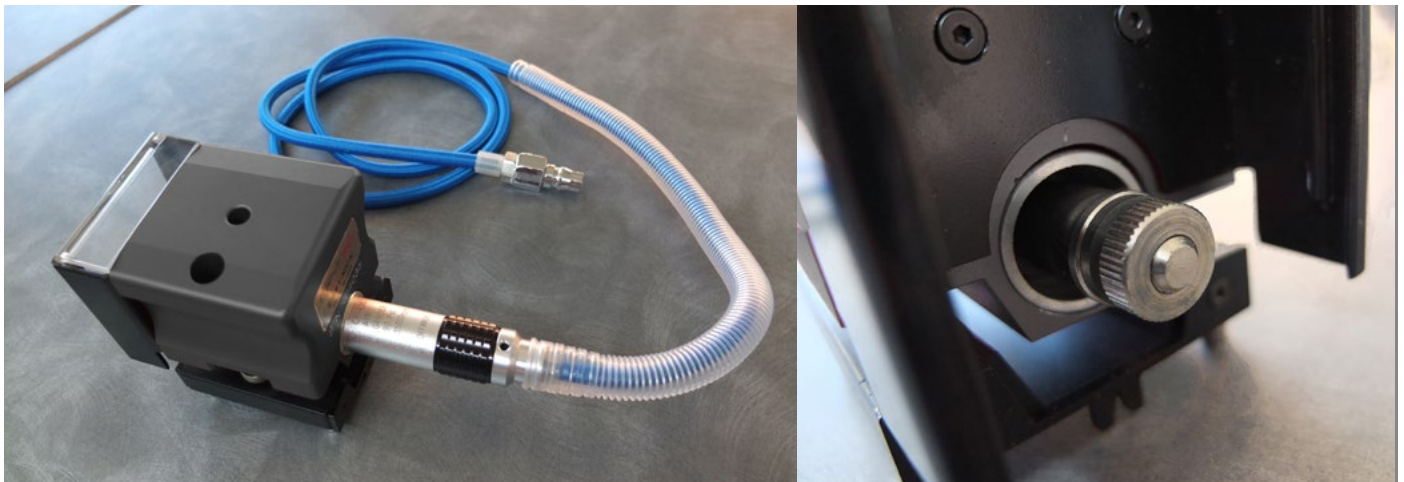
## rule lipper cutter machine

Maximum capacity of 2 and 3 pts for cutting & 4 pts (soft crease) and 35 mm of height

Dimensions and weight: L700xW250xH300 mm and 16 Kg



easy**nick**

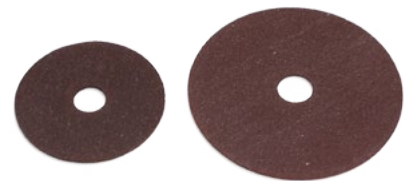


#### INCLUDES

- Rubber saver
- Centering guide
- Depth block
- Protective screen for the disc breaking

#### ACCESSORIES

- Protective glasses
- Filter
- Keys
- Connection tube



## tools



**Strip extractor**  
2, 3 and 4 pts. red



**straightener / alineator**  
2 pts. / 3 pts. / 4 pts. / 6 pts.



**chisel autopress**  
2, 3 and 4 pts. red



**chisel**  
0,5 mm / 1 mm / 1,5 mm / 2 mm

## easy**matrix** SM

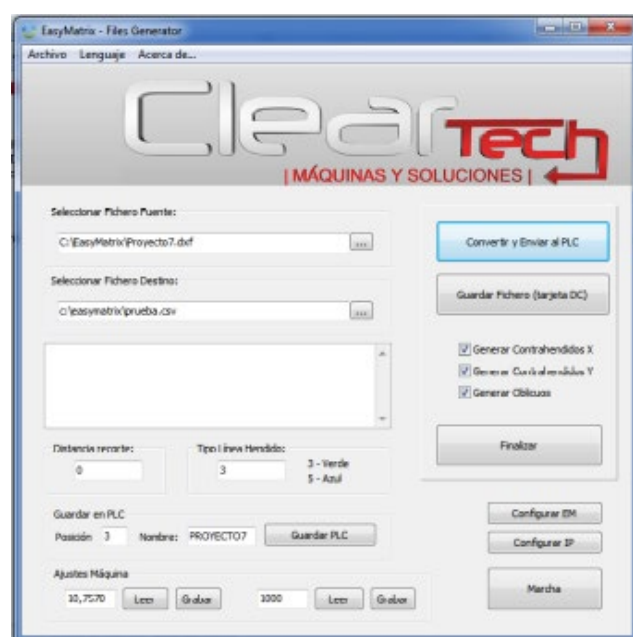


EasyMatrix SM is the new compact model which will provide you with the convenience and maximum productivity in preparation works for dies.

The automatic cutting system of matrix EasyMatrix is based on capturing automatically all of the existing matrix in your design of the die, being able to differentiate between pro / against fiber matrix to choose the ideal measure.

At the same time, it allows you to plan and control the cutting process of matrix.

EasyMatrix carries out a quick work with maximum precision. It is not necessary to make measurements over the die or do any hard work: the machine does the work itself. You only need to collect the strips which have been cut and place them on the die.

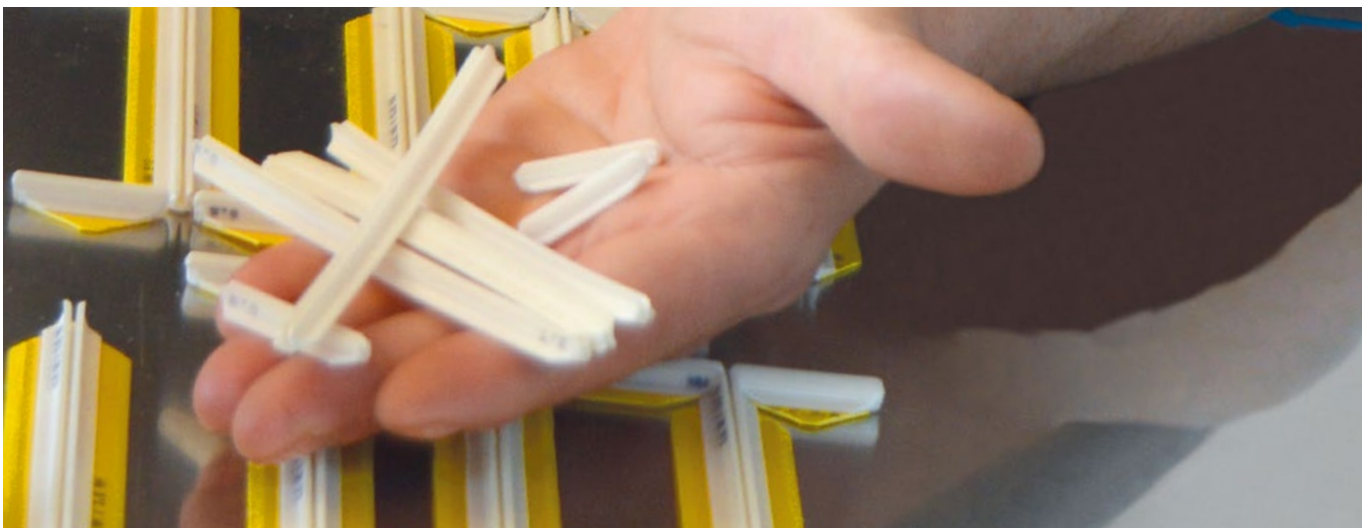


## easy**matrix** SM



### FEATURES

- Automatic classification for different types of matrix
- Cuts any types of current market matrix
- Import files in Dxf
- Connection network and remote technical assistance
- Easy calibrating process



## plotter X-PRO



Automatic machine for preparation of samples and short series of diverse materials equipped with a potent air oscillator.

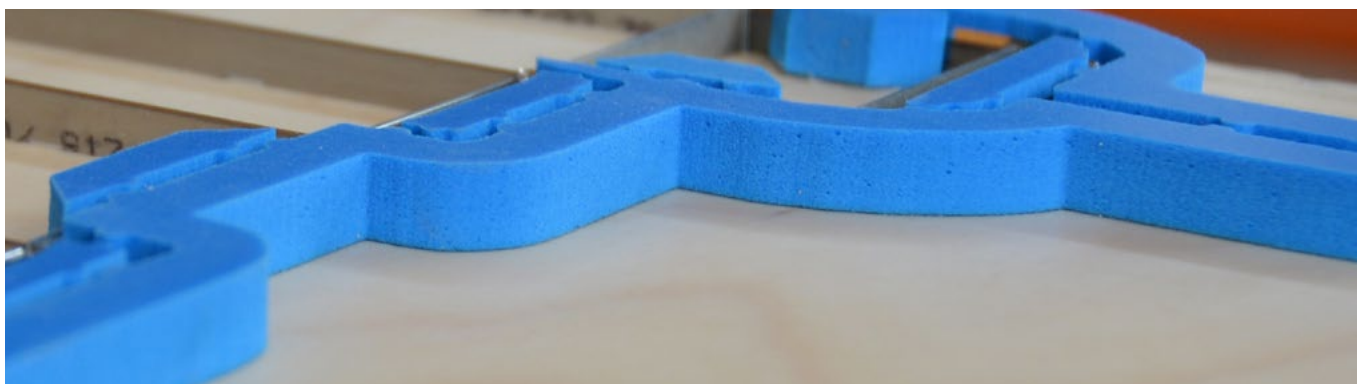
Its design, as well as its open structure, allows XPRO to offer the complete spectrum of digital solutions in cut and crease of any type of material, besides drawing the sketches for your works.

XPRO features a format specifically designed for automatic production in cut of rubber plates up to 1000 x 1000 mm and from 15 to 65 shores for dies.

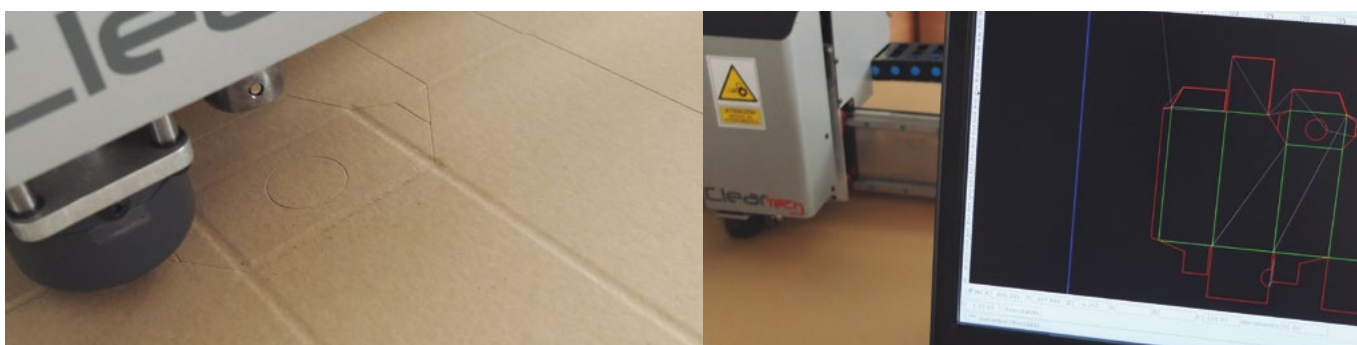
Equipped with a multifunction head with two tools controlled tangentially and vertically (axis Z). It includes a propelling pencil to draw the drawings and also a laser pointer for the positioning. It also features a pressure trader and a pressure regulator for the auxiliary tool's pressure.

Motors: servo, traction by pinion, axis Z ball spindle.

It also includes a PC with graphic numeric control which allows interactive manipulation of geometries, the position and parameters of cut. Accepts HPGL, CNC ISO and DXF files. Possible entrance of data via USB or Ethernet.



The plotter X-Pro allows you to generate and optimize automatically the rubber and its following cut.



## TECHNICAL SPECIFICATIONS

CE marking, emergency button, impact protection, photoelectric security switch and light landmark of attention

Acceleration	0.7G
Speed	Up to 60 m/min
Pneumatic consumption	80 liters minute 6 BAR
Max. thickness of material	30mm
Repetition toleration	±0.06 mm
Data formats	HPGL compatible o DXF
Power	Vacuum pump 2.2 kw: 380 V – 50/60Hz – 5 A
Data interface	USB, Ethernet
Environmental conditions	10° - 30° C – Humidity Rel. 40-80% - Uncondensed

## AVAILABLE FORMATS

- 1000 x 1000 mm
- 1300 x 1700 mm
- 1700 x 1600 mm
- 1600 x 2500 mm

## INCLUDED ACCESSORIES

- Cutting mat of 3 mm
- Toolsholder for crease rules
- Flat blade (2 pieces)
- Adapted sharp end blade (different finishing)
- Creasing rule for cardboard 2 pts, 3 pts,
- Creasing rule for corrugated cardboard.; R7,0
- Propelling pen. Pen included
- Zenith camera for positioning
- PC with program installation

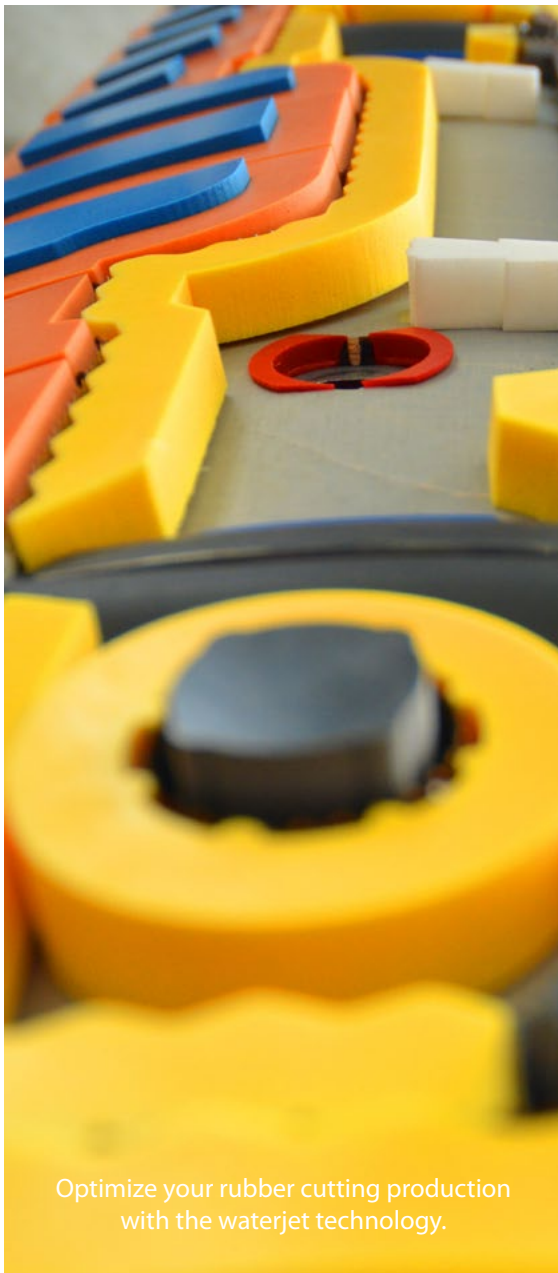
## waterjet bp-c 1010



The BP series machines are characterized by a robust construction which allows a high efficiency with less maintenance. The motorized Gantry system in Y axis allows high acceleration and high speed, to reduce operative time.

BP-C cutting machines offer a functional, precise and cost effective installation.

The maximum performance with a minimum investment and maintenance.



Optimize your rubber cutting production with the waterjet technology.



#### TECHNICAL DATA

Speed of max simultaneous positioning	70 m/min
Max speed of cut	20 m/min
Machine tolerance by VDUDGQ 3441	$\pm 0.05$ mm/m
Precision of repetition	$\pm 0.025$ mm/m
Pump power	15 CV.

#### WATERJET CUT SYSTEM FEATURES

- The most versatile cut system in the actual market, covering the whole spectrum of materials and thicknesses, including the hardest and thickest materials. It cuts everything
- Low temperature of cut avoids thermal alterations in the rubber's adhesive
- Clear cut without damaging atmospheres which makes unnecessary any future finishing work
- Optimal utilization of raw material with insignificant decrease
- Reduced operating costs

## flat laser smartline 2515

### flat cut



#### LASER CUT SYSTEM SPECIFICATIONS

- Acceleration speed: 19,6 m/s<sup>2</sup> (2G)
- Maximum speed of simultaneous positioning: 160 m/min
- Precision:  $\pm 0.05$  mm
- Offering high yields with minimum maintenance costs
- Excellent quality of cut in thin and thick materials
- The Serial Smartline CO<sub>2</sub>: Resonator FANUC or ROFIN. Power from 1kw to 3kw. Fanuc control
- Compact design with protection for the operator
- Lens change via interchangeable cartridges
- The best results in cuts with the constant compensation through the adaptive mirror focal
- Network connection with external PC



# rotary laser speedline 3000

## rotary cut



### ADVANTAGES OF LASER CUT SYSTEM

- Exceptional access to the machine by providing an area of 3000 mm for an easy positioning of big boards.
- Automatic change of focal distance. High autonomy thanks to the collisions detection, changer of lens cartridges, nozzle changer and its centering. All these functions reduce unproductive time and increase security. The user interferes with less frequency which allows him/her to focus on planning and control.
- Low production costs due to hard-wearing semiconductor excitation and a maintenance-free magnetic bearing turbine.

### TECHNICAL DATA

Heads	1
Max. speed of pos. (simultaneous)	160 m/min
Max. axial	19,6 m/s <sup>2</sup> (2G)
Repetitiveness	± 0.025 mm/m
Powers	From 1.000w a 3.000w
Smoke extraction system	Included
Refrigeration system	Included

## easyrubber SM



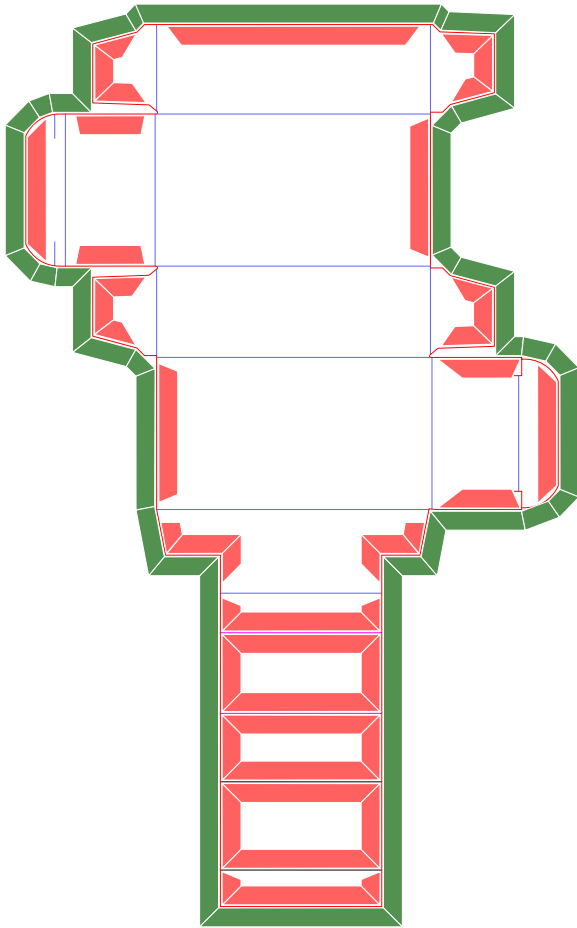
Easyprofile SM has been developed by Clear tech to speed up the process of rubber coating in professional dies.

The new Easyprofile SM rubber profile dispensing machine will provide you with the convenience and maximum productivity you have always desired for the work of rubber coating dies. The automatic rubber cutting system is based on capturing automatically every cutting line present in the design of your die, being able to differ the ones which require profiles.

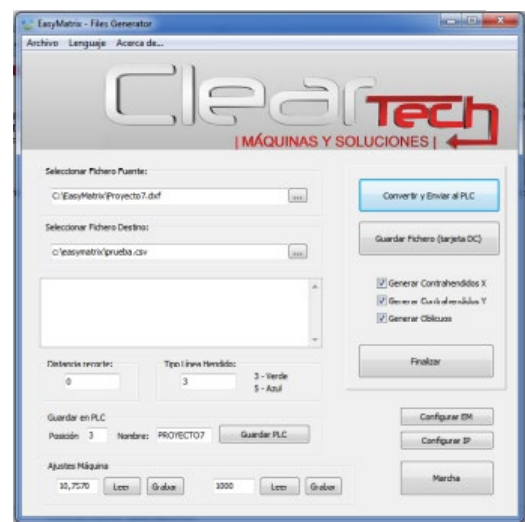
It also allows you to plan and control the cutting process, having the possibility of adding or removing sections. Another great advantage is its cut at an angle of 45°, which allows a perfect link between the parts.

Easyprofile SM develops the work in a very quick manner along with a maximum accuracy. It is no longer necessary to take measurements on the die or to work too hard: this machine will get the work done. You only need to pick up the strips as they come out of the Easyprofile SM and to stick them on the die.

Easyprofile SM accepts all conventional sizes and profile shapes.

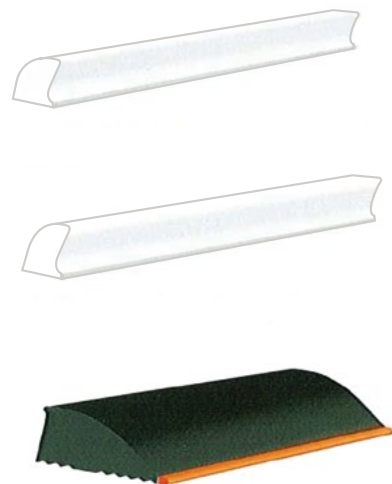


The powerful software Pack Rubberprofile automatically generates all of the profiles in the die and allows you to eliminate, change or modify lines adapting to your profile preferences.



## FEATURES

- Automatic classification for different types of profile
- Cuts any types of conventional profiles
- Import files in Dxf
- Connection network and remote technical assistance
- Easy calibrating process
- Easy calibrating process



## easycutter



Unsurpassed in speed and versatility.

The EasyCutter uses a bending mark to locate bends with our patented Compact Tooling Module. Die-makers are buying this unit to process all the straight sections of cutting rules that do not need to be bent, as well as crease rules in the die.

### FEATURES

- Fully-automatic Processing
- Cutting
- Notching
- Mitering
- Marking on bending position

## easybender XR



### FEATURES

- Fully-automatic processing
- Cutting
- Bending
- Notching
- EasyB software: running on supplied Windows 7 computer, compatible with standard design formats

EasyBender XR uses no-notch rotary rules, and adds relief notches only where they are needed.

This provides a stronger die which contributes to a higher performance and durability.

It measures the length and cuts, miters, notches and bends the rule precisely, using the information in the CAD file.

## easybender S3



**Automatic height adjustable tool module**



**Automated selectable 3-blade nicking device**



**Depth adjustable broaching on both sides of steel rule**

With the EasyBender S-3 SDS you can access the biggest product portfolio within the general type dies. The EasyBender S-3 satisfies the needs for short make-ready times, top quality and high productivity.

With a maximum height of 31.75 mm, this machine is the ideal addition to the EasyLift, particularly for using various kinds of rules.

When it comes to producing dies of high accuracy, the S-3 is a truly reliable machine.

### FEATURES

- **Notching height adjustment**
- **3-Blade nicking system**
- **Depth adjustable broaching**

## easybender N-S2



Possibility of carrying out smaller perforating



Nicking device



Depth adjustable broaching on both sides of rule

### FEATURES

- High level of automation
- User friendly operation
- Ultimate productivity

Die-making of maximum level and performance with the EasyBender NS-2 technology. Impressive productivity with wide range of steel rules.

The EasyBender NS-2 processes a wide range of different steel rules.

It supports die rule cutting with a cutting & bending performance that is high in its class for most kind of steel rules, with a height ranging from 23,3 mm to 50,8 mm and a thickness of up to 4 pts (1,4 mm).

\* With the EasyBender NS2 and its all in one die-making system, you can be the most advanced die-maker in the world.

## easybender S1



It's time for the automatic rule processing.

Great price and great reliability.

The die-making market is in a constant state of flux.

Fierce competition on prices leads us to create a cost-efficient machine.

Discover the low price automatic bending machine without any hidden optional items.



### FEATURES

- **EasyB Software** - SDS' R & D center has developed this powerful software which is provided with the machine. The Calibrating function of the software makes the machine accept all the steel rules existing in the world.
- **Standing rule** - The steel rule is standing up straight during feeding and processing, which provides a symmetrical bending for left & right.
- **Dual mode** - The machine is ready for two different thickness of steel rule that you use frequently. You do not have to fuss over to change the machine parts to use another kind of rule. All in one to be able to change quickly from 2 pts to 3 pts and vice versa.
- **Punch Tools** - It provides a straight cut at the beginning and the end of the miter, and notches of up to 3 different sizes. The unique and patented technology of the Tool Module makes it possible to achieve an accurate and stable cut.
- **Nicking** - Nicker (optional): you can choose inline nicking system to put the nick on the rule very quickly. Of course, you can choose the nicking blade thickness you desire.

## easybender sealing



### FEATURES

- **Unique Feeding System**

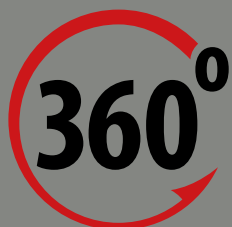
The unique feeding system considers the strengths and weaknesses of the label rules.

- **Stable and simple structure**

This core structure has been developed and improved for over 20 years, since it was first announced in 1994.

It is the ideal bending machine specialized for small steel rules to satisfy the growing requirements in die-making, and the integration of cell phones.

It accepts rules with heights ranging from 8 to 12 mm without having to change any parts, which makes the operator save time from tool changing and adjusting.



Polígono Industrial 17  
Partida Lloma Llarga Parcela 2 - (CD 1030)  
46119 • Náquera • Valencia • Spain  
Telf: (+34) 961 588 860  
Fax: (+34) 961 588 229  
[info@cleargroup.es](mailto:info@cleargroup.es)  
[www.cleargroup.es](http://www.cleargroup.es)

