



# Systems for cleaning industrial liquids





# Rösler process solutions, working in perfect harmony



Rösler offers proven and effective all-in-one, complete solutions for the cleaning of industrial liquids. By conducting extensive production trials we always find the optimum solution for the specific requirements of our customers. This includes the determination of the best cleaning technology and also covers the selection of optimum peripheral equipment. We know from experience that only all-in-one solutions produce the results that meet the customer needs. This philosophy has been proven many times over and is reflected in our manufacturing depth that is unmatched in the industry. This is the reason why, with our innovative equipment technologies and high quality standards, Rösler has been able to establish itself as the global market leader.

**We support our customers in more than 60 countries with a network of sales and manufacturing branches along with international distributors and sales representatives.**



Rösler is the only supplier in its field that maintains numerous **test centers** around the globe which are equipped with the latest equipment technology and where we develop process solutions under actual production conditions. This prevents not only long travelling distances and high transportation costs for our customers, but also ensures easy access to our process specialists and state-of-the-art equipment resulting in optimum process and equipment solutions.

## For our customer this translates into:

- Process solutions that are environmentally friendly and protect our natural resources
- Savings in consumption of fresh water and production materials
- Longer machine uptimes
- Cost reduction
- Compliance with environmental legal standards
- Improved part qualities
- No requirement for auxiliary filter materials



## Test centres around the world

## Complete process solutions

## Team spirit

The test centre for mass finishing and shot blasting at the headquarters of the Rösler group in Untermerzbach, Germany has:

- Nearly 100 different mass finishing and shot blast machines
- On an area of about 2,700 m<sup>2</sup> (27,000 sqft)

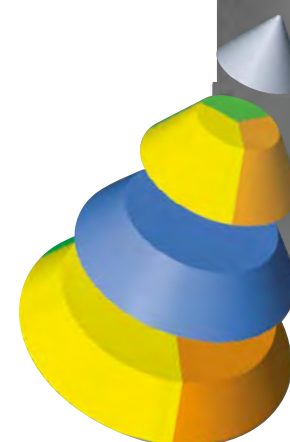
You will find similar test centres and expertise at our branches in USA, UK, France, Benelux, Spain, Turkey, Romania, Italy, Austria, Switzerland, Russia, Brazil, Serbia and India.

Besides demanding high quality, environmentally safe and efficient products, we find our customers also prefer to purchase all process components from one single source. That is why we offer not merely the processing equipment but the complete package, with perfectly matched consumables. This guarantees the best peening results, with absolute process safety. Our global service teams take care of the delivery and the installation. Qualified engineers train our customers, right on location. Of course, our after-sales service members will answer all your questions. A quick supply of all spare parts and professional consultation by our experienced process specialists, ensures that your finishing processes are always running smoothly.

Rösler is a dynamic company, in which the initiative and commitment of each single employee plays a key role. Systematic, ongoing training and a cooperative management style combined with a lean organisational structure are key elements of our people orientated philosophy. Naturally, our comprehensive apprentice program ensures that today we are already grooming the skilled employees of tomorrow.



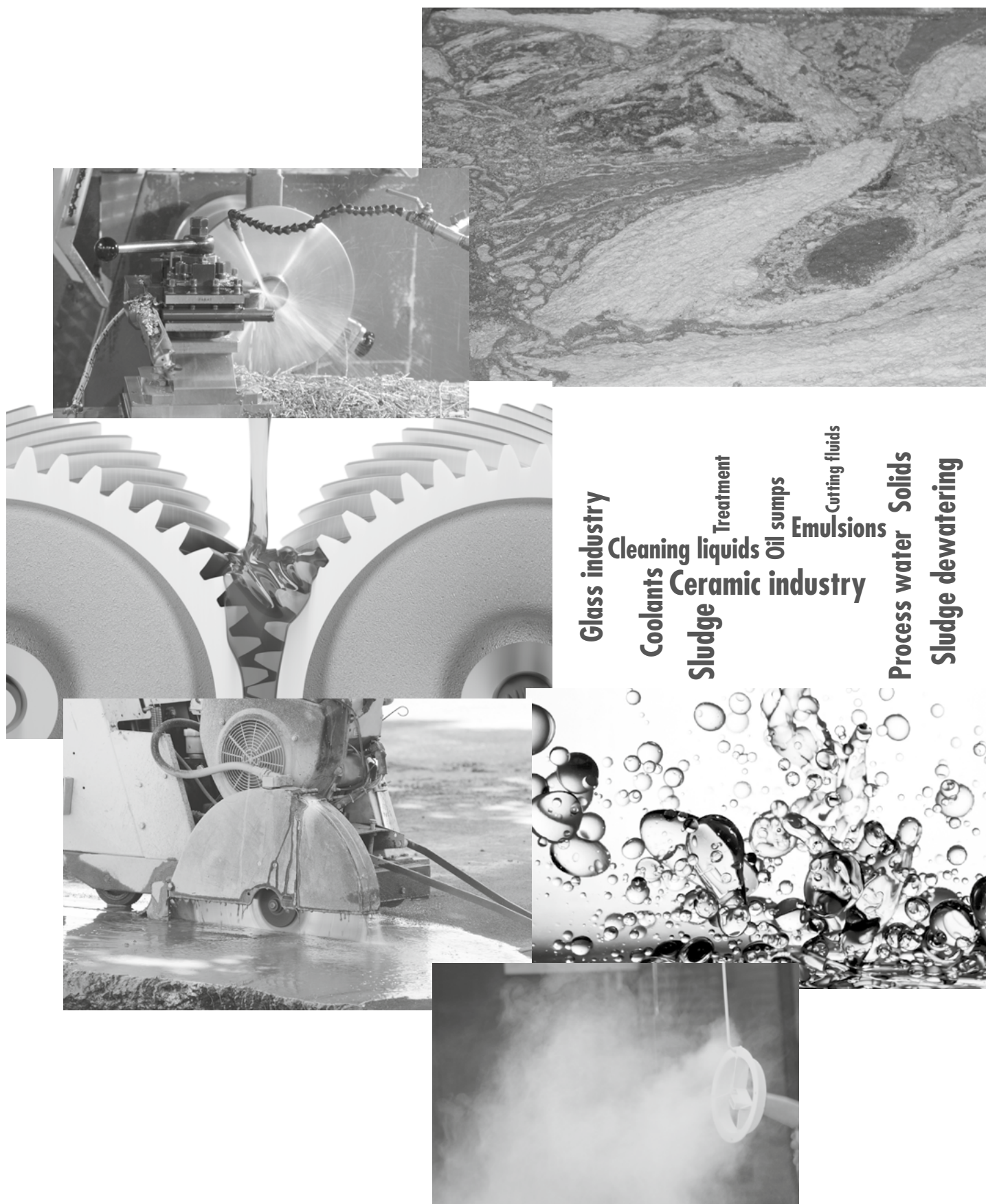
DIN EN ISO 9001 and 50001





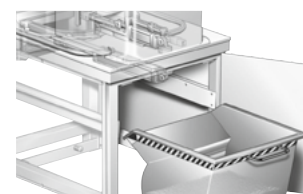
# Fields of application / Cleaning of different kinds of liquids

## Overview



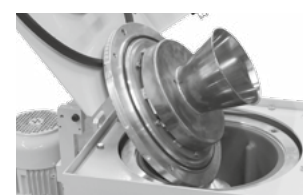
Effective separation of solids from liquids

6



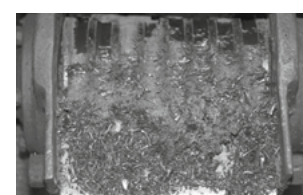
Automatic centrifuges

7



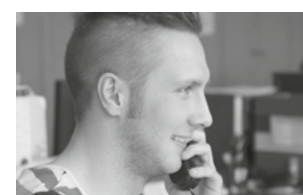
Semi-automatic centrifuges

8 - 9



Peripheral equipment

10



After-Sales-Service

11



# Saving water and protecting the environment!

## „All of us share ecological responsibility“

The Rösler Company has been guided by this golden rule throughout its history. Our centrifugal force filtering equipment help protect the environment.



## Process water treatment continues to grow in importance.

Become a role model...

...clean your liquids and at the same time reduce your water consumption.

# Effective separation of solids from liquids

The technologies utilized for treating process water like coolants, sludge from painting operations and other industrial liquids must not only guarantee an excellent cleaning effect but they must also be economical. With its sturdy and sophisticated centrifuge technology Rösler offers a wide range of cleaning solutions which include numerous technical features which excel with their outstanding cost efficiency.

Any technology for cleaning and recycling of process liquids must overcome significant technical, ecological and economic challenges to meet the prevailing cleanliness standards. The powerful centrifugal filters from Rösler, available with 2- or 3-phase separation, are usable for a wide range of different cleaning tasks and can easily be adapted to specific applications. In the semi-automatic RZ 120 M systems the sludge is manually removed from the rotary drum, whereas the RZ 150 A series features fully automatic sludge removal.

## That's how it works

In some applications the process liquid from the production machine(s) flows directly to the centrifuge, whereas other applications require a pump (lifting) station for transporting the water to the centrifuge. Coarse, solid contaminants are caught by a pre-filter at the inlet of the collection tank. The premature settling of the suspended solids at the bottom of the collection tank is prevented by an integrated electrical stirring device. A compressed air diaphragm pump continuously delivers a constant flow of the process liquid – usually containing solids and oil – into the rotating centrifuge drum. The high rotary drum speed of up to 3,000 RPM produces a centrifugal force that is strong enough to separate very small and light weight solid particles from the liquid phase and deposit them on the drum wall in the form of solid sludge with a residual water content of as low as 20%. Additional filters or cleaning agents are not necessary to meet the specified cleanliness requirements. The liquid now free of solids is caught by a collecting tube placed in the rotary drum and usually transported to a clear water tank. The semi-automatic RZ 120 M series is equipped with a flexible drum basket which allows easy removal of the sludge. The fully automatic centrifuges are equipped with a knife that “peels” the sludge from the inner drum wall and drops it into a container below the drum. Depending on the type of operation one single centrifugal force cleaning system can serve multiple production units, for example several vibratory finishing machines.

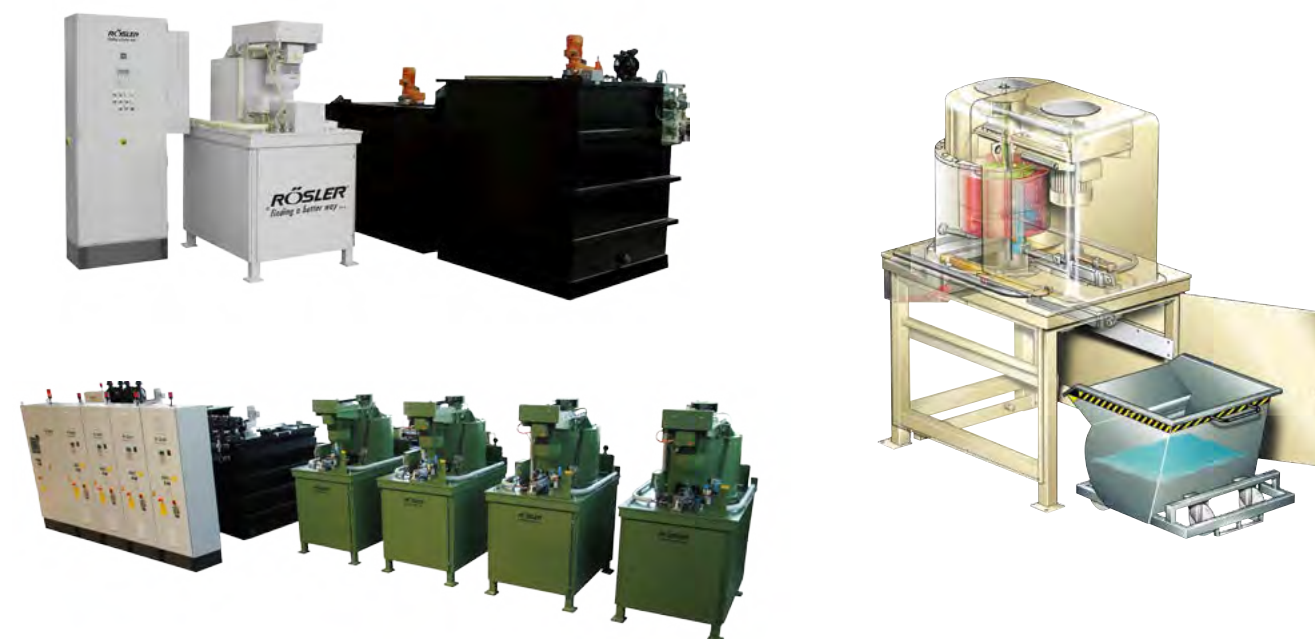
# Automatic centrifuges

To ensure a high separation performance as well as a high reliability and uptime this centrifuge type including all its key components: electric motor, pumps, valves, rotary drum and peeling knife is characterized by its particularly sturdy design. This also includes the maintenance-friendly indirect drive of the rotary drum with special V-belt as opposed to direct drive systems which are prone to premature bearing failures. The rotary drum, with a sludge capacity of up to 30 kg (66 lbs) is available in aluminum or stainless steel. Since it prevents chemical reactions or corrosion of the rotary drum, the stainless steel version is generally utilized for liquids that are acidic or have a high salt content.

Depending on the specified cleanliness requirements and physical limits regarding size and weight of the particles in the liquid, the cleaning rate of the Rösler automatic centrifuges can reach 150 l/min (25 gal/min). The extremely high centrifugal force of up to 2,000 g separates solid particles > 2.0 µm from the liquid phase and deposits them on the inner drum wall as stable sludge. For example, the centrifugal filtering technology contributes to a significantly longer uptime of lubricating coolants, before they must be exchanged. The removal of tiny particles from the processing medium also reduces the risk of bacterial contamination. Depending on the type of industrial application the cleaned process liquids can either be returned to the recycling system or disposed of as waste material.

## Designed for heavy duty operation and easy maintenance

For the automatic sludge discharge from the rotary drum the Rösler engineers developed an innovative technical solution: Whereas in conventional centrifuges the peeling knife, powered by a geared motor, is continuously rotating with the rotary drum, the peeling knife in the Rösler centrifuges is stationary. During the peeling cycle a pneumatic cylinder simply pushes the peeling knife on a linear slide towards the inner drum wall for peeling out the sludge. This system does not place any load on the drum bearings contributing to a significantly longer bearing life. Upon completion of the peeling cycle the inside of the rotary drum is automatically rinsed to flush out any residual sludge. This helps preventing drum imbalances which could lead to premature wear of the drum bearings during subsequent cleaning cycles. All Rösler centrifuges are equipped with an imbalance monitoring system.



RZ 150 A with standard automatic sludge discharge



## Semi-automatic centrifuges

The semi-automatic centrifuges offer excellent cleaning results and their compact, space saving design also allows easy placement close to the processing machine(s). All components, including the centrifuge, the control panel, the process water and clear water tank are pre-assembled, allowing quick on site installation. Centerpiece of the cleaning system is the centrifugal unit designed and built by Rösler. Its robust design allows the treatment of especially aggressive liquids in a wide range of pH values.



Semi-automatic centrifuges

There are sludge baskets (drum inserts) for different applications available

A key technical feature of the semi-automatic centrifuges is the rotary drum speed of 3,000 RPM. The drum is usually made from a special aluminum alloy. Another important feature is the large capacity of the sludge basket allowing a sludge load of 22 kg (48 lbs) before it must be exchanged. With this centrifuge type the collecting tube catching the cleaned liquid in the rotary drum can transfer the liquid either to an adjacent clean water tank or directly to the processing machines in the immediate vicinity. For special applications with aggressive liquids the Rösler centrifuges can be supplied as stainless steel (S304/S316) versions. For use at multiple locations the semi-automatic centrifuges are also available with movable base frame. This allows the cleaning of contaminated industrial liquids from machines at different locations without requiring expensive logistics.



RZ 120 M with process water and clean water tank made of PE, PP and stainless steel



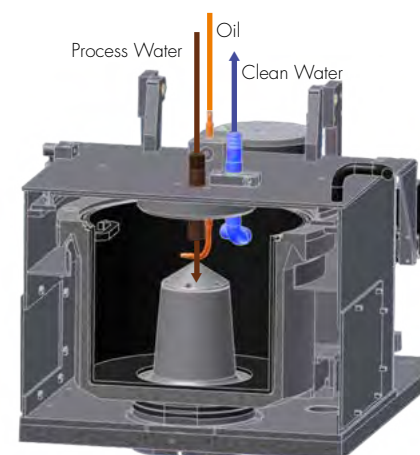
RZ 120 M with process water tank



RZ 120 M-V with movable base frame

## 3-phase centrifuges

The 3-phase centrifuges allow the separation of solid particles and through a second collecting tube they can also separate oil from the process liquid. This is defined as a liquid/liquid/solid separation process. The industrial liquid containing oil and solid particles is fed into the centrifuge at a constant flow rate. Because of the different densities of the 3 "phases" the centrifugal force separates the solids and also the oil from the water. The two separated liquids are caught by two dedicated collecting tubes. The oil is transferred to a special oil tank from where it can be removed periodically and disposed off as waste. The solid sludge is deposited on the inner wall of the sludge basket and is simply removed by emptying the sludge basket at certain time intervals.



Cross-section of a 3-phase centrifuge



RZ 120 M-PT for 3-phase separation including process water tank made from steel



Equipped with 2 extraction pipes



## Peripheral equipment

### Different Process Water Tanks



stainless steel



polypropylene



polyethylene

Process water tanks made of polyethylene, polypropylene or steel/ stainless steel - available in many volumes.

### Systems for discarding coarse particles

#### Magnetic separators

For the removal of coarse ferritic particles from the industrial liquids.



#### Sludge scrapers

For removal of large sludge quantities. The sludge is removed from the enclosed sludge bin with an angled, endless chain system with mounted scraper blades driven by a geared motor.



### Systems for cooling industrial liquids

Cooling of process water or other liquids is frequently required to ensure a stable recycling process and to prevent premature wear.



## After-Sales-Service

With our wide range of technical resources we can provide competent and professional support regarding all your process water treatment problems and questions:



### 24/7 all-round, one stop technical support!

- ▶ Experienced and highly qualified team of process engineers
- ▶ Support with any process problems and questions
- ▶ Numerous test centers around the world
- ▶ Global network of branches with chemical laboratories for analyzing process liquids
- ▶ 24 hour hot line – round the clock problem solving capability
- ▶ Timely wear and spare parts service
- ▶ Tailor made maintenance contracts
- ▶ Training programs for operators and maintenance personnel
- ▶ Technical upgrades and/or relocation of existing equipment
- ▶ Support in ensuring compliance with legal requirements
- ▶ In Germany: Protective earth conductor tests (in line with EN 60204-1 / VDE 0113)
- ▶ In Germany: Periodical controls of production materials in line with Betr.Sich.V. (formerly „UVV controls“)



### Maintenance and repair service

Our qualified service team stands ready to serve you at any time, be it for an emergency, a repair or a planned maintenance.

With our short response times and well equipped service vehicles we can quickly repair and maintain your equipment on site.



#### Germany

**RÖSLER Oberflächentechnik GmbH**  
Werk Memmelsdorf  
Vorstadt 1  
D-96190 Untermerzbach  
Tel.: +49/9533/924-0  
Fax: +49/9533/924-300  
info@rosler.com

**RÖSLER Oberflächentechnik GmbH**  
Werk Hausen  
Hausen 1  
D-96231 Bad Staffelstein  
Tel.: +49/9533/924-0  
Fax: +49/9533/924-300  
info@rosler.com

#### USA

**RÖSLER Metal Finishing USA, L.L.C.**  
1551 Denso Road  
USA-Battle Creek  
MI 49037  
Tel.: +1/269/4413000  
Fax: +1/269/4413001  
rosler-us@rosler.com

#### France

**RÖSLER France**  
Z.I. de la Fontaine d'Azon  
CS 50513 - St. Clément  
F-89105 Sens Cedex  
Tel.: +33/3/86647979  
Fax: +33/3/86655194  
rosler-fr@rosler.com

#### Italy

**RÖSLER Italiana S.r.l.**  
Via Elio Vittorini 10/12  
I-20863 Concorezzo (MB)  
Tel.: +39/039/611521  
Fax: +39/039/6115232  
rosler-it@rosler.com

#### Switzerland

**RÖSLER Schweiz AG**  
Staffelbachstrasse 189  
Postfach 81  
CH-5054 Kirchleerau  
Tel.: +41/62/7385500  
Fax: +41/62/7385580  
rosler-ch@rosler.com

#### Spain

**RÖSLER International GmbH & Co. KG**  
Sucursal en España  
Polg. Ind. Cova Solera C/Roma, 7  
E-08191 Rubí (Barcelona)  
Tel.: +34/93/5885585  
Fax: +34/93/5883209  
rosler-es@rosler.com

#### Netherlands

**RÖSLER Benelux B.V.**  
Reggestraat 18  
NL-5347 JG Oss  
Postbus 829  
NL-5340 AV Oss  
Tel.: +31/412/646600  
Fax: +31/412/646046  
rosler-nl@rosler.com

#### Belgium

**RÖSLER Benelux B.V.**  
Avenue de Ramelot 6  
Zoning Industriel  
B-1480 Tubize (Saintes)  
Tel.: +32/2/3610200  
Fax: +32/2/3612831  
rosler-be@rosler.com

#### Austria

**RÖSLER Oberflächentechnik GmbH**  
Helmanekgasse 15  
A-1230 Wien  
Tel.: +43/1/6985180-0  
Fax: +43/1/6985182  
rosler-at@rosler.com

#### Romania

**RÖSLER Romania SRL**  
Str. Avram Iancu 39-43  
RO-075100 Otopeni/ILFOV  
Tel.: +40/21/352 4416  
Fax: +40/21/352 4935  
rosler-ro@rosler.com

#### Serbia

**RÖSLER D.o.o**  
Dr. Ivana Ribara 32  
SRB-11070 Novi Beograd  
Tel.: +381 11 3184407  
rosler-rs@rosler.com

#### Great Britain

**RÖSLER UK**  
Unity Grove, School Lane  
Knowsley Business Park  
GB-Prescot, Merseyside L34 9GT  
Tel.: +44/151/4820444  
Fax: +44/151/4824400  
rosler-uk@rosler.com

#### Russia

**RÖSLER Russland**  
Borovaya Str. 7, bldg. 4, office 107  
111020 Moscow  
Tel. / Fax: +7 / 495 / 247 55 80  
rosler-ru@rosler.com

#### Brazil

**RÖSLER Otec do Brasil LTDA**  
Estrada dos Galdinos 35  
Jd. Barbacena  
06700-000 - Cotia  
São Paulo - Brasil  
Tel.: +55/11/46123844  
Fax: +55/11/46123845  
info@rosler-otec.com.br

#### China

**RÖSLER - BEIJING**  
Office 11N, Tower A, Beijing Fu Hua Mansion  
No. 8, Chaoyangmen North Avenue  
Dong Cheng District  
Beijing 100027 P.R. China  
Tel.: +86/10/6554 73 86  
Tel.: +86/10/6554 73 89  
Fax: +86/10/6554 73 87  
rosler-cn@rosler.com

#### India

**RÖSLER SurfaceTech Pvt. Ltd.**  
Pune Factory No: A-29, Chakan MIDC-Phase 2  
Pune-410501  
Tel.: +91/2135/690202

Bangalore Office No: 9, Main Road. RT Nagar  
Bangalore-560032  
Tel.: +91/80 23534445  
Fax: +91/80 23339165  
info@rosler.net.in

- and more than 156 representations worldwide

