

DR4

Automatic water slot router



	A (mm)	B (mm)	C (mm)	Kg
	1600	1000	1600	200

DR4

Automatic water slot router

Technical specifications

Four selectable motors with automatic drive

Wide & fast adjustments possibilities for inclination, longitudinal & transversal regulation of the motors, in order to machine whatever profile type

Adjustment by means of revolvers with 6 position, to allow You nr.6 different position for each regulation

The 0 point in the inner part of the profile. This way, in a same series, the position of the 45° (adjustable angle) front motor remains unvaried, thereby allowing high machining speed. Furthermore, thanks to the conceived profile positioning, if you have profiles of different heights, by regulating the machine on the higher series and fitting compensation shims for the lower ones, the position of the motors need not be changed

The use of indexed references for the angular adjustment of front head positioning

Fitting nr. 2 front motors, you can machine a bar with just one single manual movement. Finally, to ensure the quick angular adjustment of the parallel front heads, indexed references are fitted

Voltage: 220V, N + T + L1

Motors: 20000 rpm - 600 W x 4

Power consumption: 1,2 kW

Working pressure: 8 bar

Air consumption: 6 L./Cycle

Standard accessories

N.	Description
4	<i>Cutterr</i>
2	<i>Profile support arms</i>

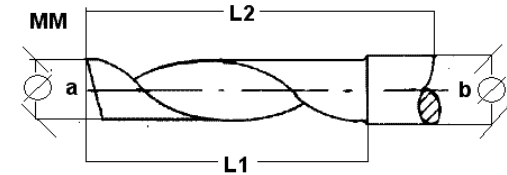
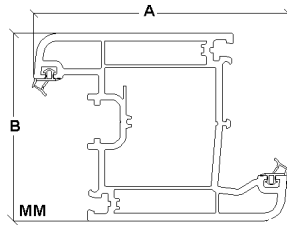
DR4

Automatic water slot router

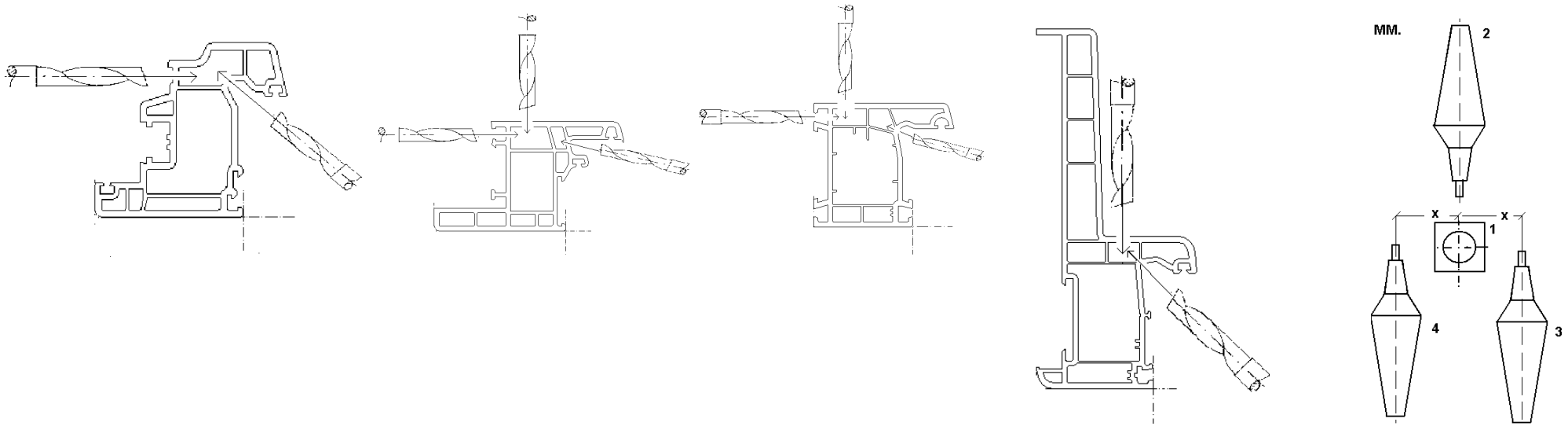
Working capacity

A max = 140
B max = 180

$\emptyset a = 5$ | L 2 = 60 / 80 / 100
 $\emptyset b = 8$ | L 1 = 15 / 45



X = 80



DR4

Automatic water slot router



I dati e le immagini di questo documento sono forniti a titolo indicativo, pertanto Profteq si riserva il diritto di apportare senza preavviso modifiche in qualsiasi momento, per ragioni di natura tecnica o commerciale.

profteQ S.r.l.
*made in Italy evolution on
PVC windows*

35010 Villa Del Conte - PD
Via dell'Artigianato II, 28
Italy

Tel. +39.049.9325691
+39.049.9325619
Fax. +39.049.9325232

www.profteq.it
www.fom-group.com
info@profteq.it