



TSC
The Smarter Choice.

The Smarter Choice for
**LABEL
PRINTERS**

/// www.tscprinters.com





THE SMARTER CHOICE

Top 5 global barcode printer manufacturer
5 million barcode printers installed worldwide
3 decades of delivering reliable & affordably printers

At TSC Auto ID Technology Co., Ltd. (TSC) we specialize in the research and development, manufacture and marketing of barcode printers. Our commitment to product quality is recognized by our loyal customer base and partner network around the world and has solidified our reputation as a world class barcode printer manufacturer. Whether it is desktop, industrial, mobile barcode printers or print engines and color printers, as well as its accessories and supplies, TSC products stand out for their user-friendly design, stable operation and rugged durability. We are convinced that only excellent quality and dedicated service will earn lasting trust and praise from customers. Our dedication to our customers' satisfaction and success is what drives the growth of TSC.

- One of the best price-performance values in the marketplace.
- Standard two-year warranty on our thermal barcode printers, which is a testimony to the durable design and construction of our products.
- Top-of-the-line support for resellers and end-users from a can-do engineering and sales-support organization.
- TSC operates its own manufacturing facilities, which gives the flexibility to meet special engineering challenges that outsourced operations simply can't handle.
- Dedication to new product development provides resellers with a growing selection of innovative solutions designed to meet every thermal label printing needs a customer may have.
- Product customization & integration ensures smooth system installation.
- Every printer is given two 100% inspections to ensure perfect quality and reliability.



MANUFACTURING

Reduce human error, optimize production

From material tracking to production process management and inventory control, barcode management systems can accurately integrate all information effectively reducing costly human mistakes while raising production capacity and product quality.



WAREHOUSE & LOGISTICS

Improve logistics control procedures, enhance operational performance

From item marking and pallet labeling to inventory control and distribution, TSC logistics solutions will help you track goods throughout the supply chain. Using our barcode solutions, you can accurately identify inventory throughout your storage, handling, and distribution processes.



RETAIL

Simplify work flow processes

Whether it's tracking products, managing inventory, printing receipts, changing price tags or affixing special labels, TSC's sleek line of retail systems is designed to meet every such need a customer may have. Run your store faster and more efficiently, while boosting employee productivity, increasing margins through lower costs, and delivering top notch customer service.



HEALTHCARE

Greater medical safety through real-time access to correct case information

The barcode identification system reduces patient identification errors and ensures accurate tracking and management of patient medical records. Focus more time saving a patient's life and utilize all resources with one of our many printing solutions.



ENTERTAINMENT & HOSPITALITY

Simple interface streamlines ticketing and order taking

Compact, user friendly, and loaded with standard features, our line of printers is ideal for creating admission tickets, loyalty cards, VIP passes, coupons, event wristbands, shuttle bus tickets, and other entertainment-related media. Our printers support a variety of label styles, backgrounds and graphics to help create personalized tickets. Confidential information can also be added to prevent double-issuing and forgery of tickets.



CUSTOM SIGNAGE

High-performance labeling devices, easy solutions for custom needs

Whether warning or caution signage, regulatory labeling, container labeling, printing multiple rows of small labels, or even automatic labeling, the TSC product series has a solution for your specific needs.



TSC INDUSTRIAL LABEL PRINTERS: THE STRONGER CHOICE

Superior Price-Performance and Durability

Whether you're tracking materials on the assembly line or through the supply chain, TSC industrial label printers ensure precise end-to-end identification, resulting in improved quality control and significant cost savings. Built to last, our industrial printers feature a heavy-duty steel enclosure and internal assembly designed for extended high-volume use in industrial environments. They are rugged, dependable and designed to operate in cramped work areas where space is at a premium.

With their superior price-performance and reputation for durability, our printers have become popular around the world for hundreds of thousands of customers who realize that TSC is truly "The Smarter Choice" for their industrial labeling needs.

APPLICATIONS BY PRINTER MODEL – THERMAL TRANSFER INDUSTRIAL PRINTERS

	ML240P SERIES	MB240 SERIES	MH240 SERIES	MX240P SERIES	TTP-2610MT SERIES	TTP-286MT SERIES
Warehousing & distribution	*	*	*	*		
Shelf & rack labeling	*	*	*	*	*	*
Industrial-duty printing			*	*		
Healthcare patient safety	*		*			
Compliance labeling	*	*	*	*	*	*
Work-in-process	*	*	*	*		
Ticketing	*		*	*		
Shipping & receiving		*	*	*		
Inventory management				*	*	*
Custom signage					*	*
Graphics, logos and texts					*	*

THERMAL TRANSFER INDUSTRIAL PRINTERS

INDUSTRIAL

- **MX240P SERIES – STRONG PERFORMANCE FOR HIGH VOLUME LABEL PRINTING.** Designed and built to handle your essential labeling needs where failure or disruption is not an option. The MX240P features the rugged components and one of industry best high speed performances handle the most important small and large 24x7 volume applications. Unique specifications include a 600-meter ribbons capacity, standard multiple connectivity interfaces including two USB hosts for keyboards, scanners and scales support, large addressable space for memory storage and the ability to print high quality tiny (3 mm height) labels.

KEY FEATURES

- Heavy duty die-cast aluminum design
- Fast 536 Mhz processor
- 4.3" color LCD with 6-button menus and touch panel operation
- Up to 457 mm (18") per sec. print speed



Model	Resolution	Max. Print Width	Max. Print Length	Max. Print Speed	Dimensions (W x H x D)	Weight
MX240P	203 DPI	4.09"	1,000"	18 IPS	300 mm x 393 mm x 510 mm 11.81" x 15.47" x 20.08"	18 kg
MX340P	300 DPI	4.09"	450"	14 IPS		
MX640P	600 DPI	4.09"	100"	6 IPS		

- **MH240 SERIES – FAST, HIGH VOLUME PRINTING FEATURING SOPHISTICATED DATABASE CONNECTIVITY.** Within the MH240 Series are 9 models designed to fit your enhanced print quality and high speed printing needs. The exclusive SSC (Setting Security Control) offers complete setting control, to prevent accidental and undesired changes. The new GUI is designed to deliver a large amount of data to the user in a quick and efficient manner making the MH240 Series one of the simplest and most informative midrange printers on the market.

KEY FEATURES

- Easy to operate with the new GUI design on color touch display (except basic model)
- 3.5" color LCD with 6-button control for standard model or 4.3" color touch LCD panel with 6-button control for advanced and premium model
- Includes 8" OD full roll internal rewinder (Only on MH240P/MH340P/MH640P)
- Small label peel off - Up to 0.5 inch length (MH240/MH340/MH640 and MH240T/MH340T/MH640T)



Model	Resolution	Max. Print Width	Max. Print Length	Max. Print Speed	Dimensions (W x H x D)	Weight
MH240/MH240T	203 DPI	4.09"	1,000"	14 IPS	276 mm x 326 mm x 502 mm 10.87" x 12.83" x 19.76"	15 kg
MH340/MH340T	300 DPI	4.09"	450"	12 IPS		
MH640/MH640T	600 DPI	4.09"	100"	6 IPS		
MH240P	203 DPI	4.09"	1,000"	14 IPS	276 mm x 412 mm x 502 mm 10.87" x 16.22" x 19.76"	18 kg
MH340P	300 DPI	4.09"	450"	12 IPS		
MH640P	600 DPI	4.09"	100"	6 IPS		

- **MB240 SERIES – SMALL FOOTPRINT, BIG IMPACT.** It's compact design, quiet operation and fast label throughput is equally at home in the office or shop floor. Built on an all metal construction and die-cast aluminum print mechanism to withstand tough production environments. The MB240 features a small footprint, easily understood operator interface and a full set of options to meet nearly every printing application.

KEY FEATURES

- 3.5" intuitive color touch display
- Flexible & advanced TPH mechanism
- One step to quick setup/update



Model	Resolution	Max. Print Width	Max. Print Length	Max. Print Speed	Dimensions (W x H x D)	Weight
MB240	203 DPI	4.21"	1000"	10 IPS	248 mm x 274 mm x 436 mm 9.76" x 10.79" x 17.17"	9 kg
MB340	300 DPI	4.16"	450"	7 IPS		
MB240T	203 DPI	4.21"	1000"	10 IPS		9.2 kg
MB340T	300 DPI	4.16"	450"	7 IPS		



- **ML240P SERIES – SIMPLICITY AND AGILITY JUST ONE STEP AWAY.** Its compact footprint is perfect for crowded work environments and features ease of use, intuitive color GUI display, noise-reduced printing, and self-diagnostic TPH Care.

KEY FEATURES

- Robust and agile design for optimal quality
- Engineered to reduce noise from printing
- Self-Diagnostic TPH care mechanism
- 2.3" color GUI display and intuitive indicator



Model	Resolution	Max. Print Width	Max. Print Length	Max. Print Speed	Dimensions (W x H x D)	Weight
ML240P	203 DPI	4.25"	1,000"	6 IPS	248 mm x 245 mm x 330 mm 9.76" x 9.65" x 12.99"	7.6 kg
ML340P	300 DPI	4.16"	450"	5 IPS		

WIDE WEB

- **TTP-2610MT SERIES – EASY TO OPERATE WIDE WEB THERMAL TRANSFER PRINTER.** TSC's answer for 6 inch wide format compliance labels, product identification labels, and pallet shipping/receiving labels. Two models are available to match the resolution and speed you need for your wide web labeling applications.

KEY FEATURES

- 4.3" color LCD with 6-button menus and touch panel operation
- High quality die-cast aluminum design
- Ethernet, USB 2.0, serial and parallel connectivity are standard
- USB host for stand-alone or data entry at print site



Model	Resolution	Max. Print Width	Max. Print Length	Max. Print Speed	Dimensions (W x H x D)	Weight
TTP-2610MT	203 DPI	6.61"	580"	12 IPS	355 mm x 337 mm x 520 mm 13.98" x 13.27" x 20.47"	23 kg
TTP-368MT	300 DPI	6.61"	260"	10 IPS		

- **TTP-286MT SERIES – 8.6" WIDE-FORMAT THERMAL TRANSFER PRINTER.** Ideally suited for compliance labeling, brand marketing, inventory control, drum labeling, warning signs and a host of other signage solutions. Two models are available to match the resolution and speed you need for your wide web labeling applications.

KEY FEATURES

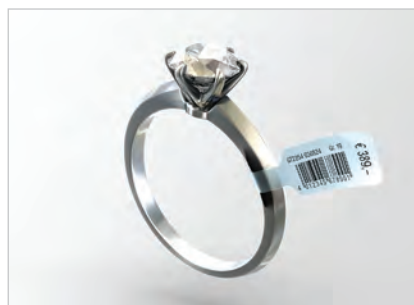
- Die-cast chassis, sheet metal structure with clear media view window
- Can manage label widths up to 9.5" with a maximum print width up to 8.64" wide at 300 dpi high resolution
- 600 meter ribbon supply



Model	Resolution	Max. Print Width	Max. Print Length	Max. Print Speed	Dimensions (W x H x D)	Weight
TTP-286MT	203 DPI	8.5"	450"	6 IPS	440 mm x 336 mm x 514 mm 17.32" x 13.23" x 20.24"	23.7 kg
TTP-384MT	300 DPI	8.64"	200"	4 IPS		



COMMITMENT TO CUSTOMER APPLICATIONS





TSC PRINT ENGINE

Automation and Simple Integration

Equipped for years of reliability, ease of use, and cost-conscious serviceability, the PEX-1000 is an ideal solution for heavy duty print and apply applications where downtime is not an option. The rugged PEX-1000 offers simple integration into both new and existing label application installations.

APPLICATIONS BY PRINTER MODEL – THERMAL TRANSFER PRINT ENGINE

	PEX-1000 SERIES
Automotive	★
Food & Beverage	★
Pallet Labeling	★
Carton Shipping	★
Pharmaceutical labeling	★



4" WIDE

- **PEX-1000 SERIES – IGNITING OUTPUT WITH CURRENTLY ONE OF THE FASTEST PRINT ENGINES.** It combines a precision print mechanism with high performance electronics to produce labels at up to 18 inches per second. It is ideal for manufacturing and logistic applications where high speed and high demand label printing is required.

KEY FEATURES

- High print speed up to 18 ips
- High precision label registration supports labels as small as 5 mm in height
- Easily mount the print engine into the current applicator and support print language emulation

Model	Resolution	Max. Print Width	Max. Print Length	Max. Print Speed	Dimensions (W x H x D)	Weight
PEX-1120 (LH)	203 DPI	4.09"	1,000"	18 IPS	245 mm x 300 mm x 390 mm 9.65" x 11.81" x 15.35"	13 kg
PEX-1220 (RH)	203 DPI	4.09"	1,000"	18 IPS		
PEX-1130 (LH)	300 DPI	4.09"	450"	14 IPS		
PEX-1230 (RH)	300 DPI	4.09"	450"	14 IPS		
PEX-1160 (LH)	600 DPI	4.09"	100"	6 IPS		
PEX-1260 (RH)	600 DPI	4.09"	100"	6 IPS		

TSC COLOR LABEL PRINTER

Creativity Meets Flexibility for On Demand Color Printing

The CPX4 Series is a hassle-free solution for businesses that want the flexibility to design and print color labels on demand. The CPX4 Series can eliminate the cost of preprinted labels and provide the option to produce short run labels. The CPX4 Series consists of a pigment and dye version, CPX4P and CPX4D, allowing for customized color labels to suit any application, including printing GHS compliant labels.

APPLICATIONS BY PRINTER MODEL – DIGITAL COLOR LABEL PRINTER

	CPX4 SERIES
Office/School	*
Entertainment	*
Manufacturing	*
SMBs	*
Food & Beverage	*
Healthcare	*
Logistics	*
Retail	*



4" WIDE

- **CPX4 SERIES – COLORIZE YOUR BUSINESS, EXPAND YOUR VISION.** The CPX4 Series is an advanced digital label printing solution, allowing for customized label design using pigment-or dye-based inks with astonishing resolution quality at fast printing speed. It is a perfect fit for any application requiring vivid images on high quality labels.

KEY FEATURES

- Excellent resolution of 1200 x 1200 dpi in vivid color, crisp image and sharp text
- The adjustable media is capable of printing small labels 25.4 mm (width) x 6 mm (length)
- Capable of delivering GHS-compliant label and fulfill industry requirements
- TSC Color Management Program – TSC Color Matching Service, allows for colors that are clear and accurate

Model	Ink Type	Resolution	Max. Print Width	Max. Print Length	Max. Print Speed	Dimensions (W x H x D)	Weight
CPX4P	Pigment	1200 x 1200 DPI	4.17"	15.63"	11.8 IPS	386 mm x 394 mm x 570 mm 15.20" x 15.51" x 22.44"	25.5 kg
CPX4D	Dye	1200 x 1200 DPI	4.17"	15.63"	11.8 IPS		





TSC DESKTOP LABEL PRINTERS

More Features, More Speed, Higher Reliability

If you're in the market for a desktop label printer that offers you more features and performance for the price, you'll quickly discover TSC's products. We offer a wide range of printers with multiple standard features tailor-made for almost any desktop application – from patient ID bracelets, shelf labels and event wristbands to voter ID cards, and postal delivery labels.

You'll enjoy the benefits of a printer that is not only rugged, reliable and economical, but also easy to set up, load and operate. Compare our printers with other brands, and you'll discover what hundreds of thousands of others already have learned: TSC is clearly one of **"The Smartest Choices"** for a wide range of desktop labeling applications.

APPLICATIONS BY PRINTER MODEL – DIRECT THERMAL DESKTOP PRINTERS

	TDP-225 SERIES	TDP-324W SERIES	DA210/DA220 SERIES	TDP-247 SERIES
Retail POS	*		*	*
Shelf labeling	*		*	*
Product marking	*			*
Healthcare patient safety	*	*		*
Inventory/asset management	*			*
Office applications (mailings, file-folder labeling)	*		*	*
Shipping	*		*	*
Event admissions		*		
High resolution print & graphics				*
Food ingredient marking	*			*
Document management	*		*	*
Receipt/coupon printing	*		*	*

DIRECT THERMAL DESKTOP PRINTERS

2" WIDE

- **TDP-225 SERIES – SMALL DIRECT THERMAL LABEL AND RECEIPT PRINTER WITH BIG FEATURES.** Deliver high speed 2-inch-format direct thermal labels and receipts that are crisp and clear. It's ideal for retail and other labeling applications.

KEY FEATURES

- High quality double-walled clamshell design
- Up to 127 mm (5") per second print speed
- Serial and USB 2.0 connectivity



Model	Resolution	Max. Print Width	Max. Print Length	Max. Print Speed	Dimensions (W x H x D)	Weight
TDP-225	203 DPI	2.13"	90"	5 IPS	109 mm x 171 mm x 209 mm 4.29" x 6.73" x 8.23"	1.2 kg
TDP-324	300 DPI	1.89"	40"	4 IPS		

- **TDP-324W SERIES – DIRECT THERMAL WRISTBAND PRINTER.** One of the most cost effective, simple to use, solutions for printing medical, government and entertainment wristbands.

KEY FEATURES

- Designed to hold 6.5" OD wristbands
- Front LCD display
- Ethernet and USB 2.0 connectivity



Model	Resolution	Max. Print Width	Max. Print Length	Max. Print Speed	Dimensions (W x H x D)	Weight
TDP-225W	203 DPI	2.05"	90"	5 IPS	109 mm x 210 mm x 260 mm 4.29" x 8.27" x 10.24"	1.2 kg
TDP-324W	300 DPI	1.89"	40"	4 IPS		

4" WIDE

- **DA210/DA220 SERIES – COMPACT DESIGN DIRECT THERMAL DESKTOP SOLUTION.** Our most versatile and affordable direct thermal desktop printer consists of 4 models designed to provide the right fit for your application at an affordable price.

KEY FEATURES

- High quality double walled clamshell design
- Up to 152.4 mm (6") per second print speed
- Spring loaded media holder
- 5" OD media capacity



Model	Resolution	Max. Print Width	Max. Print Length	Max. Print Speed	Dimensions (W x H x D)	Weight
DA210	203 DPI	4.25"	110"	6 IPS	172 mm x 165 mm x 195 mm 6.77" x 6.50" x 7.68"	1.5 kg
DA310	300 DPI	4.16"	40"	4 IPS		
DA220	203 DPI	4.25"	1,000"	6 IPS		
DA320	300 DPI	4.16"	450"	4 IPS		

- **TDP-247 SERIES – ONE OF OUR BEST COMPACT DIRECT THERMAL DESKTOP PRINTER.** High performance at an affordable price. The TDP-247 uses high technology printheads, motors and power supplies to deliver one of the world's fastest, most reliable and long-lived direct thermal desktop printer.

KEY FEATURES

- Up to 177.8 mm (7") per second print speed
- Drop-in media loading
- 5" OD internal media supply, optional external media holder supports 8.4" OD label rolls on 1" or 3" cores



Model	Resolution	Max. Print Width	Max. Print Length	Max. Print Speed	Dimensions (W x H x D)	Weight
TDP-247	203 DPI	4.25"	90"	7 IPS	200 mm x 164 mm x 240 mm 7.87" x 6.46" x 9.45"	1.9 kg
TDP-345	300 DPI	4.17"	40"	5 IPS		



2" WIDE

- **TTP-225 SERIES – 2 INCH THERMAL TRANSFER DESKTOP PRINTER.** Small space saving design uses industry standard ribbons and media.

KEY FEATURES

- Small size – space saving design
- Easy media loading
- High quality double walled clamshell design

Model	Resolution	Max. Print Width	Max. Print Length	Max. Print Speed	Dimensions (W x H x D)	Weight
TTP-225	203 DPI	2.13"	90"	5 IPS	140 mm x 177 mm x 241 mm 5.5" x 6.97" x 9.5"	2.45 kg
TTP-323	300 DPI	2.13"	40"	3 IPS		

4" WIDE

- **TX200 SERIES – HIGH PERFORMANCE FOR A NEW GENERATION.** The TX200 Series desktop label printers deliver industrial printer type of performance in a desktop printer package. TSC uses better print heads, motors and power supplies than currently many other models in its segment to deliver one of the world's fastest, most reliable and long-lasting thermal transfer desktop printer. With 203, 300 and 600 dpi resolutions available, the TX200 provides a solution for everything from high volume 4x6 shipping labels to the smallest high-resolution electronic marking applications.

KEY FEATURES

- Large memory capacity – 128 MB Flash and 128 MB SDRAM
- Label capacity up to 127 mm (5") OD
- Up to 203 mm (8") per second print speed
- 3.5" color TFT Display (Standard for TX600, Optional for TX200 & TX300)
- USB host interface for stand-alone application

Model	Resolution	Max. Print Width	Max. Print Length	Max. Print Speed	Dimensions (W x H x D)	Weight
TX200	203 DPI	4.25"	1,000"	8 IPS	226 mm x 198 mm x 332 mm 8.90" x 7.80" x 13.07"	3.75 kg
TX300	300 DPI	4.17"	450"	6 IPS		
TX600	600 DPI	4.17"	100"	4 IPS	226 mm x 200 mm x 332 mm 8.90" x 7.87" x 13.07"	4.08 kg



- **TC SERIES – THE HIGH-PERFORMANCE SMALL FOOTPRINT THERMAL TRANSFER DESKTOP.** Durable, reliable and fast, the TC series generates 4-inch-wide labels, tags or receipts at fast speeds, offering high performance at an affordable price. Uses industry standard ribbons on half-inch notched cores. 4 different models are available including versions with color LCD displays in both 203 and 300 dpi resolutions.

KEY FEATURES

- Multiple interfaces: Ethernet, USB, USB host, parallel, and serial
- Rugged double wall construction
- Use standard 0.5" notched core ribbons

Model	Resolution	Operation	Max. Print Width	Max. Print Length	Max. Print Speed	Dimensions (W x H x D)	Weight
TC200	203 dpi	1 button, 1 tricolor LED	4.25"	90"	6 IPS	203 mm x 191.5 mm x 259.3 mm 7.99" x 7.54" x 10.21"	2.2 kg
TC300	300 dpi		4.15"	40"	4 IPS		
TC210	203 dpi	6 buttons, color LCD display	4.25"	1,000"	6 IPS		2.3 kg
TC310	300 dpi		4.15"	450"	4 IPS		

- **TE200 SERIES – SUPERIOR, FAST PERFORMANCE, FEATURING LEGENDARY TSC DURABILITY.** TE200 Series provides customers throughout the world with a competitive, durable, entry-level desktop printer that is both versatile and easy-to-use. With an easy to load print mechanism and an Energy Star 2.0 rating, the TE200 Series is extremely energy efficient. The printer will take both, 1/2" core 72 meter to 110 meter, or 1" core 300 meter thermal transfer ribbons allowing customer to use whichever supply of ribbons they have available.

KEY FEATURES

- Multiple interfaces: Ethernet, USB, USB host, and serial (for TE210 & TE310)
- 5" OD internal media supply, optional external media holder supports 8.4" OD
- Print mechanism for kiosk applications

Model	Resolution	Max. Print Width	Max. Print Length	Max. Print Speed	Dimensions (W x H x D)	Weight
TE200	203 DPI	4.25"	110"	6 IPS	204 mm x 164 mm x 280 mm 8.03" x 6.46" x 11.02"	2.4 kg
TE300	300 DPI	4.16"	40"	5 IPS		
TE210	203 DPI	4.25"	1,000"	6 IPS		2.5 kg
TE310	300 DPI	4.16"	450"	5 IPS		



THERMAL TRANSFER DESKTOP PRINTERS

APPLICATIONS BY PRINTER MODEL – THERMAL TRANSFER DESKTOP PRINTERS

	TTP-225 SERIES	TTP-243 PRO SERIES	TC SERIES	TE200 SERIES	TTP-247 SERIES	TX200 SERIES
Retail POS	*		*	*		
Shelf labeling	*	*		*	*	*
Product marking	*	*	*	*	*	*
Healthcare patient safety	*	*	*	*	*	*
Inventory/asset management	*		*		*	*
Office applications (mailings, file-folder marking)	*			*		
Shipping		*	*	*	*	*
Event admissions	*					
High resolution print & graphics			*	*	*	*
Oil change/auto service labeling	*			*		
Patient safety & pharmacy prescription labeling	*		*	*	*	*
Compliance labeling		*	*	*	*	*
Asset tracking		*	*		*	*
Inventory control		*	*	*	*	*
Document management		*	*		*	*
Receipt/coupon printing	*		*			

- **TTP-247 SERIES – ONE OF THE WORLD'S BEST THERMAL TRANSFER DESKTOP PRINTER.** Based on TSC's dual motor design featuring 300 meter ribbon capacity, the TTP-247 Series desktop label printers deliver industrial printer type of performance in a desktop printer package. TSC uses better print heads, motors and power supplies to deliver a faster, more reliable and long-lasting thermal transfer desktop printer.

KEY FEATURES

- Uses 300 meter ribbons
- Dual-motor gear-driven design
- Up to 177.8 mm (7") per second print speed



Model	Resolution	Max. Print Width	Max. Print Length	Max. Print Speed	Dimensions (W x H x D)	Weight
TTP-247	203 DPI	4.25"	90"	7 IPS	213 mm x 188 mm x 314 mm 8.39" x 7.40" x 12.36"	2.8 kg
TTP-345	300 DPI	4.17"	40"	5 IPS		

- **TTP-243 PRO SERIES – 300 METER RIBBON THERMAL TRANSFER DESKTOP PRINTER.** TSC's original TTP-243 series desktop printers earned a reputation as one of the toughest, most durable printer in its class. The TTP-243 Pro Series incorporates the same features, plus brand-new state-of-the-art electronics, packing even more performance into an entry-level platform.

KEY FEATURES

- Dual-motor print engine
- Ribbon capacity up to 300 m (984 feet)
- Label capacity up to 214 mm (8.4") OD



Model	Resolution	Max. Print Width	Max. Print Length	Max. Print Speed	Dimensions (W x H x D)	Weight
TTP-243 PRO	203 DPI	4.09"	90"	3 IPS	232 mm x 156 mm x 288 mm 9.13" x 6.14" x 11.34"	2.5 kg
TTP-342 PRO	300 DPI	4.09"	40"	2 IPS		
TTP-243E PRO	203 DPI	4.09"	90"	3 IPS		



TSC MOBILE PRINTERS

Mobile Solutions Made Easy

TSC offers intelligently designed on the go mobile printing solutions to meet most demanding market needs.



■ ALPHA-2R – SMALL AFFORDABLE MOBILE PRINTER.

Alpha-2R is a comfortable, user-friendly, light-weight printer capable of working with any mobile printing application where you need access to quick, simple receipts or tickets. It is designed for rough environments, withstanding a 5ft drop or 6.5ft drop with the optional protective case. The Alpha-2R can connect via wired or wireless communication making it an easy to print and scan anywhere.

KEY FEATURES

- Energy Star 2.0 compliant printer with high capacity 1620 mAh Lithium Ion battery operates up to 17 hours of use per battery charge
- One of the largest media capacity in the 2" receipt market supports 58 mm wide and 50 mm outer diameter receipt roll
- WiFi CERTIFIED™

Model	Resolution	Max. Print Width	Max. Print Length	Max. Print Speed	Dimensions (W x H x D)	Weight
ALPHA-2R	203 DPI	1.89"	90"	4 IPS	89.3 mm x 134.5 mm x 56.5 mm 3.52" x 5.3" x 2.22"	0.35 kg



■ TDM SERIES – GET YOUR RECEIPTS ANYWHERE.

Built with a centralized TSC printer management system, the TDM Series allows for real-time printer health status in two ways – TPH Care Mechanism and Battery Management Solution. By using its self-diagnostic TPH Care Mechanism, the printer can ensure stable, high-quality printouts every time. And with the TDM Series battery management solution, the printer effectively monitors the charging status to maximize battery capacity.

KEY FEATURES

- High capacity 1130 mAh & 3080 mAh Lithium Ion battery operates up to 17/42 hours of use per battery charge
- Self-Diagnostic TPH Care Mechanism
- Smart Battery with TSC Printer Management

Model	Resolution	Max. Print Width	Max. Print Length	Max. Print Speed	Dimensions (W x H x D)	Weight
TDM-20	203 DPI	1.89"	110"	4 IPS	79.0 mm x 116.0 mm x 36.5 mm 3.11" x 4.57" x 1.44"	0.22 kg
TDM-30	203 DPI	2.83"	110"	4 IPS	105.0 mm x 116.0 mm x 49.5 mm 4.13" x 4.57" x 1.95"	0.38 kg



■ ALPHA-3R – SIMPLIFY YOUR EVERYDAY MOBILE PRINTING NEEDS.

The Alpha-3R is a comfortable, light-weight printer capable of working with any mobile printing application where you need quick, simple receipts/selected labels on demand. Featuring one of the largest media capacities in its class, and a long-life rechargeable battery – you will spend more time working and less time on maintenance.

KEY FEATURES

- Large paper capacity to reduce the frequency of changing paper roll
- High-speed processor and extensive memory for fast print speeds of up to 4" (102 mm) per second
- Lasts more than 30 hours of printing receipts/selected labels on a single battery charge

Model	Resolution	Max. Print Width	Max. Print Length	Max. Print Speed	Dimensions (W x H x D)	Weight
ALPHA-3R	203 DPI	2.83"	90"	4 IPS	116 mm x 148 mm x 70 mm 4.57" x 5.83" x 2.75"	0.55 kg



■ ALPHA-4L – RUGGED AND RELIABLE MOBILE LABEL PRINTING.

The Alpha-4L is designed to reliably deliver the mobile labeling and document printing applications you need in the most demanding environments. The printer features a large media cabinet and a long-life rechargeable battery to minimize downtime. With its optional case, the printer is IP54-rated to resist dust, water, and also can endure up to a 6 foot fall and continues to print.

KEY FEATURES

- Works with EPL, ZPL, CPCL, TSC Droid APP & SDK, WinCE Quick-link tool & SDK, iOS SDK
- Wired & wireless communication available: USB 2.0, RS-232, Bluetooth, and 802.11 a/b/g/n
- Linerless ready

Model	Resolution	Max. Print Width	Max. Print Length	Max. Print Speed	Dimensions (W x H x D)	Weight
ALPHA-4L	203 DPI	4.09"	90"	4 IPS	160 mm x 191.6 mm x 79 mm 6.30" x 7.54" x 3.11"	1.1 kg

INTERFACE	Desktop												Industrial					Print Engine	Mobile					Color		
	Direct Thermal			Thermal Transfer									Thermal Transfer					Thermal Transfer	Direct Thermal					Digital		
	TDP-225 Series	TDP-324W Series	DA210 Series	DA220 Series	TDP-247 Series	TTP-225 Series	TTP-243 Pro Series	TE200 Series	TE210 Series	TC200 Series	TC210 Series	TTP-247 Series	TX200 Series	ML240P Series	MB240 Series	MH240 Series	MX240P Series	TTP-2610MT Series	TTP-286MT Series	PEX-1000 Series	Alpha-2R	TDM-20	TDM-30	Alpha-3R	Alpha-4L	CPX4 Series
RS-232 (Serial)	✓			✓	✓	✓	✓		✓	✓	✓	✓	✓	✓	✓	✓	✓	✓	✓	✓	✓(U)			✓(U)	✓(U)	
Centronics (Parallel)					✓		✓(F)			✓	✓(F)	✓	✓(F)			✓(F)	✓(D)	✓	✓	✓						
USB 2.0	✓	✓	✓	✓	✓	✓	✓	✓	✓	✓	✓	✓	✓	✓	✓	✓	✓	✓	✓	✓	✓	✓	✓	✓	✓	✓
Ethernet	✓(D)	✓		✓	✓(F)	✓(D)			✓	✓	✓	✓(F)	✓	✓	✓	✓	✓	✓	✓	✓						✓
Internal Bluetooth			✓(F)	✓(F)				✓(F)						✓(D)	✓(D)	✓(F)	✓(D)			✓	✓(F)	✓	✓	✓(F)	✓	
USB host	✓(F)	✓(F)		✓		✓(F)			✓		✓		✓	✓	✓	✓	(Standard x 2)	✓	✓	(Standard x 1)						
802.11 a/b/g/n wireless (internal)				✓(F)																	✓(F)	✓(F)	✓(F)	✓(F)	✓(F)	
802.11 a/b/g/n wireless (slot-in)													✓(D)	✓(D)	✓(D)	✓(D)	✓(U)	✓(D)								
NFC																					✓(F)	✓	✓			
SD card reader					✓		✓(U)			✓	✓	✓						✓	✓	✓						
microSD card reader	✓	✓				✓							✓			✓	✓			✓					✓	
GPIO															✓(D)	✓(F)	✓(D)	✓(F)	✓(F)							
Real Time Clock	✓	✓		✓(F)	✓(F)	✓	✓(Except for TTP-243E Pro)		✓	✓(F, Standard in EMEA)	✓(F, Standard in EMEA)	✓(F)	✓(TX200 & TX300: F, TX600: Standard)	✓	✓	✓	✓	✓	✓						✓	
WINDOWS DRIVER	OPERATING SYSTEM																									
Windows 2000 professional	✓	✓	✓	✓	✓	✓	✓	✓	✓	✓	✓	✓	✓	✓	✓	✓	✓	✓	✓	✓	✓	✓	✓	✓	✓	
Windows 2000 Server	✓	✓	✓	✓	✓	✓	✓	✓	✓	✓	✓	✓	✓	✓	✓	✓	✓	✓	✓	✓	✓	✓	✓	✓	✓	
Windows XP Home	✓	✓	✓	✓	✓	✓	✓	✓	✓	✓	✓	✓	✓	✓	✓	✓	✓	✓	✓	✓	✓	✓	✓	✓	✓	
Windows XP professional 32 bit	✓	✓	✓	✓	✓	✓	✓	✓	✓	✓	✓	✓	✓	✓	✓	✓	✓	✓	✓	✓	✓	✓	✓	✓	✓	
Windows XP professional 64 bit	✓	✓	✓	✓	✓	✓	✓	✓	✓	✓	✓	✓	✓	✓	✓	✓	✓	✓	✓	✓	✓	✓	✓	✓	✓	
Windows 2003 server 32 bit	✓	✓	✓	✓	✓	✓	✓	✓	✓	✓	✓	✓	✓	✓	✓	✓	✓	✓	✓	✓	✓	✓	✓	✓	✓	
Windows 2003 server 64 bit	✓	✓	✓	✓	✓	✓	✓	✓	✓	✓	✓	✓	✓	✓	✓	✓	✓	✓	✓	✓	✓	✓	✓	✓	✓	
Windows Vista 32 bit	✓	✓	✓	✓	✓	✓	✓	✓	✓	✓	✓	✓	✓	✓	✓	✓	✓	✓	✓	✓	✓	✓	✓	✓	✓	
Windows Vista 64 bit	✓	✓	✓	✓	✓	✓	✓	✓	✓	✓	✓	✓	✓	✓	✓	✓	✓	✓	✓	✓	✓	✓	✓	✓	✓	
Windows 2008 32 bit	✓	✓	✓	✓	✓	✓	✓	✓	✓	✓	✓	✓	✓	✓	✓	✓	✓	✓	✓	✓	✓	✓	✓	✓	✓	
Windows 2008 64 bit	✓	✓	✓	✓	✓	✓	✓	✓	✓	✓	✓	✓	✓	✓	✓	✓	✓	✓	✓	✓	✓	✓	✓	✓	✓	
Windows 7 32 bit	✓	✓	✓	✓	✓	✓	✓	✓	✓	✓	✓	✓	✓	✓	✓	✓	✓	✓	✓	✓	✓	✓	✓	✓	✓	✓
Windows 7 64 bit	✓	✓	✓	✓	✓	✓	✓	✓	✓	✓	✓	✓	✓	✓	✓	✓	✓	✓	✓	✓	✓	✓	✓	✓	✓	✓
Windows 8 32 bit	✓	✓	✓	✓	✓	✓	✓	✓	✓	✓	✓	✓	✓	✓	✓	✓	✓	✓	✓	✓	✓	✓	✓	✓	✓	✓
Windows 8 64 bit	✓	✓	✓	✓	✓	✓	✓	✓	✓	✓	✓	✓	✓	✓	✓	✓	✓	✓	✓	✓	✓	✓	✓	✓	✓	✓
Windows 10 32 bit	✓	✓	✓	✓	✓	✓	✓	✓	✓	✓	✓	✓	✓	✓	✓	✓	✓	✓	✓	✓	✓	✓	✓	✓	✓	✓
Windows 10 64 bit	✓	✓	✓	✓	✓	✓	✓	✓	✓	✓	✓	✓	✓	✓	✓	✓	✓	✓	✓	✓	✓	✓	✓	✓	✓	✓
LINUX DRIVER	OPERATING SYSTEM																									
Linux 32 bit	✓	✓	✓	✓	✓	✓	✓	✓	✓	✓	✓	✓	✓	✓	✓	✓	✓	✓	✓	✓	✓	✓	✓	✓	✓	
Linux 64 bit	✓	✓	✓	✓	✓	✓	✓	✓	✓	✓	✓	✓	✓	✓	✓	✓	✓	✓	✓	✓	✓	✓	✓	✓	✓	
MAC DRIVER	OPERATING SYSTEM																									
OS	✓	✓	✓	✓	✓	✓	✓	✓	✓	✓	✓	✓	✓	✓	✓	✓	✓	✓	✓	✓	✓			✓	✓	

* (U): User, (D): Dealer, (F): Factory Option

Asia Pacific

TAIWAN (CORPORATE HEADQUARTERS)

TSC Auto ID Technology Co., Ltd.

9F., No.95, Minquan Rd., Xindian Dist.
New Taipei City 231
Taiwan (R.O.C.)

Tel: +886 2 2218 6789

E-mail: apac_sales@tscprinters.com

Technical Support: apac_support@tscprinters.com

TAIWAN (LI ZE PLANT)

TSC Auto ID Technology Co., Ltd.

No.35, Sec. 2, Ligong 1st Rd.
Wujie Township, Yilan County 268
Taiwan (R.O.C.)

Tel: +886 3 990 6677

E-mail: apac_sales@tscprinters.com

Technical Support: apac_support@tscprinters.com

CHINA

Tianjin TSC Auto ID Technology Co., Ltd.

2nd Floor Workshop, Rongda Building, No.51
the 9th Avenue, Tianjin Economic-Technologic
Development Area, Tianjin 300457
China

Tel: +86 22 5981 6661

E-mail: apac_sales@tscprinters.com

Technical Support: china_support@tscprinters.com

INDIA

TSC India Representative Office

Office No. 711-B, 7th Floor,
Damji Shamji Corporate Square,
Pantnagar, G. A. Link Road,
Ghatkoper (East) – 400 075
Mumbai
India

Tel: +91 2267 082 465

E-mail: apac_sales@tscprinters.com

Technical Support: apac_support@tscprinters.com

KOREA

TSC Korea Representative Office

#F243, Misa Centum Biz, 45, Jojeong-daero, Hanam-si,
Gyeonggi-do, Republic of Korea 12918

Tel: +82 2 852 3322

E-mail: apac_sales@tscprinters.com

Technical Support: apac_support@tscprinters.com

Americas

USA (CORPORATE OFFICE)

TSC Auto ID Technology America Inc.

3040 Saturn Street Suite #200
Brea, CA 92821
U.S.A.

Tel: +1 657 258 0808

E-mail: americas_sales@tscprinters.com

Technical Support: americas_support@tscprinters.com

MEXICO

TSC Mexico Representative Office

Calle Quimicos 5061
Col. Jardines De Guadalupe
Zapopan, Jalisco CP 45030
Mexico

Tel: +52 (33) 3673 1406

E-mail: americas_sales@tscprinters.com

Technical Support: latintechsupport@tscprinters.com

BRAZIL

TSC Brazil Representative Office

Avenida da Liberdade 1000, Cj 1913
Liberdade
Sao Paulo-SP
Brazil

Tel: +55 (11) 3554 7225

E-mail: americas_sales@tscprinters.com

Technical Support: americas_support@tscprinters.com

Europe, Middle East and Africa

GERMANY (CORPORATE OFFICE)

TSC Auto ID Technology EMEA GmbH

Georg-Wimmer-Ring 8b
85604 Zorneding
Germany

Tel: +49 (0) 8106 37979 000

E-mail: emea_sales@tscprinters.com

Technical Support: emea_support@tscprinters.com

RUSSIA

TSC Auto ID Technology EMEA GmbH

Nizniy Susalniy pereulok 5, bld 19
105064 Moscow
Russia

Tel: +7 495 249 9017

E-mail: emea_sales@tscprinters.com

Technical Support: emea_support@tscprinters.com

MIDDLE EAST

TSC Auto ID Technology ME Ltd., FZE

DAFZA
Building 7WA/West Wing
Office Number - G050
Dubai, UAE

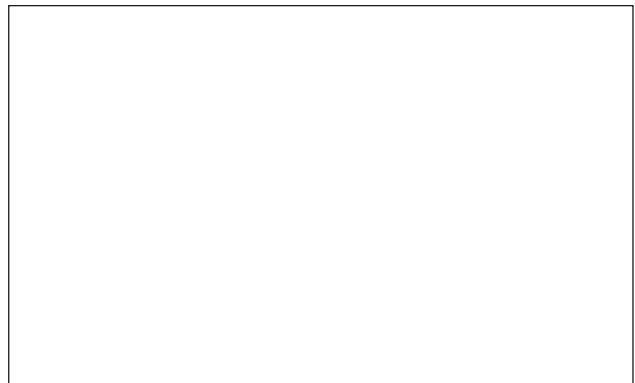
Tel: +971 4 2533 069

E-mail: emea_sales@tscprinters.com

Technical Support: emea_support@tscprinters.com



AVAILABLE THROUGH:



TSC® is a trademark of TSC Auto ID Technology Co., Ltd. All features and specifications are subject to change without notice. © 2020 TSC Auto ID Technology Co., Ltd. V0720_02

