

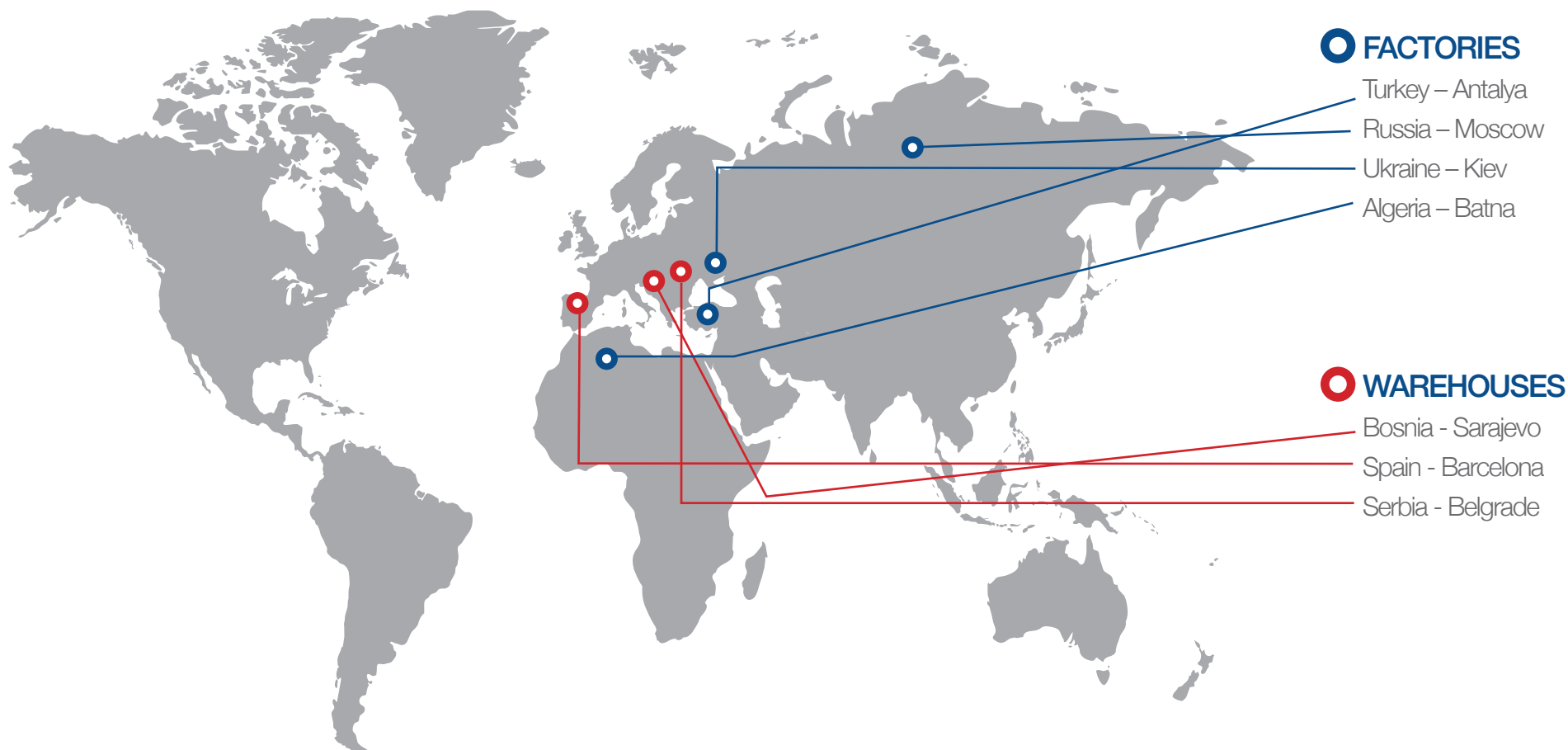
COMPLETED ADOPEN WINDOW PROJECTS



Wintech, the leading global PVC profile manufacturer, was established in Antalya in 1997, with a half century of knowledge and experience of Çağlar Plastics Ind., which is one of the pioneering window producers of Turkey. Wintech moved to the new facilities in the Antalya

Industrial Zone in 2003, which is one of the biggest industrial zones of Europe. Manufacturing process is carried out in shifts seven days a week, 24 hours a day in the Wintech facilities which cover an area of 550K m².

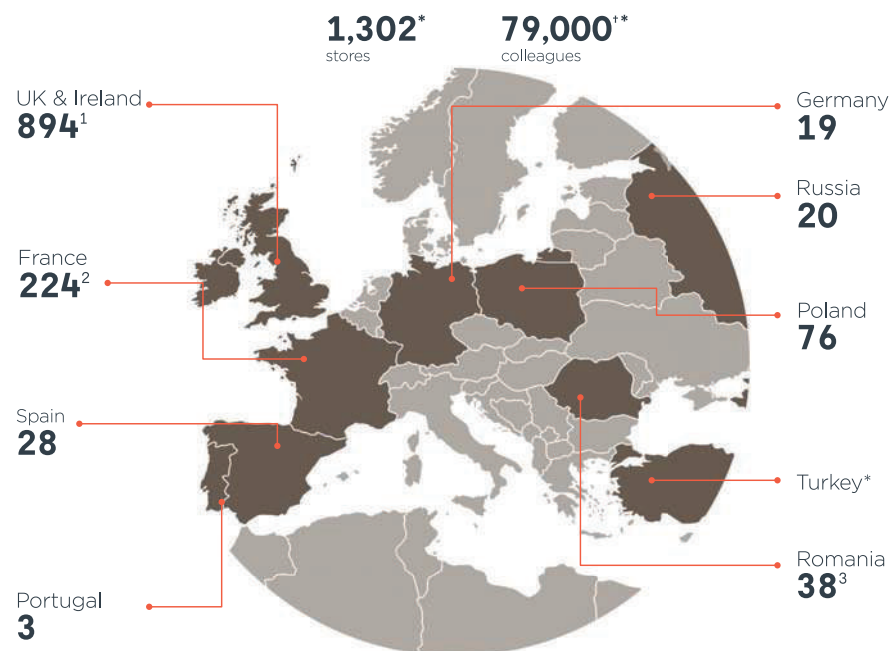
COUNTRIES THAT WE EXPORT OUR WINDOWS TO



COUNTRIES THAT WE EXPORT TO (48)

Afghanistan, Algeria, Australia, Azerbaijan, Belgium, Bosnia- Herzegovina, Brazil, Bulgaria, Chile, Croatia, Djibouti, England, France, Gabon, Georgia, Germany, Ghana, Guinea, India, Iraq, Italy, Lebanon, Libya, Malta, Montenegro, Morocco, Netherlands, North Cyprus, Pakistan, Panama, Paraguay, Peru, Qatar, Romania, Saudi Arabia, Serbia, Spain, Sudan, Sweden, Switzerland, Syria, Tanzania, Tunisia, Turkmenistan, United Arab Emirates, Usa, Venezuela.

KING FISHER MARKETS AND STORES WORLDWIDE



1. B&Q UK & Ireland 296, Screwfix 598.
2. Castorama 101, Brico Dépôt 123.
3. Brico Dépôt 15, Praktiker 23

* Turkey joint venture not consolidated.
[†] Total, not full-time equivalent.

sustainability



www.kingfisher.com

Sustainability is at the core of our ONE Kingfisher transformation. Grounded in our understanding of the customer and what they care about, we have established four big goals which will make it easier for customers to live more sustainably, and challenge us in our own operations.

Find out more www.kingfisher.com/sustainability

our key figures by geography

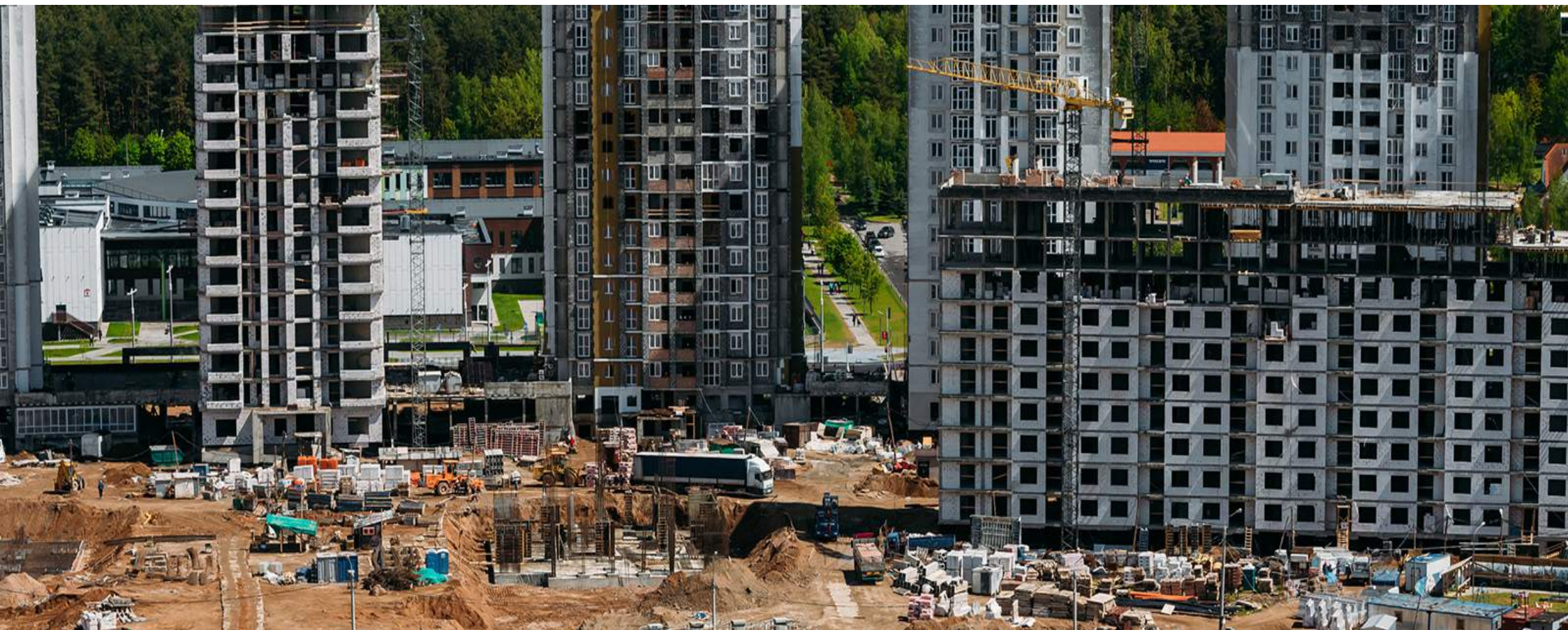


IRAQ- Bismayah New City
100.000 HOUSES – 500.000 WINDOWS



IRAQ - BAGHDAD
2015-2023

ALGERIA ENPI-OPGI HOUSES PROJECT 25.000 HOUSES – 125.000 WINDOWS



ALGERIA - CONSTANTIN - BLIDA - TIARET - BOUFERIK
2012 - 2013 - 2014

Hualing International Special Economic Zone
1.800 HOUSES – 9.000 WINDOWS



GEORGIA - TBILISI
2012 - 2013 - 2014

Vargas Social Housing Project 2nd - 3rd Phase
1.600 HOUSES – 12.000 WINDOWS



VENEZUELA - VARGAS
2013-2014

DJIBOUTI MILITARY HOSPITAL

1.300 WINDOWS



DJIBOUTI
2012

SWITZERLAND VILLA PROJECTS
125 VILLA - 2.500 WINDOWS



SWITZERLAND - ZURICH
2015

AFGHANISTAN AMERICAN BASE 2.000 WINDOWS



AFGHANISTAN- KABUL
2013

SAUDI ARABIA MOSQUE PROJECT



2018

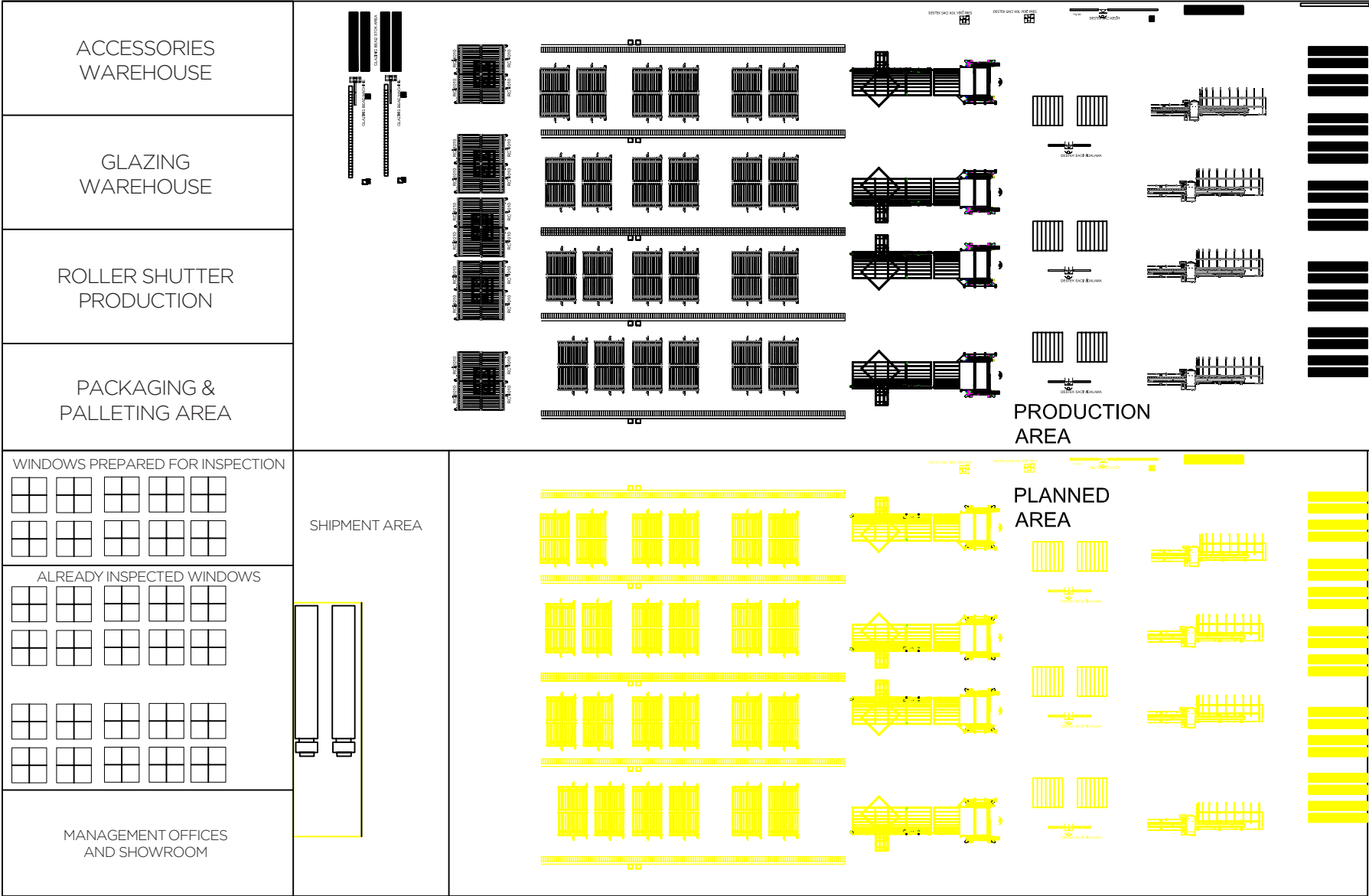
SWEDEN MOUNTAIN VILLAS PROJECT



READY MADE WINDOWS FACTORY PLAN 12.500 m²



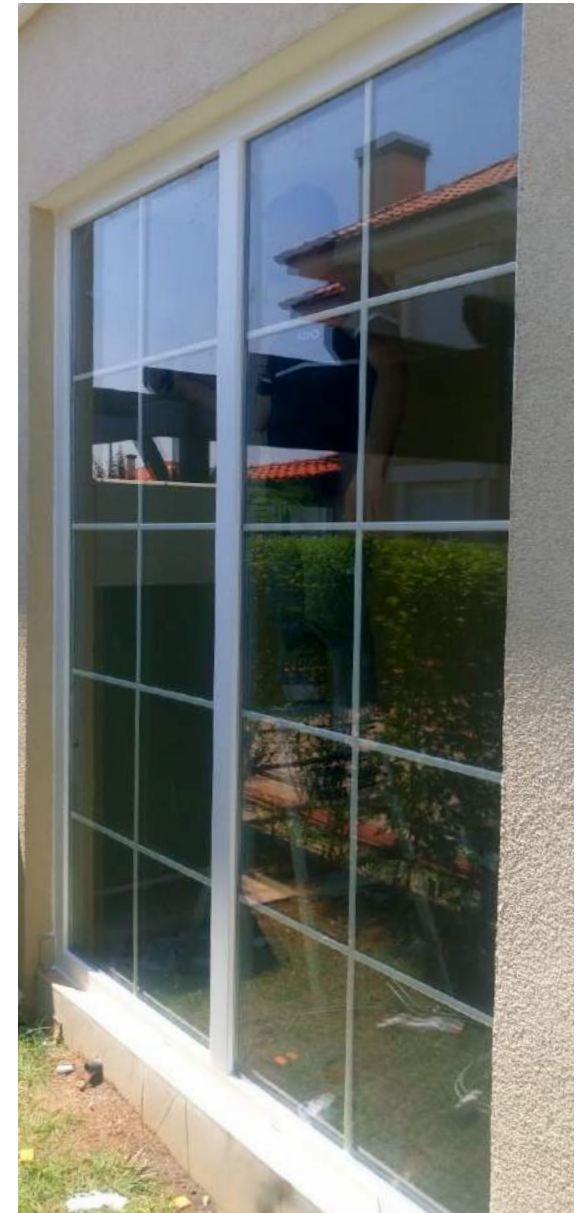
CURRENT CAPACITY : 250.000 PCS / YEAR
PLANNED CAPACITY : 500.000 PCS / YEAR



ADOPEN DIFFERENT WINDOW MODELS



ADOPEN DIFFERENT WINDOW MODELS



PACKAGING



LOADING



ADOPEN DECORATIVE PANEL DOOR MODELS



ADOPEN DOOR MODELS



