

UniSpeed 7  
**Compact. Flexible. Economical.**



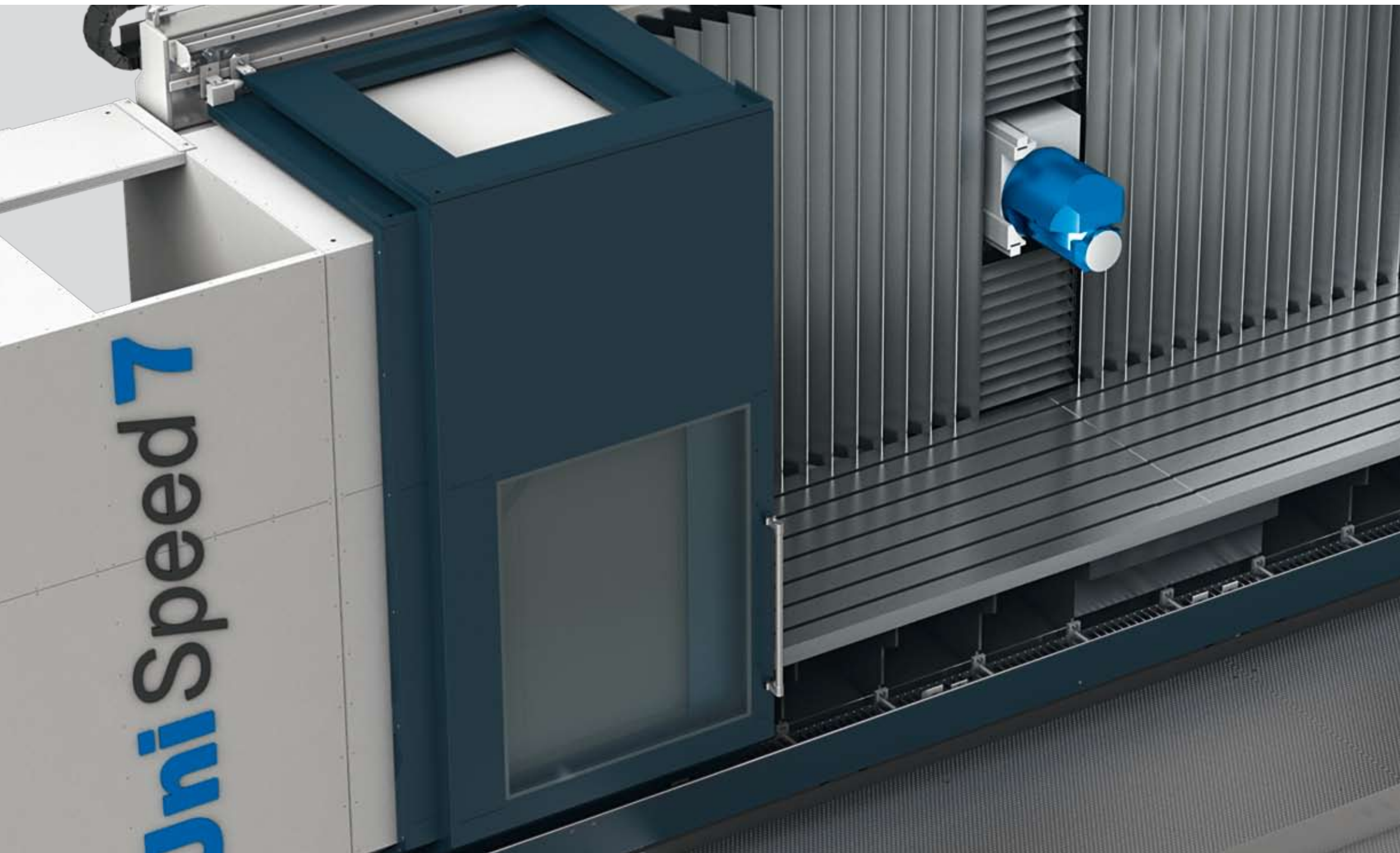
## UniSpeed 7: Compact design in a new dimension.

UniSpeed is the “entry-level class” of SHW tooling machines with limited travel path variations.

As the smallest series in our range, the UniSpeed has all the advantages of SHW machines concentrated in a compact format. The UniSpeed 7 is a compact machine of the latest generation.

Despite the significantly larger working area, it is completely enclosed and can be set up without a foundation.

With the front doors opening symmetrically and two 10-fold tool pick-up columns mounted on the ends of the longitudinal-axis, shuttle machining is also possible after the insertion of a central partition plate.



### The most important technical data:

#### Output

- up to 44 kW

#### Torque

- up to 875 Nm

#### Speed range

- up to 6,000 min<sup>-1</sup>

#### Travel paths

- X = 6,000 mm, Y = 1,600 mm, Z = 1,300 mm

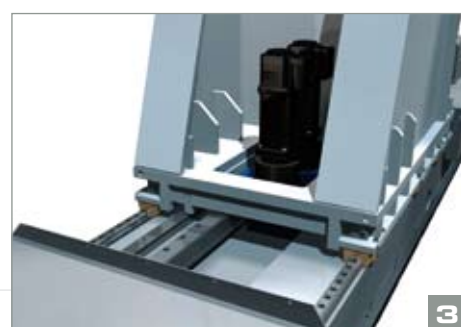
The perfect balance of flexibility,  
dynamics and compact design.



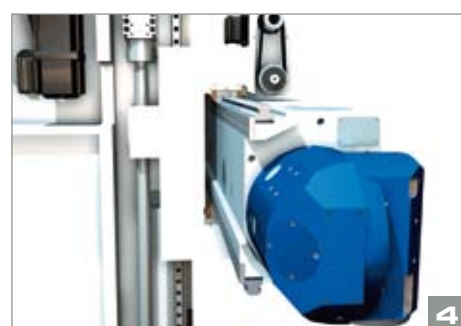
Standard with pick-up system, also with our proven robotic tool changer (optional) for the fastest clamp-to-clamp time with the highest degree of availability.



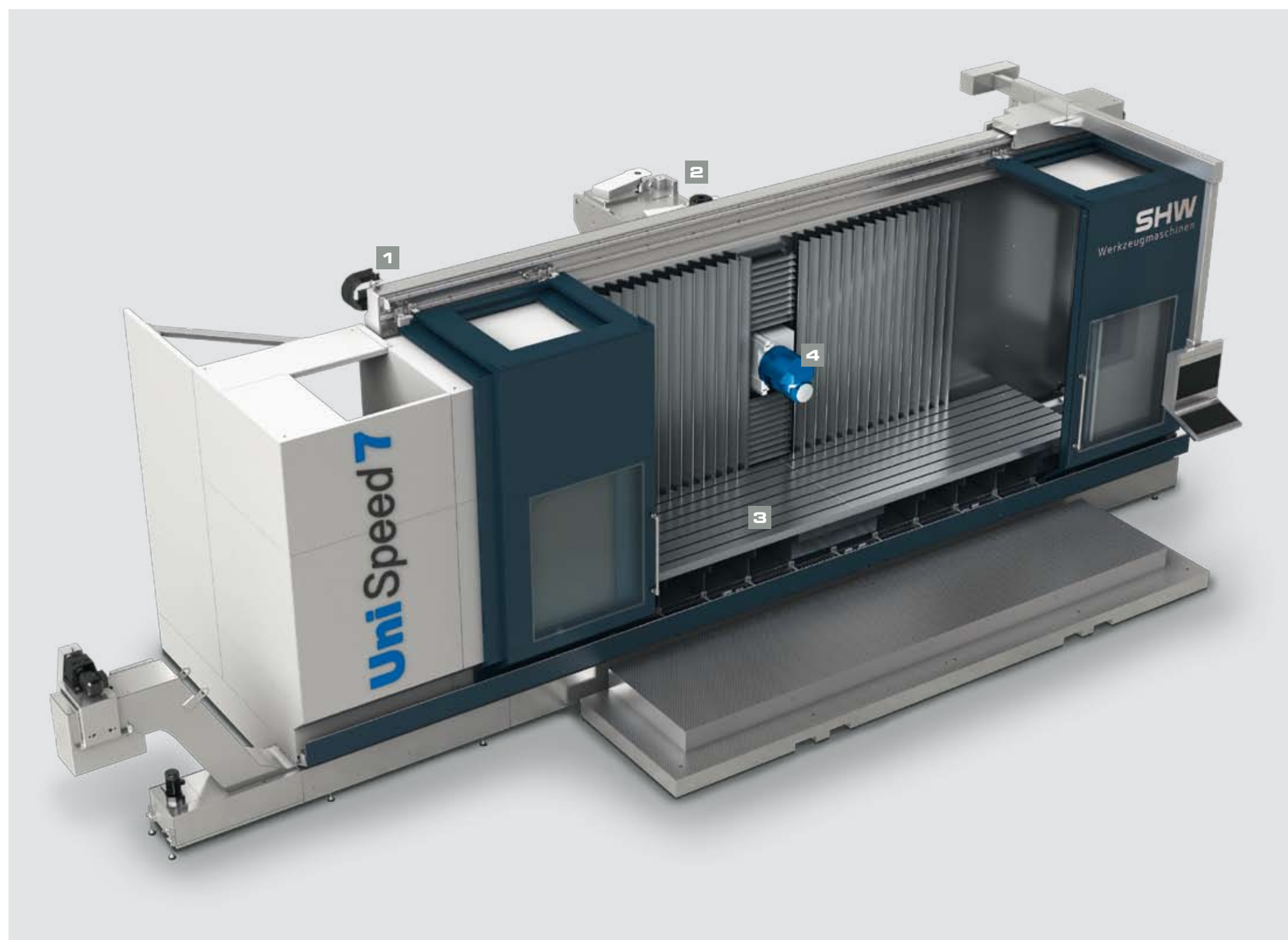
Two liquid-cooled drives in the vertical-axis supply it with dynamic power.



Optimised guide tracks and rack and pinion drive for power in the x-axis and highly dynamic acceleration.

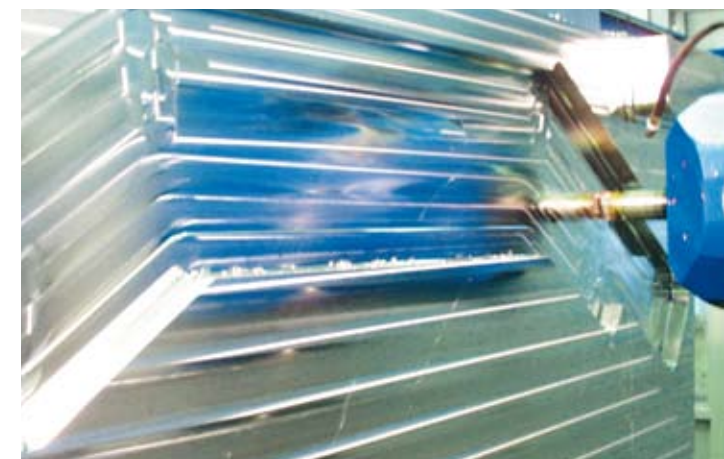


Close spacing of the guide tracks to the column and headstock results in short power transfer distances and thus higher rigidity for powerful milling and machining.





SHW industry expertise:  
Specialist versatility.





We are consistent in many ways.  
By always remaining flexible.

SHW tooling machines represent the famous "Made in Germany" quality claim and – to raise the standard even further – the best performance from Swabia. And we are bound by the fact that our origins are here, our success is grounded here, and we see our future here. In recent years we have grown steadily at our location and we have continued to invest in our company and our employees.

In the future, too, we want to continue to move forward, remain flexible and think ahead. With self-confidence and sound judgement we thus create the conditions to meet our customers' needs in the future, assert our position as a technological market leader and take a firm step forward.

Those who come to us get much more than a mere machine.

Our machines have a considerable impact on the processes of our customers. That is why we bear a great deal of responsibility and thus approach each project holistically. We see the task you set us as a challenge. Our aim is to develop and implement the best solution for each situation – and that involves far more than "just" an excellent machine.

#### **Personal support from the outset**

- With us, each customer gets "his own" project team, which stands by his side from the outset and also provides him with advice on the structural design.

#### **"Turn-key" machines**

- The machine that we hand over to you is immediately fully operational.

#### **Training**

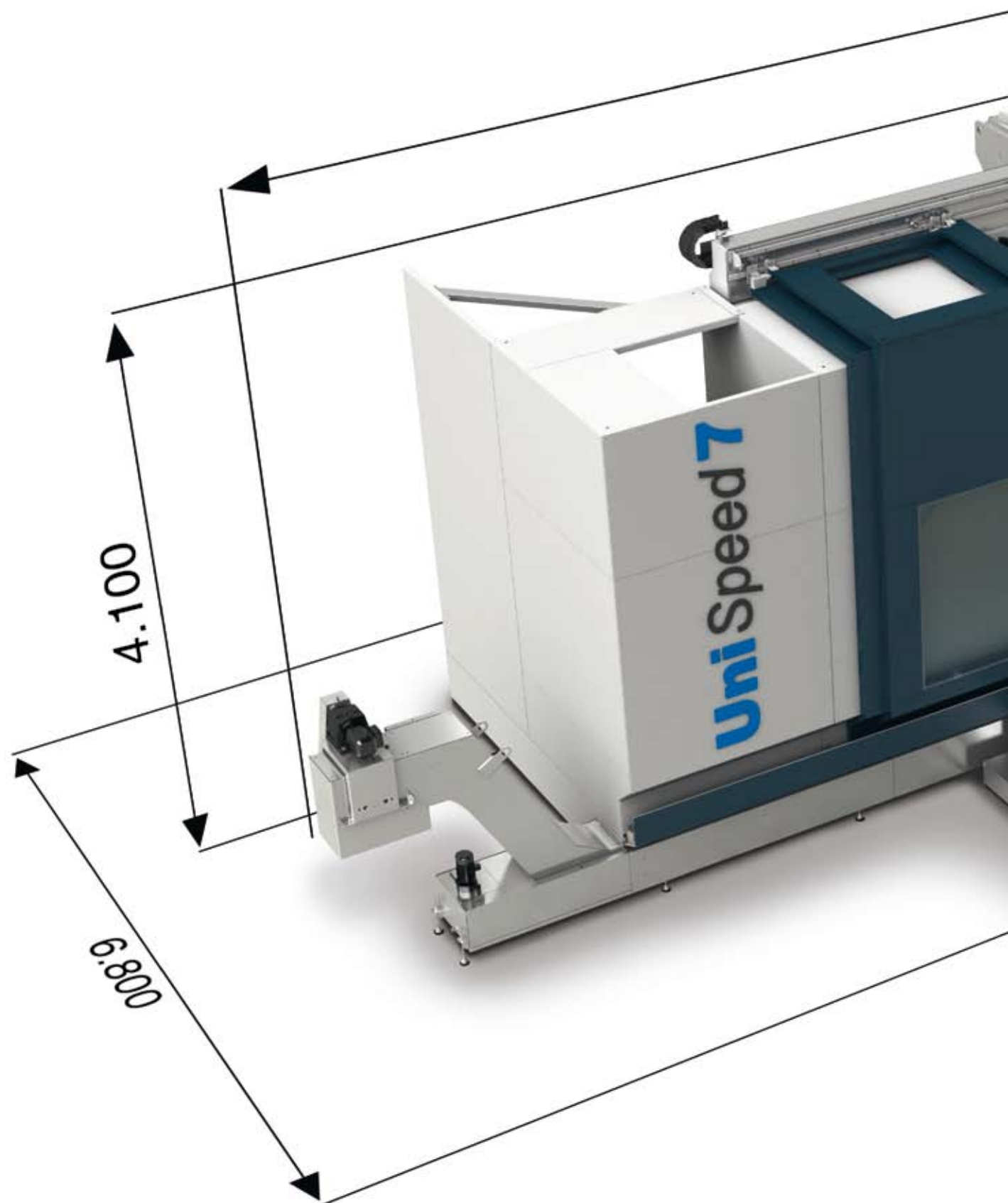
- We provide your operating staff with comprehensive training so that you can take full advantage of all the capabilities of your SHW machine. Our support begins with basic programming courses and extends to production support.

#### **Service – for the life of the machine**

- After commissioning, we continue to provide support for customers' machines. Your SHW service technician will look after and maintain your machine over its lifetime, and will make regular on-site visits.
- We provide the fastest possible service – worldwide.
- All SHW machines are capable of remote diagnosis – a service tool that you can use without additional expense.



## Technical data

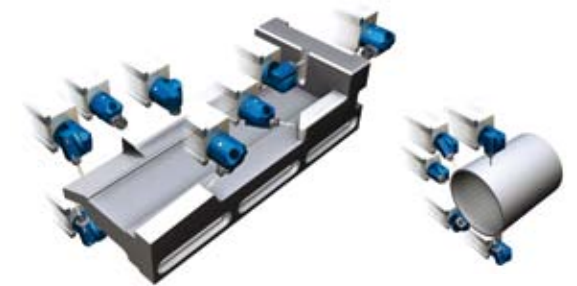


## Compact and powerful: the universal SHW milling head (orthogonal head).

- Every SHW machine features the expertise that we have built up over 50 years of manufacturing universal milling heads. The new stepless orthogonal head on the UniSpeed 7 comes as standard! As a result, you also get the numerous advantages of this head as standard, including:

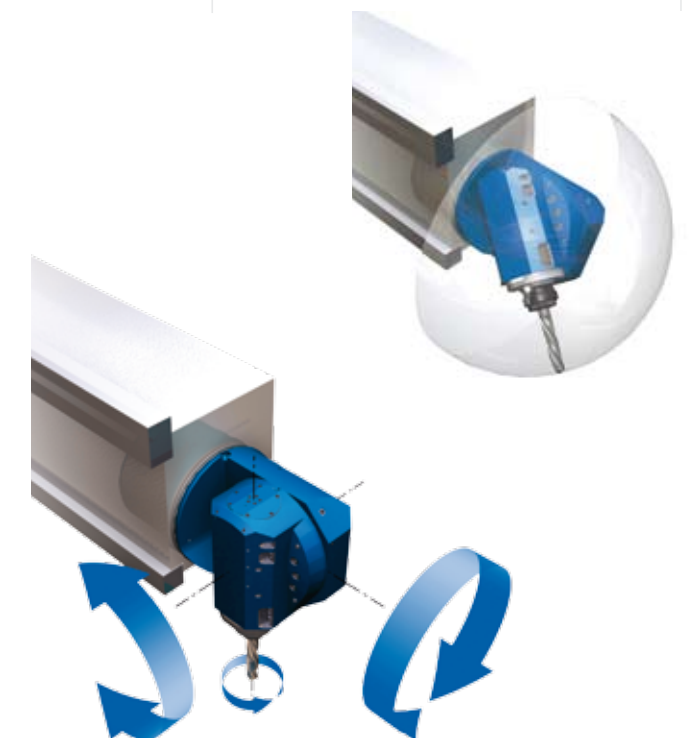
- 64,800 different machining positions.
- Milling head (A-axis) swivels through 180°, milling head holder (C-axis) swivels through 360° (in degree increments).
- Each position is automatically swivelled into and calculated in the NC program.
- Friction and form-fit connections ensure that the drive power is fully transferred and utilised in every position.
- Tool holder SK 50/HSK 100
- Drive power up to 44 kW
- Torque up to 875 Nm
- Speed range up to 8,000 min<sup>-1</sup>

### Machining options



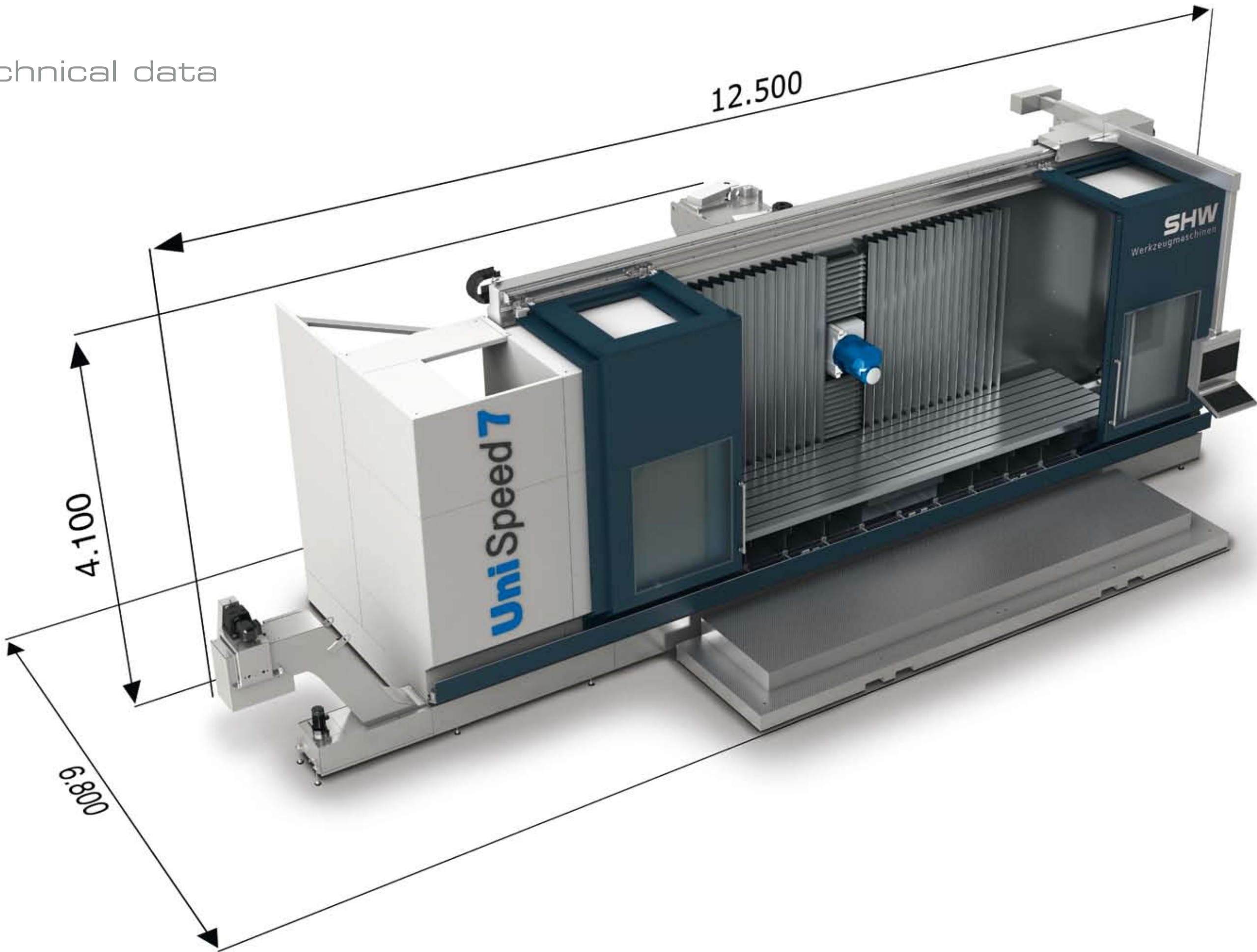
### Milling head holder

360° x milling head 180° = 64,800  
various positions in an imaginary hemisphere can be achieved.





Technical data



Machining area / travels		
X-axis [horizontal lengthwise]	mm	6,000
Y-axis [vertical]	mm	1,600
Z-axis [horizontal crosswise]	mm	1,300
Orthogonal head		
for 64,800 programmable head positions		
Clamping table		
Max. table load	mm	6,000 x 1,200
For milling	kg	6,000
Feed rates and rapid traverses		
[X-, Y-, Z-axis]	mm/min	0 – 30,000
Acceleration of linear-axis	m/s²	3,5
Drive power		
Speed range	kW	up to 44
	min <sup>-1</sup>	22 – 6,000
Tool holder		
Optional	SK 50 DIN 69871	HSK 100 A DIN 69893
CNC System		
Heidenhain and Siemens		
ATC		
Number of pockets	SK 50 DIN 69871	48, 66
Machine weight		
	kg	approx. 40,000

**SHW Werkzeugmaschinen GmbH**

Alte Schmiede 1

73433 Aalen-Wasseralfingen

Tel.: +49 (0)7361 5578 800

Fax: +49 (0)7361 5578 900

[info@shw-wm.de](mailto:info@shw-wm.de)

[www.shw-wm.de](http://www.shw-wm.de)