

# hyperMILL®

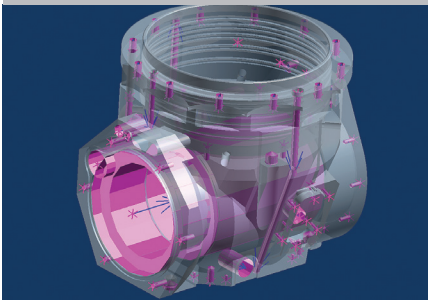
## 5AXIS

## Machining mechanical components on the Unipro-5P

The CAM software *hyperMILL*® offers intelligent strategies such as feature and postprocessor technologies that allow users to program standard machining jobs more quickly and efficiently.

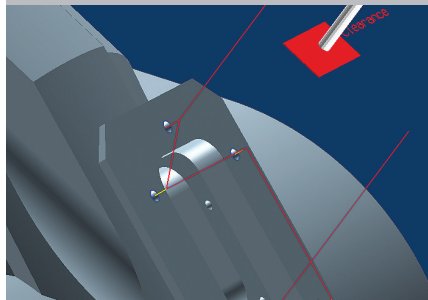
### Feature recognition and feature transfer

Solid and surface models: Geometries for 2D operations, like drilling, are automatically recognised and grouped according to parameters they have in common, such as depth, orientation, etc.



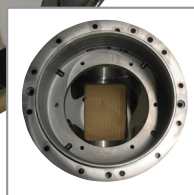
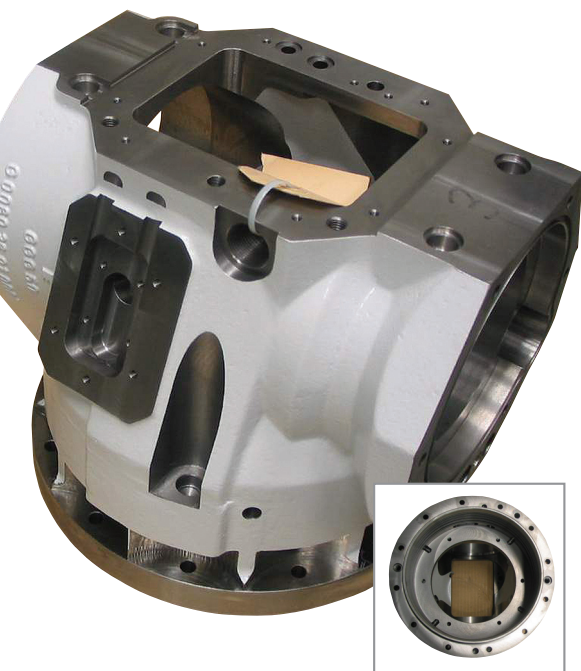
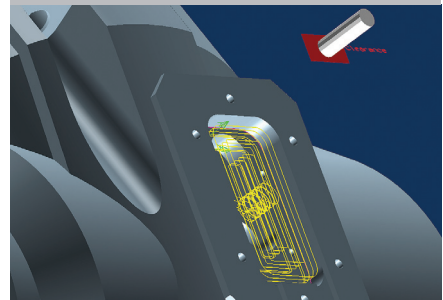
### Multi-axis drilling

2D operations can be manually defined from different directions. Thanks to the modern 5axis drilling option, drilling jobs with different tilt angles can be automatically generated.



### Postprocessor support

OPEN MIND Technologies' postprocessor technology supports, among other things, control cycles. This means such options as tapping are supported as well.



<b>Machine:</b>	Unipro 5P with Siemens 840D
<b>Performance data:</b>	100 kW (25.000 rpm HSK 63)
<b>Max. torque:</b>	90 Nm (S6-40%)
<b>Table size:</b>	680 x 680 mm
<b>Travel speed X/Y/Z:</b>	60.000 mm/min.
<b>Traverse path X-axis:</b>	2 x 1.000 mm (two-station machine)
<b>Traverse path Y-axis:</b>	800 mm
<b>Traverse path Z-axis:</b>	500 mm
<b>Traverse path B-axis:</b>	360°
<b>Traverse path C-axis:</b>	360°
<b>Max. rotational/ tilt speed:</b>	32 rpm
<b>Max. transport load:</b>	750 kg
<b>Max. workpiece size:</b>	Ø800 mm x H-450 mm



**OPEN MIND • THE CAM COMPANY**

**OPEN MIND Technologies AG**  
 Argelsrieder Feld 5 • 82234 Wessling • Germany  
 Phone +49-8153-93 35 00 • Fax +49-8153-93 35 01  
 E-Mail: Sales.Europe@openmind-tech.com  
 Support@openmind-tech.com



**Unisign**  
 Industrieterrein 36 • P.O. Box 7047  
 NL-5980 AA Panningen • Netherlands  
 Phone +31-77-30 73 777 • Fax +31-77-30 75 436