

Aerospace part milled on MATRIX 800 K25/2T

hyperMILL® 2-D, 3D- operations and 5Axis machining including a lot of high quality strategies for roughing, swarf cutting or curve milling.

e.g. Roughing on Any Stock

Stock tracking, plane level detection and horizontal allowance: keeping allowance at the walls for final wall finishing while finishing the bottom by roughing.

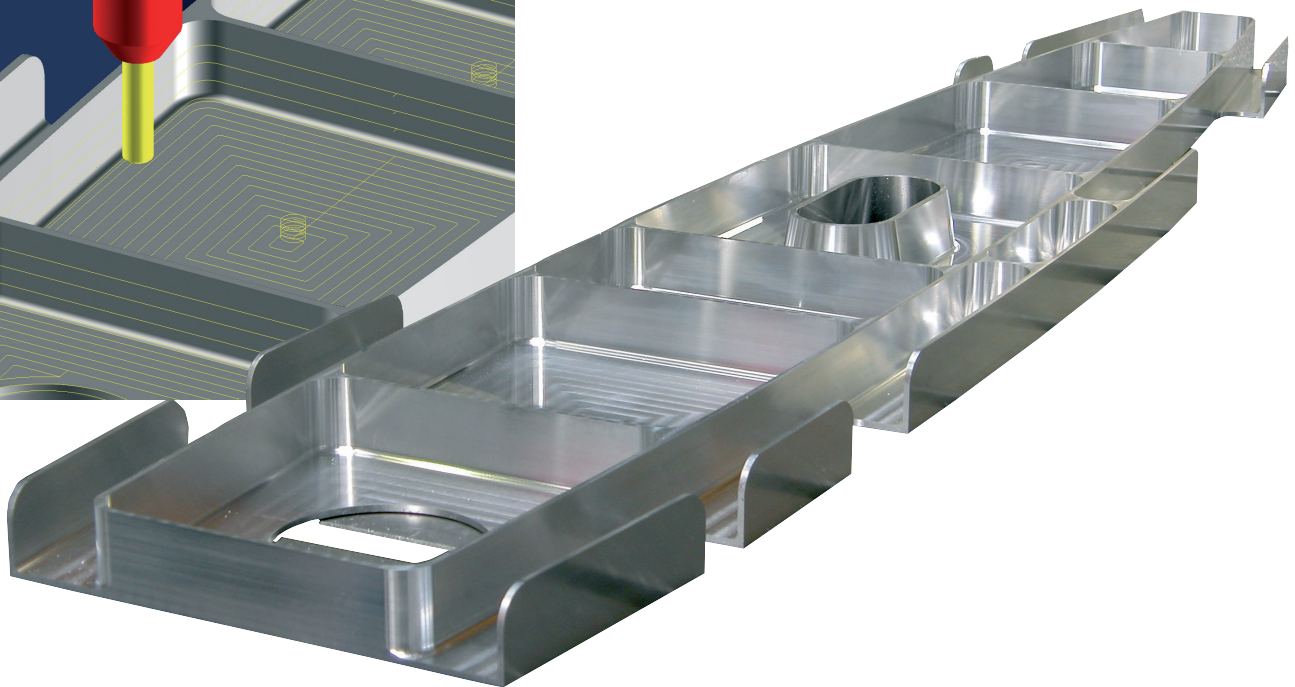
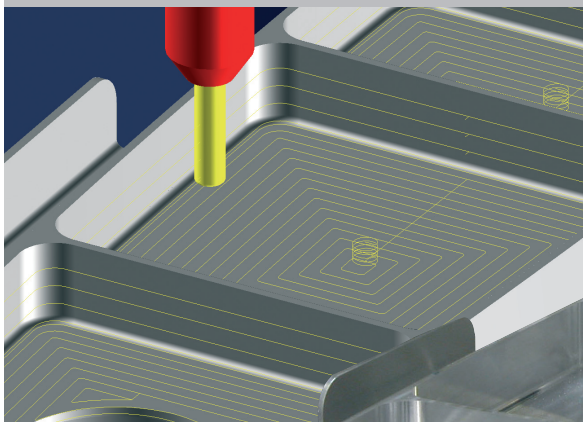
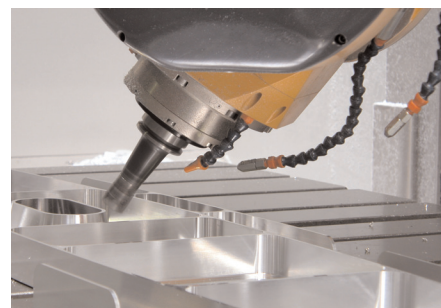


Table length:	78.7 - 118 inch
Table width:	78.7 inch
Table loading capacity:	2,048 ft
T-slots (width/pitches):	0.9/9.8 inch
"X" axis travel:	78.7 inch
"Y" axis travel:	63 - 98.4 inch
"Z" axis travel with standard table:	31.5 inch
"C" axis rotation:	Continuous



OPEN MIND • THE CAM COMPANY

OPEN MIND Technologies USA, Inc.
70 Walnut Street • Wellesley Hills, MA 02481 • USA
Phone: +1-781-239 80 95 • Fax: +1-270-9 12 58 22
E-Mail: Sales.Americas@openmind-tech.com
www.openmind-tech.com



Breton SpA
Via Garibaldi, 37 • 31030 Castello di Godego (TV) • Italien
Telefon +39-831 57 00 - 0 • Fax +49-831 5700 - 10
E-mail: marketing@breton.it