

Locator Studio

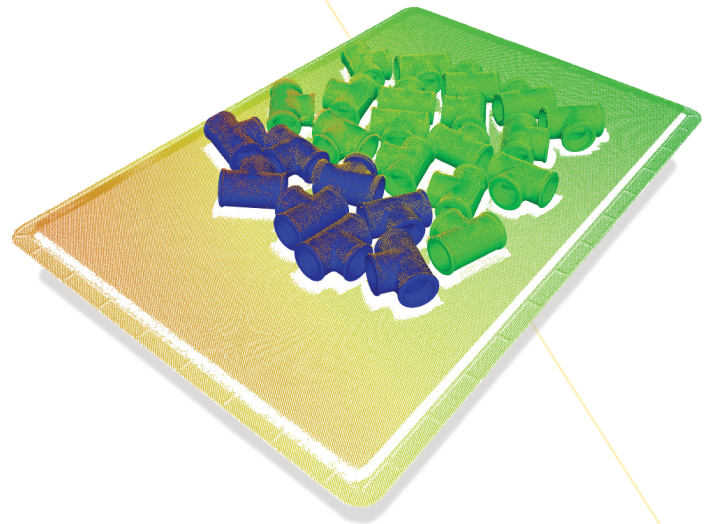
Simple way of 3D picking

Trade the responsibility for control

Locator Studio is the right choice for you.

It offers an intuitive UX/UI design, compatibility with any robot model or industrial manipulator, and very easy plug and play installation.

Locator Studio represents the ultimate tool that will enable you to enter 3D vision - guided robot applications.



Benefits of Locator Studio



Robot agnostic



Quick and easy deployment



Reporting multiple positions for parts in (x,y,z,rx,ry,rz)



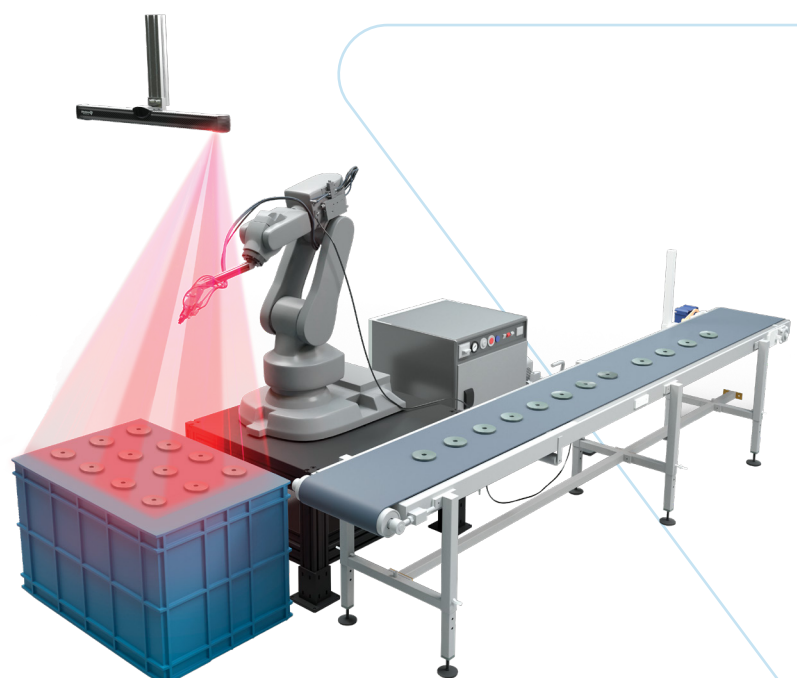
Open TCP/IP communication protocol



Localization engine proven by hundreds of applications

Use cases

- Reference position reporting in 3D space
- De-racking applications
- Handling of structured & semi-oriented parts
- Picking of parts from non-collision environment



Compatible with

Palletizing robots



Delta robots



Scara robots



PLCs

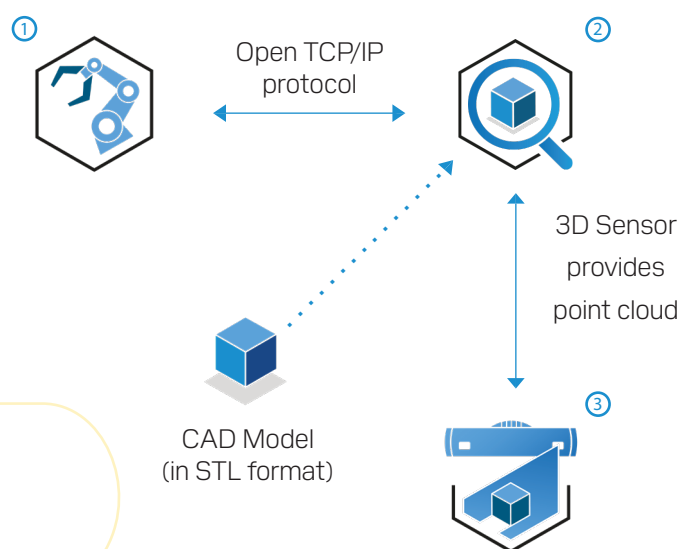


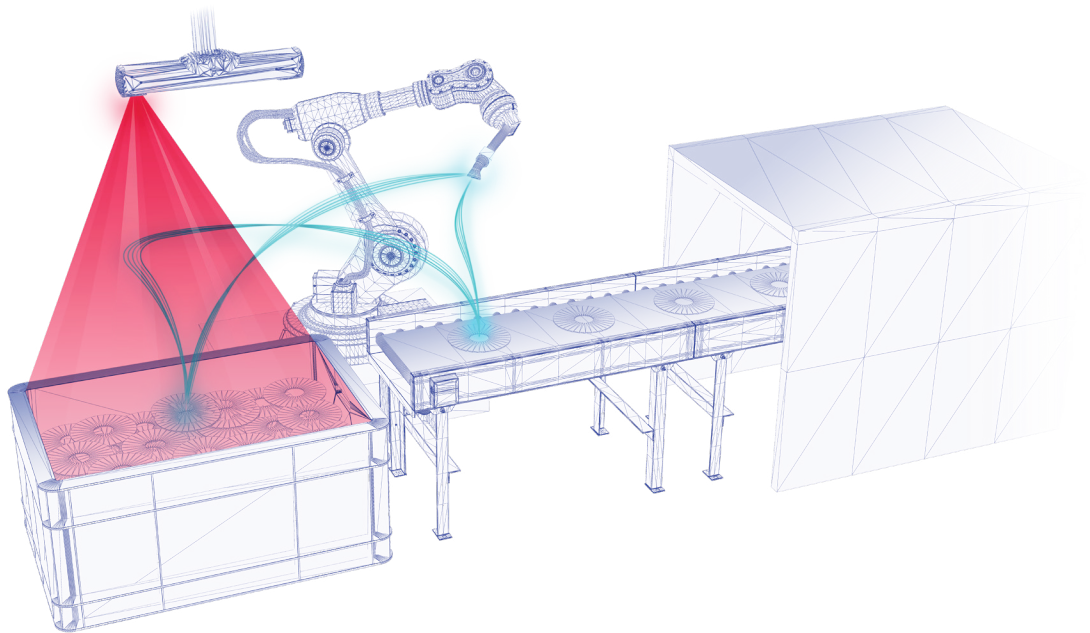
Standard industrial robots



How it works

- ① Manipulator asks for a position of the object
- ② Locator Studio triggers the scan
- ③ Locator sends position and orientation data





Contact us

USA Office

Photoneo Inc.
1830 Airport Exchange
Blvd | Suite 220
Erlanger, KY 41018
Kentucky

Sales USA

+1 518-709-2653
sales-us@photoneo.com

Headquarters

Photoneo s.r.o.
Plynárenská 1
82109 Bratislava
Slovakia

Sales HQ

+421 948 766 479
sales@photoneo.com

Sales Germany

+49 160 97924817
sales@photoneo.com

China Office

Photoneo
2#309 Lane 88
Shengrong Road
Pudong New Area
Shanghai 201210

Sales China

+86 13510595522
sales@photoneo.com

