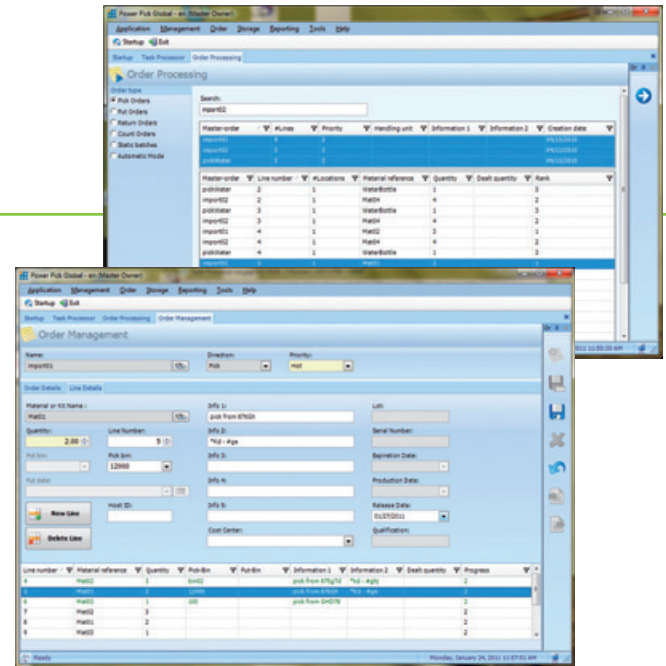


## Power Pick® Global Order Processor

Power Pick Global Order Processor Software is the business solution designed to grow with your business. From managing a single workstation to multiple work zones, Power Pick Global Order Processor software may be configured to maximise your changing organisation.

In fact, a company can start with standard shelving and rack system and later grow to pick-to-light and automated storage and retrieval equipment. Power Pick Global Order Processor software allows you to manage and control your operations today and tomorrow.



### Power Pick Global Order Processor – Software Features

- Efficiently manages your warehouse by integrating Shuttles, Vertical Carousels, Horizontal Carousels, Shelving, Rack and Pick-to-light
- Advanced Inventory Control including Lot handling, Serial # tracking, FIFO picking and Expiration Dates
- Optimised cube space management to get the most storage capacity from your automated and manual warehouse locations
- Order handling includes pick, put and count orders. Orders can be picked individually or as a batch.
- Documents and photos can be associated with material to help visually verify each specific SKU.
- Graphical 3D tools for configuring bins, shelves and warehouse locations
- Unlimited number of warehouses, zones and Workstations
- Settings are configurable globally, by workstation or by individual user
- Configurable host integration for easy, fast and low risk implementation. Text files and database interfaces are supported as well as a direct interface with SAP
- Bar codes can be used to input material and order data as well as scan and verify key information such as lot and serial number to improve pick accuracy
- Screen lists, Reports and Labels can be customised to the end-users' requirements
- Fields can be added to the database for additional data tracking
- Internet-based product support for software updates, downloads, problem reports and web-based technical support
- Context-sensitive, on-line help is available from all forms in the software making help just one click away
- Multi-lingual support: language can be customised per user
- Secured access to material is ensured through user and group rights and controlled access to warehouse locations
- Runs on Microsoft Windows Operating Systems
- Supported Databases include SQL Server and Oracle

### Power Pick Global Order Processor – Key Benefits

#### Reduces Inventory

Real time inventory status and detailed managerial reports allow users to manage their operations efficiently. Ideal for facilities implementing JIT and Lean Manufacturing.

#### Increases Throughput

Whether optimising and directing pickers with optimised printed lists, or directing automated equipment using light directed picking systems, Power Pick Global Order Processor software uses batch picking and put-aways to increase workers' efficiencies.

#### Reduces Floor Space Requirements

Advanced cubing algorithms allow users to maximise every square inch of storage space. Extends Order Cut-Off Times - Increased efficiencies and being able to prioritise orders by carriers cut-off times allow orders to be processed much later.

#### 99.99% Accuracy

From creating optimised pick lists, to bar code verification to pick & put-to-light, users of Power Pick Global Order Processor often see accuracy levels rise to 99.99%.

#### Increases Customer Satisfaction

By having material on-hand, and orders picked accurately and timely you will be able to offer your customers increased levels of performance.



Please contact Kardex Remstar for details of supported versions of operating systems and databases.

[www.kardex-remstar.com](http://www.kardex-remstar.com)

**Power Pick Global Order Processor – Features:**

**Material Master Data:**

- Material name
- Default storage bin
- Default storage properties
- Material alias
- 5 Material description fields
- UOM descriptor (i.e. Piece, Case, Litre)
- Reorder points
- Material families
  - Storage Rules
  - Storage Bin selection
- Max stock per bin
- Multiple scan codes (UPC/EAN) per material
- Image support
- Supplemental document support (PDF, CAD, etc)

**Material (Inventory) Control:**

- Lot number handling\*
- Serial number handling\*
- Expiration date handling
- Release date handling
- Production date handling
- Qualification handling
- Zone handling\*
- FIFO by storage date
- FIFO by expiry date
- FIFO by production date
- FIFO granularity (Days, hours, minutes, etc)
- Lot and serial# validation\*
- Lot and serial# recording (history)\*

**Location and Bin Management:**

- Graphical location and bin configuration
- 3D Shelf View
- Permanent and temporary locations
- Zone management\*
- Multiple materials per location
- Multiple material attributes per location
- Automated and Manual locations
- Configurable Storage Bins

**Pick, Put and Return Material:**

- Manual Pick
- Manual Put
- Manual Return (Store to previous FIFO date)
- Dynamic Pick Lists
- Dynamic Putaway Lists
- Graphical shelf view during picking and stocking

**Count Material - Inventory: \***

- Count a list of materials
- Count a list of warehouse locations
- Count a random list of locations

**Host Interface:**

- SAP integration (bi-directional)\*
- Configurable data formats
- Text file interface
- SQL interface
- Import Materials
- Import Orders
- Export Transaction Results (Confirmations)

**Order Handling:**

- Pick Orders
- Put Orders
- Return Orders
- Count Orders\*
- Static Batching\*
- Dynamic Batching\*
- Continuous Batching\*
- Host directed Batching\*
- Batch Light Support\*
- Auto-start orders
- Parallel and Pick N Pass Supported

**Warehouse Management:**

- Flexible workstation configurations

**Data Management:**

- Dynamic database fields\*
- Transaction History

**Reporting and On-Screen Lists:**

- Lists and Labels reporting tool
- Integrated Report Designer
- Royalty-free license
- Configurable reports by User, Workstation, Global
- Lists can be copied and customised
- Printable screen lists
- Filter and sort data

**Barcode Label Printing:**

- Integrated barcode label printing
- On-demand labels
- Label Designer

**Usability:**

- Material and Order Search
- Context-sensitive Online help
- Configurable startup screen
- Software Configuration by User, Workstation, Global

**User Management:**

- User controlled access
- Group management
- Windows authentication (single sign-on)
- Password expiration rules
- Carrier access control
- User rights
- Group rights
- Multi-Lingual support
- Ergonomic height by user

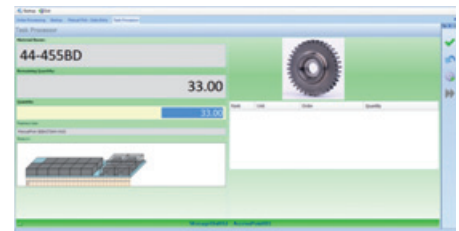
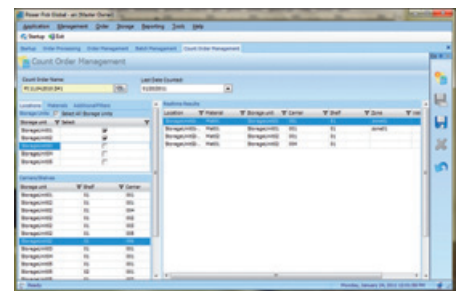
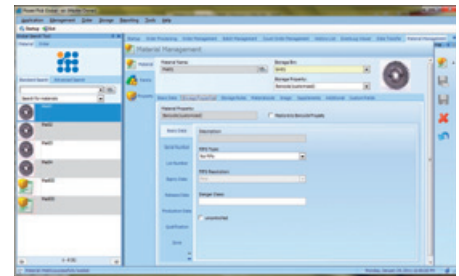
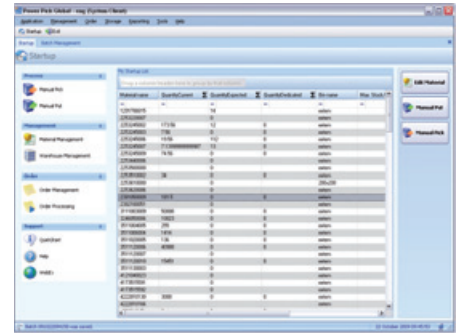
**Machine Control:**

- Machine configuration wizard
- Support for competitive controls

**Architecture:**

- SOA (service oriented) architecture
- Microsoft .Net technology platform

\*Optional features available at additional cost.



Further information:  
[www.kardex-remstar.com](http://www.kardex-remstar.com)

