

Power Pick® Global Communicator Pro

Power Pick Global Communicator Pro Transaction Processor Software is the business solution designed to grow with your business. From managing a single workstation to multiple work-zones, Power Pick Global Communicator Pro Transaction Processor Software may be configured to maximise your changing organisation. Designed to link to your existing host, WMS/ERP/LESA inventory database, Power Pick Global Communicator Pro software manages order picking activities. From horizontal and vertical carousels to Shuttles to pick-to-light and manual shelving and rack areas, Power Pick Global Communicator Pro provides maximum control. Multiple inventory management techniques including: batch picking, pick and pass, parallel picking, static or dynamic batching, host directed batching and many more are incorporated.



Power Pick Global Communicator Pro – Software Features

- Efficiently manages your warehouse by integrating Shuttles, Vertical Carousels, Horizontal Carousels, Shelving, Rack and Pick-to-light
- Power Pick Global Communicator Pro integrates with your host warehouse management system to process orders and optimize picking with automated storage equipment
- Inventory and locations are managed by your WMS, eliminating duplicate inventory systems and the need to reconcile those systems
- Protects your investment in your WMS and allows automation to be integrated with minimal effort
- Order handling includes pick, put and count orders. Orders can be picked individually or as a batch.
- Unlimited number of warehouses, zones and workstations
- Settings are configurable globally, by workstation or by individual user
- Configurable host integration for easy, fast and low risk implementation. Text files and database interfaces are supported as well as a direct interface with SAP.
- Bar codes can be used to input material and order data as well as scan and verify key information such as lot and serial number to improve pick accuracy
- Screen lists, Reports and Labels can be customised to the end-users requirements
- Fields can be added to the database for additional data tracking
- Internet based product support for software updates, downloads, problem reports and web-based technical support
- Context-sensitive, on-line help is available from all forms in the software making help just one click away
- Multi-lingual support: language can be customised per user
- Secured access to material is ensured through user and group rights and controlled access to warehouse locations
- Runs on Microsoft Windows Operating Systems
- Supported Databases include SQL Server and Oracle

Power Pick Global Communicator Pro – Key Benefits

Reduces Inventory

Real time inventory status and detailed managerial reports allow users to manage their operations efficiently. Ideal for facilities implementing JIT, Lean Manufacturing and Six Sigma philosophies.

Increases Throughput

Whether optimising and directing pickers with optimised printed lists, or directing automated equipment using light directed picking systems, Power Pick Global Communicator Pro software uses batch picking and put-aways to increase workers' efficiencies.

Extends Order Cut-Off Times

Increased efficiencies and being able to prioritise orders by carriers cut-off times allow orders to be processed much later.

99.99% Accuracy

From creating optimised pick lists, to bar code verification to pick & put-to-light, users of Power Pick Global Communicator Pro often see accuracy levels rise to 99.99%.

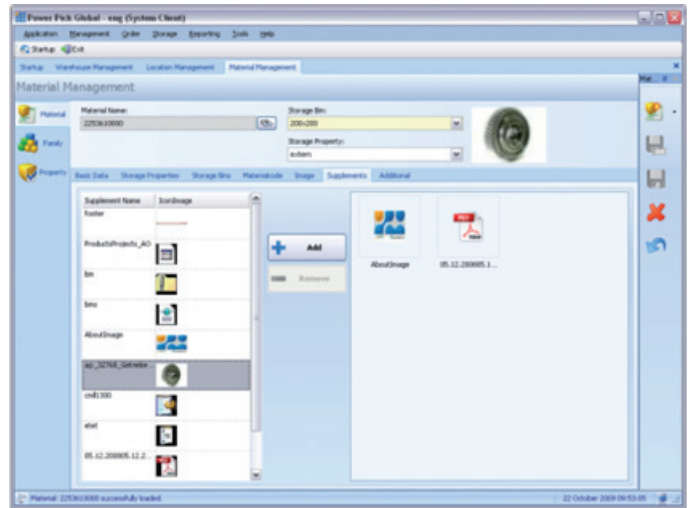
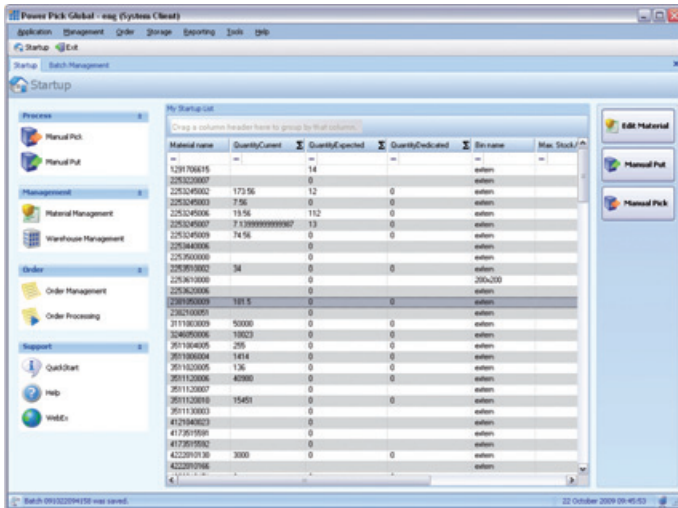
Increases Customer Satisfaction

By having material on-hand, and orders picked accurately and timely you will be able to offer your customers increased levels of performance.

Please contact Kardex Remstar for details of supported versions of operating systems and databases.

www.kardex-remstar.com





Power Pick Global Communicator – Pro Features:

Order Handling:

- Pick Orders
- Put Orders
- Return Orders
- Count Orders*
- Manual Batching*
- Automatic Batching*
- Continuous Batching*
- Host Directed Batching*
- Batch Light Support*
- Parallel and Pick N Pass Supported
- Pick Order Lines by Material ID, Lot# and/or Serial number

Cycle Counting:*

- The host computer system can send a list of locations and materials to be counted daily or as needed

Host Interface:

- SAP integration (bi-directional)
- Configurable data formats
- Text file interface
- SQL Interface
- Import Orders
- Export Transaction Results (Confirmations)

Warehouse Management:

- Flexible workstation configurations

Data Management:

- Dynamic database fields
- Transaction History

Machine Control:

- Machine configuration wizard
- Support for competitive controls

Reporting and On-Screen Lists:

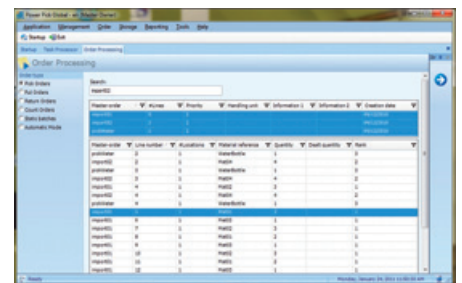
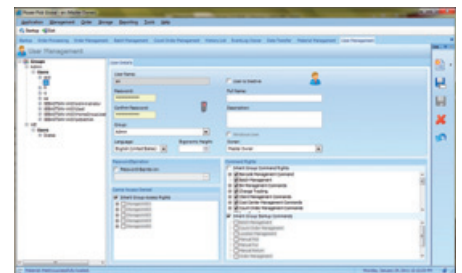
- Integrated Report Designer
- Royalty-free license
- Configurable on-screen reports by User, Workstation, Global
- Lists can be copied and customised
- Printable screen lists
- Filter and sort data

Barcode Label Printing:

- Integrated barcode label printing
- On-demand labels
- Label Designer

Usability:

- Material and Order Search
- Context-sensitive Online help
- Configurable startup screen
- Software Configuration by User, Workstation, Global



User Management:

- User controlled access
- Group management
- Windows authentication (single sign-on)
- Password expiration rules
- Carrier access control
- User rights
- Group rights
- Multi-lingual support
- Ergonomic height by user

Architecture:

- SOA (service oriented) architecture
- Microsoft .Net technology platform

*Optional features available at additional cost.



Further Information:
www.kardex-remstar.com