

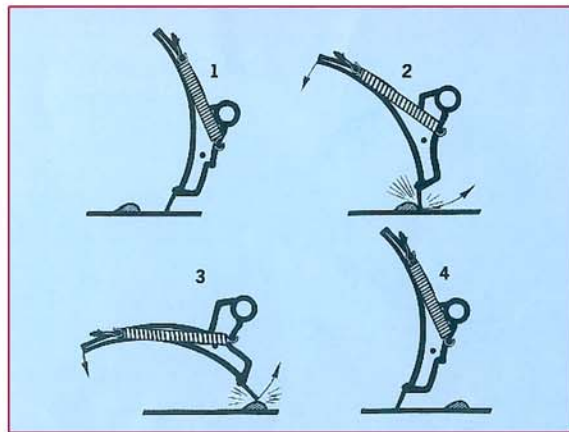


Hojas quitanieves - angulación hidráulica Snow plough blades - hydraulic angling



Características

Specifications



▲ Equipada con un sistema mecánico de muelles para absorber impactos
Equipped with a mechanical system of springs to absorb impacts



▲ Oscilación lateral con autonivelación por muelles
Lateral oscillation with self levelling by springs



▲ Barras de fijación para trabajar como dozer
Fixing bars to work as a dozer

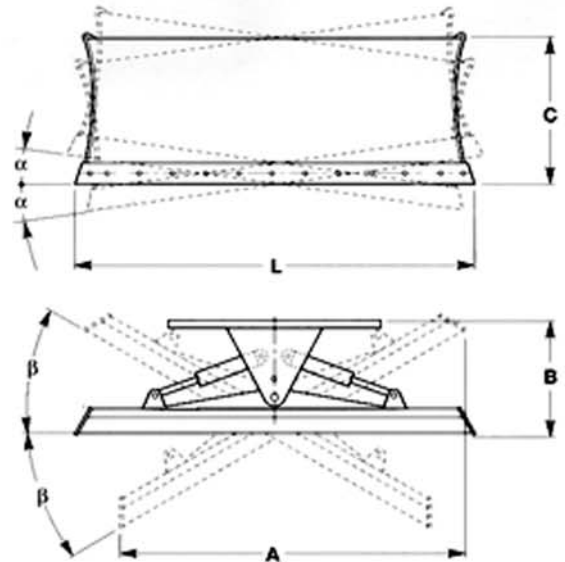
Modelos, datos técnicos e ilustraciones sujetas a cambios sin previo aviso. Models, specifications and illustrations are subject to change without notice.

Características

Specifications



▲ Angulación horizontal hidráulica
Hydraulic horizontal angulation



▲ Sencilla y rápidamente acoplable a una gran cantidad de máquinas
Easily and quickly attached to different machines

Especificaciones Técnicas

Technical features

Modelo Model	L	A	B	C	α	β	Peso
	(mm)	(mm)	(mm)			(Kg)	
SPBH1.1500B	1500	1300	900	700	$\pm 10^\circ$	$\pm 30^\circ$	220
SPBH1.1650B	1650	1400	900	700	$\pm 10^\circ$	$\pm 30^\circ$	250
SPBH1.1800B	1800	1560	900	700	$\pm 10^\circ$	$\pm 30^\circ$	280
SPBH1.2100B	2100	1820	900	700	$\pm 10^\circ$	$\pm 30^\circ$	350
SPBH1.2100C	2100	1820	900	800	$\pm 10^\circ$	$\pm 30^\circ$	380
SPBH1.2400C	2400	2080	900	800	$\pm 10^\circ$	$\pm 30^\circ$	410
SPBH1.2700C	2700	2340	900	800	$\pm 10^\circ$	$\pm 30^\circ$	450



α - Oscilación lateral.
- Lateral oscillation.

β - Angulación horizontal hidráulica.
- Hydraulic horizontal angulation.