

Indice

Gama Perforación

Fresadoras	1.1 - 1.20
de Asfalto, Picas - Series 76" (20 mm)	1.1
de Hormigón, Picas - Series 76" (20 mm)	1.2
Máquinas de Reciclado, Picas - Series 86" (22 mm)	1.3
Portapicas	1.4
Zanjadoras	1.5
Picas - Series 76" (20 mm)	1.7
Picas - Series 86" (22 mm)	1.8
Picas - Series 1" (25,4 mm)	1.10
Picas - Series 1,12" (29 mm)	1.11
Portapicas	1.12
Cimentación y Pilotaje	1.13
Picas - Series 1" (25,4 mm)	1.15
Portapicas	1.16
Cruce Referencias	1.17
	1.18

Garantía de los repuestos BYG

BYG Garantiza todos sus elementos antidesgaste contra toda rotura durante 30 días. Si cualquiera de estas piezas rompe en condiciones normales de trabajo BYG proporcionará unas nuevas sin cargo alguno.

Esta garantía no es aplicable a piezas que hayan sido sujetas a un mal uso, negligencia, accidente, recargadas, mal soldadas o no instaladas de acuerdo con las especificaciones e instrucciones de montaje.

Todas las piezas antidesgaste están sujetas a desgaste y son consumibles.

BYG no asume responsabilidad alguna en daños directos o indirectos en maquinaria, equipos o personal, donde se esté utilizando dicho material.

BYG no asumirá ningún cargo por mano de obra o transporte al sustituir piezas en garantía.

Ningún agente, vendedor, distribuidor o parte implicada tiene autoridad oral o escrita para modificar o cambiar términos de esta garantía.

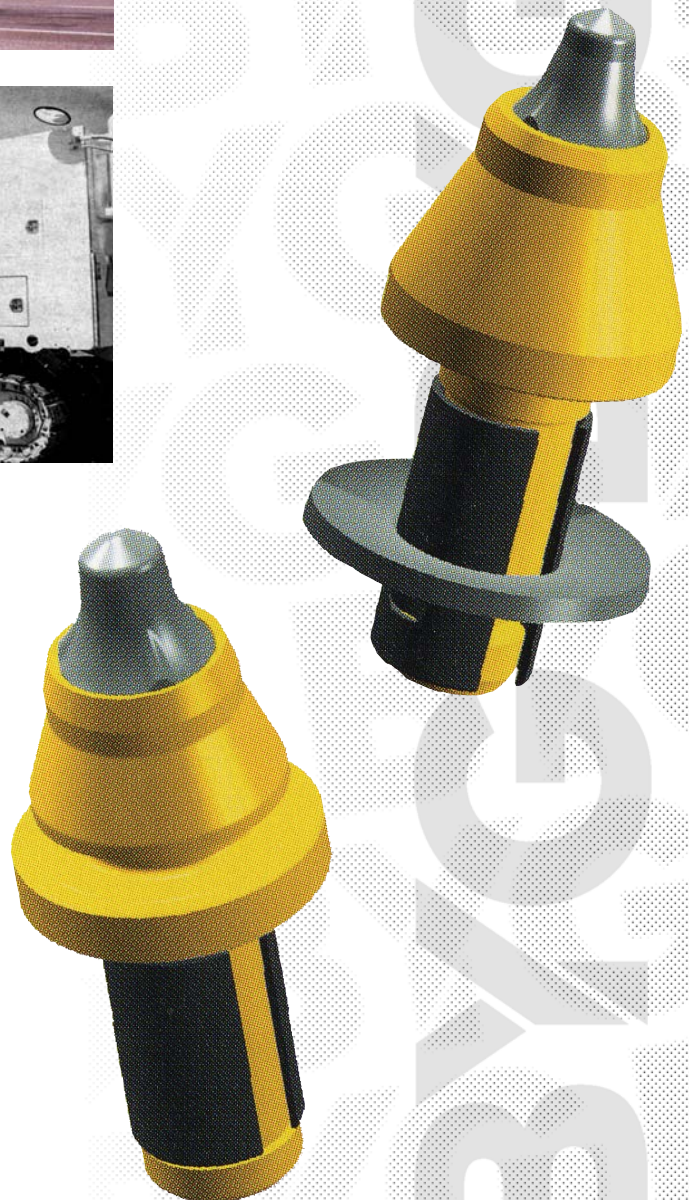
**Referencia en negrita
producto disponible**

*Otras referencias
consúltenos*

Picas y Portapicas



Fresadoras



Picas para Fresadoras de Asfalto - Series 76" (20 mm)

Fig A1

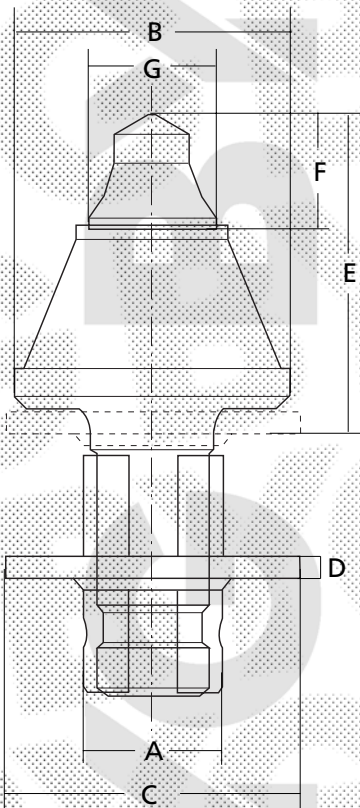


Fig A3

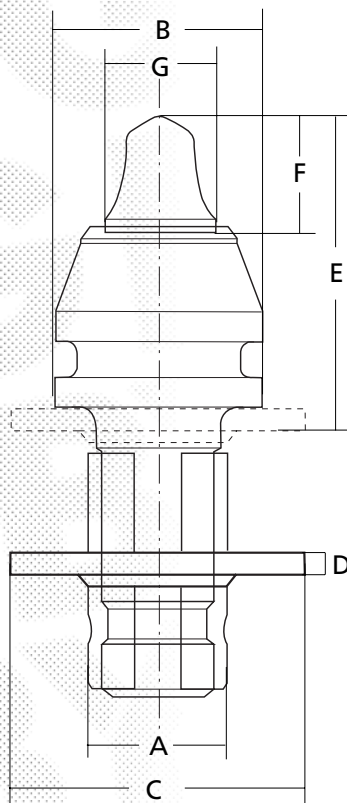
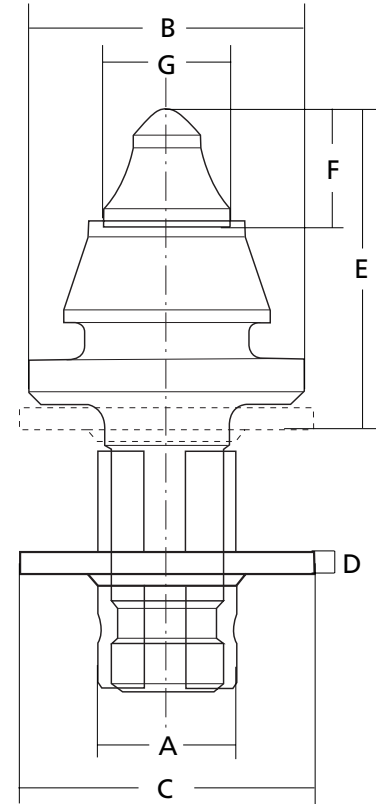
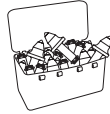


Fig A2

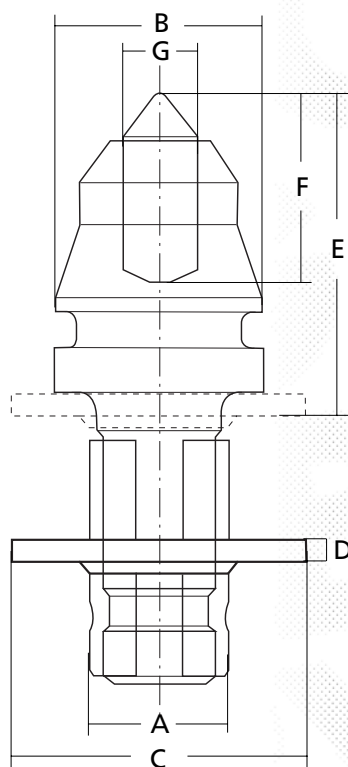



mm

A	B	C	D	E	F	G	Ref	Fig.		Maquina
19,80 0,78	31,80 1,25	44,40 1,75	3,50 0,14	48,90 1,93	16,30 0,64	15,90 0,63	BRP18	A3		50
19,80 0,78	41,90 1,65	44,40 1,75	3,50 0,14	48,90 1,93	17,02 0,67	17,50 0,69	BRP01	A1	Maquina Mediana Tambor 1000 - 1900 mm.	
19,80 0,78	41,90 1,65	44,40 1,75	3,50 0,14	48,30 1,90	17,50 0,69	18,70 0,74	BRP14	A2		
19,80 0,78	31,80 1,25	44,40 1,75	3,50 0,14	48,30 1,90	17,50 0,69	18,70 0,74	BRP24	A3	Maquina Grande Tambor 2000 - 2200 mm.	
19,80 0,78	31,80 1,25	44,40 1,75	3,50 0,14	48,00 1,89	16,30 0,64	17,50 0,69	BRP28	A3		
19,80 0,78	41,90 1,65	44,40 1,75	3,50 0,14	51,00 2,01	20,30 0,80	18,70 0,74	BRP16	A2		
19,80 0,78	41,90 1,65	44,40 1,75	3,50 0,14	48,30 1,90	21,30 0,84	19,00 0,75	BRP19	A1		
19,80 0,78	31,80 1,25	44,40 1,75	3,50 0,14	48,30 1,90	19,00 0,75	18,70 0,74	BRP25	A3		

Picas para Fresadoras de Hormigón - Series 76" (20 mm)

Fig A4



A	B	C	D	E	F	G	Ref.	Fig.		Maquinas
18,80 0,74	31,80 1,25	44,40 1,75	3,50 0,14	48,60 1,91	27,40 1,08	12,20 0,48	BRP21	A4	50	Mango de 19 mm.
19,80 0,78	31,80 1,25	44,40 1,75	3,50 0,14	48,90 1,93	26,20 1,03	<i>BRP22</i>	A4			

Picas para Maquinas de Reciclado - Series 86" (22 mm)

Fig D1

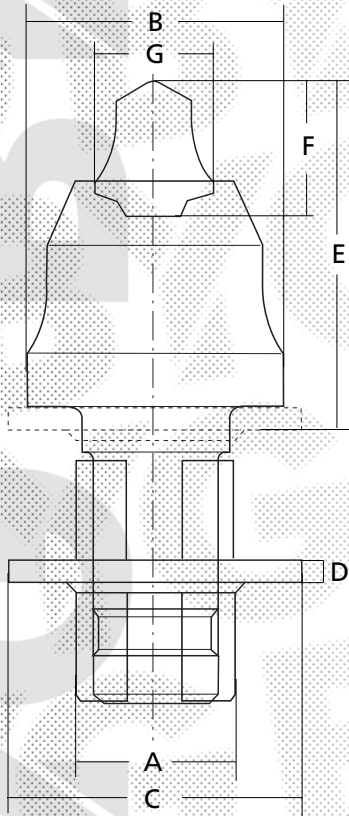
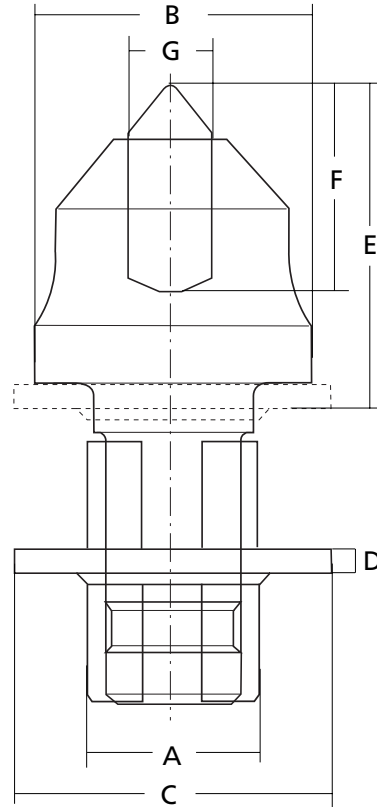
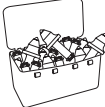
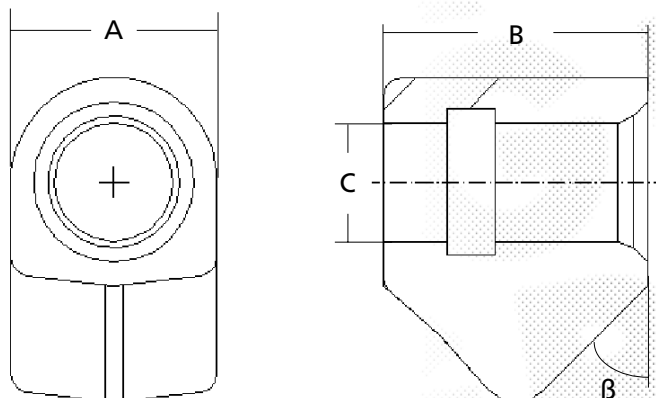



Fig D1a



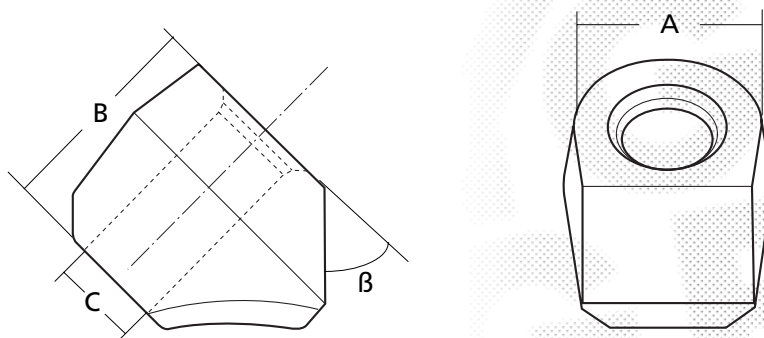
A	B	C	D	E	F	G	Ref.	Fig.		Maquinas
22,40 0,88	38,10 1,50	43,90 1,73	3,50 0,14	52,15 2,05	19,43 0,76	12,22 0,48	<i>BSR02</i>	D1a	50	Mango de 22 mm.
22,40 0,88	38,10 1,50	43,90 1,73	3,50 0,14	52,30 2,06	21,30 0,84	19,10 0,75	BSR03	D1		


Portapicas - Series 76" (20 mm)



A	B	C	β	Ref.		Utilidad
35,05 1,38	44,20 1,74	19,94 0,79	45 °	BC10	60	Mango de 19 mm

Portapicas - Series 86" (22 mm)



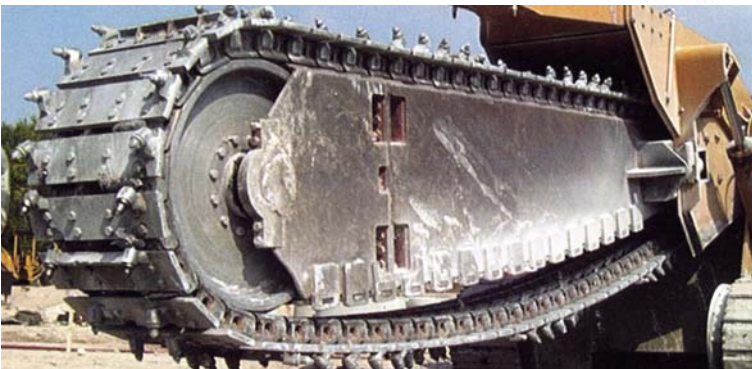
A	B	C	β	Ref.		Utilidad
41,15 1,62	46,99 1,85	22,35 0,88	45 °	BC87HDS	25	Mango de 22 mm



**Referencia en negrita
producto disponible**

*Otras referencias
consúltenos*

Picas y Portapicas



Zanjadoras



Picas - Series 76" (20 mm)

Fig C3

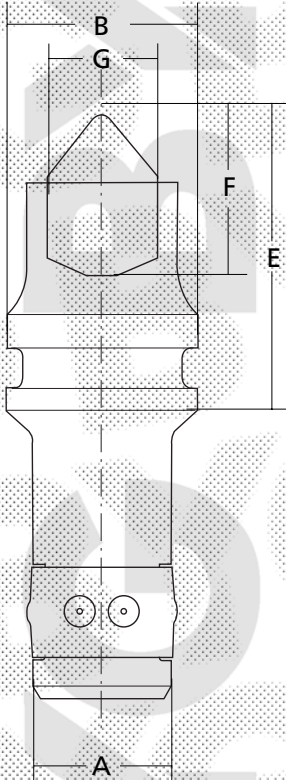


Fig C1

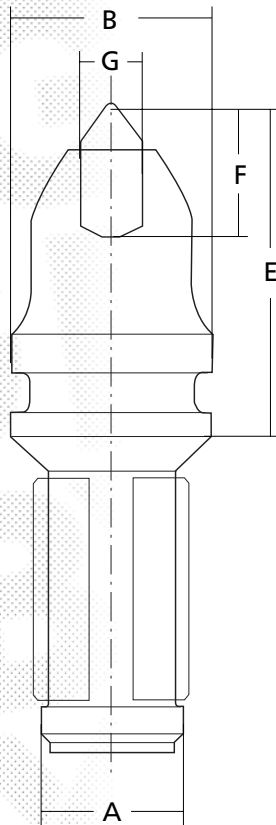
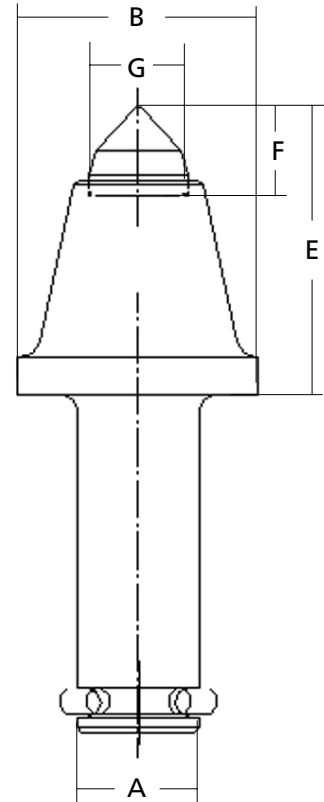
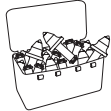


Fig J1



mm							Ref.	Fig.	Reten		Maquina
A	B	C	D	E	F	G					
19,40 0,76	38,10 1,50	-	-	45,33 1,78	13,46 0,53	15,88 0,63	BC3R	J1	1012120	60	Mango de 19 mm.
19,40 0,76	26,90 1,06	-	-	45,33 1,78	18,03 0,71	12,22 0,48	BRL07	C1	-	70	
19,40 0,76	26,90 1,06	-	-	43,07 1,70	13,46 0,53	26,97 1,06	BC3LR	C1	-	100	
19,40 0,76	26,90 1,06	-	-	44,67 1,76	18,03 0,71	12,22 0,48	BRL10	C3	-	75	

Picas - Series 76" (20 mm)

Fig B5

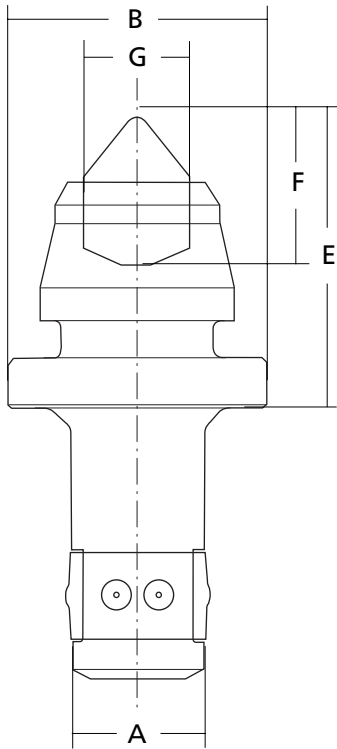
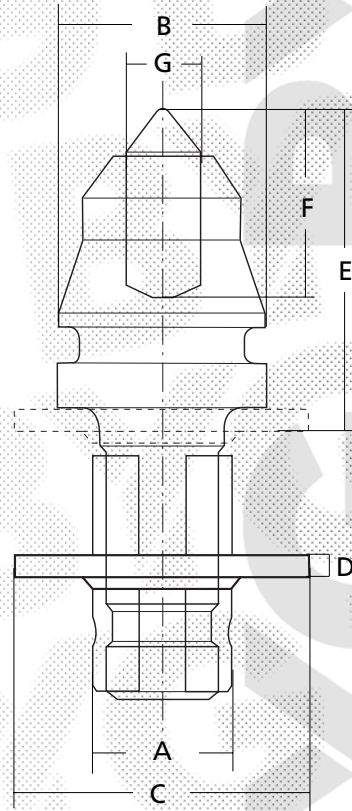



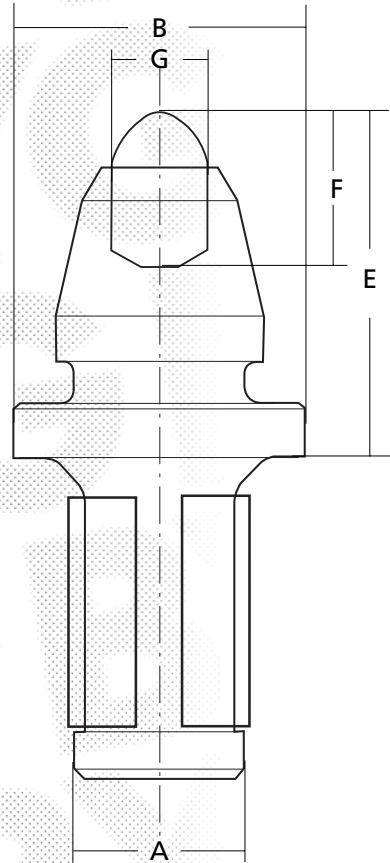
Fig A4

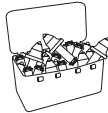


mm							Ref.	Fig.		Maquina
A	B	C	D	E	F	G				
19,40 0,76	38,10 1,50	- -	- -	45,70 1,80	19,90 0,78	12,20 0,48	BRS16	B5	50	
19,80 0,78	31,80 1,25	44,40 1,75	3,50 0,14	48,60 1,91	27,40 1,08	12,20 0,48	BRP21	A4	50	Mango de 19 mm.
19,80 0,78	31,80 1,25	44,40 1,75	3,50 0,14	48,60 1,91	26,20 1,03	9,20 0,36	BRP22	A4	50	

Picas - Series 86" (22 mm)

Fig E1



A	B	C	D	E	F	G	Ref.	Fig.		Maquina
22,40 0,88	38,10 1,50	-	-	45,70 1,80	20,37 0,80	38,10 1,50	BSM06	E1	50	Mango de 22 mm.

Picas - Series 1" (25,4 mm)

Fig G1

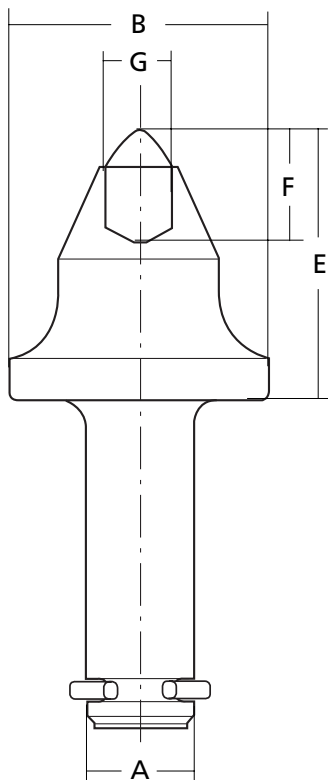


Fig I2

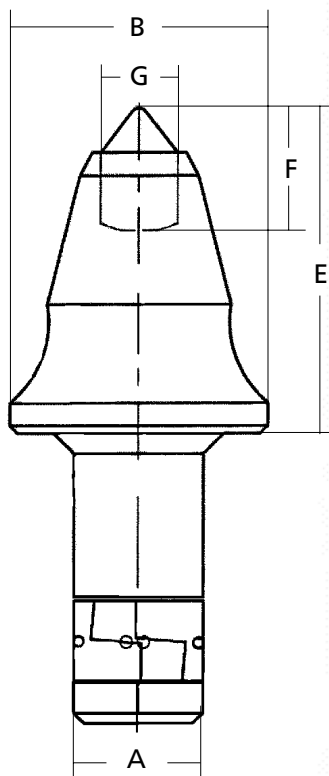


Fig H1

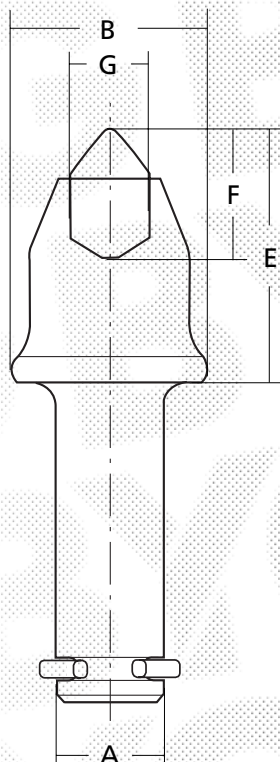
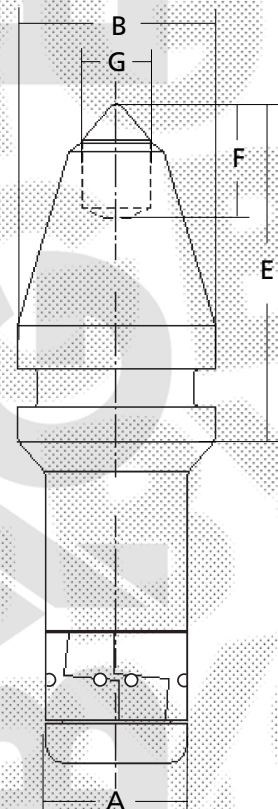









Fig I1



mm							Ref.	Fig.	Retenes		Maquina
A	B	C	D	E	F	G					
25,15 0,99	60,96 2,40	-	-	63,50 2,50	28,16 1,11	14,99 0,59	BT5	G1		-	18
25,15 0,99	60,96 2,40	-	-	63,50 2,50	32,26 1,27	19,30 0,76	BT11	G1	-		18
25,15 0,99	60,96 2,40	-	-	76,20 3,00	32,26 1,27	19,30 0,76	<i>BT12</i>	G1	-		18
25,15 0,99	46,74 1,84	-	-	60,45 2,38	30,23 1,19	18,80 0,74	<i>BC34R</i>	H1		-	15
25,15 0,99	46,74 1,84	-	-	64,52 2,54	26,15 1,03	16,00 0,63	<i>BC35R</i>	H1		-	15
25,15 0,99	33,27 1,31	-	-	61,98 2,44	17,53 0,69	9,14 0,36	BC31	I1	-	-	25
25,15 0,99	33,27 1,31	-	-	60,71 2,39	21,84 0,86	12,22 0,48	BC31HD	I1	-	-	40
25,15 0,99	38,10 1,50	-	-	67,56 2,66	28,16 1,11	14,99 0,59	<i>BU40HD</i>	I1	-	-	25
25,15 0,99	50,00 1,97	-	-	63,50 2,50	23,88 0,94	14,99 0,59	BB40HDS50	I2	-	-	30

Mango de 25 mm

Picas - Series 1,12" (29 mm)

Fig F1

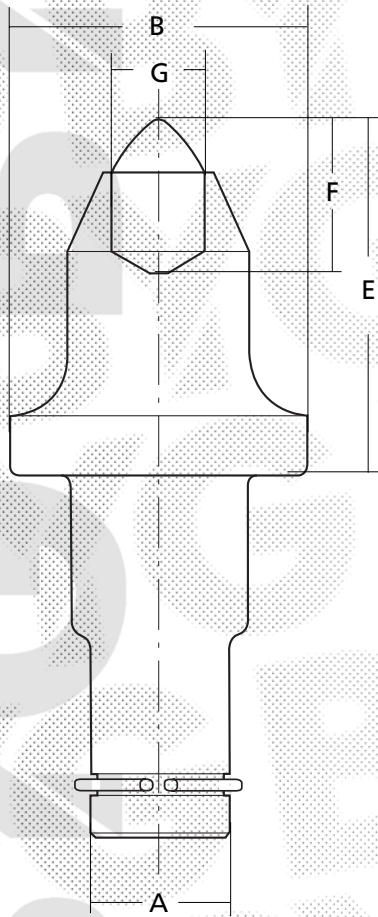
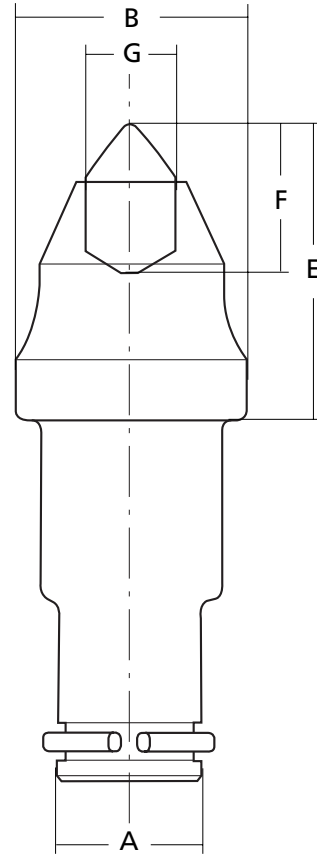
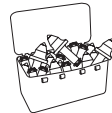
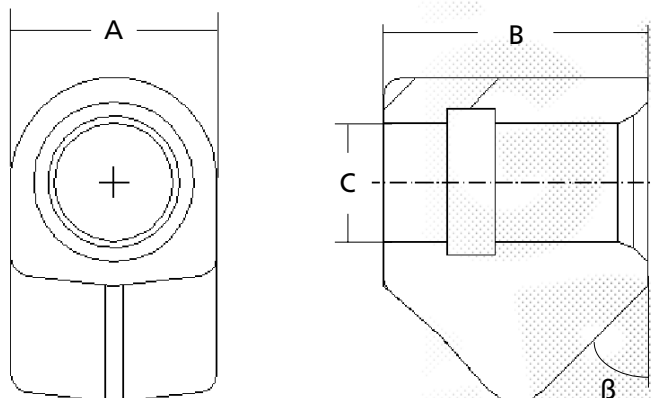



Fig F3



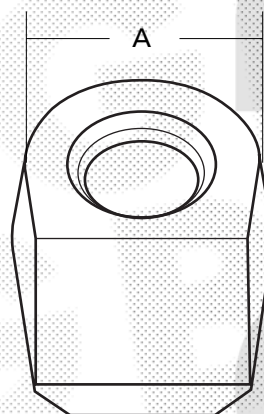
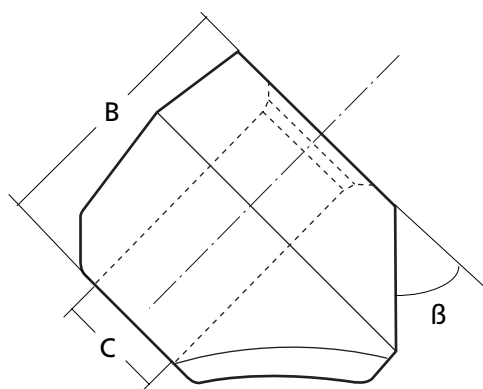
mm							Ref.	Fig.	Reten		Maquina
A	B	C	D	E	F	G					
29,46 1,16	63,50 2,50	-	-	63,50 2,50	32,26 1,27	19,30 0,76	BTS5	F1	1011979	15	Mango de 30 / 38 mm.
29,46 1,16	63,50 2,50	-	-	76,20 3,00	32,26 1,27	19,30 0,76	BTS7	F1		14	
29,46 1,16	63,50 2,50	-	-	63,50 2,50	36,83 1,45	21,84 0,86	<i>BTS9</i>	F1		15	
29,46 1,16	63,50 2,50	-	-	76,20 3,00	36,83 1,45	21,84 0,86	<i>BTS10</i>	F1		14	
29,46 1,16	63,50 2,50	-	-	63,50 2,50	39,37 1,55	24,64 0,97	<i>BTS12</i>	F1		10	
29,46 1,16	63,50 2,50	-	-	76,20 3,00	39,37 1,55	24,64 0,97	<i>BTS13</i>	F1		10	
29,46 1,16	47,75 1,88	-	-	30,23 1,19	30,23 1,19	18,80 0,74	BC7	F3		15	


Portapicas - Series 76" (20 mm)



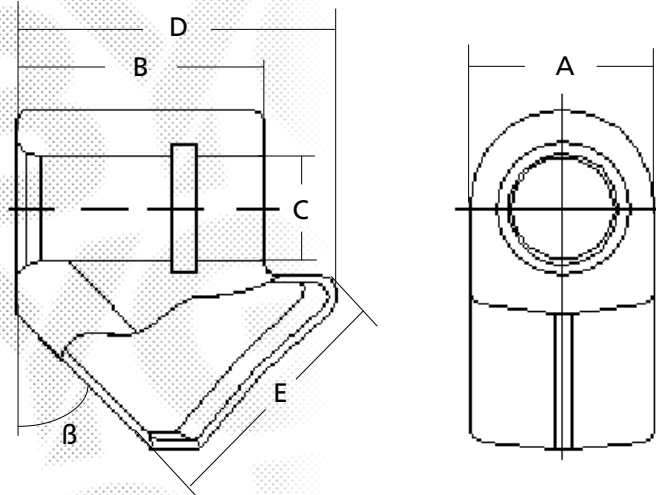
A	B	C	β	Ref.		Utilidad
35,05 <i>1,38</i>	44,20 <i>1,74</i>	19,94 <i>0,79</i>	45 °	BC10	60	Mango de 19 mm.

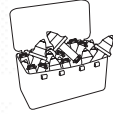
Portapicas - Series 86" (22 mm)



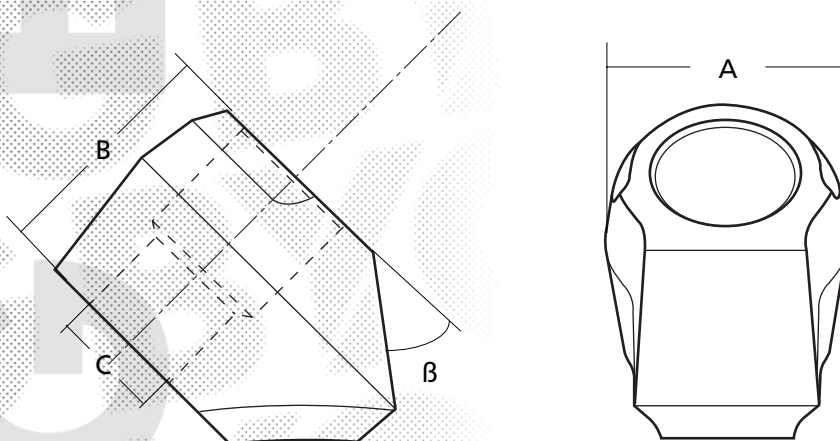
A	B	C	β	Ref.		Utilidad
35,05 <i>1,38</i>	44,20 <i>1,74</i>	19,94 <i>0,79</i>	45 °	BC87HDS	25	Mango de 22 mm.


Portapicas - Series 1" (25,4 mm)



A	B	C	D	E	β	Ref.		Utilidad
44,00 1,73	61,00 2,40	25,60 1,01	79,00 3,11	62,00 2,44	45°	BC30	20	Mango de 25 mm.

Portapicas - Series 1,12" (29 mm)



mm				Ref.		Utilidad
A	B	C	β			
66,55 2,62	64,26 2,53	30,23 1,19	45°	BC4	20	Mango de 30 / 38 mm.

**Referencia en negrita
producto disponible**

*Otras referencias
consúltenos*

Picas y Portapicas

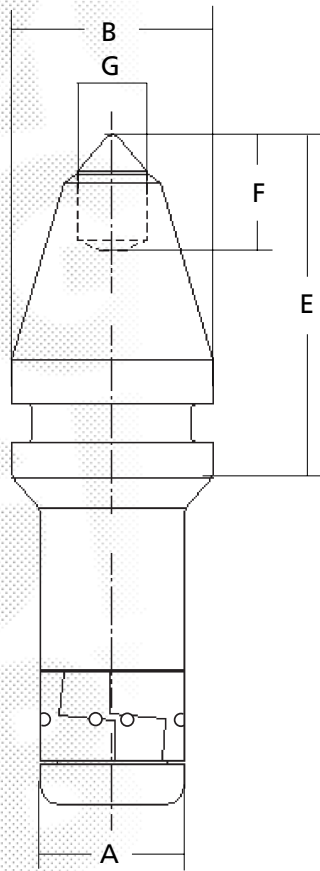


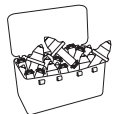
Cimentación y Pilotaje



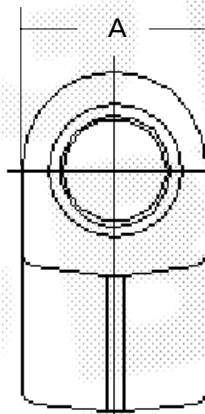
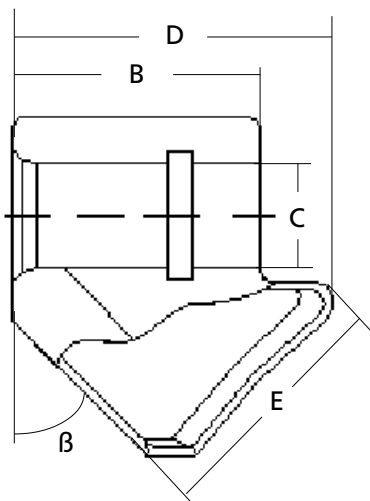
Picas - Series 1" (25,4 mm)


Fig I1



mm							Ref.	Fig.		Maquina
A	B	C	D	E	F	G				
25,15 <i>0,99</i>	33,27 <i>1,31</i>	-	-	61,98 <i>2,44</i>	17,53 <i>0,69</i>	9,14 <i>0,36</i>	BC31	I1	25	
25,15 <i>0,99</i>	33,27 <i>1,31</i>	-	-	60,71 <i>2,39</i>	21,84 <i>0,86</i>	12,22 <i>0,48</i>	BC31HD	I1	40	Mango de 25 mm
25,15 <i>0,99</i>	38,10 <i>1,50</i>	-	-	67,56 <i>2,66</i>	28,16 <i>1,11</i>	14,99 <i>0,59</i>	<i>BU40HD</i>	I1	25	

Portapicas - Series 1" (25,4 mm)



A	B	C	D	E	β	Ref.		Utilidad
35,05 1,38	44,20 1,74	19,94 0,79	79,00 3,11	62,00 2,44	45 °	BC30	20	Mango de 25 mm.

Cruce de Referencias

BETEK

B10
B3
B3KS
B40HDK12,5
B40HDS/50
BC26
BHR05
BHR31
BSH09
BTK03
BTK08
DV25

BYG

BC10
BC3LR
BC3R
BC31HD
BB40HDS50
BC3R
BC10
BC30
BC3LR
BC31HD
BB40HDS50
BC30

BOART

11030028
11050003
13110021
13110028
3312C6501
3816HS4601
RH3-20-W
RH5-25-W
RM5 WHDC

BYG

BC3R
BC31HD
BC10
BC30
BC31HD
BC3R
BC10
BC30
BC31HD

KENAMETAL

1010304
1010742
1010761
1010767
1010787
1010782
1010815
1010910
1012278
1012279
1012290
1317494
1317501
1317507
1317519
1318426
1758414
1758415
1781713

BYG

BC31
BC7
BC4
BC3LR
BC31HD
BRL07
BSM06
BC3R
BC10
BC30
BC87HDS
BSM06
BT11
BT5
BTS5
BTS7
BRP18
BRP19
BRP21

KENAMETAL

1845045
1887014
1971588
2040526
2047904
15P42J
15P43
15P43J
15P43L
1P3F
1P4FJ
78P2
B40HDS50
C10
C1HDLR
C30
C31
C31HD
C34RWC
C3LR
C3R
C4
C7
C7WC
C87BF
C87HDS
RL07
RL08
RP18
RP19
RP21
RP24
RP28
SM06
SR03
T11
T5
TS5
TS5C
TS7
TS7C
U40KH
U40KHD
U43H
U47

BYG

BRP24
BTS5
BTS7
BSR03
BRP28
BTS5
BTS7
BTS7
BTS7
BT5
BT11
BSM06
BB40HDS50
BC10
BRL07
BC30
BC31
BC31HD
BT11
BC3LR
BC3R
BC4
BC7
BTS5
BSM06
BC87HDS
BRL07
BC3LR
BRP18
BRP19
BRP21
BRP24
BRP28
BSM06
BSR03
BT11
BT5
BTS5
BTS5
BTS7
BTS7
BC31
BC31HD
BC4
BC7

Cruce de Referencias

PIGMA GRAND

A30WE-16E
 A34W-20F
 A34WE-12,3D
 A34WEL-12,3D
 A34WL-20F
 C27-12,3D
 C27-16T
 C38N-36T
 D38-19,5
 D48-19,5
 D64-19,5
 DC64-19,5
 D64/77-19,5
 E38EC-12,3D
 F33P-9
 F34P-12,3
 F60N-15,5
 F60N-19,5
 H50P-15,5

BYG

BRP18
BRP19
BRP21
BRP21
BRP19
BRL07
BC3LR
BC3R
BC4
BC7
BTS5
BTS5
BTS7
BSM06
BC31
BC31HD
BT5
BT11
BB40HDS50

VERMER

308000-866
 308000-871
 308000-882
 308000-901
 308000-921
 308000-935
 4418-001
 86121-001
 86126-001

BYG

BC3R
BRL07
BSM06
BT11
BTS7
BC7
BC31
BC31HD
BC4

SANDVIK

990HB
 P90A-2560-35XX

BYG

BC31HD
BC31HD

