

High-Precision, 5-Axis Control Vertical Machining Center

NMV3000 DCG

NMV3000 DCG

NMV3000 DCG HSC



High-precision, 5-axis control vertical machining center that uses DDM on rotary axes and maximizes your productivity

The machine features an optional large-capacity AWC (Automatic Workpiece Changer) and a variety of tool storage capacities, allowing long-term, unmanned operation, as well as high-efficiency machining for multi-item, small-lot production. The NMV3000 DCG answers the demand for high-precision, high-efficiency machining of small, complex workpieces, which has mainly come from the automobile and aircraft industries.



NMV3000 DCG

Features of machine

Basic structure

Travel

Spindle

X-axis **500** mm (19.7 in.) Y-axis **350** mm (13.8 in.)

Z-axis **510** mm (20.1 in.)

Table

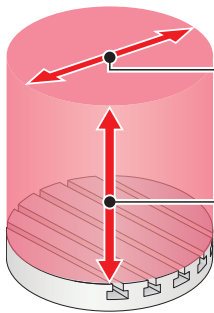
B-axis **+160° — -180°**

C-axis **360°**

Rapid traverse rate

X/Y-axis **50** m/min (164.1 fpm)

Z-axis **40** m/min (131.2 fpm)



Max. workpiece swing diameter

φ 350 mm (φ 13.7 in.)

Max. workpiece height

300 mm (11.8 in.)

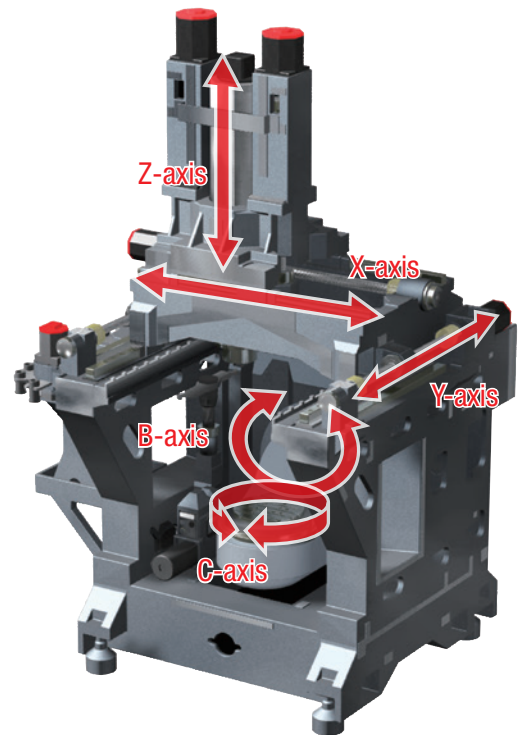


Table loading capacity

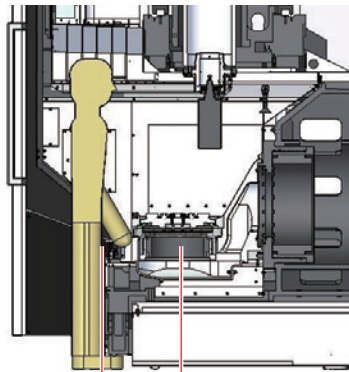
100 kg (220 lb.)

AWC: **80** kg (176 lb.) **OP**

Improved workability

Access to the table

The overhead crane can be brought to the table center. The distance from the front of the machine to the center of the table is 400 mm (15.7 in.), which enables users to easily attach and remove workpieces.



400 mm (15.7 in.)

Maintenance

Centralized layout of devices

Pneumatic/hydraulic equipment is placed on the right side of the machine for easier maintenance.



ATC/Tool magazine

■ Tool-to-tool

1.8 sec.

■ Chain-type

		NMV3000 DCG				
Tool storage capacity		21 [61] [91] [121] [181]				
Max. tool diameter	With adjacent tools	mm (in.)	φ 90 (φ 3.5)			
	Without adjacent tools	mm (in.)	φ 125 (φ 4.9)			
Max. tool length		mm (in.)	300 (11.8)			
Max. tool mass		kg (lb.)	8 (17.6)			
Max. tool moment		N·m (ft·lbf)	11 (8.1)			

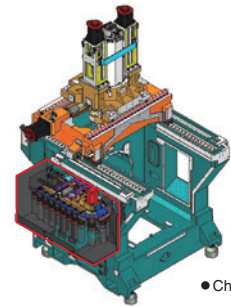
[] Option

■ Rack-type

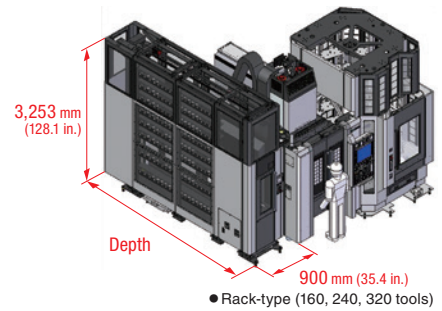
		NMV3000 DCG				
Tool storage capacity	Total	[160]	[240]	[300]*	[320]	
	φ 70×300 mm (φ 2.8×11.8 in.)	—	—	284	—	
	φ 90×150 mm (φ 3.5×5.9 in.)	85	135	—	185	
	φ 90×300 mm (φ 3.5×11.8 in.)	51	81	—	111	
	φ 125×150 mm (φ 4.9×5.9 in.)	15	—	—	15	
	φ 125×300 mm (φ 4.9×11.8 in.)	9	15	15	9	
Max. tool mass		kg (lb.)	8 (17.6)			
Depth		mm (in.)	4,014 (158.0)	5,064 (199.4)	2,279 (89.7)	6,114 (240.7)

[] Option

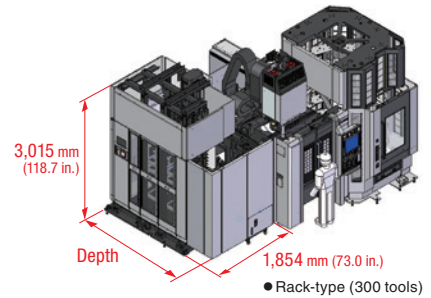
* A pot transfer type magazine is used. The tool storage capacity includes a tool mounted in the spindle.



● Chain-type



● Rack-type (160, 240, 320 tools)



● Rack-type (300 tools)

AWC

OP

Long-term operation is possible by using the large capacity AWC (Automatic workpiece changer).

■ Workpiece changing time

28 sec.

■ AWC size (Width × Depth)

1,595 mm × 2,340 mm (62.8 in. × 92.1 in.)

■ Workpiece size

		NMV3000 DCG				
AWC (stations)		34	120	114 (flexible)* ¹		
Max. workpiece diameter	Without adjacent workpieces	mm (in.)	φ 350 (φ 13.7)	—	φ 350 (φ 13.7)	—
	With adjacent workpieces	mm (in.)	—	φ 230 (φ 9.0)	—	φ 230 (φ 9.0)
Max. workpiece height		mm (in.)	300 (11.8)	150 (5.9)* ²	300 (11.8)* ³	150 (5.9)* ⁴
Workpiece mass		kg (lb.)	80 (176)	50 (110)	80 (176)	50 (110)

*¹ When the workpiece size is φ 230×150 mm (φ 9.0×5.9 in.), the 114-station AWC can hold up to 114 workpieces. Note, however, that the storage capacity may differ depending on the workpiece restrictions such as *³ and *⁴.

*² There are restrictions on the shape of the workpiece when the height is 105 mm (4.1 in.) or more.

*³ There are restrictions on the shape of the workpiece when the height is 95 mm (3.7 in.) or more.

*⁴ There are restrictions on the shape of the workpiece when the height is 10 mm (0.4 in.) or more.

For details, please consult with our sales representative.



Allows long-term unmanned operation

Shortened Setup times

Original technology



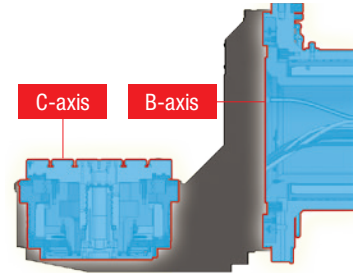
Direct Drive Motor



Transmitting the drive power directly to the rotary axes without using gears eliminates backlash. Compared with conventional worm gear systems, this dramatically improves transmission efficiency and offers high-speed feed.

■ Effects of DDM

- High-speed rotation
- High-precision indexing
- Less maintenance
- Longer product life



Driven at the Center of Gravity



Our DCG technology controls vibration, which is one of the main enemies of high speed and high precision, by driving structural parts at their center of gravity.

■ Max. acceleration

X-axis **0.46 G** {4.5 m/s²}

Y-axis **0.37 G** {3.6 m/s²}

Z-axis **0.50 G** {4.9 m/s²}

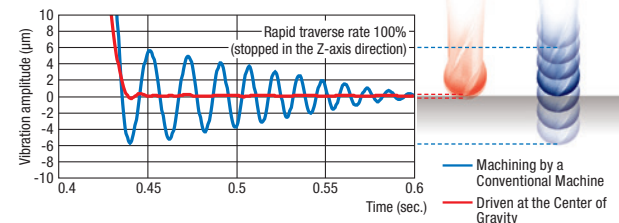
■ Effects of DCG

- Improved surface quality
- Outstanding acceleration
- Improved roundness
- Longer tool life

Vibration controlled

For positioning, machines with DCG virtually eliminate vibration, while machines without DCG continue to vibrate for a long time. It controls the rotational vibration which appears at every acceleration start point, and which is proportional to the distance between the drive point and the center of gravity. This prevents deterioration of the quality of the machined surface.

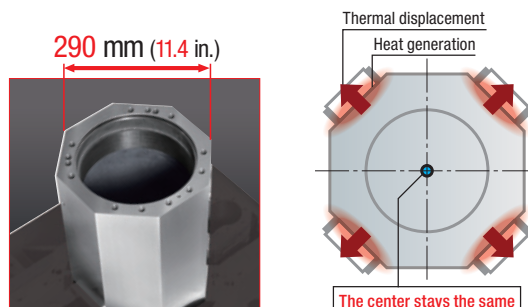
■ Residual vibration comparison



Octagonal Ram Construction



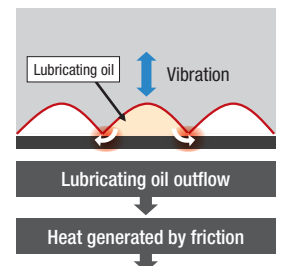
The 4 guideways are located diagonally from each other, so they distort symmetrically in response to the heat generated by high-speed travel. This means that the center stays in the same position, offering high-speed, high-precision feed.



■ Effects of ORC

- Superior damping characteristics
- Controls thermal displacement
- Achieves high-speed, high-precision feed

Square guides' excellent damping characteristics



The lubricating oil in the oil pockets which were made by scraping is forced in and out through the gaps because of the contact pressure caused by vibration, generating heat. || Vibration is reduced by converting vibrational energy into heat energy. This helps control chattering caused by vibration.

Mechanism

Spindle

The DDS motor extracts full power across a wide range, from high-speed machining to heavy-duty cutting.

■ Max. spindle speed

12,000 min⁻¹

20,000 min⁻¹ **OP**

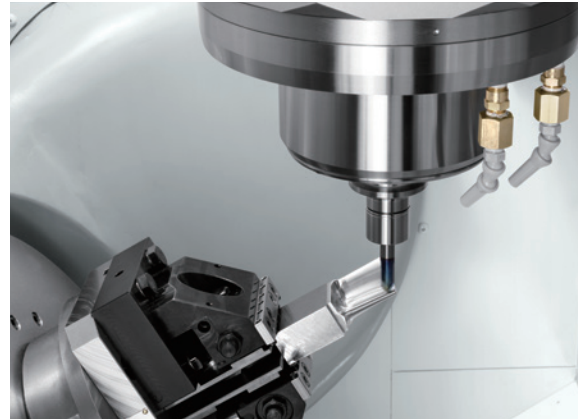
■ Spindle acceleration time

1.92 sec. (0→12,000 min⁻¹)

■ Spindle deceleration time

1.60 sec. (12,000→0 min⁻¹)

● Please use a dual contact tool when using a No. 40 taper spindle at 15,000 min⁻¹ or higher.



Table

■ B-axis max. rotational speed

50 min⁻¹

■ C-axis max. rotational speed

150 min⁻¹

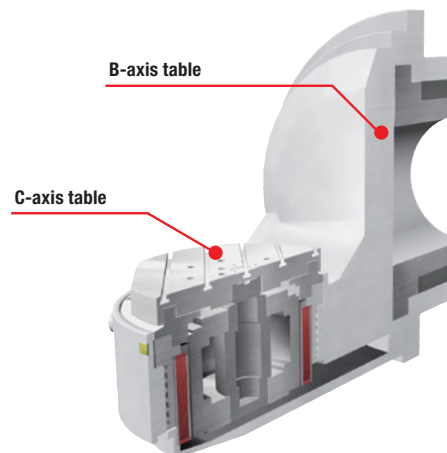
2,000 min⁻¹ **OP**
(Turning specifications)

■ Table working surface

φ 350 mm
(**φ 13.8** in.)

■ Table-in-Table Construction

The Table-in-Table Construction, in which the C-axis table is placed within the B-axis table, has been adopted. Its highly rigid structure allows stable machining accuracy.



● When the C-axis rotates, unbalanced weight of the workpiece (including fixtures) on the table causes vibration, so it may not be possible to rotate at the required speed. In that case, it is necessary to adjust the balance of the workpiece by adding weights to the fixtures.

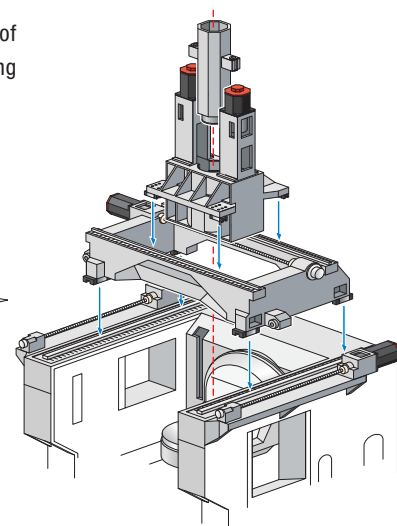
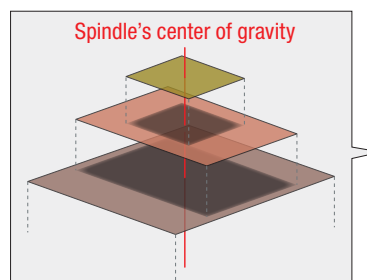
Top Box-in-Box Construction

The machine uses the top Box-in-Box Construction that guides and drives the center of gravity of the moving parts with excellent balance. It also improves servo motor's responsiveness, making unprecedented speed and acceleration possible.

Stable accuracy due to the heat-symmetrical structure

Support structure with no overhang

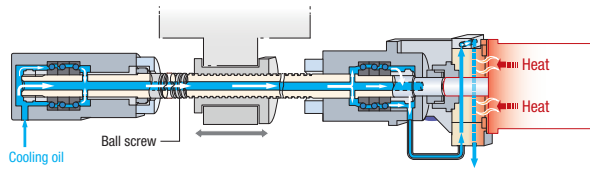
Less affected by temperature variations caused by chips or coolant



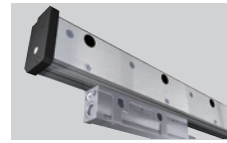
High-precision equipment

Ball screw core cooling

The ball screw core cooling system circulates cooling oil through the support bearings, maintaining high-precision machining.



Direct scale feedback



Magnescale

Resolution
0.01 μm

An absolute magnetic linear scale (full closed-loop control) made by Magnescale is equipped as standard to offer high-precision positioning.

- High accuracy, high resolution
- Highly resistant to condensation and oil
- Greater accuracy than optical scale
- Vibration and impact resistant characteristics
- X-, Y-, Z-axis: Option

Coolant cooling system (separate type)

OP

Raised coolant temperature causes thermal displacement in the fixtures and workpiece, affecting the machining accuracy of the workpiece. Use this unit to prevent the coolant from heating up. **When using oil-based coolant**, the coolant temperature can become extremely high even with the standard coolant pump, so please be sure to select this unit.

When using oil-based coolant, please be sure to consult with our sales representative.

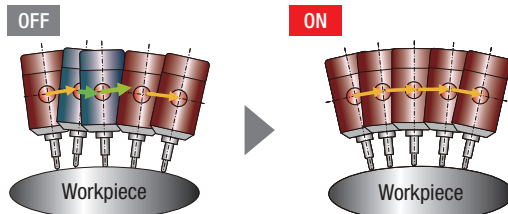
- We cannot guarantee that this unit will completely control the coolant temperature. It is designed to help prevent oil temperature increases.



SVC function (Standard feature for F31iA5)

The SVC function, in which the program commands for tool tip control are read in advance and compensation is automatically applied to achieve smooth tool feed, is equipped as standard. By combining this function with DDM (Direct Drive Motor), the machine offers greatly improved surface quality and reduced cycle time during 5-axis machining.

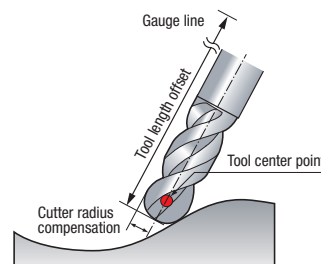
Motion of the SVC function



The SVC function includes the following functions:

- AI contour control II
- Nano smoothing II
- Smooth TCP
- Machining mode selection
- G332 tolerance command

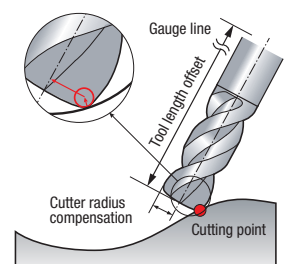
Tool center point control/Cutting point command* (Standard features for F31iA5)



Tool center point control

Main features

- The tool path can be controlled from the tool center point.
- No reprogramming is needed when the tool length and the tool diameter are changed.
- NC automatically calculates cutter radius compensation and tool length offsets based on the program commands for tool tip control.



Cutting point command*

Main features

- The tool path can be controlled from the cutting point.
- By using cutting point commands, machining using radius end mills or square end mills can be performed without reprogramming when tool length, cutter radius or tool tip corner R are changed.

* Cutting point command is available as standard for the turning specification only.

Peripheral equipment

External chip conveyor

OP

Two types of chip conveyor have been made available for selection based upon chip shape and material. Please choose one suited to the type of machining you conduct.

Specifications	Workpiece material and chip size ◎: Optimum ○: Suitable ×: Not suitable						
	Steel			Cast iron	Aluminum, non-ferrous metal		
	Long	Short	Powdery	Short	Long	Short	Powdery
Hinge type + Drum filter type	○	○	○	○	○	○	○
Scraper type + Drum filter type	×	○	○*	○	×	○	○
Magnet scraper type + Drum filter type	×	◎	◎	◎	×	×	×

Chip size guidelines

Short: chips 50 mm (2.0 in.) or less in length, bundles of chips $\phi 40$ mm ($\phi 1.6$ in.) or less

Long: bigger than the above

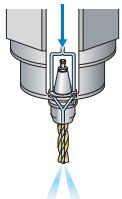
* Please use a steel filter

- The chip conveyor is rear disposal only.
- The options table below the general options when using coolant. Changes may be necessary if you are not using coolant, or depending on the amount of coolant, compatibility with machines, or the specifications required.
- Please select a chip conveyor to suit the shape of your chips.
When using special or difficult-to-cut material (chip hardness HRC45 or higher), please consult with our sales representative.
- We have prepared several options for different chip shapes and material. For details, please consult with our sales representative.

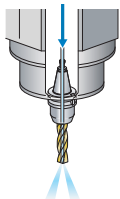
Through-spindle coolant system

OP

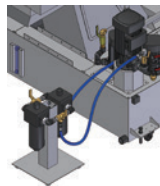
The through-spindle coolant system effectively eliminates chips, cooling the machine point and lengthening the lives of your tools.



Side through



Center through

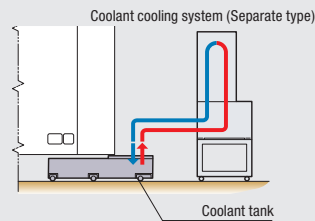
High-pressure coolant system
(separate type)High-pressure coolant system
(unit on coolant tank)

- Side through (option) is available only with the NMV3000 DCG.

Recommended equipment

Coolant cooling system (separate type)

The high-pressure coolant system generates a lot of heat because it discharges coolant at high pressure. The coolant cooling system controls the temperature of the coolant and suppresses temperature increases in the workpiece, tools and table, ensuring stable machining accuracy. This is essential equipment when using high-pressure coolant. A unit with a heater will be customized.



MAPPS IV

High-Performance Operating System
for Machining Centers



● 19-inch operation panel

High-performance operating system that pursues ease of use, and combines the best hardware in the industry with the advanced application/network systems.

- ▶ Outstanding operability thanks to upgraded hardware
- ▶ Enhanced functionality by using CAM software
- ▶ New functions for easier setup and maintenance
- ▶ Various types of monitoring, including internal monitoring, are possible on the screen (option)
- ▶ In the event of trouble, DMG MORI SEIKI's remote maintenance service solves it smoothly **MORI-NET Global Edition Advance**

Outstanding operability

Vertical soft-keys

Vertical soft-keys are arranged on the left and right sides of the screen. The vertical soft-keys can be used as option buttons or shortcut keys to which you can assign your desired screens and functions, allowing you to quickly display the screen you want.

Keyboard

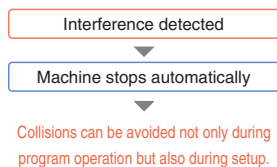
A PC-type keyboard is used as standard, making key input easy. A keyboard with a conventional key layout is also available as an option.



Functions for multi-axis machining

3D interference checking function

Checks for interference in 3D for spindles, tables, tools, workpieces and fixtures. If interference is detected, the machine will stop operation regardless of whether it is in the automatic or manual mode, providing the highest level of protection against interference.

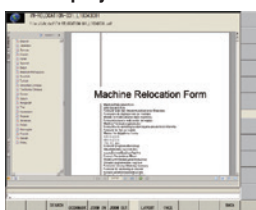


- The 3D interference checking function will check for interference accurately as long as the 3D model exactly matches the actual configuration of the spindles, tables, tools, workpieces and fixtures.
- Customized design is required for special shape. For details, please refer to the description of "3D interference checking function" in the NC control unit specifications.
- A cutting simulation that shows how material is removed as machining proceeds cannot be carried out during a 3D interference check.

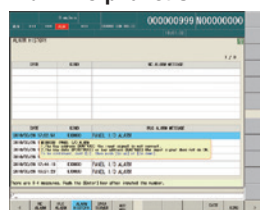
Improved ease of setup and maintenance

MAPPS IV is packed with new functions for easier setup and maintenance, including the File Display and Memo function that displays operating instructions and manuals on the screen and the Alarm help function that provides instructions when alarms occur.

File display and Memo function



Alarm help function



Faster creation of programs

CAM software

ESPRIT® allows you to create complex 3D programming with high-added value. By just installing the software on your PC with connection to LAN, you will be able to use it. (Once the software is started on the computer, it can be used for up to 7 days without LAN connection.)

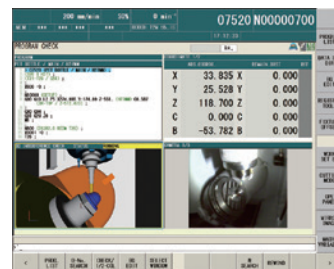
- Postprocessor as standard
- CAM software will be ready to use once your machine is installed
- Cost for introducing CAM software can be saved
- ESPRIT® data can be modified on the machine (through Remote Desktop connection*)
- The software can be installed on multiple PCs on the network (It cannot be simultaneously started up on more than one PC)
- 2-year warranty support (including free update)

* Applicable Operating Systems: Windows Vista Business/Ultimate, Windows 7 Professional/Ultimate
● A PC is required to use ESPRIT®. Please prepare PCs by yourself.

Improved work efficiency

Fixed-point in-machine camera **Consultation is required**

Images taken by cameras installed inside/outside the machine can be viewed on the programming screen. This function is useful for maintenance.



Examples of camera locations

- Inside machine (to check machining)
- Tool magazine (to check cutting tools)
- Chip bucket (to check chip accumulation)

Machine specifications

Item				NMV3000 DCG NMV3000 DCG HSC	
Travel	X-axis travel <longitudinal movement of spindle head>		mm (in.)	500 (19.7)	
	Y-axis travel <cross movement of saddle>		mm (in.)	350 (13.8)	
	Z-axis travel <vertical movement of ram>		mm (in.)	510 (20.1)	
	Distance from table surface to spindle gauge plane <horizontal table position>		mm (in.)	150–660 (5.9–26.0) [AWC: 125–635 (4.9–25.0)]	
	B-axis travel			+160° – –180°	
	C-axis travel			360°	
Table	Height from the floor to the upper face of the table (Pallet)		mm (in.)	850 (33.5) [AWC: 875 (34.4)]	
	Table working surface		mm (in.)	φ 350 (φ 13.8)	
	Table (Pallet) loading capacity		kg (lb.)	100 (220) [AWC: 80 (176)]	
	Table (Pallet) surface configuration			14 mm (0.6 in.) T-slot ×5	
	Max. workpiece swing diameter		mm (in.)	φ 350 (φ 13.7) [AWC: φ 230 (φ 9.0)]	
	Max. workpiece height		mm (in.)	300 (11.8)	
	Rotational speed of the table	B-axis	min ⁻¹	50	
C-axis		min ⁻¹	150 [2,000]		
Spindle	Max. spindle speed		min ⁻¹	12,000 [20,000]	
	Type of spindle taper hole			No. 40 [HSK-A63]	
Feedrate	Rapid traverse rate		mm/min (ipm)	X, Y: 50,000 (1,968.5) Z: 40,000 (1,574.8)	
	Cutting feedrate	With AI contour control	mm/min (ipm)	X, Y: 50,000 (1,968.5) Z: 40,000 (1,574.8)	
			min ⁻¹	B: 50 C: 150	
		Without AI contour control	mm/min (ipm)	X, Y, Z: 6,000 (236.2)	
			min ⁻¹	B, C: 16.66	
	Jog feedrate		mm/min (ipm)	X, Y, Z: 0–5,000 (0–196.9)	
			min ⁻¹	B, C: 0–13.88	
ATC	Type of tool shank			BT40* [CAT40] [DIN40] [HSK-A63]	
	Type of retention knob			DMG MORI SEIKI 90° [45° (MAS-I)] [60° (MAS-II)]	
	Tool storage capacity			21 [61] [91] [121] [160] [181] [240] [300] [320]	
	Max. tool diameter	With adjacent tools	mm (in.)	φ 90 (φ 3.5)	
		Without adjacent tools	mm (in.)	φ 125 (φ 4.9)	
	Max. tool length		mm (in.)	300 (11.8)	
	Max. tool mass		kg (lb.)	8 (17.6)	
	Max. tool mass moment		N·m (ft·lbf)	11 (8.1)	
	Method of tool selection			Fixed address	
Tool changing time		Tool-to-tool	sec.	1.8	
Motors	Spindle drive motor	12,000 min ⁻¹	kW (HP)	18.5/15 (24.7/20) <30 min./cont>	
		[12,000 min ⁻¹ <high output>]	kW (HP)	[22/18.5 (30/24.7) <15 min./cont>]	
		[HSC: 20,000 min ⁻¹ <high-speed>]	kW (HP)	[22/11 (30/15) <15 min./cont>]	
		[HSC: 20,000 min ⁻¹ <high-speed-high output>]	kW (HP)	[22/18.5 (30/24.7) <15 min./cont>]	
	Feed motor		kW (HP)	X: 4 (5.3) Y: 3 (4.0)×2 Z: 3 (4.0)×2	
	B-axis table	50 min ⁻¹	kW (HP)	6.5 (8.7)	
	C-axis table	150 min ⁻¹	kW (HP)	3.5 (4.7)	
[2,000 min ⁻¹]		kW (HP)	[26 (34.7)]		
Coolant pump motor		kW (HP)	1.2 (1.6)		
Power sources (Standard)	Electrical power supply <cont>		194271805 kVA	45.6	
	Compressed air supply		MPa (psi), L/min (gpm)	0.5 (72.5), 500 (132.0) <ANR>	
Tank capacity	Coolant tank capacity		L (gal.)	750 (198.0)	
Machine size	Machine height <From floor>		mm (in.)	3,250 (128.0)	
	Floor space <Width × Depth>		mm (in.)	2,337×3,782 (92.0×148.9) <excluding chip conveyor>	
	Mass of machine		kg (lb.)	9,400 (20,680)	
Noise data	A-weighted, time-average radiated sound pressure level		dB	57–73 (measurement uncertainty is 4 dB)	

[] Option

NMV3000 DCG (130726)

* When selecting the two-face contact tool specification, be sure to use a two-face contact tool.

- If you select a spindle speed of 20,000 min⁻¹ the machine name will be the NMV3000 DCG HSC.
- Max. spindle speed: Depending on restrictions imposed by the workpiece clamping device, fixture and tool used, it may not be possible to rotate at the maximum spindle speed.
- Please use a dual contact tool when using a No. 40 taper spindle at 15,000 min⁻¹ or higher.
- A tool with a mass moment greater than the maximum tool mass moment may cause problems during ATC operations even if it satisfies other conditions.
- Compressed air supply: Please be sure to supply clean compressed air <air pressure: 0.7 MPa (101.5 psi), pressure dew point: 10°C (50°F) or below>.
- A criterion capacity to select a compressor is 90 L/min (23.8 gpm) per 0.75 kW (1 HP).

However, this figure may differ depending on the type of compressors and options attached. For details, please check the compressor specifications.

- When the tool tip air blow is regularly used, air supply of more than 300 L/min (79.2 gpm) is separately required.
- ANR: ANR refers to a standard atmospheric state; i.e., temperature at 20°C (68°F); absolute pressure at 101.3 kPa (14.7 psi); and relative humidity at 65%.
- Power sources, Machine size: the actual values may differ from those specified in the catalogue, depending on the optional features and peripheral equipment.
- If you select the turning specification, the through-spindle coolant system is a center-through type only.

Please note that to attach turning tools, either a BT or HSK tool holder (two-face contact), which we have prepared according to machine specifications, is required.

- When the C-axis rotates, unbalanced weight of the workpiece (including fixtures) on the table causes vibration, so it may not be possible to rotate at the required speed.

In that case, it is necessary to adjust the balance of the workpiece by adding weights to the fixtures.

- Noise data: the measurement was performed at the front of the NMV3000 DCG machine with a maximum spindle speed of 12,000 min⁻¹. For details, please consult with our sales representative.
- The information in this catalog is valid as of January 2014.

DMG MORI

2-year warranty, twice the peace of mind.

For machines delivered outside of Japan, parts relating to machine breakdown will be guaranteed free for 2 years from the date of installation, and labor costs to repair will be free for 1 year. Please contact our sales representative for details.



<Precautions for Machine Relocation>

EXPORTATION: All contracts are subject to export permit by the Government of Japan. Customer shall comply with the laws and regulations of the exporting country governing the exportation or re-exportation of the Equipment, including but not limited to the Export Administration Regulations. The Equipment is subject to export restrictions imposed by Japan and other exporting countries and the Customer will not export or permit the export of the Equipment anywhere outside the exporting country without proper government authorization. To prevent the illegal diversion of the Equipment to individuals or nations that threaten international security, it may include a "Relocation Machine Security Function" that automatically disables the Equipment if it is moved following installation. If the Equipment is so-disabled, it can only be re-enabled by contacting DMG MORI SEIKI or its distributor representative. DMG MORI SEIKI and its distributor representative may refuse to re-enable the Equipment if it determines that doing so would be an unauthorized export of technology or otherwise violates applicable export restrictions. DMG MORI SEIKI and its distributor representative shall have no obligation to re-enable such Equipment. DMG MORI SEIKI and its distributor representative shall have no liability (including for lost profits or business interruption or under the limited service warranty included herein) as a result of the Equipment being disabled.

- DCG, DDM, BMT and ORC are trademarks or registered trademarks of DMG MORI SEIKI CO., LTD. in Japan, the USA and other countries.
- If you have any questions regarding the content, contact our sales representative.
- The information in this catalog is valid as of January 2014. Designs and specifications are subject to changes without notice.
- The machines shown in the catalog may differ from the actual machines. The location and the size of the nameplates may also differ from the actual machines, or the nameplates may not be attached to some machines.
- DMG MORI SEIKI is not responsible for differences between the information in the catalog and the actual machine.

DMG MORI SEIKI CO., LTD.

Nagoya Head Office

☐ 2-35-16 Meieki, Nakamura-ku, Nagoya City, Aichi 450-0002, Japan

Phone: +81-52-587-1811

Tokyo Branch

☐ 18th floor, Shinagawa Intercity Tower A, 2-15-1 Konan Minato-ku, Tokyo 108-6018, Japan

Phone: +81-3-5460-3570

Nara Campus Nara No. 1 Plant

☐ 362 Idono-cho, Yamato-Koriyama City, Nara 639-1183, Japan

Phone: +81-743-53-1121

Nara No. 2 Plant

☐ 106 Kita-Koriyama-cho, Yamato-Koriyama City, Nara 639-1160, Japan

Phone: +81-743-53-1125

Iga Campus

☐ 201 Midai, Iga City, Mie 519-1414, Japan

Phone: +81-595-45-4151

Chiba Campus

☐ 488-19 Suzumi-cho, Funabashi City, Chiba 274-0052, Japan

Phone: +81-47-410-8800

NMV3000-EB02V

V.1402.CDT.0000

Created in Japan