

# UNILAS Touch

Laser CO<sub>2</sub>

## Perfil de la compañía

*Limmer Laser GmbH* es una compañía alemana, especializada en el diseño, fabricación y venta de láseres médicos y sus accesorios. Nuestros productos cubren la mayor parte de especialidades de Medicina humana, dental y veterinaria. Para cada especialidad hay disponibles un amplio rango de accesorios de alta calidad, como el evacuador de humos *VACULAS*. En rango de producto incluye láseres de CO<sub>2</sub>, de diodo y otros láseres de especialidades.

En lugar de centrarnos simplemente en dispositivos por separado, nuestra filosofía es crear estaciones de trabajo multidisciplinarias integradas y de alta funcionalidad. Trabajando con nuestros fieles clientes a nivel mundial, y nuestra estable red de distribuidores, continuaremos proporcionando soluciones innovadoras en la Medicina moderna del futuro.

Tenemos un gran énfasis en investigar y desarrollar, producir, servir y formar. Trabajar en equipo con Hospitales y Médicos es tan importante como la buena comunicación. La calidad del producto es nuestra prioridad principal: nuestra compañía está certificada bajo el riguroso European Quality Standard EN ISO 13485:2003+AC:2009.



**Limmer Laser GmbH**

Schwarzschildstr. 1 • D-12489 Berlin • Germany  
Tel. +49 (0)30 - 6392 5570 • Fax +49 (0)30 - 6392 5580  
info@limmerlaser.de • www.limmerlaser.de

La 4ª Generación Láser  
Precisa, Potente y Multidisciplinar



# UNILAS Touch

## One device for many applications

The smart choice for both hospitals and private clinics: Superior laser technology combined with an easy-to-use interface.

UNILAS Touch One Cost-effective entry-level model	UNILAS Touch Pro High-power advanced model	UNILAS Touch Duo Powerful dual-wavelength model
30 Watt @ 10.600 nm	60 Watt @ 10.600 nm	30 / 60 Watt @ 10.600 nm 20 Watt @ 980 nm

- **High output power in all operating modes** for clearly reduced collateral damage during SuperPulse treatment
- **Innovative UltraSharp Laser Technology** for extremely sharp spot sizes & improved tissue effects
- **Large 10,4" True Color Touch Panel** for easy and intuitive use
- **Multi-user system** for infinite storage of individual user programs
- **Interactive assistant program** for easy selection of treatment parameters
- **Specialized handpieces and scanner system** for more control during laser treatments



## Scanning patterns of new µs Scanner SurgiScan X2



Scanner system SurgiScan X2 is the essential accessory for **superficial, athermic treatment** of tissue. It enables precise cutting, ablation and fractional therapy of tissue and supports the **newly developed Er:YAG ablation mode**.

## Superior handling by design

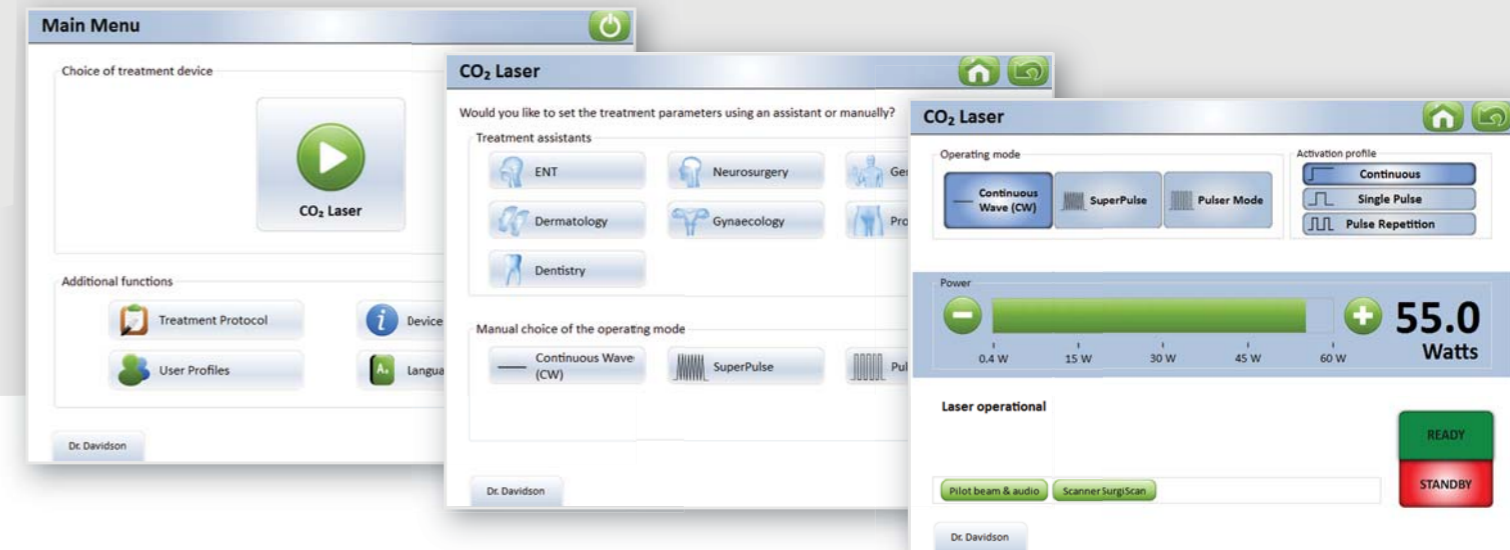
- **As versatile as no other laser**  
Offers a smart design for maximum performance and best patient outcome
- **Two types of beam delivery**  
Prepared for use with both articulated arms and flexible laser fibers
- **Large True Color Touch Panel**  
All functions and accessories are controlled directly by the laser's display
- **Broad variety of accessories and (combined) wavelengths**  
Can be linked to accessories such as the VACULAS smoke evacuator
- **Low total cost of ownership, highest stability**  
No need for frequent recalibration or realignment of optical components
- **Long lifetime by highest product quality**  
Made in Germany according to the highest quality standards (DIN EN 13485:2003+AC:2009) for a long lifetime



Wireless remote control of smoke evacuator VACULAS 3000

## Designed for interdisciplinary use in hospitals and private practices

- **ENT**  
Tonsillectomy & tonsillotomy, tumor surgery, LAUP (laser-assisted uvulopalatoplasty), nasal polyps, stapes surgery, vocal cord carcinoma, rhynophyma, fiber-assisted cutting of tissue, etc.
- **Gynecology**  
Condylomata, dysplasia / neoplasia, carcinoma, papilloma, laparoscopy, cysts, labiectomy, leukoplakia, vaginal atrophy, vaginal rejuvenation, fractional therapy, etc.
- **Neurosurgery**  
Cephalic surgery, tumor removal, tissue ablation
- **Dermatology & Aesthetic - Cosmetic Surgery**  
Fractional therapy (for skin rejuvenation, scars, stretch marks, and more), tissue ablation (e.g. rhynophyma, pigmented lesions), condylomata, etc.
- **General Surgery**  
Coagulation, cutting or ablation of tissue by handpiece, endoscope or microscope
- **Proctology**  
Coagulation of blood vessels, papilloma, etc.
- **Dentistry**  
Implantology, parodontology, etc.



## Technical specifications of CO<sub>2</sub> Laser UNILAS Touch:

Laser type	CO <sub>2</sub> Laser with TEM <sub>00</sub> Mode, λ 10.600 nm (optional: diode laser λ 980 nm)	Pilot beam	Red (635 nm), bright (<10 mW), adjustable, for modern microscopes & colposcopes
Operating modes	Continuous Wave (CW), Enhanced SuperPulse, Ultra-Short Pulser Mode	Assistance program	Integrated assistant with recommended parameter settings for all medical disciplines
Activation profiles	Continuous emission, Single Pulse (1 ms - 5 s), Pulse repetition (1 ms - 5 s)	Cooling system	Modern low noise air cooling, including a purge air system with bacterial filter
Beam delivery	Free-moving articulated arm with 7 joints and a 360° rotation for an extensive treatment range of 150 cm (optional: fiber)	Connectivity	USB port for the export of treatment protocols & import of software updates, scanner system, fiber port (optional) electrical supply 110 - 120 V / 230 - 240 V
Control panel	Large 10,4" True Colour Touch Panel	Size & weight	30 x 125 x 40 cm (W x H x D), 56 kg