

AUTOMATIC GARMENT & CLIPPING SORTING

# ECOCLIP

Precision Categorization for Enhanced Textile  
and Fashion Circularity

PICVISA



We can sort it out.

[www.picvisa.com](http://www.picvisa.com)

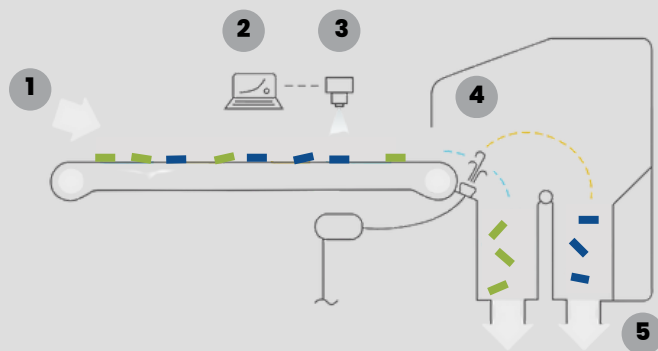
## The real revolution of the textile industry

We make textile and fashion circularity possible granting proper and accurate clippings automatic sorting in textile recycling centers worldwide.

- Sorting of textile based on fiber compositions and colors
- Quality control of pre-sorted fractions
- Hard points detection and automatic sorting
- Metal detection
- 100% surface analysis
- clipping textile size starting from 25mm
- 2.5 tons/hour



### Operation scheme:



The materials are deposited on the feeder conveyor [1], when passing through the lightning area the materials reflect the light [3] and one or more cameras capture the spectra and/or images [3]. Once the software and hardware of the processing phase [2] determine that an object at the precise moment it passes over the ejection nozzles are activated [4]. The target product [5] is separated from the main flow.



#### Fiber sorting

Surface detection of pure fibers and blends of fibers



#### Color sorting

Wide color chart detection including different shades of each color and dark colors (royal navy, black etc)



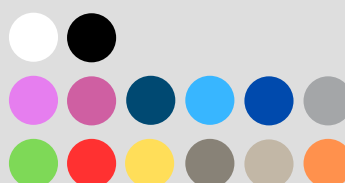
#### Hard points sorting

Detection of clippings with buttons, zippers, seams and metal pieces

### Composition

Cotton	Polyamide
Cotton-Polyester	Acetate
Polyester	Pu
Wool	Silk
Wool - Pa/Po	Others
Acrylic	

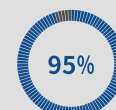
### Colors



and more

### Hard Points

Trims	Metal Pieces
Zippers	Bottoms
Seams	



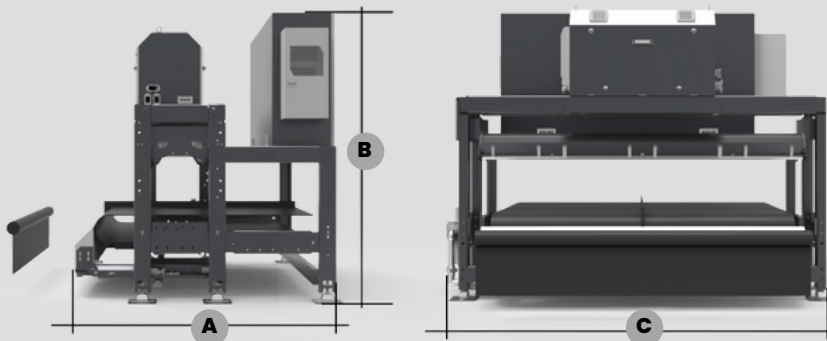
**Accuracy on target recognition material**



## Applications and technologies used:

APPLICATION		TECHNOLOGY			
		NIR	VIS	EM	IA
Color sorting	sorting by color		X		X
Fiber sorting	sorting by fiber (or blend of fibers)	X			X
Color & Fiber sorting	sorting by color and fiber combined	X	X		X
Hard points sorting	trims, buttons, zippers, etc. sorting	X	X	X	X
Textile defect sorting	textile defects detection & sorting	X	X		X
Garment Sorting	whole pieces sorting	X	X		X
Combination of the above application		X	X	X	X

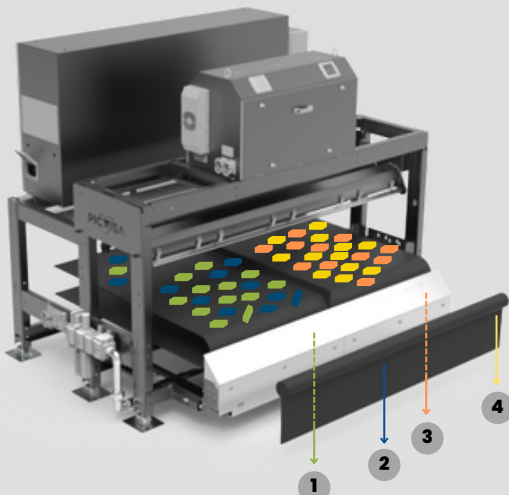
## General figures:



Data Sheet		
EP 2000		
Width	2.000 mm	
A	1.923 mm	
B	2.110 mm	
C	2.660 mm	
Air Consumption	4.000/8.000 lpm	

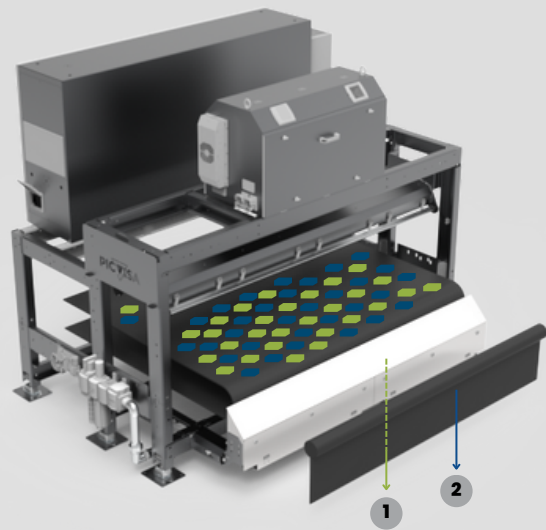
\* Other sizes available

## Available configuration:



### Fiber &/or Color sorting

Color sorting  
Throughput ~2,5 tn/h  
2-5 Outputs  
NIR / VIS



### Hard points sorting

Hard points sorting  
Throughput ~2,5 tn/h  
2 Outputs  
NIR / VIS / AI / EM

Design and manufacture of sensor-based sorting equipment  
incorporating vision and artificial intelligence technologies.



DFactory Barcelona  
Calle 27, 10-16, Sector BZ, 08040 Barcelona

+34 938 268 822  
info@picvisa.com

[www.picvisa.com](http://www.picvisa.com)