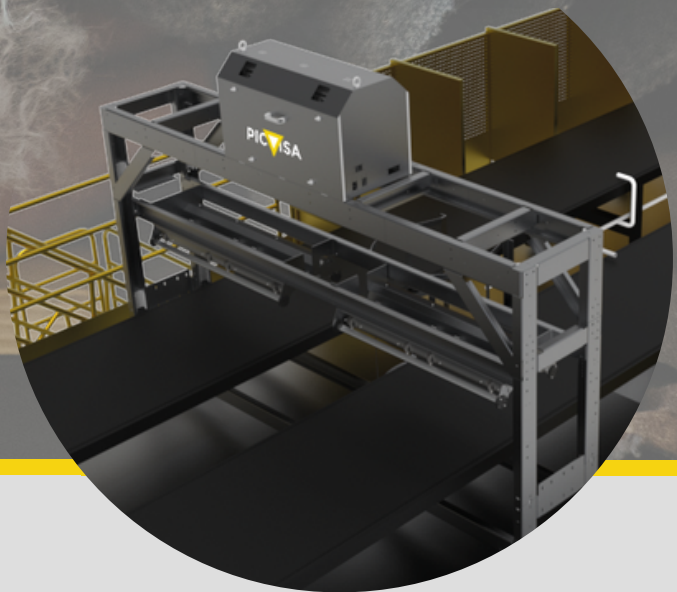


AUTOMATIC TEXTILE CLASSIFICATION

# ECOSORT

Precision Categorization for Enhanced Textile  
and Fashion Circularity



We can sort it out.

[www.picvisa.com](http://www.picvisa.com)

# ECOSORT TEXTILE

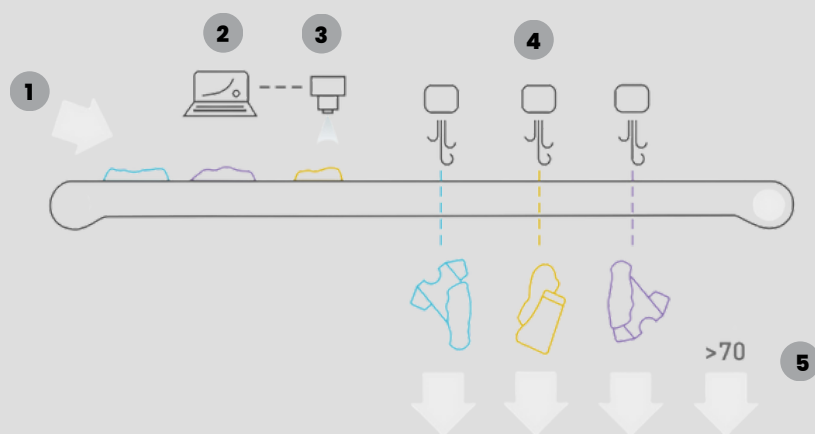
## The real revolution of the textile industry

We make textile and fashion circularity possible granting proper and accurate garment automatic sorting in textile recycling centers worldwide.

- 100% surface garment analysis
- Sorting of textile based on fiber composition s and colors
- Textiles are fed one-by-one and sorted in unlimited categories.



### Operation scheme:



The materials are deposited on the feeder conveyor [1], when passing through the lightning area the materials reflect the light [3] and one or more cameras capture the spectra and/or images [3]. Once the software and hardware of the processing phase [2] determine that an object at the precise moment it passes over the ejection nozzles are activated [4]. The target product [5] is separated from the main flow.

### Sorting of:

#### Compositions

Cotton	Wool
Cotton-Polyester	Polyamide
Polyester	Acetate
Wool	Pu
Wool - Pa/Po	Silk
Acrylic	Others

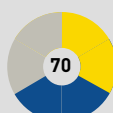
#### colors



and more



**Accuracy on target recognition material**

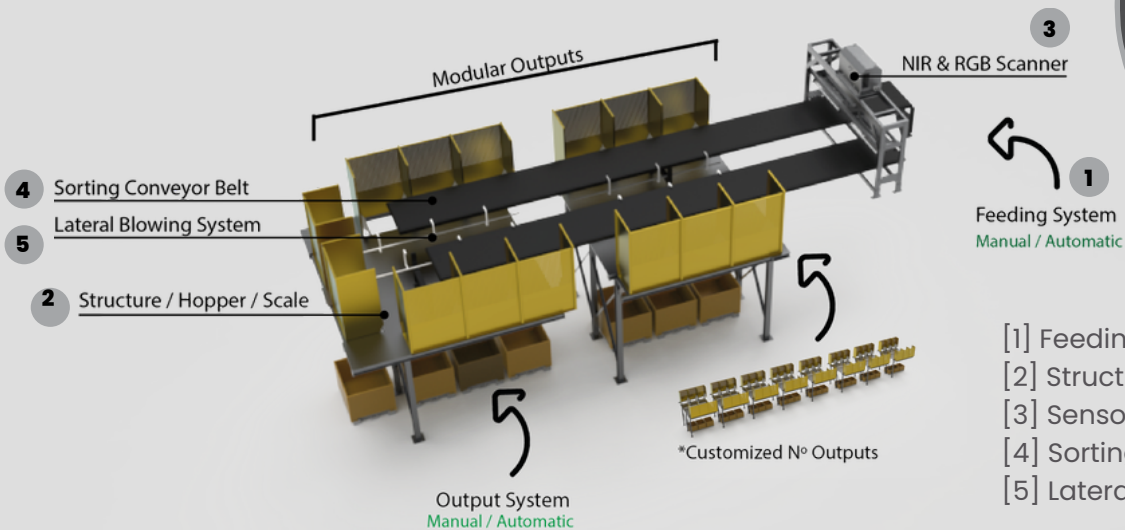


**Fiber sorted outputs**



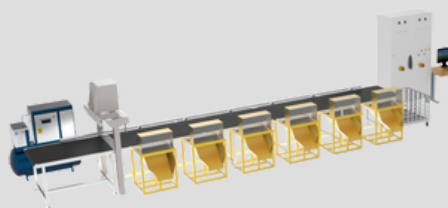
# ECOSORT TEXTILE

The ECOSORT line minimum supply include:

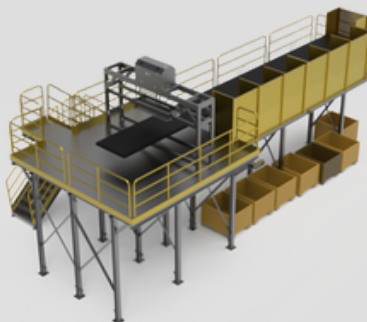


- [1] Feeding system
- [2] Structures, hoppers & scale
- [3] Sensored based scanner
- [4] Sorting Conveyor Belt
- [5] Lateral blowing system

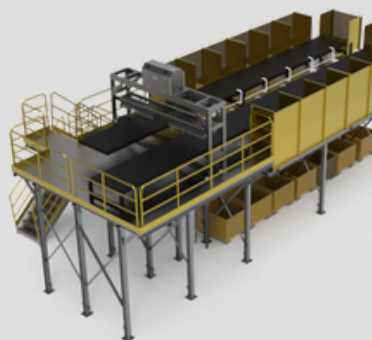
## Available configurations:



Single sensor based scanner  
Throughput 700kg/h  
6 Outputs  
Single Conveyor  
**\*Air consumption: 200 lpm**

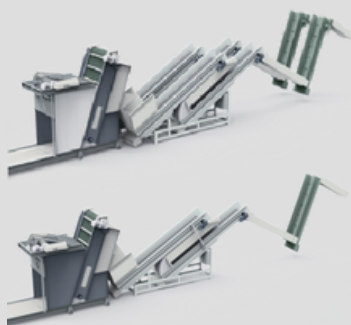


Single sensor based scanner  
Throughput 1000kg/h  
24 Outputs  
Single Conveyor  
**\*Air consumption: 800 lpm**

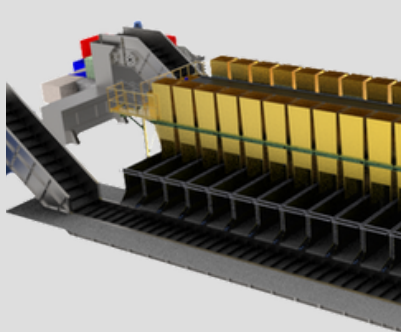


Single sensor based scanner  
Throughput 2000kg/h  
38 Outputs  
Double Conveyor  
**\*Air consumption: 2400 lpm**

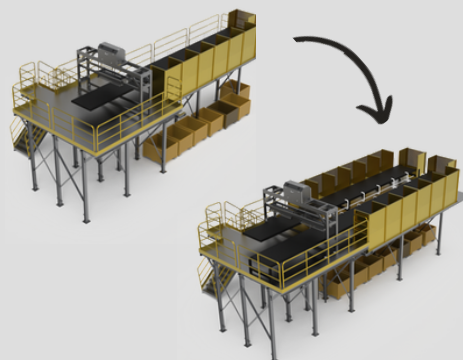
## Optional equipment:



Automatic feeding



Automatic output



Double conveyor

\*Estimated air consumption considering a simultaneity of 30%

Design and manufacture of sensor-based sorting equipment  
incorporating vision and artificial intelligence technologies.

