

SunEwat

Transparent solutions : Vision Square and Vision Stripe



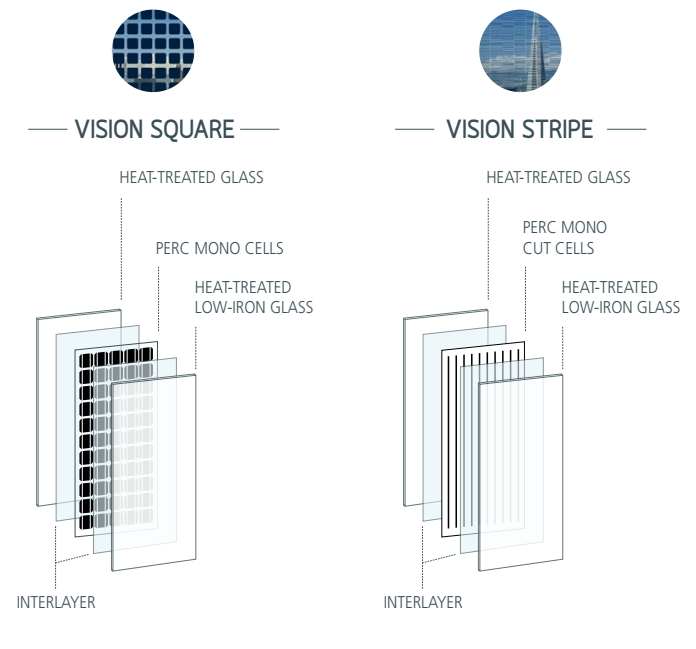
Vision Square and **Vision Stripe** are the transparent photovoltaic-embedded glazings in the SunEwat range. By enabling architects and designers to take an artistic approach to the vision glass elements as well as the spandrels and cladding components, SunEwat Vision delivers elegant solutions that showcase the use of green energy while maintaining the glazing's transparency and functionality.

Technical specifications

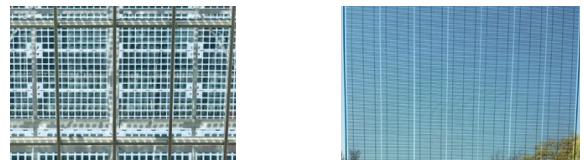
	SunEwat Vision	Vision Square	Vision Stripe
Composition	Exterior glass	Extra clear	
	Interlayer	EVA	
	Interior glass	Clear, extra clear, coloured, silkprinted, other	
	Insulating glass	IGU or TGU	
	Frame	On demand	
Design	Min. size (mm)	400 x 400*	
	Max. size (mm)	4500 x 2000*	
	Standard size availability	Yes	No
	Min. thickness (mm)	2 x 2	
	Max. thickness (mm)	2 x 12	
	Transparency	8 to 90%	40 to 60%
	Shapes	On demand	
Specifications	Type of cell	High-performance PERC mono cells	
	Typical Power (Wp/m ²)	40 to 180	40 to 80
	Junction Box	Edge or back	
	Typical cable length	2 x 1m	
	Cell size (mm)	158.75 x 158.75	Custom
Certification and warranties	IEC certifications	Family certification per IEC 61215 - IEC 61730	
	Safety Glazing	EN 356 - P1A, EN 12600 - 1B1, EN ISO 12543	
	Product warranty	10 years	
	Performance warranty	10 years - 90% nominal power / 20 years - 80% nominal power	

*Size optimisations (mm)
Optimal > 1370 X 673 | < 2000 X 1000
Custom < 3500 X 2200
Oversized < 4500 X 2000

Composition



Cell rendering transparency



Applications

- | | |
|-------------|----------------|
| Facades | Louvers |
| Canopies | Spandrels |
| Sunshades | Carports |
| Roofs | Noise barriers |
| Balustrades | |